

ABB BALDOR RELIANCE III



Customer information packet

IDVSM3774T

10HP, 1760RPM, 3PH, 60HZ, 215TC, 0748M, TEFC, F

Class - None

Division - Not Applicable

Specifications

Enclosure	TEFC
Frame	215TC
Frame Material	Iron
Frequency	60.00 Hz
Haz Area Class and Group	None
Haz Area Division	Not Applicable
Motor Letter Type	Three Phase
Output @ Frequency	10.000 HP @ 60 HZ
Phase	3
Synchronous Speed @ Frequency	1800 RPM @ 60 HZ
Voltage @ Frequency	230.0 V @ 60 HZ 460.0 V @ 60 HZ
Agency Approvals	UR CSA
Ambient Temperature	40 °C
Auxiliary Box	NO AUXILLARY BOX
Auxiliary Box Lead Termination	None
Base Indicator	Rigid
Bearing Grease Type	Polyrex EM (-20F +300F)
Blower	None
Current @ Voltage	12.500 A @ 460.0 V 25.000 A @ 230.0 V
Design Code	A
Drip Cover	No Drip Cover
Duty Rating	CONT
Efficiency @ 100% Load	92.4 %
Electrically Isolated Bearing	Not Electrically Isolated
Feedback Device	NO FEEDBACK
Front Face Code	Encoder/Feedback Device
Front Shaft Indicator	No Key Or Flat
Heater Indicator	No Heater
High Voltage Full Load Amps	12.5 a

Part Detail

Revision	N
Type	AC
Mech. spec.	07M288
Base	
Status	PRD/A
Elec. spec.	07WGX776
Layout	07LYM288
Eff. date	09-30-2025
CD Diagram	CD0005
Poles	04
Leads	9#14
Proprietary	False
Created date	09-05-2012

Insulation Class	F
Inverter Code	Inverter Duty
KVA Code	H
Lifting Lugs	Standard Lifting Lugs
Locked Bearing Indicator	Locked Bearing
Max Speed	4500 rpm
Motor Lead Exit	Ko Box
Motor Lead Quantity/Wire Size	9 @ 14 AWG
Motor Lead Termination	Flying Leads
Motor Standards	NEMA
Motor Type	0748M
Mounting Arrangement	F1
Number of Poles	4
Overall Length	24.59 IN
Power Factor	82
Product Family	General Purpose
Pulley End Bearing Type	Ball
Pulley Face Code	C-Face
Pulley Shaft Indicator	Standard
Rodent Screen	None
Service Factor	1.00
Shaft Diameter	1.375 IN
Shaft Extension Location	Pulley End
Shaft Ground Indicator	No Shaft Grounding
Shaft Rotation	Reversible
Shaft Slinger Indicator	No Slinger
Speed	1760 rpm
Speed Code	Single Speed
Starting Method	Direct on line
Thermal Device - Bearing	None
Thermal Device - Winding	Normally Closed Thermostat
Vibration Sensor Indicator	No Vibration Sensor
Winding Thermal 1	None
Winding Thermal 2	None

Nameplate

NP4615L	
CAT NO	IDVSM3774T
SPEC.	07M288X776G1 ENCL TEFC
FRAME	215TC HP 10
VOLTS	230/460
MAG CUR	10.2/5.1 FLA 25/12.5
RPM	1760 RPM MAX 4500
HZ	60 PH 3 CLASS F
SER.F.	1.00 SL HZ 1.3
NEMA-NOM-EFF	92.4 WK2 1.18
RATING	40C AMB-CONT
DE BRG	6307 ODE BRG 6206
CC	010A SN
	1.5:1 CHP PWM
	1000:1 CT/VT

REL S.O.	ZDVSM3774T	VOLTS	460	ENCLOSURE	TEFC	WYE CONN EQ CKT OHMS PER PHASE			
FRAME	215TC	AMPS	12.5	MAX SAFE RPM	6000	(AT BASE RATING, 25 ⁰ C)			
HP	10	DUTY	CONT	In (AMPS)	5.1	R1	0.5070	X1	1.9720
BASE SPEED	1760	S.F.	1.0	P.F. @NL/FL	4/82	R2	0.3420	X2	1.5800
PHASE/HZ	3/60	AMB ⁰ C/INSUL	40/F	WK ² (lb-ft ²)	1.18			XM	48.3000

Rated Full Load Data

	RPM	HP	Torque	Volts	Freq-Hz	Amps
Base Speed	1762	10.0	29.80	460	60	12.30
Max Speed	2655	10.1	20.05	460	90	11.98
Min Speed	0	0.0	29.00	29.70	1.27	12.30

Load Performance at Base Speed

	RPM	HP	Torque	Volts	Freq-Hz	Amps
No Load	1799	0.0	0.00	460	60	5.10
1/4	1790	2.5	7.29	460	60	5.84
1/2	1781	5.0	14.70	460	60	7.52
3/4	1771	7.5	22.30	460	60	9.75
Full Load	1762	10.0	29.80	460	60	12.30
O/L	1740	17.2	51.80	460	60	20.75

Blower Data

Volts	Ph/Hz	FL Amps	LR Amps	Frame	CFM

Remarks: Calculated Data
Vector PWM Inverter Duty



DR BY Michael Williamson
 CK BY Michael Williamson
 APP BY Michael Williamson
 DATE 2/4/2016

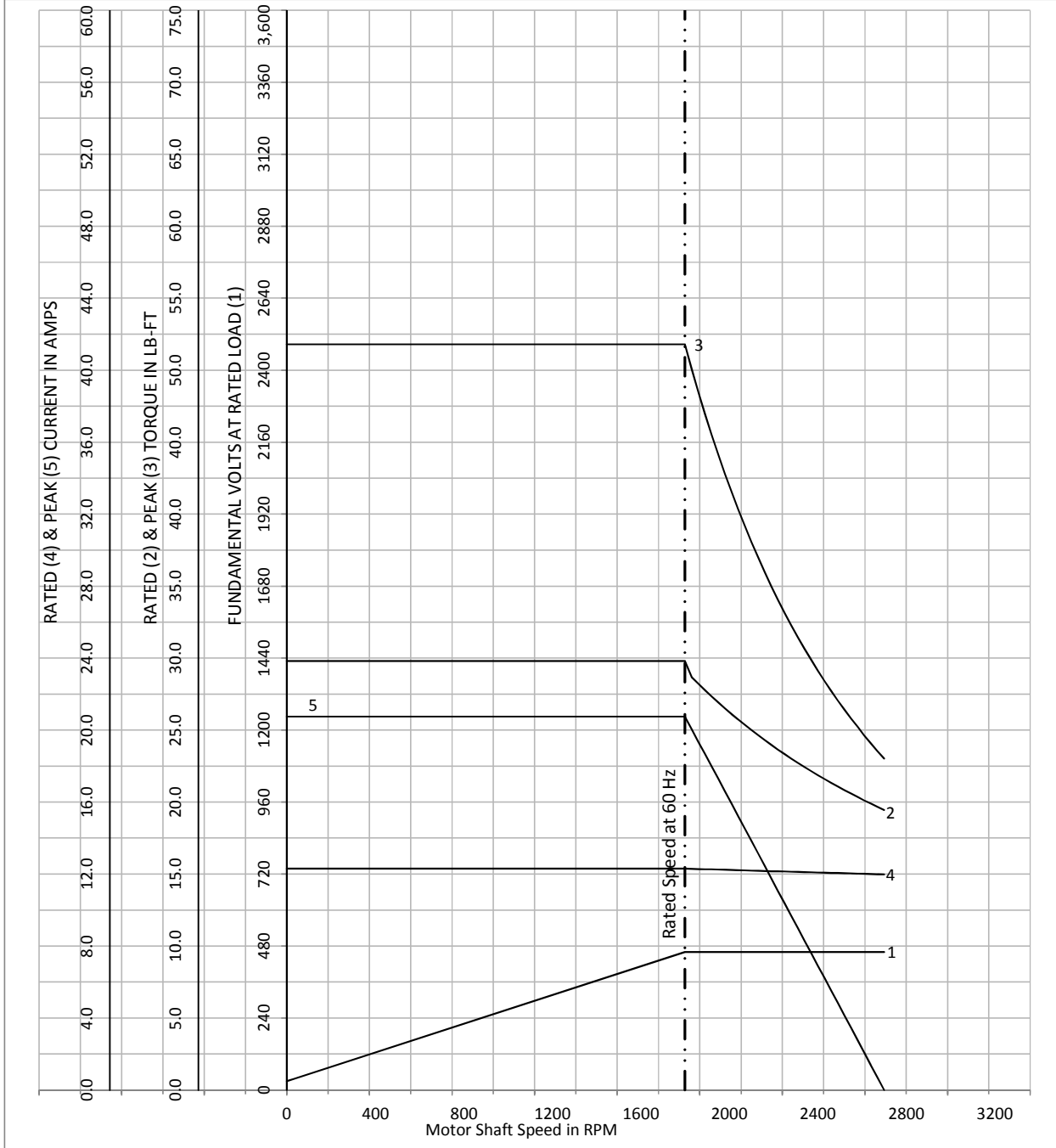
**A-C MOTOR
PERFORMANCE CURVES**

07M292X776Z1

ISSUE DATE 2/4/2016

REL S.O.	ZDVSM3774T	VOLTS	460	ENCLOSURE	TEFC	WYE CONN EQ CKT OHMS PER PHASE			
FRAME	215TC	AMPS	12.5	MAX SAFE RPM	6000	(AT BASE RATING, 25 ⁰ C)			
HP	10	DUTY	CONT	In (AMPS)	5.1	R1	0.5070	X1	1.9720
BASE SPEED	1760	S.F.	1.00	P.F. @NL/FL	4/82	R2	0.3420	X2	1.5800
PHASE/HZ	3/60	AMB ⁰ C/INSUL	40/F	WK ² (lb-ft ²)	1.18			XM	48.3000

Vector PWM Inverter Duty
Variable Speed AC Motor Curves



Calculated Data

Data Valid For Nameplate Speed Range only



DR BY Michael Williamson
 CK BY Michael Williamson
 APP BY Michael Williamson
 DATE 2/4/2016

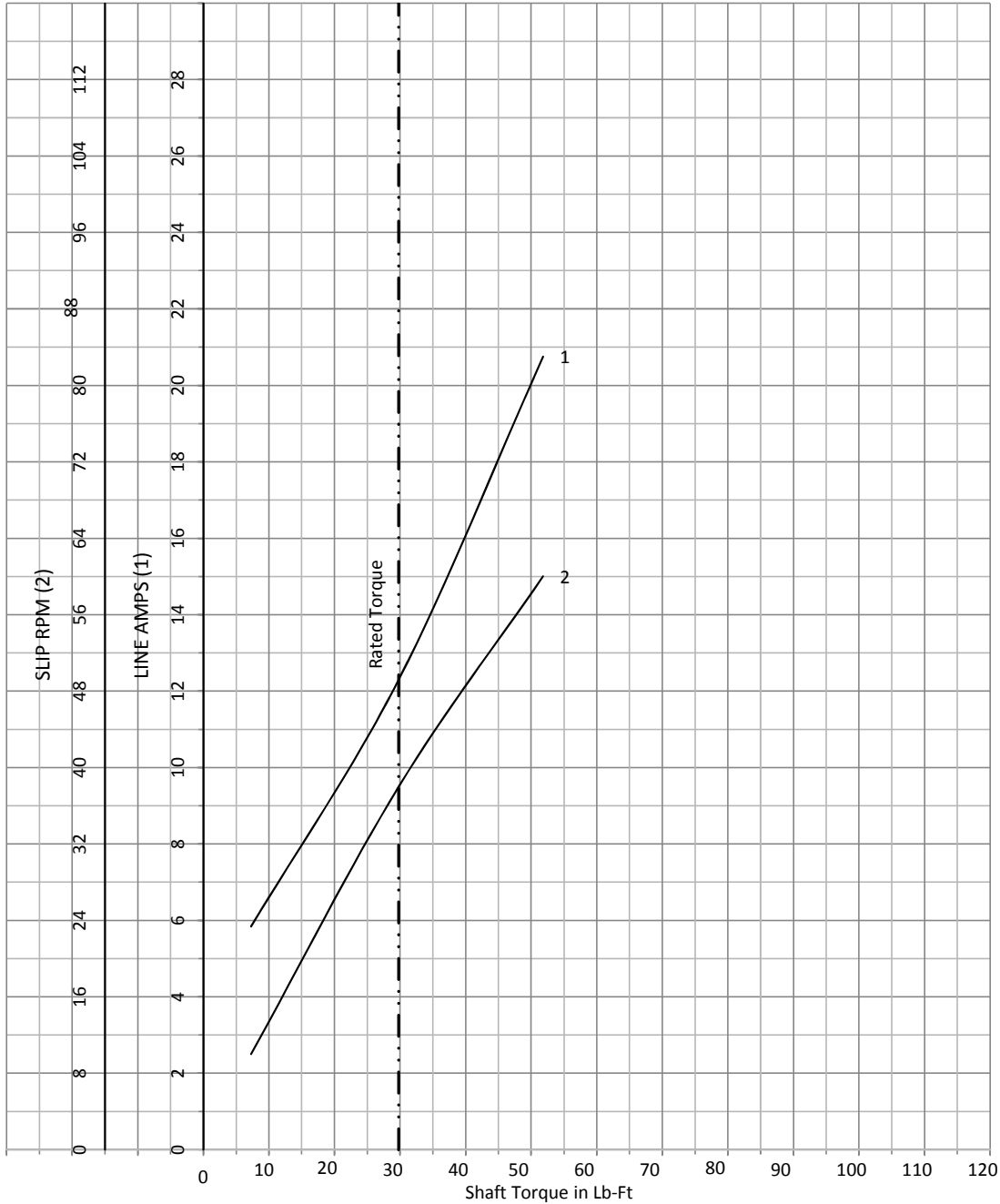
**A-C MOTOR PERFORMANCE
CURVES**

07M292X776Z1

SH 1 of 2
 ISSUE DATE 2/4/2016

REL S.O.	ZDVSM3774T	VOLTS	460	ENCLOSURE	TEFC	WYE CONN EQ CKT OHMS PER PHASE			
FRAME	215TC	AMPS	12.5	MAX SAFE RPM	6000	(AT BASE RATING, 25 ⁰ C)			
HP	10	DUTY	CONT	In (AMPS)	5.1	R1	0.5070	X1	1.9720
BASE SPEED	1760	S.F.	1.00	P.F. @NL/FL	4/82	R2	0.3420	X2	1.5800
PHASE/HZ	3/60	AMB ⁰ C/INSUL	40/F	WK ² (Lb-Ft ²)	1.18			XM	48.3000

Vector PWM Inverer Duty
Variable Speed AC Motor Curves



Calculated Data

Data Valid For Nameplate Speed Range only

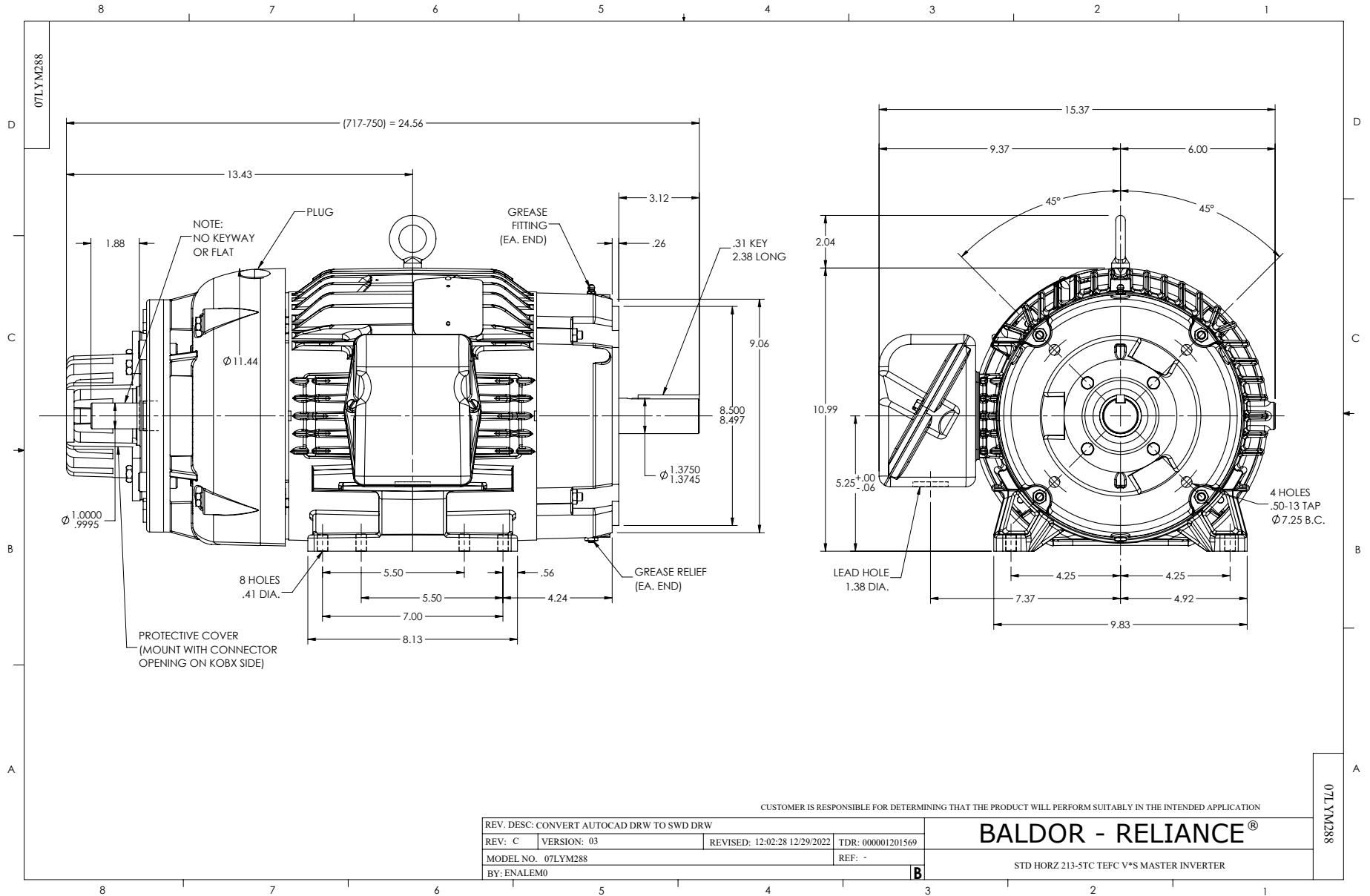


DR BY Michael Williamson
 CK BY Michael Williamson
 APP BY Michael Williamson
 DATE 2/4/2016

**A-C MOTOR PERFORMANCE
CURVES**

07M292X776Z1

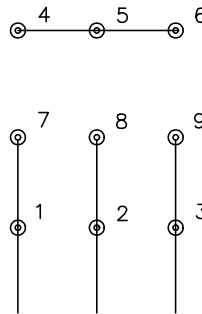
SH 2 of 2
 ISSUE DATE 2/4/2016



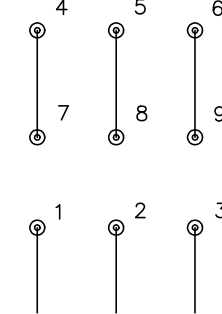
CD0005



LOW VOLTAGE
(2Y)



HIGH VOLTAGE
(1Y)



NOTES:

1. INTERCHANGE ANY TWO LINE LEADS TO REVERSE ROTATION.
2. OPTIONAL THERMOSTATS ARE PROVIDED WHEN SPECIFIED.
3. ACTUAL NUMBER OF INTERNAL PARALLEL CIRCUITS MAY BE A MULTIPLE OF THOSE SHOWN ABOVE.
4. LEAD COLORS ARE OPTIONAL. LEADS MUST ALWAYS BE NUMBERED AS SHOWN.

CD0005

REV. DESC: REVISE TO SHOW OPTIONAL COLORS			
REV. LTR: E	BY: JLP	REVISED: 01/19/99 10:15	TDR: 0171435
S00000		FILE: AAA00005140	MDL: -
		MTL: -	

BALDOR ELECTRIC Co.

3PH, DV, 9 LEADS