

BALDOR • RELIANCE

Customer information packet

IDVSM3770T

7.5HP, 1770RPM, 3PH, 60HZ, 213TC, 0738M, TEFC

Class - None

Division - Not Applicable

Specifications

Enclosure	TEFC
Frame	213TC
Frame Material	Iron
Frequency	60.00 Hz
Motor Letter Type	Three Phase
Output @ Frequency	7.500 HP @ 60 HZ
Phase	3
Synchronous Speed @ Frequency	1800 RPM @ 60 HZ
Voltage @ Frequency	230.0 V @ 60 HZ 460.0 V @ 60 HZ
XP Class and Group	None
XP Division	Not Applicable
Agency Approvals	CSA UR
Ambient Temperature	40 °C
Auxillary Box	No Auxillary Box
Auxillary Box Lead Termination	None
Base Indicator	Rigid
Bearing Grease Type	Polyrex EM (-20F +300F)
Blower	None
Current @ Voltage	19.000 A @ 230.0 V 20.000 A @ 208.0 V 9.500 A @ 460.0 V
Design Code	A
Drip Cover	No Drip Cover
Duty Rating	CONT
Efficiency @ 100% Load	91.7 %
Electrically Isolated Bearing	Not Electrically Isolated
Feedback Device	NO FEEDBACK
Front Shaft Indicator	No Key Or Flat
Heater Indicator	No Heater
High Voltage Full Load Amps	9.5 a

Part detail

Revision	-
Type	AC
Mech. spec.	07M288
Base	
Status	PRD/A
Elec. spec.	07WGT510
Layout	07LYM288
Eff. date	02-18-2021
CD Diagram	CD0005
Poles	04
Leads	9#14
Proprietary	False
Created date	01-28-2021

Insulation Class	F
Inverter Code	Inverter Duty
KVA Code	J
Lifting Lugs	Standard Lifting Lugs
Locked Bearing Indicator	Locked Bearing
Max Speed	4000 rpm
Motor Lead Quantity/Wire Size	9 @ 14 AWG
Motor Lead Termination	Flying Leads
Motor Standards	NEMA
Motor Type	0738M
Mounting Arrangement	F1
Number of Poles	4
Overall Length	24.59 IN
Power Factor	81
Product Family	General Purpose
Pulley End Bearing Type	Ball
Pulley Face Code	C-Face
Pulley Shaft Indicator	Standard
Rodent Screen	None
RoHS Status	ROHS NON-COMPLIANT
Service Factor	1.00
Shaft Diameter	1.375 IN
Shaft Ground Indicator	No Shaft Grounding
Shaft Rotation	Reversible
Shaft Slinger Indicator	No Slinger
Speed	1770 rpm
Speed Code	Single Speed
Starting Method	Direct on line
Thermal Device - Bearing	None
Thermal Device - Winding	Normally Closed Thermostat
Vibration Sensor Indicator	No Vibration Sensor
Winding Thermal 1	None
Winding Thermal 2	None

Nameplate

NP3301L			
CAT NO	IDVSM3770T		
SPEC.	07M288T510G1		
FRAME	213TC	HP	7.5 TE
VOLTS	230/460		
MAG CUR	8.6/4.3	FLA	19/9.5
RPM	1770	RPM MAX	4000
HZ	60	PH	3 CLASS F
SER.F.	1.00	SL HZ	1
NEMA-NOM-EFF	91.7	WK2	0.934
RATING	40C AMB-CONT		
DE BRG	6307	ODE BRG	6206
CC	010A SN		
	1.5:1 CHP PWM		

AC Induction Motor Performance Data

Record # 86626

Preliminary Data Sheet

Winding: 07WGT510-R003		Type: 0738M	Enclosure: TEFC		
Nameplate Data			460 V, 60 Hz: High Voltage Connection		
Rated Output (HP)	7.5	Full Load Torque	22.3 LB-FT		
Volts	230/460	Start Configuration	direct on line		
Full Load Amps	19/9.5	Breakdown Torque	69.1 LB-FT		
R.P.M.	1770	Pull-up Torque	28.7 LB-FT		
Hz	60 Phase	3	Locked-rotor Torque	39.1 LB-FT	
NEMA Design Code	A	KVA Code	J	Starting Current	67.4 A
Service Factor (S.F.)	1	No-load Current	4.07 A		
NEMA Nom. Eff.	91.7	Power Factor	81	Line-line Res. @ 25°C	1.48 Ω
Rating - Duty	40C AMB-CONT		Temp. Rise @ Rated Load	48°C	
			Locked-rotor Power Factor	37.0974	
			Rotor inertia	0.934 lb-ft ²	

Load Characteristics 460 V, 60 Hz, 7.5 HP

% of Rated Load	25	50	75	100	125	150
Power Factor	44	66	76	81	84	85
Efficiency	86.7	91	92.2	91.8	90.3	89.4
Speed	1792	1785	1777	1769	1759	1749
Line amperes	4.61	5.85	7.48	9.43	11.6	13.9

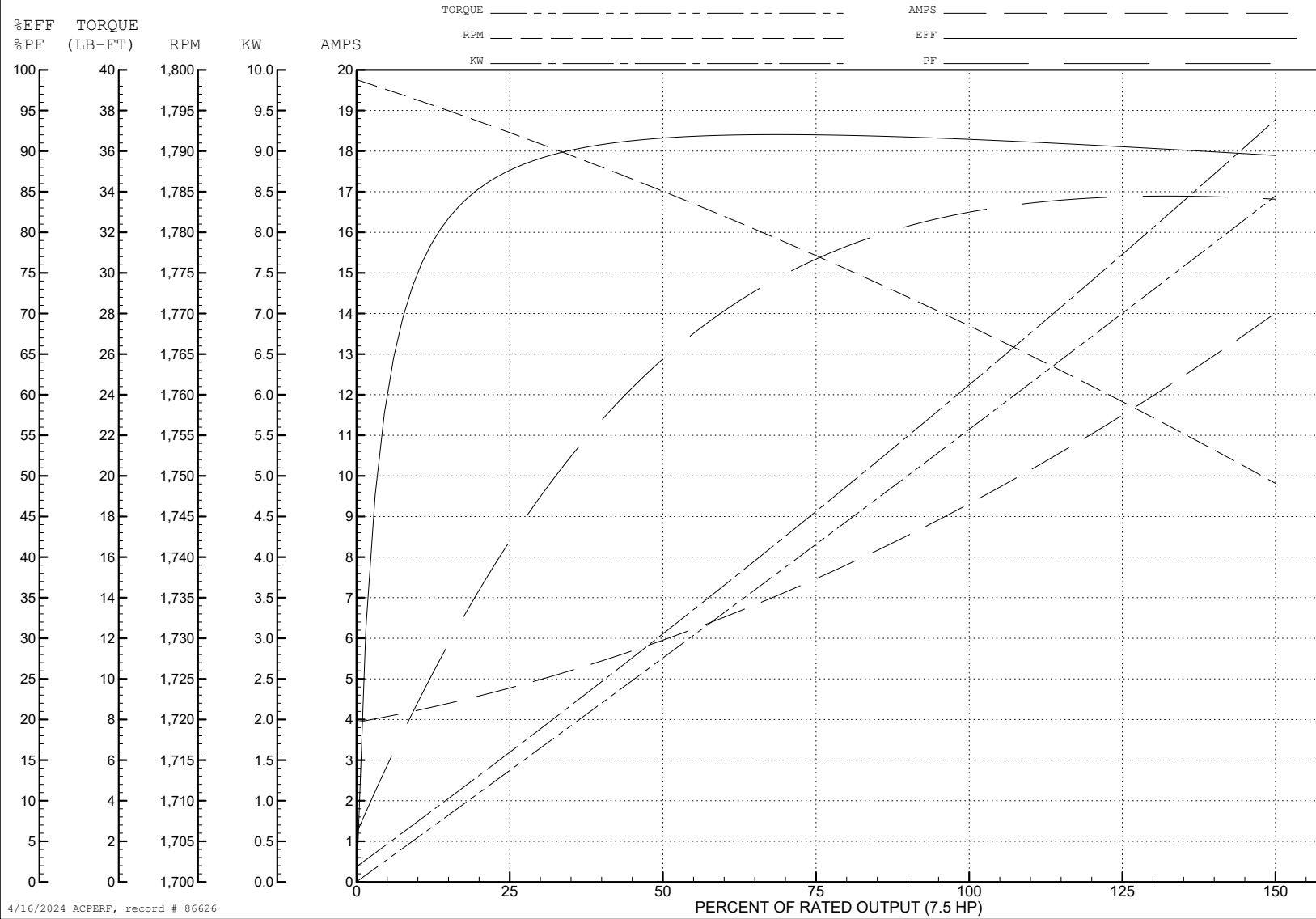
ABB Motors and Mechanical Inc.

WINDING # 07WGT510

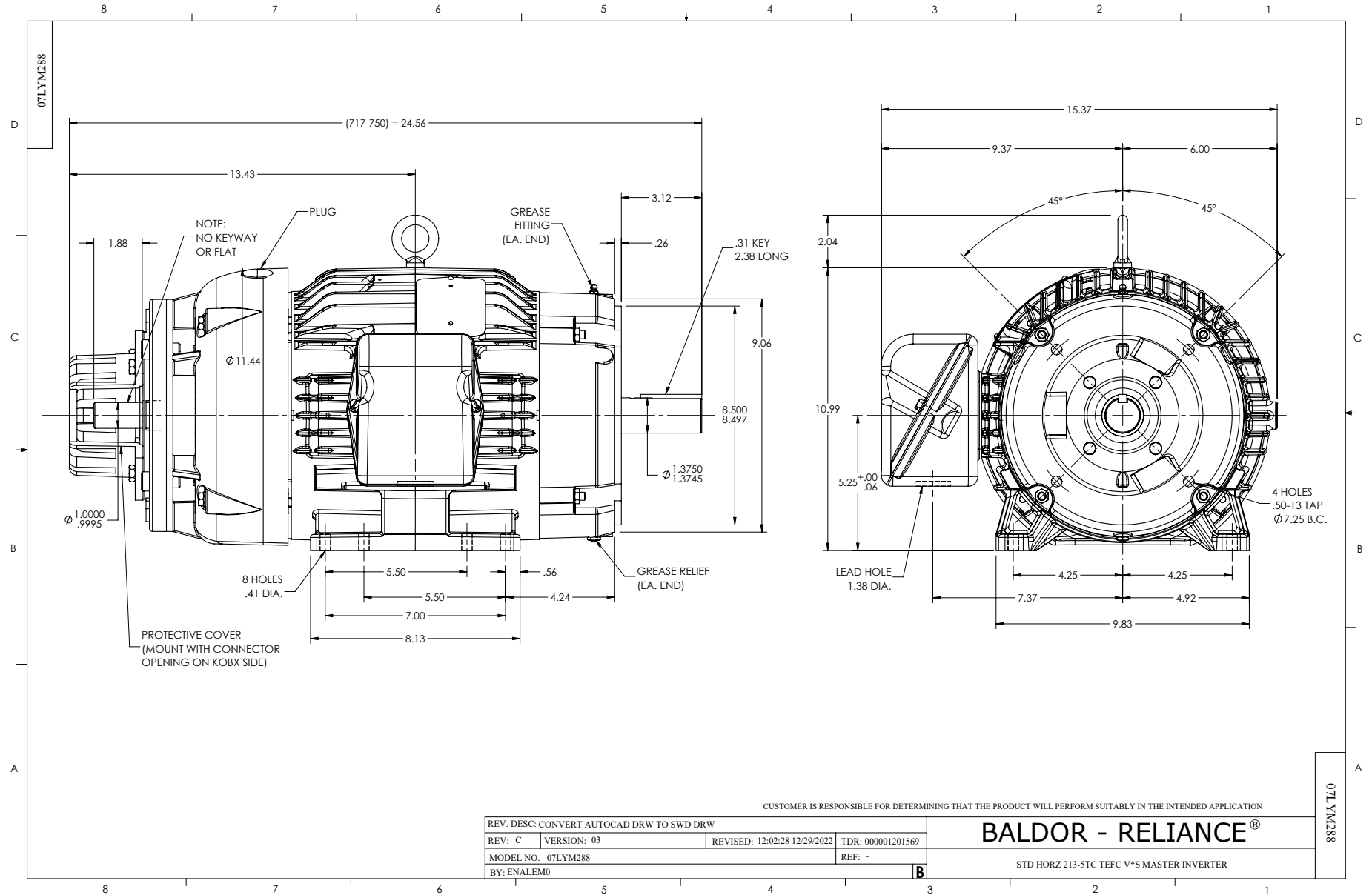
7.5 HP 3 PH 60 HZ 1770 RPM 460 V 0738M

Typical performance - not guaranteed values.

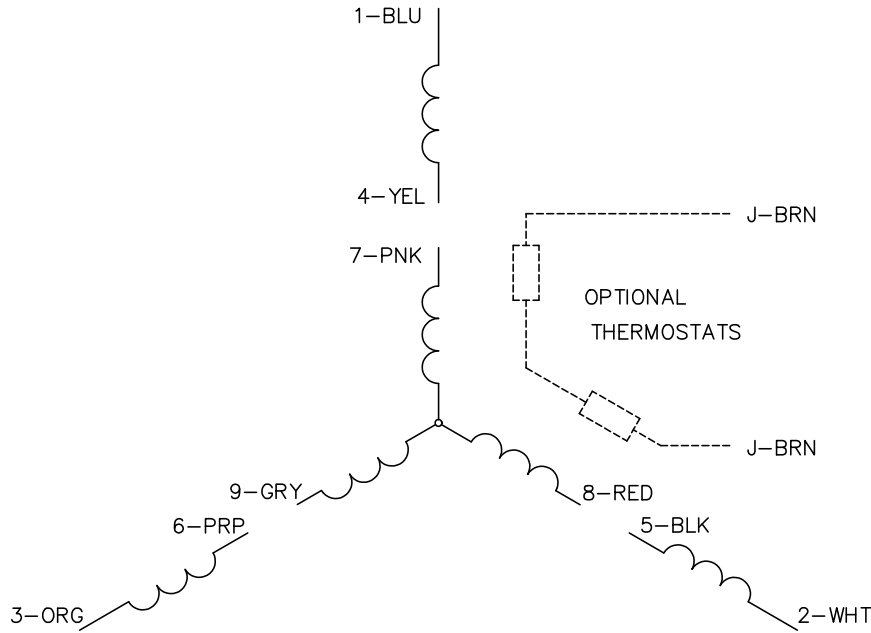
TORQUES (LB-FT): PO=69.1 PU=28.7 LR=39.1 LRA=67.4



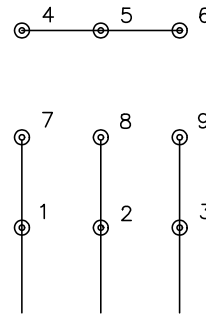
4/16/2024 ACPERF, record # 86626



CD0005

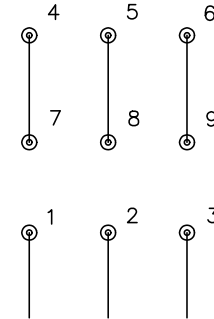


LOW VOLTAGE
(2Y)



LINE

HIGH VOLTAGE
(1Y)



LINE

NOTES:

1. INTERCHANGE ANY TWO LINE LEADS TO REVERSE ROTATION.
2. OPTIONAL THERMOSTATS ARE PROVIDED WHEN SPECIFIED.
3. ACTUAL NUMBER OF INTERNAL PARALLEL CIRCUITS MAY BE A MULTIPLE OF THOSE SHOWN ABOVE.
4. LEAD COLORS ARE OPTIONAL. LEADS MUST ALWAYS BE NUMBERED AS SHOWN.

CD0005

REV. DESC: REVISE TO SHOW OPTIONAL COLORS			
REV. LTR: E	BY: JLP	REVISED: 01/19/99 10:15	TDR: 0171435
S00000		FILE: AAA00005140	MDL: -
		MTL: -	

BALDOR ELECTRIC Co.

3PH, DV, 9 LEADS