

**BALDOR • RELIANCE**

---

# Customer information packet

## IDNM3770T

7.5HP, 1760RPM, 3PH, 60HZ, 213TC, 0748M, TENV

Class - None

Division - Not Applicable

## Specifications

Enclosure	TENV
Frame	213TC
Frame Material	Iron
Frequency	60.00 Hz
Haz Area Class and Group	None
Haz Area Division	Not Applicable
Motor Letter Type	Three Phase
Output @ Frequency	7.500 HP @ 60 HZ
Phase	3
Synchronous Speed @ Frequency	1800 RPM @ 60 HZ
Voltage @ Frequency	230.0 V @ 60 HZ 460.0 V @ 60 HZ
Agency Approvals	UR CSA
Ambient Temperature	40 °C
Auxillary Box	No Auxillary Box
Auxillary Box Lead Termination	None
Base Indicator	Rigid
Bearing Grease Type	Polyrex EM (-20F +300F)
Blower	None
Current @ Voltage	17.800 A @ 230.0 V 8.900 A @ 460.0 V
Design Code	B
Drip Cover	No Drip Cover
Duty Rating	CONT
Efficiency @ 100% Load	92.4 %
Electrically Isolated Bearing	Not Electrically Isolated
Feedback Device	NO FEEDBACK
Front Face Code	Encoder/Feedback Device
Front Shaft Indicator	None
Heater Indicator	No Heater
High Voltage Full Load Amps	8.9 a

## Part detail

Revision	H
Type	AC
Mech. spec.	07J135
Base	
Status	PRD/A
Elec. spec.	07WGX647
Layout	07LYJ135
Eff. date	05-06-2024
CD Diagram	CD0005
Poles	04
Leads	9#14
Proprietary	False
Created date	11-14-2014

Insulation Class	F
Inverter Code	Inverter Duty
KVA Code	H
Lifting Lugs	Standard Lifting Lugs
Locked Bearing Indicator	Locked Bearing
Max Speed	6000 rpm
Motor Lead Exit	Ko Box
Motor Lead Quantity/Wire Size	9 @ 14 AWG
Motor Lead Termination	Flying Leads
Motor Standards	NEMA
Motor Type	0748M
Mounting Arrangement	F1
Number of Poles	4
Overall Length	20.40 IN
Power Factor	82
Product Family	General Purpose
Pulley End Bearing Type	Ball
Pulley Face Code	C-Face
Pulley Shaft Indicator	Standard
Rodent Screen	None
Service Factor	1.00
Shaft Diameter	1.375 IN
Shaft Extension Location	Pulley End
Shaft Ground Indicator	No Shaft Grounding
Shaft Rotation	Reversible
Shaft Slinger Indicator	No Slinger
Speed	1760 rpm
Speed Code	Single Speed
Starting Method	Direct on line
Thermal Device - Bearing	None
Thermal Device - Winding	Normally Closed Thermostat
Vibration Sensor Indicator	No Vibration Sensor
Winding Thermal 1	None
Winding Thermal 2	None

**Nameplate**

<b>NP1162L</b>					
<b>CAT NO</b>	IDNM3770T				
<b>SPEC.</b>	07J135X647G1				
<b>FRAME</b>	213TC	<b>HP</b>	7.5 TE		
<b>VOLTS</b>	230/460				
<b>MAG CUR</b>	7.2/3.6	<b>FLA</b>	17.8/8.9		
<b>RPM</b>	1760	<b>RPM MAX</b>	6000		
<b>HZ</b>	60	<b>PH</b>	3	<b>CLASS</b>	F
<b>SER.F.</b>	1.00	<b>DES</b>	B	<b>SL HZ</b>	1.33
<b>NEMA-NOM-EFF</b>	92.4	<b>WK2</b>	1.18		
<b>BLWR V</b>	<b>PH</b>	<b>HZ</b>	<b>A</b>		
<b>RATING</b>	40C AMB-CONT				
<b>DE BRG</b>	6307	<b>ODE BRG</b>	6206		
<b>CC</b>	010A	<b>SN</b>			
	1.5:1 CHP PWM				

**AC Induction Motor Performance Data**

Record # 48694

Typical performance - not guaranteed values

Winding: 07WGX647-R010		Type: 0748M	Enclosure: TENV	
<b>Nameplate Data</b>			<b>460 V, 60 Hz: High Voltage Connection</b>	
Rated Output (HP)	7.5	Full Load Torque	22.4 LB-FT	
Volts	230/460	Start Configuration	direct on line	
Full Load Amps	17.8/8.9	Breakdown Torque	63.6 LB-FT	
R.P.M.	1760	Pull-up Torque	37.7 LB-FT	
Hz	60 Phase	Locked-rotor Torque	41.7 LB-FT	
NEMA Design Code	B KVA Code	Starting Current	64.7 A	
Service Factor (S.F.)	1	No-load Current	3.53 A	
NEMA Nom. Eff.	92.4 Power Factor	Line-line Res. @ 25°C	1.35 Ω	
Rating - Duty	40C AMB-CONT	Temp. Rise @ Rated Load	61°C	
		Locked-rotor Power Factor	35.4	
		Rotor inertia	1.18 LB-FT <sup>2</sup>	

**Load Characteristics 460 V, 60 Hz, 7.5 HP**

% of Rated Load	25	50	75	100	125	150
Power Factor	47	70	80	84	85	86
Efficiency	89.2	92.8	92.7	92.2	90.8	89.9
Speed	1790	1781	1771	1762	1750	1738
Line amperes	4.1	5.44	7.14	9.1	11.3	13.6

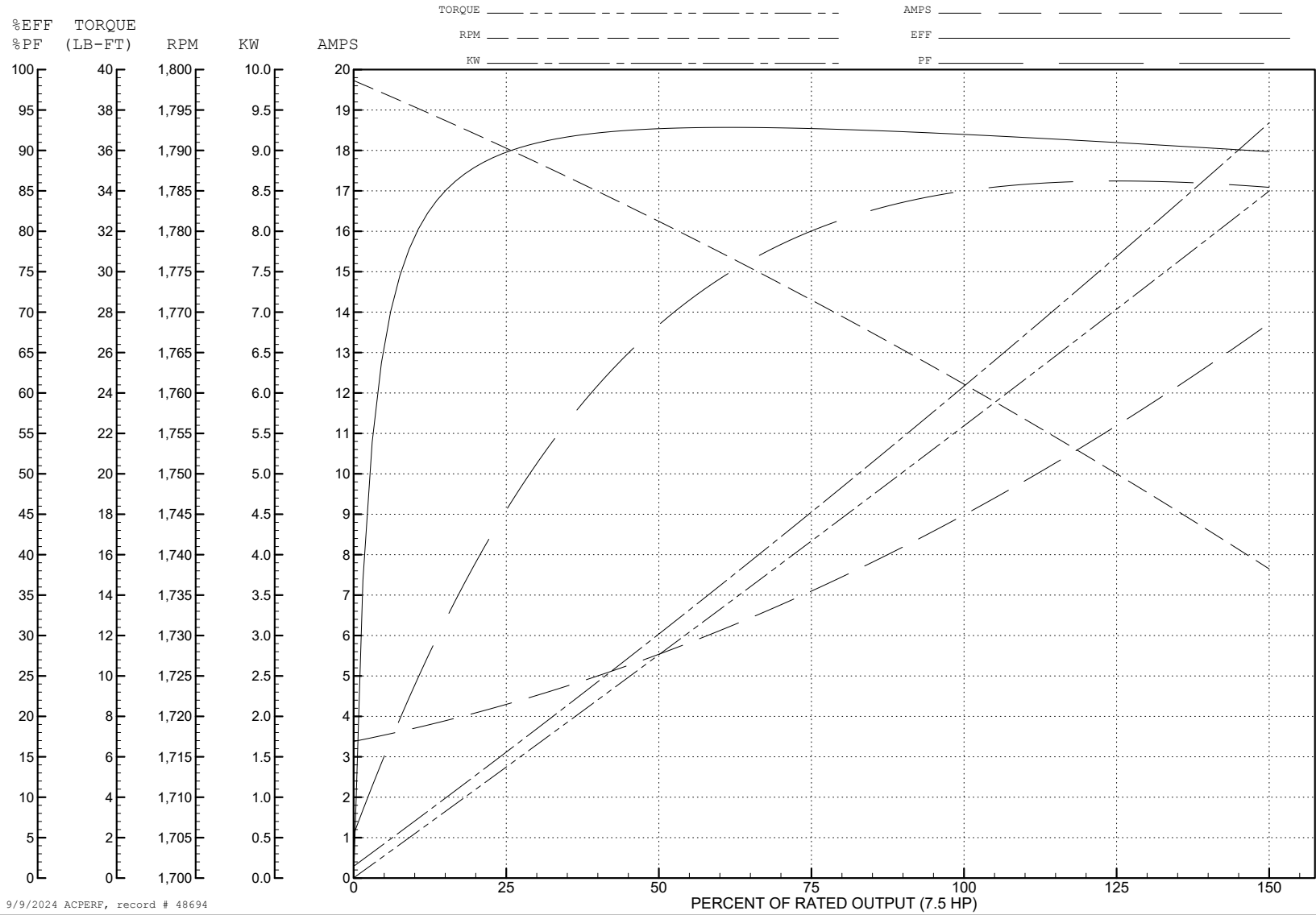
ABB Motors and Mechanical Inc.

WINDING # 07WGX647

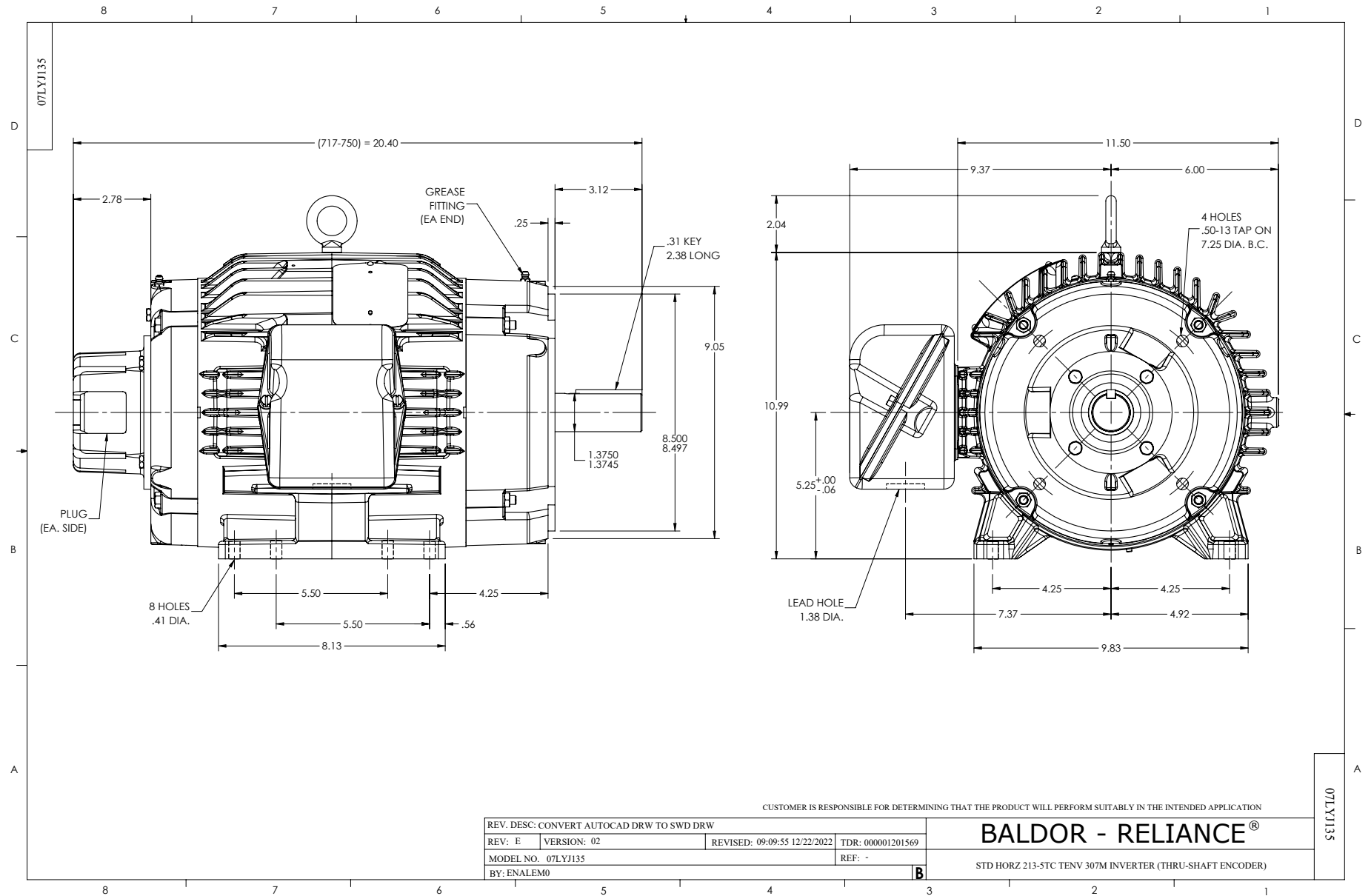
Typical performance - not guaranteed values.

7.5 HP 3 PH 60 HZ 1760 RPM 460 V 0748M

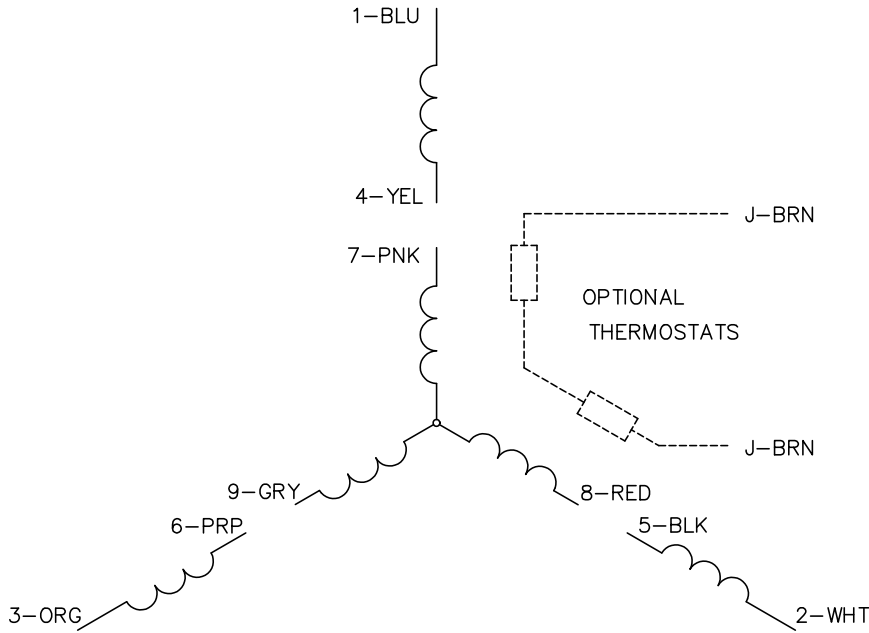
TORQUES (LB-FT): PO=63.6 PU=37.7 LR=41.7 LRA=64.7



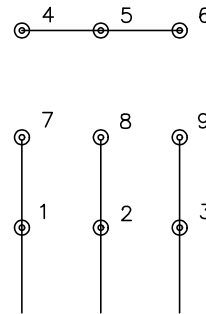
9/9/2024 ACPERF, record # 48694



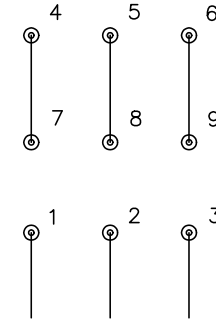
CD0005



LOW VOLTAGE  
(2Y)



HIGH VOLTAGE  
(1Y)



NOTES:

1. INTERCHANGE ANY TWO LINE LEADS TO REVERSE ROTATION.
2. OPTIONAL THERMOSTATS ARE PROVIDED WHEN SPECIFIED.
3. ACTUAL NUMBER OF INTERNAL PARALLEL CIRCUITS MAY BE A MULTIPLE OF THOSE SHOWN ABOVE.
4. LEAD COLORS ARE OPTIONAL. LEADS MUST ALWAYS BE NUMBERED AS SHOWN.

CD0005

REV. DESC: REVISE TO SHOW OPTIONAL COLORS			
REV. LTR: E	BY: JLP	REVISED: 01/19/99 10:15	TDR: 0171435
S00000		FILE: AAA00005140	MDL: -
		MTL: -	

BALDOR ELECTRIC Co.

3PH, DV, 9 LEADS