

ABB BALDOR RELIANCE III

Customer information packet

IDNM3661T

3HP, 1760RPM, 3PH, 60HZ, 184TC, 0636M, TENV, F1

Class - None

Division - Not Applicable

Specifications

Enclosure	TENV
Frame	184TC
Frame Material	Iron
Frequency	60.00 Hz
Haz Area Class and Group	None
Haz Area Division	Not Applicable
Motor Letter Type	Three Phase
Output @ Frequency	3.000 HP @ 60 HZ
Phase	3
Synchronous Speed @ Frequency	1800 RPM @ 60 HZ
Voltage @ Frequency	230.0 V @ 60 HZ 460.0 V @ 60 HZ
Agency Approvals	UR CSA
Ambient Temperature	40 °C
Auxiliary Box	NO AUXILLARY BOX
Auxiliary Box Lead Termination	None
Base Indicator	Rigid
Bearing Grease Type	Polyrex EM (-20F +300F)
Blower	None
Current @ Voltage	4.300 A @ 460.0 V 8.600 A @ 230.0 V
Design Code	A
Drip Cover	No Drip Cover
Duty Rating	CONT
Efficiency @ 100% Load	89.5 %
Electrically Isolated Bearing	Not Electrically Isolated
Feedback Device	NO FEEDBACK
Front Face Code	Encoder/Feedback Device
Front Shaft Indicator	None
Heater Indicator	No Heater
High Voltage Full Load Amps	4.3 a

Part Detail

Revision	G
Type	AC
Mech. spec.	06F551
Base	
Status	PRD/A
Elec. spec.	06WGX370
Layout	06LYF551
Eff. date	06-05-2026
CD Diagram	CD0005
Poles	04
Leads	9#16
Proprietary	False
Created date	04-03-2017

Insulation Class	H
Inverter Code	Inverter Duty
KVA Code	L
Lifting Lugs	Standard Lifting Lugs
Locked Bearing Indicator	Locked Bearing
Max Speed	6000 rpm
Motor Lead Exit	Ko Box
Motor Lead Quantity/Wire Size	9 @ 16 AWG
Motor Lead Termination	Flying Leads
Motor Standards	NEMA
Motor Type	0636M
Mounting Arrangement	F1
Number of Poles	4
Overall Length	17.21 IN
Power Factor	73
Product Family	General Purpose
Pulley End Bearing Type	Ball
Pulley Face Code	C-Face
Pulley Shaft Indicator	Standard
Rodent Screen	None
RoHS Status	ROHS COMPLIANT
Service Factor	1.00
Shaft Diameter	1.125 IN
Shaft Extension Location	Pulley End
Shaft Ground Indicator	No Shaft Grounding
Shaft Rotation	Reversible
Shaft Slinger Indicator	No Slinger
Speed	1760 rpm
Speed Code	Single Speed
Starting Method	Direct on line
Thermal Device - Bearing	None
Thermal Device - Winding	Normally Closed Thermostat
Vibration Sensor Indicator	No Vibration Sensor
Winding Thermal 1	None

Winding Thermal 2

None

Nameplate

NP4009L					
CAT.NO.	IDNM3661T				
SPEC.	06F551X370G2				
FRAME	184TC	H.P.	3 TE		
VOLTS	230/460				
MAG. CUR.	4.8/2.4	F.L. AMPS	8.6/4.3		
R.P.M.	1760	R.P.M. MAX	6000		
HZ.	60	PH.	3	CLASS	H
SER.F.	1.00	DES.	A	SL HZ	1.2
NEMA NOM. EFF.	89.5	WK2	0.372		
BLOWER	V	PH	HZ	AMPS	
RATING	40C AMB-CONT				
DE	6206	ODE	6205		
CC	010A	SN			
	1000:1 CT/VT				

NP VOLTS	230/460	Base Volt 460 NL AMPS 2.45 Slip (HZ) 1.17 WK ² (lb-ft ²) 0.335	WYE CONN EQ CKT OHMS PER PHASE (BASE RATING, 20C)			
NP AMPS	8.6/4.3		R1	1.890	X1	5.040
HP	3		R2	1.340	X2	4.290
BASE SPEED	1765				XM	113.000
PHASE/HZ	3/60					

Rated Full Load Data

	RPM	HP	Torque	Volts	Freq-Hz	Amps
Base Speed	1765	3.0	9.0	460	60	4.3
Max Speed	3528	3.0	4.5	460	120	3.8
CT Min Speed	1.765	0.003	9.0	0.46	0.06	4.3

Load Performance at Base Speed

	RPM	HP	Torque	Volts	Freq-Hz	Amps
No Load	1799	0.0	0.0	460	60	2.5
1/4	1791	0.8	2.3	460	60	2.7
1/2	1783	1.5	4.5	460	60	3.0
3/4	1774	2.3	6.7	460	60	3.6
Full Load	1765	3.0	9.0	460	60	4.3
O/L	1765	3.0	9.0	460	60	4.3

Blower Data

Volts	Ph/Hz	FL Amps	LR Amps	Frame	CFM

Remarks: Calculated Data



DR BY USJIJON
 CK BY CD
 APP BY USJIJON
 DATE 11/1/2024

**A-C MOTOR
PERFORMANCE
CURVES**

06WGX370

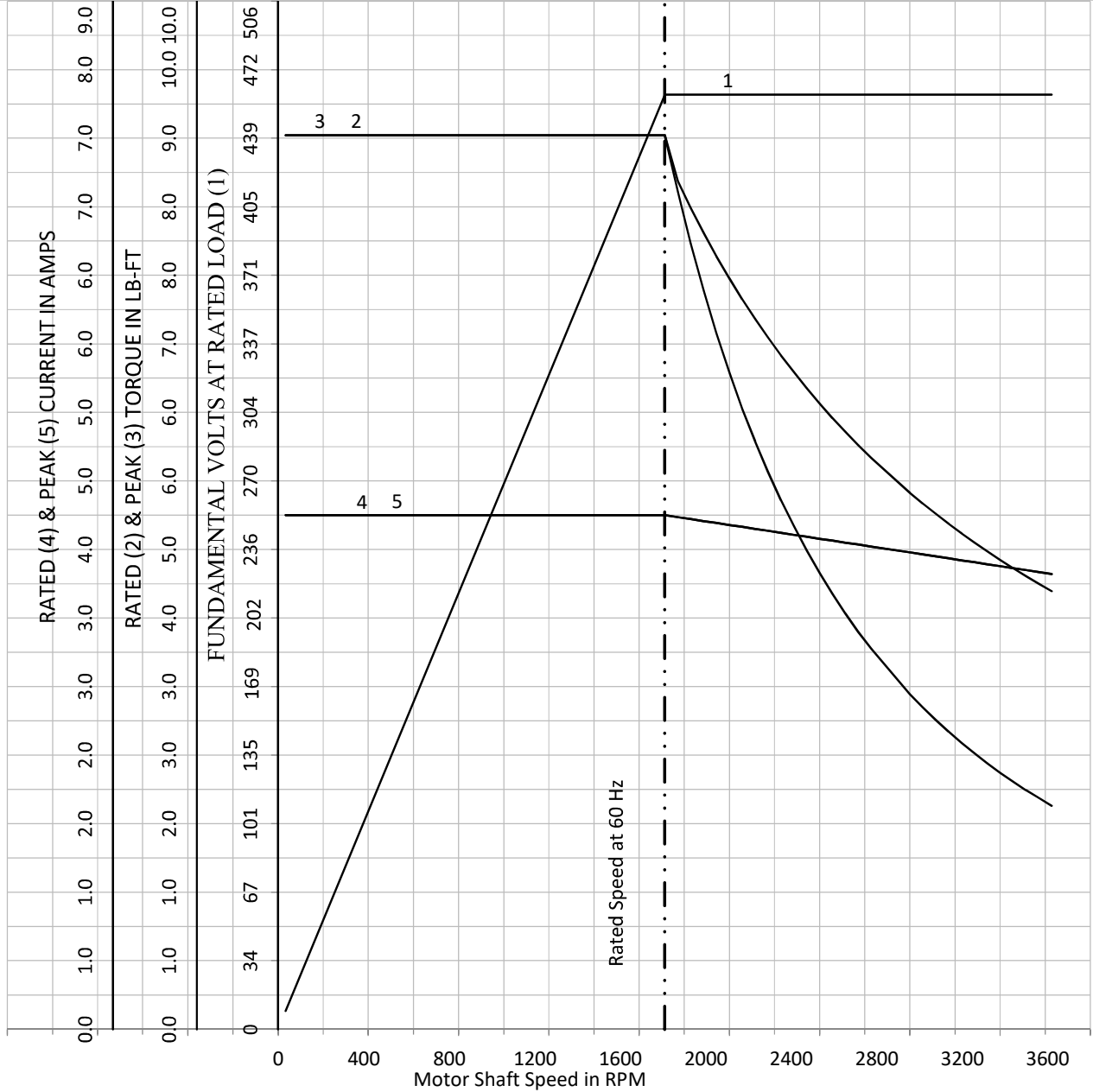
Record: 66036

NP VOLTS 230/460
 NP AMPS 8.6/4.3
 HP 3
 BASE SPEED 1765
 PHASE/HZ 3/60

Base Volt 460
 NL AMPS 2.45
 Slip (HZ) 1.17
 WK² (lb-ft²) 0.335

WYE CONN EQ CKT OHMS PER PHASE (BASE RATING, 20C)
 R1 1.890 X1 5.040
 R2 1.340 X2 4.290
 XM 113.000

Variable Speed AC Motor Curves



Calculated Data

Data Valid For Nameplate Speed Range only



DR BY USJIJON
 CK BY CD
 APP BY USJIJON
 DATE 11/1/2024

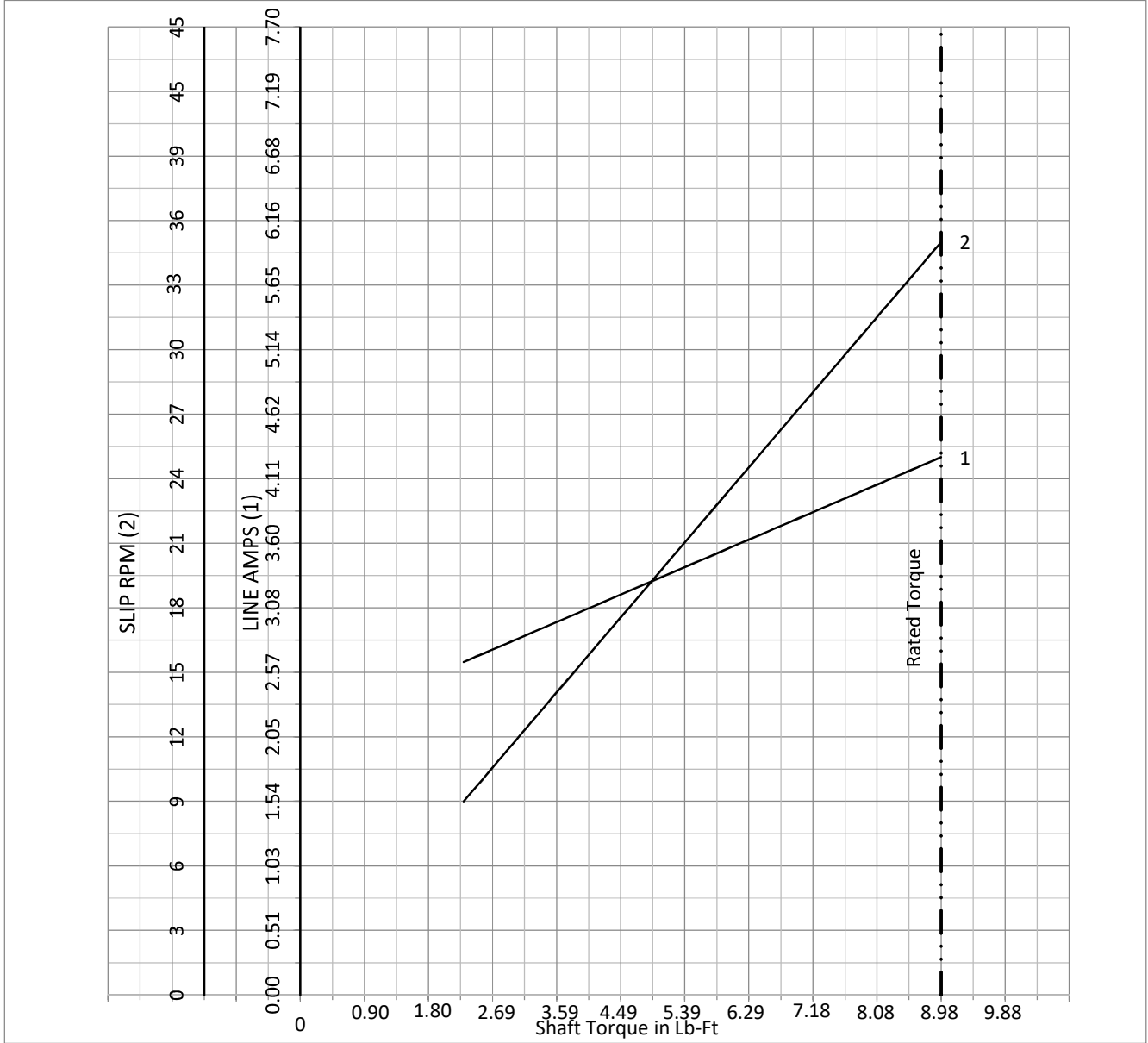
**A-C MOTOR
 PERFORMANCE
 CURVES**

06WGX370

Record: 66036

NP VOLTS	230/460	0	0	WYE CONN EQ CKT OHMS PER PHASE (BASE RATING, 20C)		
NP AMPS	8.6/4.3	Base Volt	460	R1	1.890	X1 5.040
HP	3	NL AMPS	2.45	R2	1.340	X2 4.290
BASE SPEED	1765	Slip (HZ)	1.17			XM 113.000
PHASE/HZ	3/60	WK2 (lb-ft2)	0.335			

Vector PWM Inverer Duty
Vaiaable Speed AC Motor Curves



Calculated Data

Data Valid For Nameplate Speed Range only

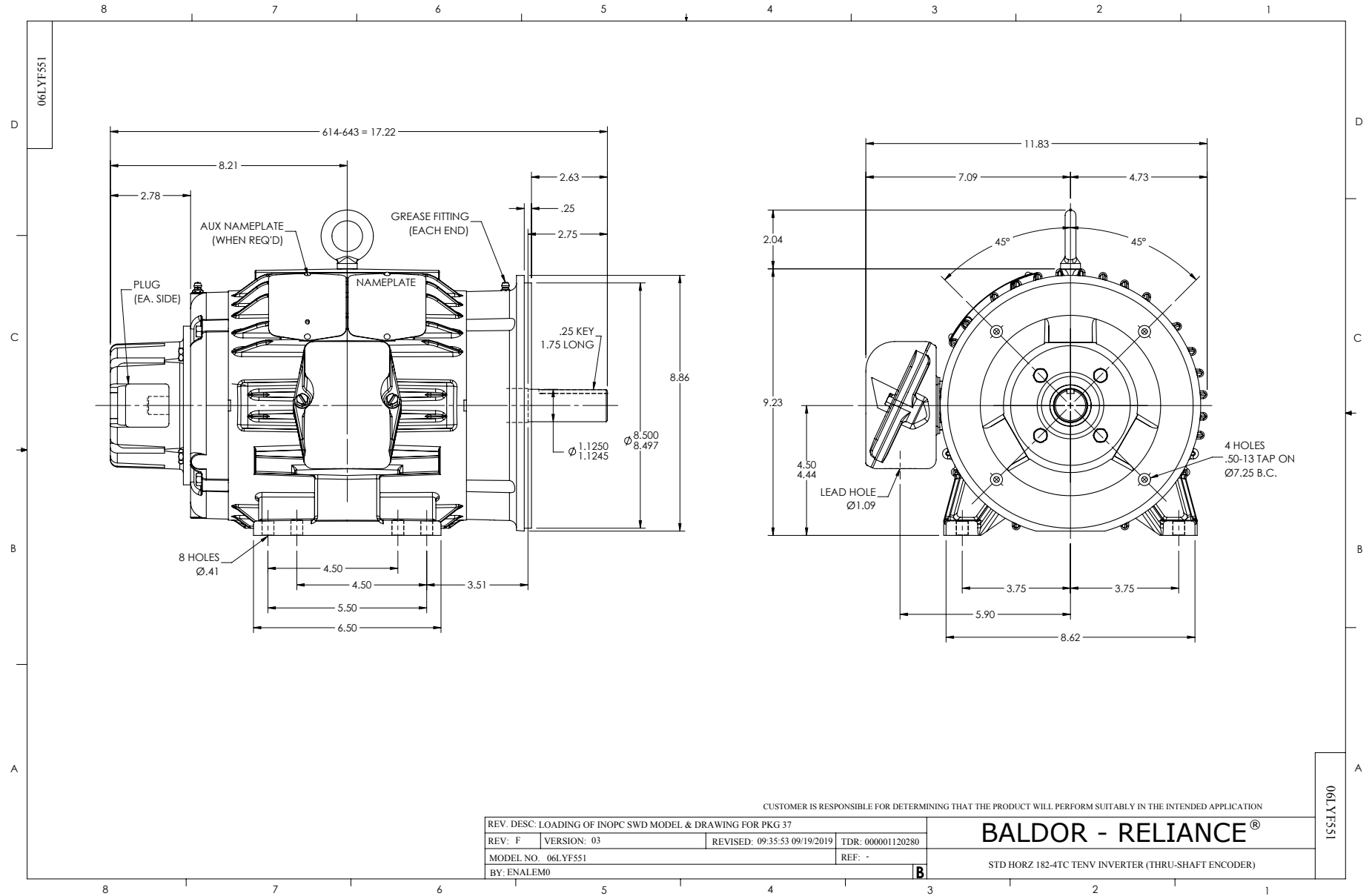


DR BY USJIJON
 CK BY CD
 APP BY USJIJON
 DATE 11/1/2024

**A-C MOTOR
PERFORMANCE
CURVES**

06WGX370

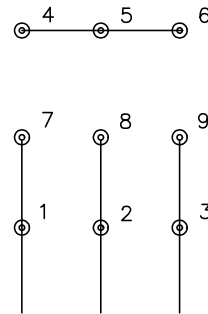
Record: 66036



CD0005

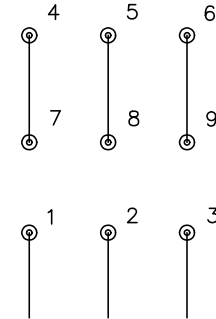


LOW VOLTAGE
(2Y)



LINE

HIGH VOLTAGE
(1Y)



LINE

NOTES:

1. INTERCHANGE ANY TWO LINE LEADS TO REVERSE ROTATION.
2. OPTIONAL THERMOSTATS ARE PROVIDED WHEN SPECIFIED.
3. ACTUAL NUMBER OF INTERNAL PARALLEL CIRCUITS MAY BE A MULTIPLE OF THOSE SHOWN ABOVE.
4. LEAD COLORS ARE OPTIONAL. LEADS MUST ALWAYS BE NUMBERED AS SHOWN.

CD0005

REV. DESC: REVISE TO SHOW OPTIONAL COLORS			
REV. LTR: E	BY: JLP	REVISED: 01/19/99 10:15	TDR: 0171435
S00000		FILE: AAA00005140	MDL: -
		MTL: -	

BALDOR ELECTRIC Co.

3PH, DV, 9 LEADS