

BALDOR • RELIANCE

Customer information packet

IDNM2333T

15HP, 1765RPM, 3PH, 60HZ, 254TC, 0948M, TENV

Class - None

Division - Not Applicable

Specifications

Enclosure	TENV
Frame	254TC
Frame Material	Iron
Frequency	60.00 Hz
Haz Area Class and Group	None
Haz Area Division	Not Applicable
Motor Letter Type	Three Phase
Output @ Frequency	15.000 HP @ 60 HZ
Phase	3
Synchronous Speed @ Frequency	1800 RPM @ 60 HZ
Voltage @ Frequency	230.0 V @ 60 HZ 460.0 V @ 60 HZ
Agency Approvals	UR CSA
Ambient Temperature	40 °C
Auxiliary Box	NO AUXILLARY BOX
Auxiliary Box Lead Termination	None
Base Indicator	Rigid
Bearing Grease Type	Polyrex EM (-20F +300F)
Blower	None
Current @ Voltage	18.500 A @ 460.0 V 37.000 A @ 230.0 V
Design Code	A
Drip Cover	No Drip Cover
Duty Rating	CONT
Efficiency @ 100% Load	92.4 %
Electrically Isolated Bearing	Not Electrically Isolated
Feedback Device	NO FEEDBACK
Front Face Code	Encoder/Feedback Device
Front Shaft Indicator	None
Heater Indicator	No Heater
High Voltage Full Load Amps	18.5 a

Part detail

Revision	AM
Type	AC
Mech. spec.	09F278
Base	
Status	PRD/A
Elec. spec.	09WGX946
Layout	09LYF278
Eff. date	08-28-2025
CD Diagram	CD0005
Poles	04
Leads	9#12
Proprietary	False
Created date	01-01-0001

Insulation Class	H
Inverter Code	Inverter Duty
KVA Code	K
Lifting Lugs	Standard Lifting Lugs
Locked Bearing Indicator	Locked Bearing
Max Speed	5000 rpm
Motor Lead Exit	Ko Box
Motor Lead Quantity/Wire Size	9 @ 12 AWG
Motor Lead Termination	Flying Leads
Motor Standards	NEMA
Motor Type	0948M
Mounting Arrangement	F1
Number of Poles	4
Overall Length	24.05 IN
Power Factor	80
Product Family	General Purpose
Pulley End Bearing Type	Ball
Pulley Face Code	C-Face
Pulley Shaft Indicator	Standard
Rodent Screen	None
Service Factor	1.00
Shaft Diameter	1.625 IN
Shaft Extension Location	Pulley End
Shaft Ground Indicator	No Shaft Grounding
Shaft Rotation	Reversible
Shaft Slinger Indicator	Shaft Slinger
Speed	1765 rpm
Speed Code	Single Speed
Starting Method	Direct on line
Thermal Device - Bearing	None
Thermal Device - Winding	Normally Closed Thermostat
Vibration Sensor Indicator	No Vibration Sensor
Winding Thermal 1	None
Winding Thermal 2	None

Nameplate

NP1163L	
CAT NO	IDNM2333T
SPEC.	09F278X946G1
FRAME	254TC HP 15 TE
VOLTS	230/460
MAG CUR	17.8/8.9 FLA 37/18.5
RPM	1765 RPM MAX 5000
HZ	60 PH 3 CLASS H
SER.F.	1.00 DES A SL HZ 1
NEMA-NOM-EFF	92.4 WK2 2.1
BLWR V	PH HZ A
RATING	40C AMB-CONT
DE BRG	6309 ODE BRG 6208
CC	010A SN 1000:1 CT, 1000:1 VT

**AC Induction Motor Performance Data**

Record # 1828

Typical performance - not guaranteed values

Winding: 09WGX946	Type: 0948M	Enclosure: TENV
--------------------------	--------------------	------------------------

Nameplate Data			General Characteristics at 460 V, 60 Hz: High Volt Connection		
Rated Output (HP)	15		Full Load Torque	45 LB-FT	
Volts	230/460		Start Configuration	DOL	
Full Load Amps	37/18.5		Break Down Torque	176 LB-FT	
R.P.M.	1765		Pull-Up Torque	91 LB-FT	
Hz	60	Phase	Locked-rotor Torque	102 LB-FT	
NEMA Design Code	A	KV/A Code	Starting Current	161 Amps	
Service Factor	1		No-load Current	8.9 Amps	
NEMA Nom. Eff.	94.1	P.F.	Line-line Res. @ 25°C.	0.464 Ohms	
Rating - Duty	40C AMB-CONT		Temp. Rise @ Rated Load	89°C	
S.F. Amps			Temp. Rise @ S.F. Load		

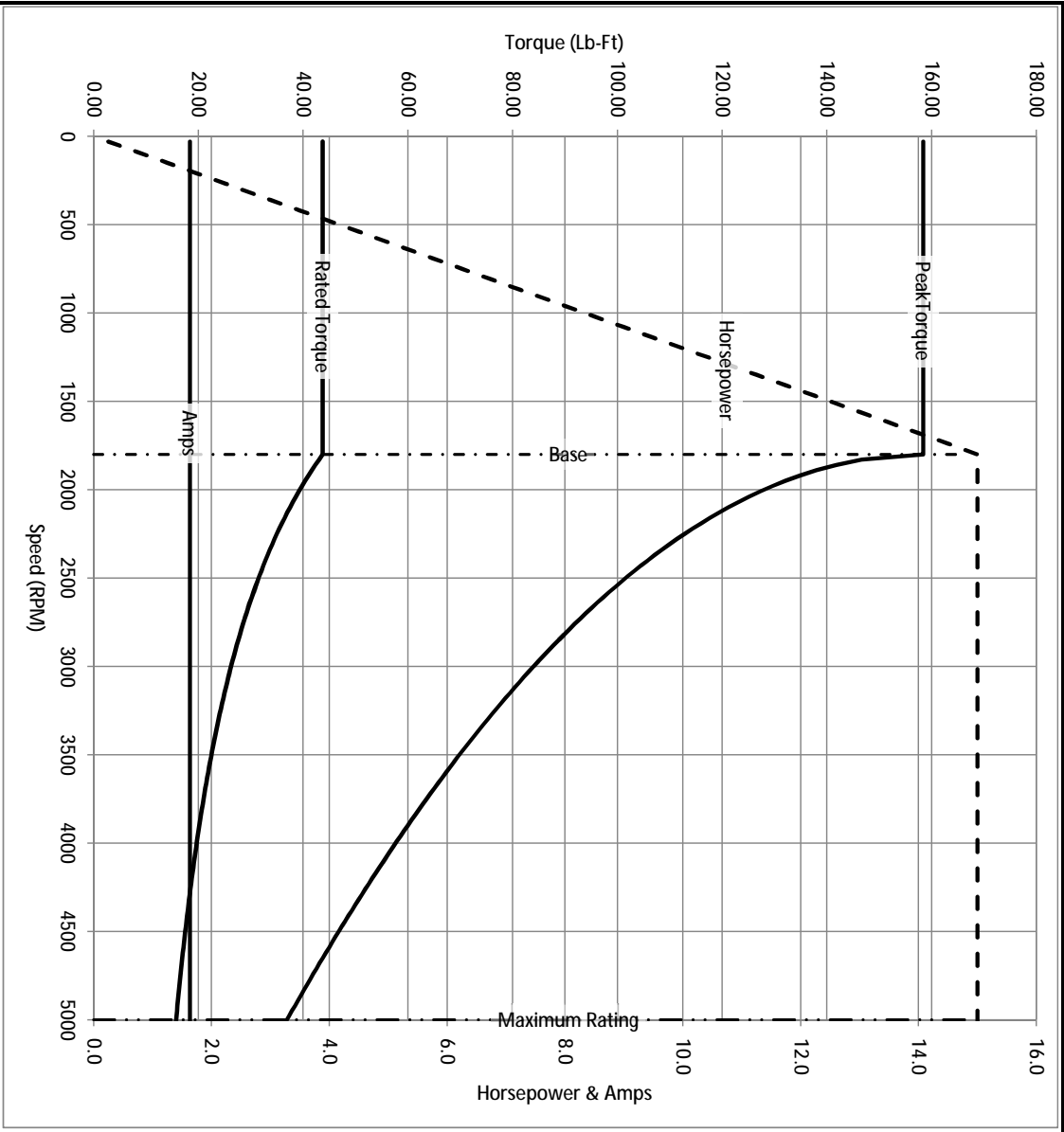
Load Characteristics at 460 Volts, 60 Hz, 15 HP

% of Rated Load	25	50	75	100	125	150	S.F.
Power Factor	40	63	74	81	84	86	
Efficiency	88.7	93	94	94.1	93.7	93.2	
Speed	1793	1787	1780	1771	1763	1755	
Line Amperes	9.9	12	15	18.4	22.2	26.3	

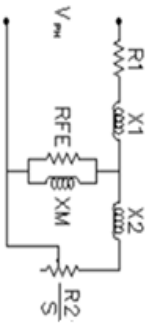
Baldor Electric Company Fort Smith, Arkansas

BALDOR • RELIANCE

Catalog	IDNM2333T	NP VOLTS	230/460	ENCLOSURE	TENV	WVE CONN. EQ. CKT. OHMS PER PHASE (BASE RATING, 20C)
FRAME	254TC	NP AMPS	37/18.5	Base Volts	460	R1 0.216 X1 0.904
HP	15 HP	DUTY	Cont	Base AMPS	18.4	R2 0.181 X2 1.094
BASE SPEED	1800	MAX SAFE RPM	5000	Slip Hz	0.97	XM1 26.421
PHASE/HZ	3/60	AMB ⁰ /C/INSUL.	40/H	WK ² (lb-ft ²)	2.1	



Remarks: Calculated Data



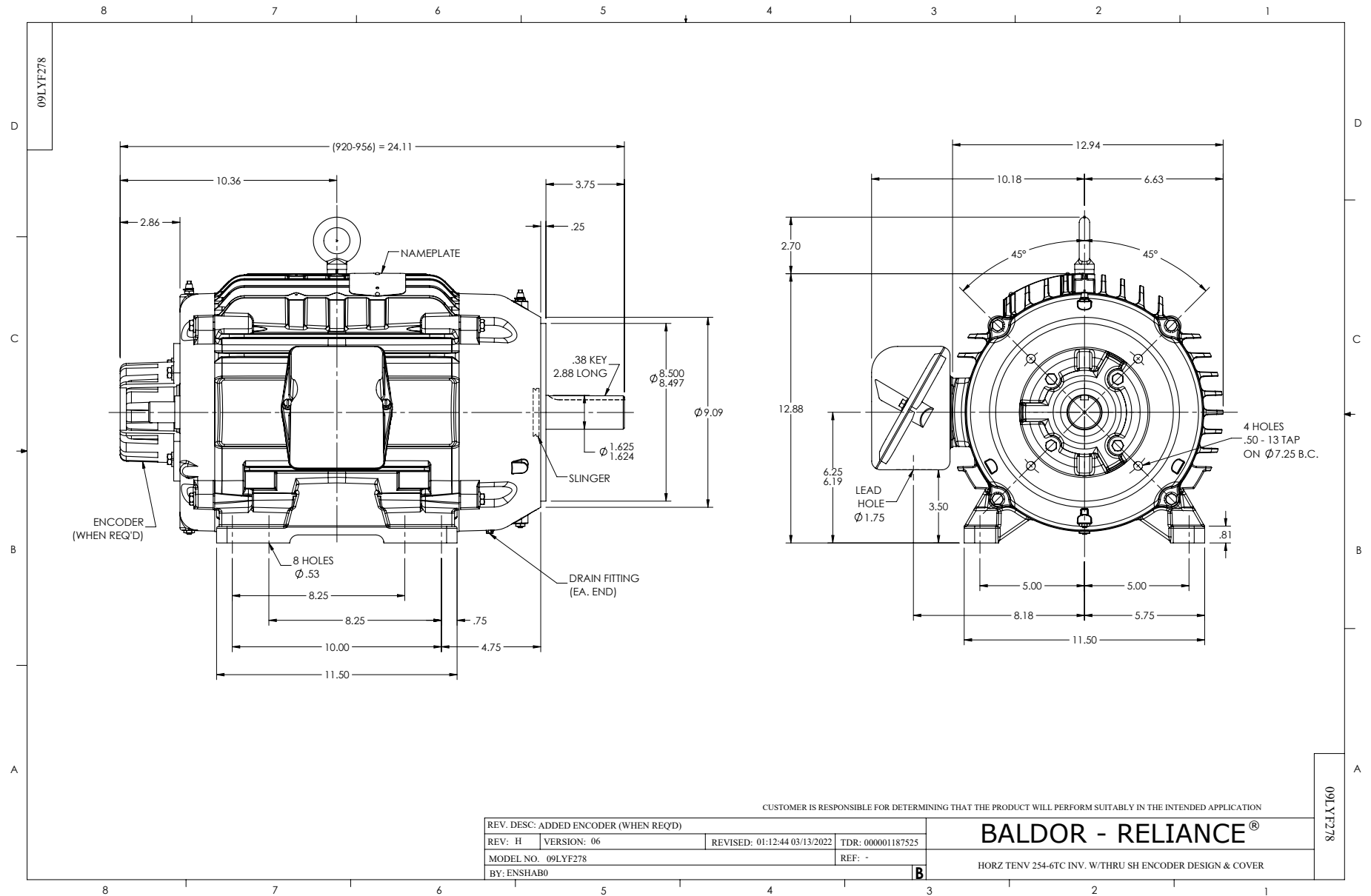
BALDOR
A MEMBER OF THE ABB GROUP

DR BY ENR
CK BY
APP BY ENR
DATE 2/28/2013

A-C MOTOR
PERFORMANCE CURVES

09F278X946G1

ISSUE DATE 2/28/2013



CD0005



LOW VOLTAGE
(2Y)



LINE

HIGH VOLTAGE
(1Y)



LINE

NOTES:

1. INTERCHANGE ANY TWO LINE LEADS TO REVERSE ROTATION.
2. OPTIONAL THERMOSTATS ARE PROVIDED WHEN SPECIFIED.
3. ACTUAL NUMBER OF INTERNAL PARALLEL CIRCUITS MAY BE A MULTIPLE OF THOSE SHOWN ABOVE.
4. LEAD COLORS ARE OPTIONAL. LEADS MUST ALWAYS BE NUMBERED AS SHOWN.

CD0005

REV. DESC: REVISE TO SHOW OPTIONAL COLORS			
REV. LTR: E	BY: JLP	REVISED: 01/19/99 10:15	TDR: 0171435
S00000		FILE: AAA00005140	MDL: -
		MTL: -	

BALDOR ELECTRIC Co.

3PH, DV, 9 LEADS