



Customer information packet

IDNM2238T

10HP, 1770RPM, 3PH, 60HZ, 256TC, 0948M, TENV

Class - None

Division - Not Applicable

Specifications

Enclosure	TENV
Frame	256TC
Frame Material	Iron
Frequency	60.00 Hz
Haz Area Class and Group	None
Haz Area Division	Not Applicable
Motor Letter Type	Three Phase
Output @ Frequency	10.000 HP @ 60 HZ
Phase	3
Synchronous Speed @ Frequency	1800 RPM @ 60 HZ
Voltage @ Frequency	230.0 V @ 60 HZ 460.0 V @ 60 HZ
Agency Approvals	UR CSA
Ambient Temperature	40 °C
Auxiliary Box	NO AUXILLARY BOX
Auxiliary Box Lead Termination	None
Base Indicator	Rigid
Bearing Grease Type	Polyrex EM (-20F +300F)
Blower	None
Current @ Voltage	13.000 A @ 460.0 V 26.000 A @ 230.0 V
Design Code	A
Drip Cover	No Drip Cover
Duty Rating	CONT
Efficiency @ 100% Load	91.7 %
Electrically Isolated Bearing	Not Electrically Isolated
Feedback Device	NO FEEDBACK
Front Face Code	Encoder/Feedback Device
Front Shaft Indicator	None
Heater Indicator	No Heater
High Voltage Full Load Amps	13.0 a

Part detail

Revision	AL
Type	AC
Mech. spec.	09F278
Base	
Status	PRD/A
Elec. spec.	09WGY402
Layout	09LYF278
Eff. date	08-28-2025
CD Diagram	CD0005
Poles	04
Leads	9#12
Proprietary	False
Created date	01-01-0001

Insulation Class	H
Inverter Code	Inverter Duty
KVA Code	K
Lifting Lugs	Standard Lifting Lugs
Locked Bearing Indicator	Locked Bearing
Max Speed	5000 rpm
Motor Lead Exit	Ko Box
Motor Lead Quantity/Wire Size	9 @ 12 AWG
Motor Lead Termination	Flying Leads
Motor Standards	NEMA
Motor Type	0948M
Mounting Arrangement	F1
Number of Poles	4
Overall Length	24.05 IN
Power Factor	78
Product Family	General Purpose
Pulley End Bearing Type	Ball
Pulley Face Code	C-Face
Pulley Shaft Indicator	Standard
Rodent Screen	None
Service Factor	1.00
Shaft Diameter	1.625 IN
Shaft Extension Location	Pulley End
Shaft Ground Indicator	No Shaft Grounding
Shaft Rotation	Reversible
Shaft Slinger Indicator	Shaft Slinger
Speed	1770 rpm
Speed Code	Single Speed
Starting Method	Direct on line
Thermal Device - Bearing	None
Thermal Device - Winding	Normally Closed Thermostat
Vibration Sensor Indicator	No Vibration Sensor
Winding Thermal 1	None
Winding Thermal 2	None

Nameplate

NP1163					
CAT NO	IDNM2238T				
SPEC.	09F278Y402G1				
FRAME	256TC	HP	10 TE		
VOLTS	230/460				
MAG CUR	11.2/5.6	FLA	26/13		
RPM	1770	RPM MAX	5000		
HZ	60	PH	3	CLASS	H
SER.F.	1.00	DES	A	SL HZ	0.9
NEMA-NOM-EFF	91.7	WK2	2.1		
BLWR V		PH		HZ	A
RATING	40C AMB-CONT				
DE BRG	6309	ODE BRG	6208		
CC	010A	SN			
	1000:1CT, 1000:1VT				

**AC Induction Motor Performance Data**

Record # 1989

Typical performance - not guaranteed values

Winding: 09WGY402	Type: 0948M	Enclosure: TENV
--------------------------	--------------------	------------------------

Nameplate Data			General Characteristics at 460 V, 60 Hz: High Volt Connection	
Rated Output (HP)	10		Full Load Torque	29.8 LB-FT
Volts	230/460		Start Configuration	DOL
Full Load Amps	26/13		Break Down Torque	133 LB-FT
R.P.M.	1770		Pull-Up Torque	54.7 LB-FT
Hz	60	Phase	Locked-rotor Torque	71.1 LB-FT
NEMA Design Code	B	KV/A Code	Starting Current	106 Amps
Service Factor	1		No-load Current	5.6 Amps
NEMA Nom. Eff.	91.7	P.F.	Line-line Res. @ 25°C.	0.684 Ohms
Rating - Duty	40C AMB-CONT		Temp. Rise @ Rated Load	66°C
S.F. Amps			Temp. Rise @ S.F. Load	

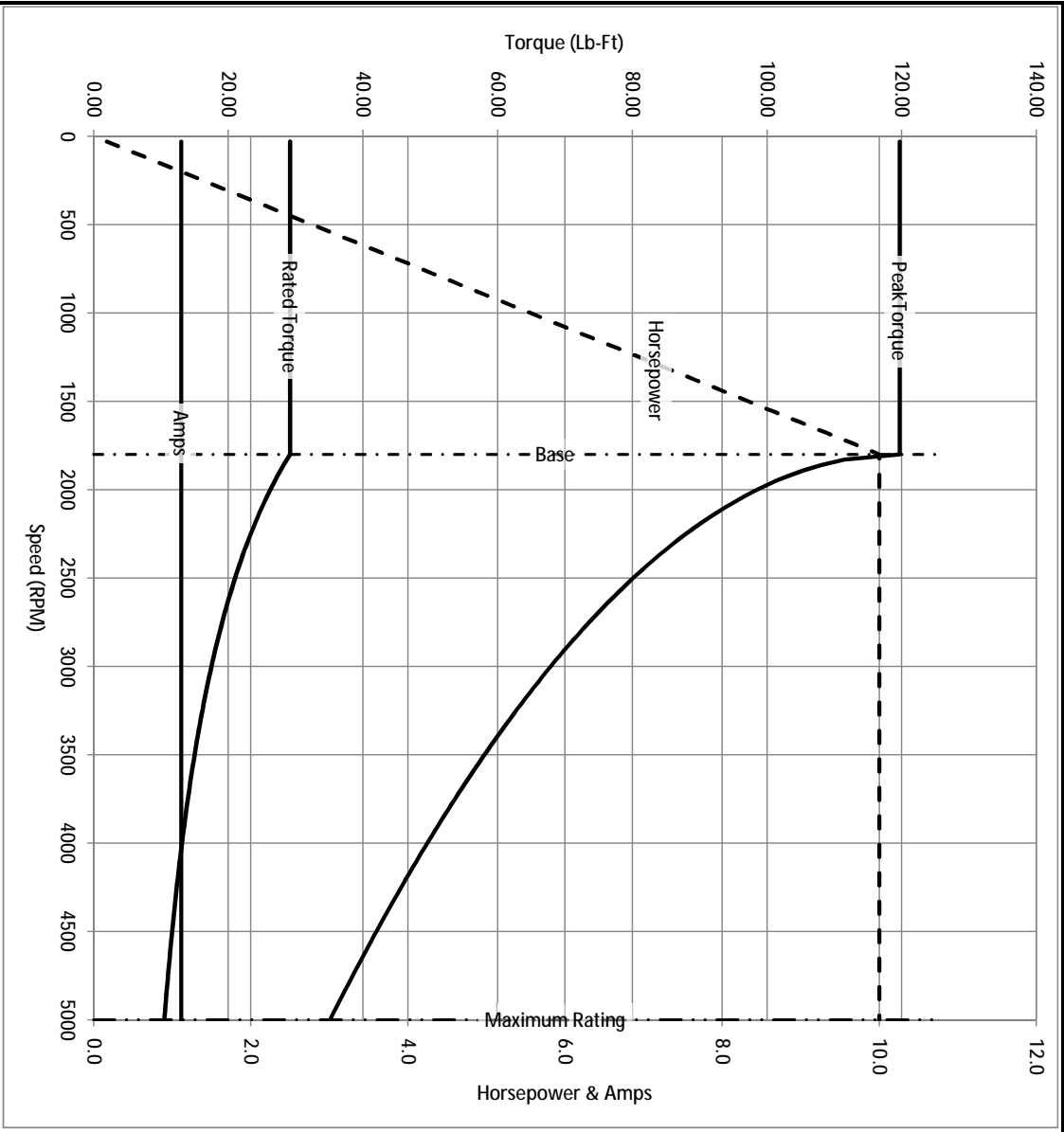
Load Characteristics at 460 Volts, 60 Hz, 10 HP

% of Rated Load	25	50	75	100	125	150	S.F.
Power Factor	42	61	73	78	81	82	
Efficiency	87	91.2	92.3	92.2	91.7	90.8	
Speed	1793	1787	1780	1773	1766	1757	
Line Amperes	6.58	8.12	10.4	13	15.7	18.8	

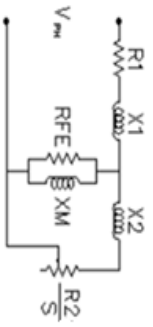
Baldor Electric Company Fort Smith, Arkansas

BALDOR • RELIANCE

Catalog	IDNM2238T	NP VOLTS	230/460	ENCLOSURE	TENV	WVE CONN EQ CKT OHMS PER PHASE (BASE RATING, 20C)			
FRAME	256TC	NP AMPS	26/13	Base Volts	460	R1	0.332	X1	1.364
HP	10 HP	DUTY	Cont	Base AMPS	13	R2	0.268	X2	1.646
BASE SPEED	1800	MAX SAFE RPM	5000	Slip Hz	0.90			XM1	45.205
PHASE/HZ	3/60	AMB ⁰ /INSUL	40/H	WK ² (lb-ft ²)	2.1				



Remarks: Calculated Data



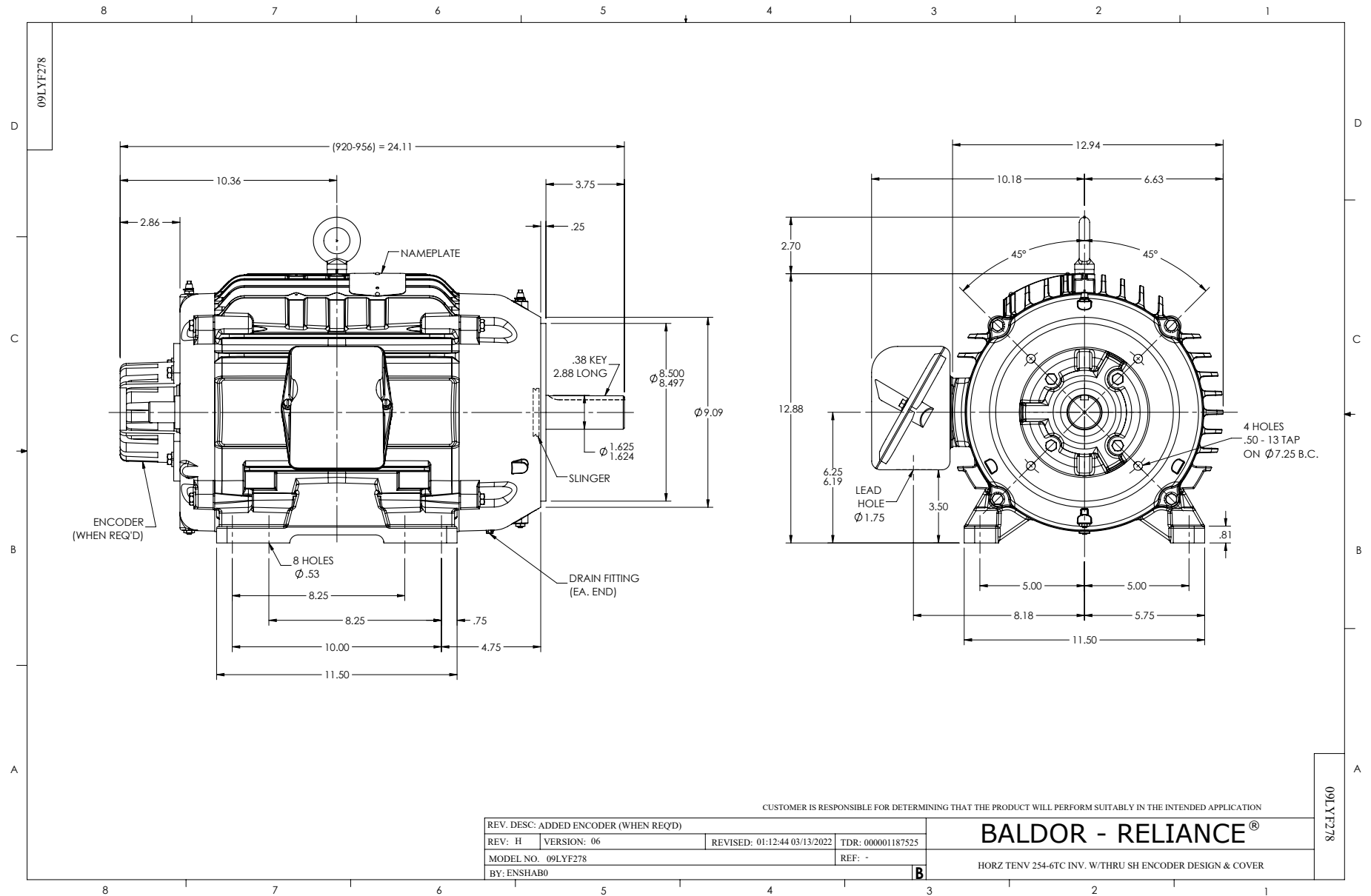
BALDOR
A MEMBER OF THE ABB GROUP

DR BY ENR
CK BY
APP BY ENR
DATE 2/28/2013

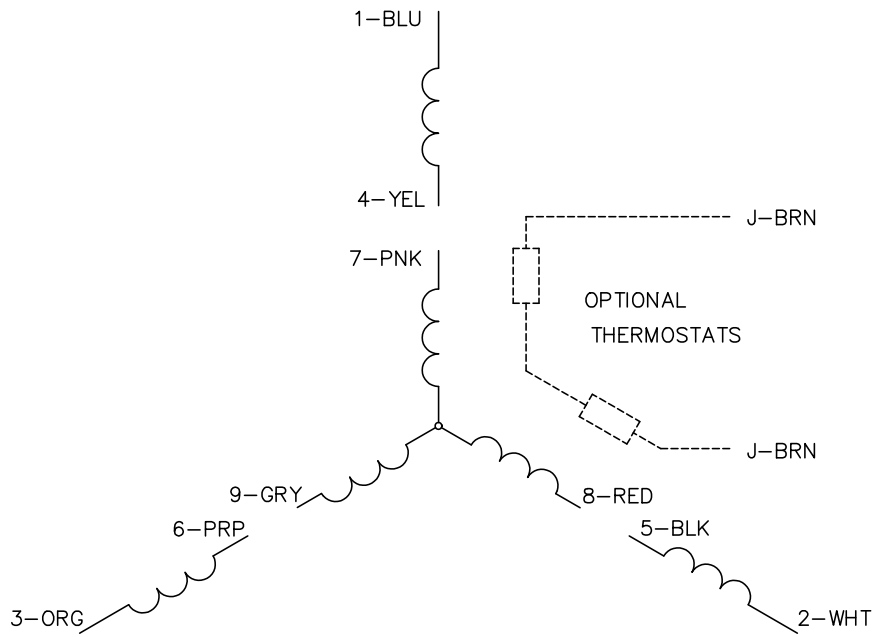
A-C MOTOR
PERFORMANCE CURVES

09F278Y402G1

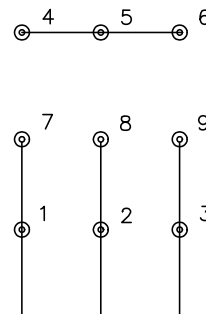
ISSUE DATE 2/28/2013



CD0005

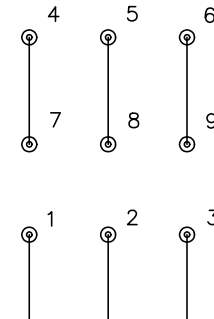


LOW VOLTAGE
(2Y)



LINE

HIGH VOLTAGE
(1Y)



LINE

NOTES:

1. INTERCHANGE ANY TWO LINE LEADS TO REVERSE ROTATION.
2. OPTIONAL THERMOSTATS ARE PROVIDED WHEN SPECIFIED.
3. ACTUAL NUMBER OF INTERNAL PARALLEL CIRCUITS MAY BE A MULTIPLE OF THOSE SHOWN ABOVE.
4. LEAD COLORS ARE OPTIONAL. LEADS MUST ALWAYS BE NUMBERED AS SHOWN.

CD0005

REV. DESC: REVISE TO SHOW OPTIONAL COLORS			
REV. LTR: E	BY: JLP	REVISED: 01/19/99 10:15	TDR: 0171435
S00000		FILE: AAA00005140	MDL: -
		MTL: -	

BALDOR ELECTRIC Co.

3PH, DV, 9 LEADS