

ABB BALDOR RELIANCE III

Customer information packet

IDM4115T

50HP, 1775RPM, 3PH, 60HZ, 326T, 1272M, TEBC, F1

Class - None

Division - Not Applicable

Specifications

Enclosure	TEBC
Frame	326T
Frame Material	Iron
Frequency	60.00 Hz
Haz Area Class and Group	None
Haz Area Division	Not Applicable
Motor Letter Type	Three Phase
Output @ Frequency	50.000 HP @ 60 HZ
Phase	3
Synchronous Speed @ Frequency	1800 RPM @ 60 HZ
Voltage @ Frequency	230.0 V @ 60 HZ 460.0 V @ 60 HZ
Agency Approvals	UR CSA
Ambient Temperature	40 °C
Auxiliary Box	NO AUXILLARY BOX
Auxiliary Box Lead Termination	None
Base Indicator	Rigid
Bearing Grease Type	Polyrex EM (-20F +300F)
Blower	BLOWER
Current @ Voltage	116.000 A @ 230.0 V 58.000 A @ 460.0 V
Design Code	A
Drip Cover	No Drip Cover
Duty Rating	CONT
Efficiency @ 100% Load	94.5 %
Electrically Isolated Bearing	Not Electrically Isolated
Feedback Device	NO FEEDBACK
Front Shaft Indicator	None
Heater Indicator	No Heater
High Voltage Full Load Amps	58.0 a
Insulation Class	H

Part Detail

Revision	F
Type	AC
Mech. spec.	12T107
Base	
Status	PRD/A
Elec. spec.	12WGZ279
Layout	12LYT107
Eff. date	08-18-2025
CD Diagram	CD0180
Poles	04
Leads	9#8
Proprietary	False
Created date	02-03-2021

Inverter Code	Inverter Duty
KVA Code	H
Lifting Lugs	Standard Lifting Lugs
Locked Bearing Indicator	Locked Bearing
Max Speed	3900 rpm
Motor Lead Quantity/Wire Size	9 @ 6 AWG
Motor Lead Termination	Flying Leads
Motor Standards	NEMA
Motor Type	1272M
Mounting Arrangement	F1
Number of Poles	4
Overall Length	36.92 IN
Power Factor	85
Product Family	General Purpose
Pulley End Bearing Type	Ball
Pulley Face Code	Standard
Pulley Shaft Indicator	Standard
Rodent Screen	None
RoHS Status	ROHS NON-COMPLIANT
Service Factor	1.00
Shaft Diameter	2.125 IN
Shaft Ground Indicator	No Shaft Grounding
Shaft Rotation	Reversible
Shaft Slinger Indicator	Shaft Slinger
Speed	1775 rpm
Speed Code	Single Speed
Starting Method	Direct on line
Thermal Device - Bearing	None
Thermal Device - Winding	Normally Closed Thermostat
Vibration Sensor Indicator	No Vibration Sensor
Winding Thermal 1	None
Winding Thermal 2	None

Nameplate

NP1163L	
CAT NO	IDM4115T
SPEC.	12T107Z279G1
FRAME	326T HP 50 TE
VOLTS	230/460
MAG CUR	40/20 FLA 116/58
RPM	1775 RPM MAX 3900
HZ	60 PH 3 CLASS H
SER.F.	1.00 DES A SL HZ 0.83
NEMA-NOM-EFF	94.5 WK2 9.59
BLWR V	PH HZ A
RATING	40C AMB-CONT
DE BRG	6312 ODE BRG 6311
CC	010A SN 1000:1 CT, 1000:1 VT

NP VOLTS	230/460	MAX SAFE RPM	2700	WYE CONN EQ CKT OHMS PER PHASE (BASE RATING, 20C)			
NP AMPS	116/58	Base Volt	460	R1	0.057	X1	0.352
HP	50HP	NL AMPS	20.8	R2	0.050	X2	0.440
BASE SPEED	1800	Slips (Hz)	0.80			XM	11.900
PHASE/HZ	3/60	WK ² (lb-ft ²)	9.59				

Rated Full Load Data

	RPM	HP	Torque	Volts	Freq-Hz	Amps
Base Speed	1776	50.1	148.0	460	60	57.9
Max Speed	2663	50.0	98.5	460	90	55.9
Min Speed	0	0.0	148.0	18.38	0.80	57.9

Load Performance at Base Speed

	RPM	HP	Torque	Volts	Freq-Hz	Amps
No Load	1799	0.0	0.0	460	60	20.8
1/4	1794	12.5	36.5	460	60	24.8
1/2	1788	25.0	73.5	460	60	33.9
3/4	1782	37.7	111.0	460	60	45.3
Full Load	1776	50.1	148.0	460	60	57.9
O/L	1753	99.8	299.0	460	60	116.0

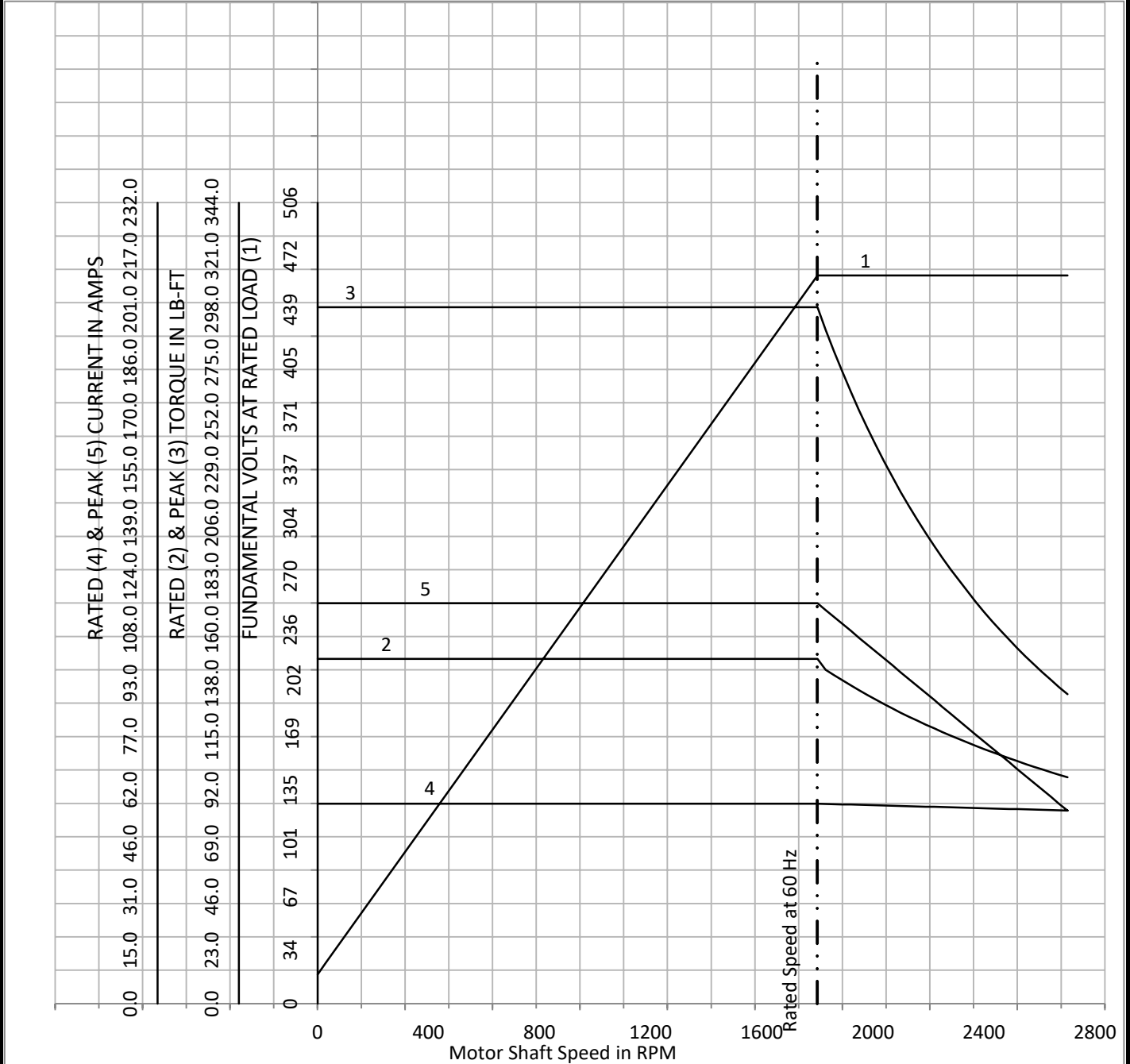
Blower Data	Volts	Ph/Hz	FL Amps	LR Amps	Frame	CFM

Remarks: Calculated Data
Vector PWM Inverter Duty

BALDOR • RELIANCE	DR BY	<u>BR</u>	A-C MOTOR PERFORMANCE CURVES	12WGZ279
	CK BY			
	APP BY	<u>BR</u>		
	DATE	<u>11/28/2023</u>		

NP VOLTS	230/460	MAX SAFE RPM	2700	WYE CONN EQ CKT OHMS PER PHASE (BASE RATING, 20C)			
NP AMPS	116/58	Base Volt	460	R1	0.057	X1	0.352
HP	50HP	NL AMPS	20.8	R2	0.050	X2	0.440
BASE SPEED	1800	Slips (Hz)	0.80			XM	11.900
PHASE/HZ	3/60	WK2 (lb-ft2)	9.59				

Vector PWM Inverter Duty
Variable Speed AC Motor Curves



Calculated Data

Data Valid For Nameplate Speed Range only

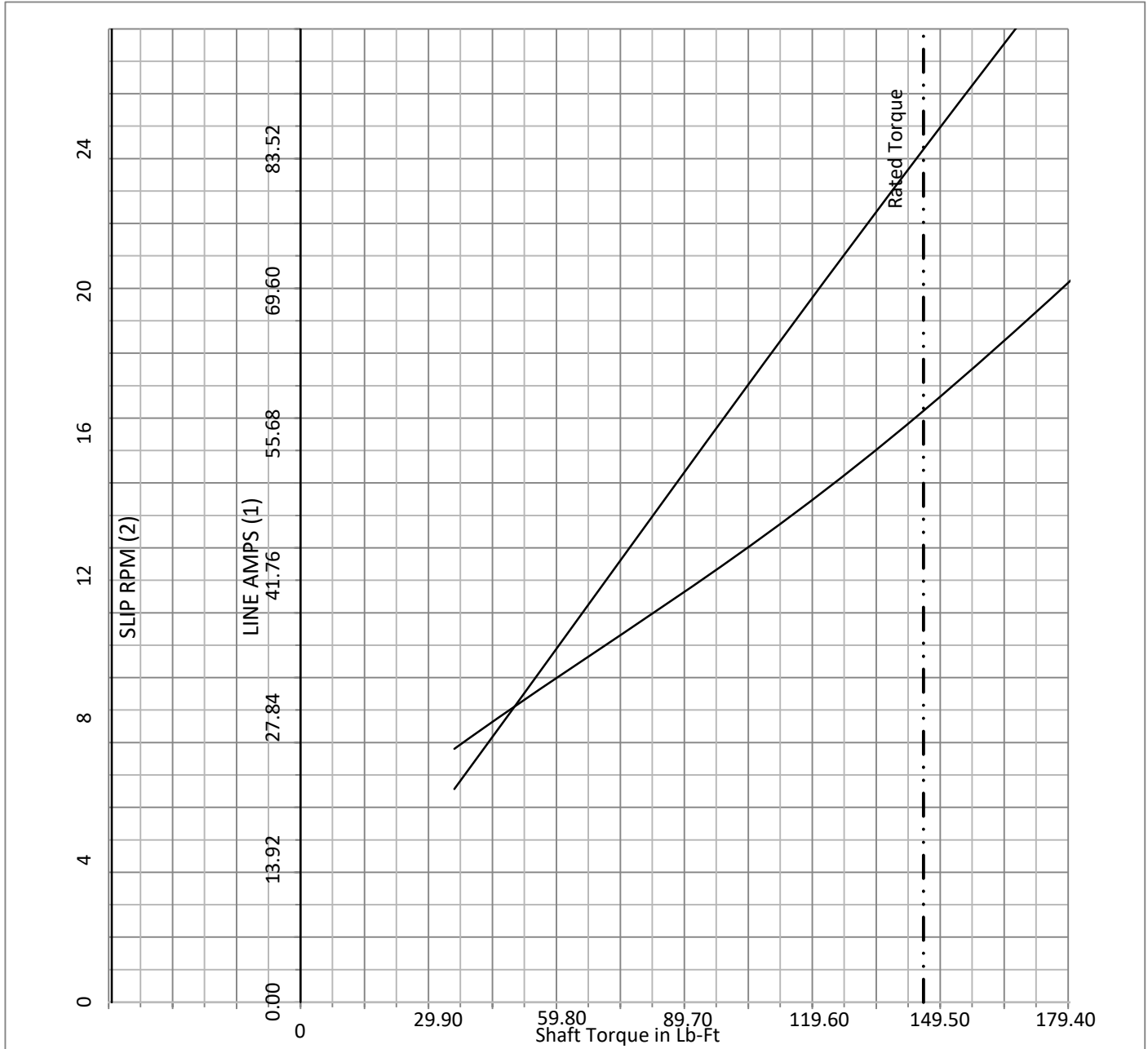


DR BY BR
 CK BY
 APP BY BR
 DATE 11/28/2023

A-C MOTOR
PERFORMANCE
CURVES
12WGZ279

NP VOLTS	230/460	MAX SAFE RPM	2700	WYE CONN EQ CKT OHMS PER PHASE (BASE RATING, 20C)			
NP AMPS	116/58	Base Volt	460	R1	0.057	X1	0.352
HP	50HP	NL AMPS	20.8	R2	0.050	X2	0.440
BASE SPEED	1800	Slips (Hz)	0.80			XM	11.900
PHASE/HZ	3/60	WK2 (lb-ft ²)	9.59				

Vector PWM Inverter Duty
Variable Speed AC Motor Curves



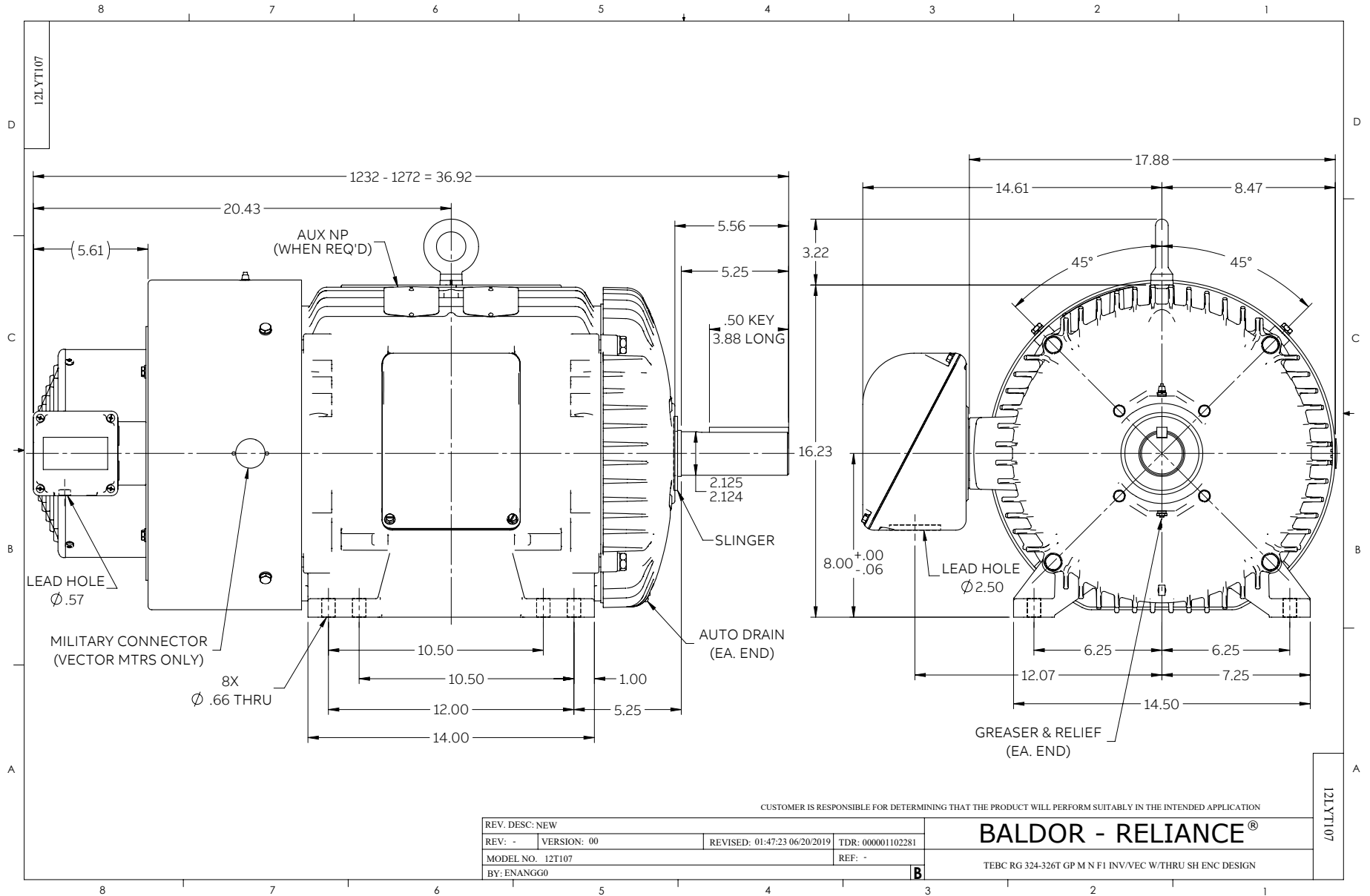
Calculated Data

Data Valid For Nameplate Speed Range only



DR BY BR
 CK BY
 APP BY BR
 DATE 11/28/2023

A-C MOTOR
PERFORMANCE
CURVES
12WGZ279



CD0180



LOW VOLTAGE
(2D)



HIGH VOLTAGE
(1D)



NOTES:

1. INTERCHANGE ANY TWO LINE LEADS TO REVERSE ROTATION.
2. OPTIONAL THERMOSTATS ARE PROVIDED WHEN SPECIFIED.
3. ACTUAL NUMBER OF INTERNAL PARALLEL CIRCUITS MAY BE A MULTIPLE OF THOSE SHOWN ABOVE.
4. LEAD COLORS ARE OPTIONAL. LEADS MUST ALWAYS BE NUMBERED AS SHOWN.

CD0180

REV. DESC: ADD CLASS CONN00000007		
REV. LTR: D	VERSION: 01	TDR: 000001099922
FILE: \AAA\00005\148	REVISED: 10: 25: 29 02/19/2019	BY: ENBRIRO
MTL: -	© □	

BALDOR - RELIANCE®

3PH, DV, 9 LEADS, DELTA CONNECTION

SH 1 of 1