

ABB BALDOR RELIANCE III



Customer information packet

IDM4100T

46M 6P TEBC HOR 284T TSTATS INV DUTY

Class - None

Division - Not Applicable

Specifications

Enclosure	TEBC
Frame	284T
Frame Material	Iron
Frequency	60.00 Hz
Haz Area Class and Group	None
Haz Area Division	Not Applicable
Motor Letter Type	Three Phase
Output @ Frequency	15.000 HP @ 60 HZ
Phase	3
Synchronous Speed @ Frequency	1200 RPM @ 60 HZ
Voltage @ Frequency	230.0 V @ 60 HZ 460.0 V @ 60 HZ
Agency Approvals	CSA UR
Ambient Temperature	40 °C
Auxiliary Box	NO AUXILLARY BOX
Auxiliary Box Lead Termination	None
Base Indicator	Rigid
Bearing Grease Type	Polyrex EM (-20F +300F)
Blower	BLOWER
Current @ Voltage	21.000 A @ 460.0 V 42.000 A @ 208.0 V 42.000 A @ 230.0 V
Design Code	A
Drip Cover	No Drip Cover
Duty Rating	CONT
Efficiency @ 100% Load	91.7 %
Electrically Isolated Bearing	Not Electrically Isolated
Feedback Device	NO FEEDBACK
Front Shaft Indicator	None
Heater Indicator	No Heater
High Voltage Full Load Amps	21.0 a

Part Detail

Revision	G
Type	AC
Mech. spec.	10T004
Base	
Status	PRD/A
Elec. spec.	10WGY561
Layout	10LYT004
Eff. date	08-18-2025
CD Diagram	CD0180
Poles	06
Leads	9#10
Proprietary	False
Created date	03-19-2019

Insulation Class	H
Inverter Code	Inverter Duty
KVA Code	H
Lifting Lugs	Standard Lifting Lugs
Locked Bearing Indicator	Locked Bearing
Max Speed	1800 rpm
Motor Lead Quantity/Wire Size	9 @ 10 AWG
Motor Lead Termination	Flying Leads
Motor Standards	NEMA
Motor Type	1046M
Mounting Arrangement	F1
Number of Poles	6
Overall Length	34.48 IN
Power Factor	73
Product Family	General Purpose
Pulley End Bearing Type	Ball
Pulley Face Code	Standard
Pulley Shaft Indicator	Standard
Rodent Screen	None
RoHS Status	ROHS COMPLIANT
Service Factor	1.00
Shaft Diameter	1.875 IN
Shaft Ground Indicator	No Shaft Grounding
Shaft Rotation	Reversible
Shaft Slinger Indicator	Shaft Slinger
Speed	1175 rpm
Speed Code	Single Speed
Starting Method	Direct on line
Thermal Device - Bearing	None
Thermal Device - Winding	Normally Closed Thermostat
Vibration Sensor Indicator	No Vibration Sensor
Winding Thermal 1	None
Winding Thermal 2	None

Nameplate

NP1163L	
CAT NO	IDM4100T
SPEC.	10T004Y561G1
FRAME	284T HP 15 TE
VOLTS	230/460
MAG CUR	22/11 FLA 42/21
RPM	1175 RPM MAX 1800
HZ	60 PH 3 CLASS H
SER.F.	1.00 DES A SL HZ 1.3
NEMA-NOM-EFF	91.7 WK2 4.9
BLWR V	PH HZ A
RATING	40C AMB-CONT
DE BRG	6311 ODE BRG 6309
CC	010A SN
	1000:1 CT, 1000:1 VT

NP VOLTS	230/460	Base Volt 460 NL AMPS 12.40 Slip (HZ) 0.75 WK ² (lb-ft ²) 5.630	WYE CONN EQ CKT OHMS PER PHASE (BASE RATING, 20c)			
NP AMPS	42/21		R1	0.265	X1	0.998
HP	15		R2	0.163	X2	1.200
BASE SPEED	1185				XM	19.000
PHASE/HZ	3/60					

Rated Full Load Data

	RPM	HP	Torque	Volts	Freq-Hz	Amps
Base Speed	1185	15.1	66.7	460	60	21.3
Max Speed	1778	15.0	44.4	460	90	18.0
CT Min Speed	1.185	0.015	66.7	0.46	0.06	21.3

Load Performance at Base Speed

	RPM	HP	Torque	Volts	Freq-Hz	Amps
No Load	1199	0.0	0.0	460	60	12.4
1/4	1196	3.8	16.5	460	60	13.2
1/2	1193	7.5	32.8	460	60	15.1
3/4	1189	11.3	49.7	460	60	17.9
Full Load	1185	15.1	66.7	460	60	21.3
O/L	1170	30.1	135.0	460	60	37.6

Blower Data

Volts	Ph/HZ	FL Amps	LR Amps	Frame	CFM

Remarks: Calculated Data



DR BY USBRRAN1
 CK BY CD
 APP BY USBRRAN1
 DATE 11/1/2024

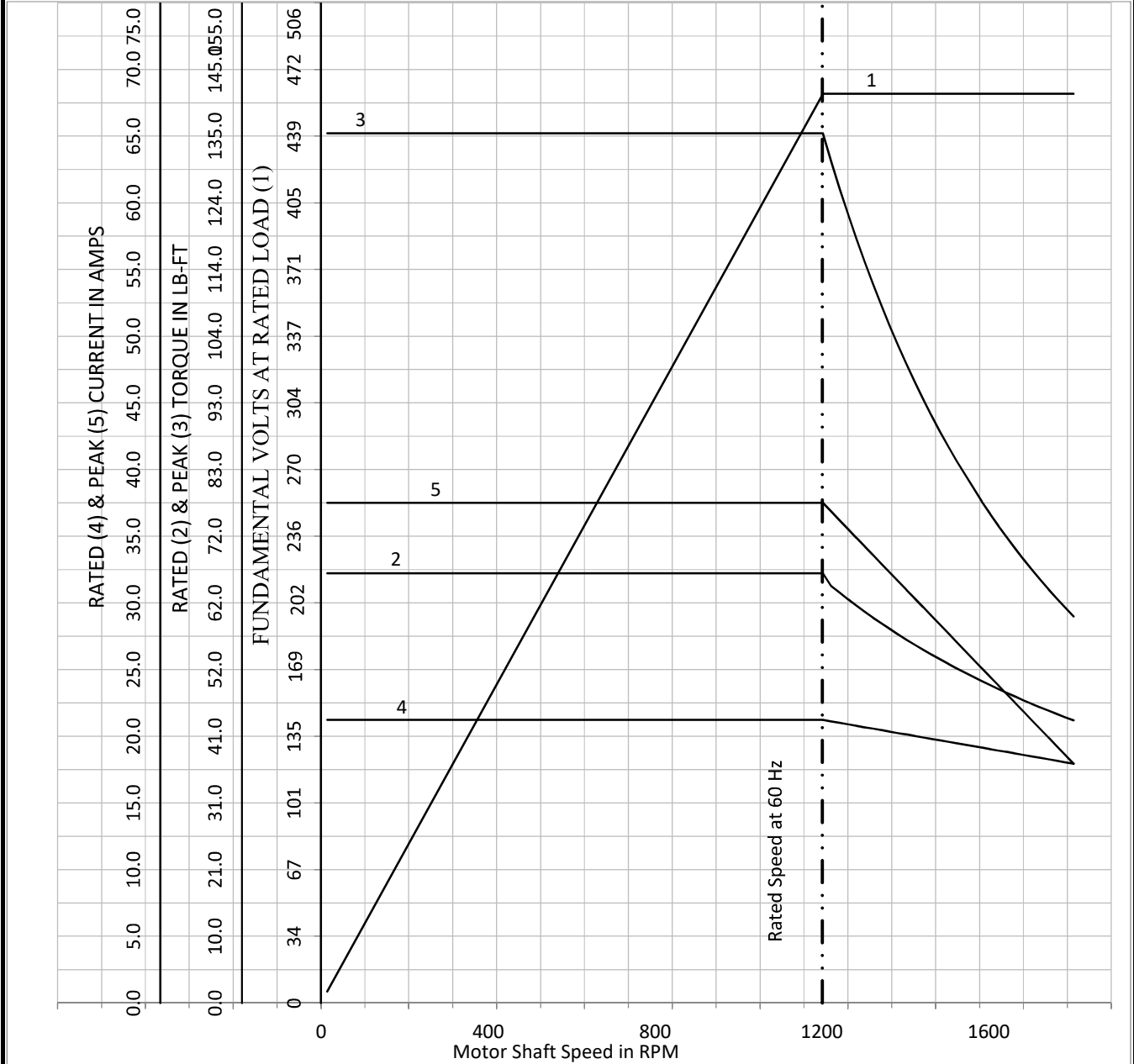
**A-C MOTOR
PERFORMANCE
CURVES**

10WGY561

Record: 68450

NP VOLTS	230/460	Base Volt	460	WYE CONN EQ CKT OHMS PER PHASE (BASE RATING, 20C)			
NP AMPS	42/21		R1	0.265	X1	0.998	
HP	15	NL AMPS	12.40	R2	0.163	X2	1.200
BASE SPEED	1185	Slip (HZ)	0.75			XM	19.000
PHASE/HZ	3/60	WK ² (lb-ft ²)	5.630				

Variable Speed AC Motor Curves



Calculated Data

Data Valid For Nameplate Speed Range only



DR BY USBRRAN1
 CK BY CD
 APP BY USBRRAN1
 DATE 11/1/2024

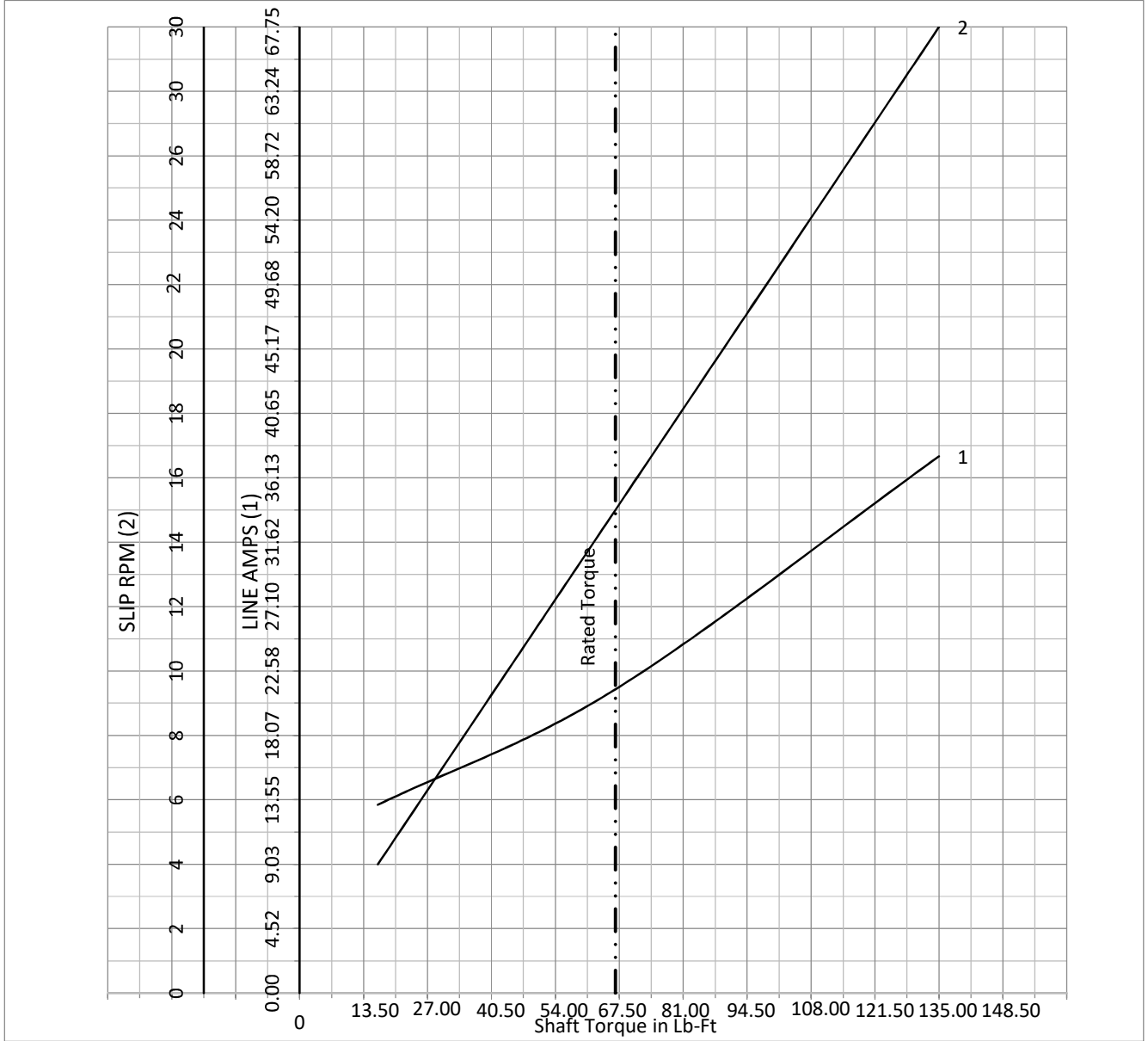
**A-C MOTOR
 PERFORMANCE
 CURVES**

10WGY561

Record: 68450

NP VOLTS	230/460	0	0	WYE CONN EQ CKT OHMS PER PHASE (BASE RATING, 20C)			
NP AMPS	42/21	Base Volt	460	R1	0.265	X1	0.998
HP	15	NL AMPS	12.40	R2	0.163	X2	1.200
BASE SPEED	1185	Slip (HZ)	0.75			XM	19.000
PHASE/HZ	3/60	WK2 (lb-ft ²)	5.630				

Vector PWM Inverter Duty
Variable Speed AC Motor Curves



Calculated Data

Data Valid For Nameplate Speed Range only

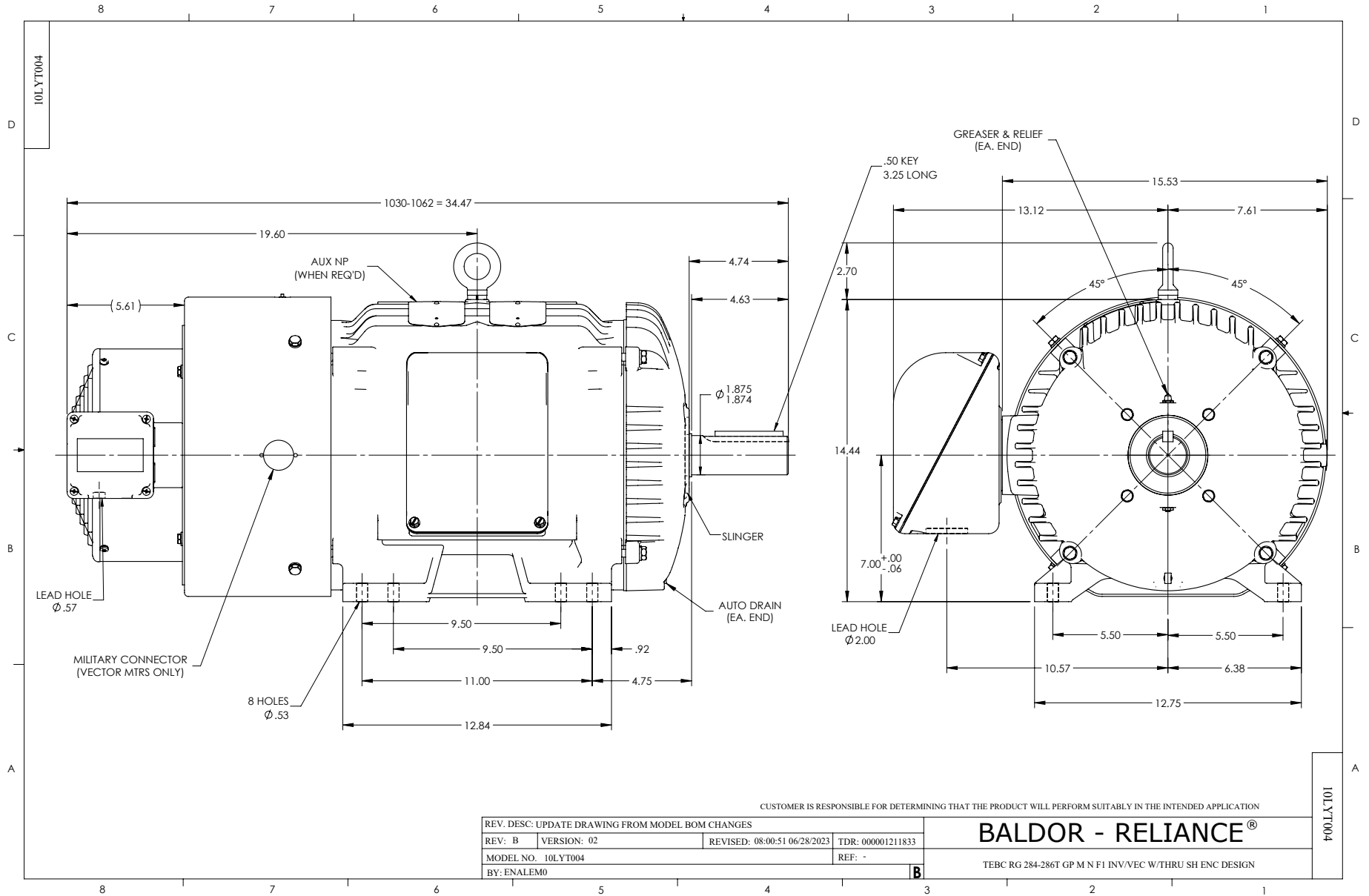


DR BY USBRRAN1
 CK BY CD
 APP BY USBRRAN1
 DATE 11/1/2024

**A-C MOTOR
PERFORMANCE
CURVES**

10WGY561

Record: 68450



CUSTOMER IS RESPONSIBLE FOR DETERMINING THAT THE PRODUCT WILL PERFORM SUITABLY IN THE INTENDED APPLICATION

REV. DESC: UPDATE DRAWING FROM MODEL BOM CHANGES			
REV: B	VERSION: 02	REVISED: 08:00:51 06/28/2023	TDR: 000001211833
MODEL NO. 10LYT004		REF: -	
BY: ENALEM0			

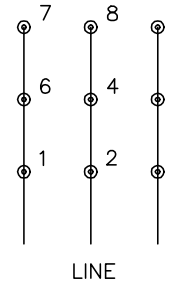
BALDOR - RELIANCE®

TEBC RG 284-286T GP M N F1 INV/VEC W/THRU SH ENC DESIGN

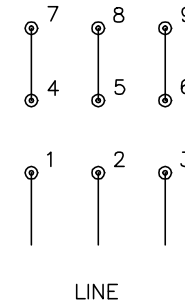
CD0180



LOW VOLTAGE
(2D)



HIGH VOLTAGE
(1D)



NOTES:

1. INTERCHANGE ANY TWO LINE LEADS TO REVERSE ROTATION.
2. OPTIONAL THERMOSTATS ARE PROVIDED WHEN SPECIFIED.
3. ACTUAL NUMBER OF INTERNAL PARALLEL CIRCUITS MAY BE A MULTIPLE OF THOSE SHOWN ABOVE.
4. LEAD COLORS ARE OPTIONAL. LEADS MUST ALWAYS BE NUMBERED AS SHOWN.

CD0180

REV. DESC: ADD CLASS CONN00000007		
REV. LTR: D	VERSION: 01	TDR: 000001099922
FILE: \AAA\00005\148	REVISED: 10:25:29 02/19/2019	BY: ENBRIRO
MTL: -	© □	

BALDOR - RELIANCE®

3PH, DV, 9 LEADS, DELTA CONNECTION

SH 1 of 1