

ABB BALDOR RELIANCE III

Customer information packet

IDM3774T

10HP, 1760RPM, 3PH, 60HZ, 215TC, 0748M, TEBC, F

Class - None

Division - Not Applicable

Specifications

Enclosure	TEBC
Frame	215TC
Frame Material	Iron
Frequency	60.00 Hz
Haz Area Class and Group	None
Haz Area Division	Not Applicable
Motor Letter Type	Three Phase
Output @ Frequency	10.000 HP @ 60 HZ
Phase	3
Synchronous Speed @ Frequency	1800 RPM @ 60 HZ
Voltage @ Frequency	230.0 V @ 60 HZ 460.0 V @ 60 HZ
Agency Approvals	UR CSA
Ambient Temperature	40 °C
Auxiliary Box	NO AUXILLARY BOX
Auxiliary Box Lead Termination	None
Base Indicator	Rigid
Bearing Grease Type	Polyrex EM (-20F +300F)
Blower	BLOWER
Current @ Voltage	12.500 A @ 460.0 V 25.000 A @ 230.0 V
Design Code	A
Drip Cover	No Drip Cover
Duty Rating	CONT
Efficiency @ 100% Load	92.4 %
Electrically Isolated Bearing	Not Electrically Isolated
Feedback Device	NO FEEDBACK
Front Shaft Indicator	None
Heater Indicator	No Heater
High Voltage Full Load Amps	12.5 a
Insulation Class	H

Part Detail

Revision	F
Type	AC
Mech. spec.	07D515
Base	
Status	PRD/A
Elec. spec.	07WGX776
Layout	07LYD515
Eff. date	09-30-2025
CD Diagram	CD0005
Poles	04
Leads	9#14
Proprietary	False
Created date	03-15-2019

Inverter Code	Inverter Duty
KVA Code	H
Lifting Lugs	Standard Lifting Lugs
Locked Bearing Indicator	Locked Bearing
Max Speed	6000 rpm
Motor Lead Quantity/Wire Size	9 @ 14 AWG
Motor Lead Termination	Flying Leads
Motor Standards	NEMA
Motor Type	0748M
Mounting Arrangement	F1
Number of Poles	4
Overall Length	25.58 IN
Power Factor	82
Product Family	General Purpose
Pulley End Bearing Type	Ball
Pulley Face Code	C-Face
Pulley Shaft Indicator	Standard
Rodent Screen	None
RoHS Status	ROHS COMPLIANT
Service Factor	1.00
Shaft Diameter	1.375 IN
Shaft Ground Indicator	No Shaft Grounding
Shaft Rotation	Reversible
Shaft Slinger Indicator	No Slinger
Speed	1760 rpm
Speed Code	Single Speed
Starting Method	Direct on line
Thermal Device - Bearing	None
Thermal Device - Winding	Normally Closed Thermostat
Vibration Sensor Indicator	No Vibration Sensor
Winding Thermal 1	None
Winding Thermal 2	None

Nameplate

NP4009L					
CAT.NO.	IDM3774T				
SPEC.	07D515X776G1				
FRAME	215TC	H.P.	10 TE		
VOLTS	230/460				
MAG. CUR.	10.2/5.1	F.L. AMPS	25/12.5		
R.P.M.	1760	R.P.M. MAX	6000		
HZ.	60	PH.	3	CLASS	H
SER.F.	1.00	DES.	A	SL HZ	1.3
NEMA NOM. EFF.	92.4	WK2	1.18		
BLOWER	V	PH	HZ	AMPS	
RATING	40C AMB-CONT				
DE	6307	ODE	6206		
CC	010A	SN			
	1000:1 CT/VT				

Catalog	0	NP VOLTS	230/460	ENCLOSURE	TEFC	WYE CONN EQ CKT OHMS PER PHASE (BASE RATING, 20C)			
FRAME	215TC	NP AMPS	25/12.5	MAX SAFE RPM	2700	R1	0.507	X1	1.970
HP	10	DUTY	Cont	NL AMPS	5.12	R2	0.342	X2	1.580
BASE SPEED	1760	S.F.	1.00	P.F. @NL/FL	4.4/82			XM	48.300
PHASE/HZ	3/60	AMB ⁰ C/INSUL	40/F	WK ² (lb-ft ²)	1.18				

Rated Full Load Data

	RPM	HP	Torque	Volts	Freq-Hz	Amps
Base Speed	1762	10.0	29.8	460	60	12.3
Max Speed	2642	10.0	19.9	460	90	11.7
Min Speed	0	0.0	29.8	26.67	1.33	12.3

Load Performance at Base Speed

	RPM	HP	Torque	Volts	Freq-Hz	Amps
No Load	1799	0.0	0.0	460	60	5.1
1/4	1790	2.5	7.3	460	60	5.8
1/2	1781	5.0	14.7	460	60	7.5
3/4	1771	7.5	22.3	460	60	9.8
Full Load	1762	10.0	29.8	460	60	12.3
O/L	1728	20.0	60.7	460	60	24.4

Blower Data	Volts	Ph/Hz	FL Amps	LR Amps	Frame	CFM

Remarks: Calculated Data
Vector PWM Inverter Duty

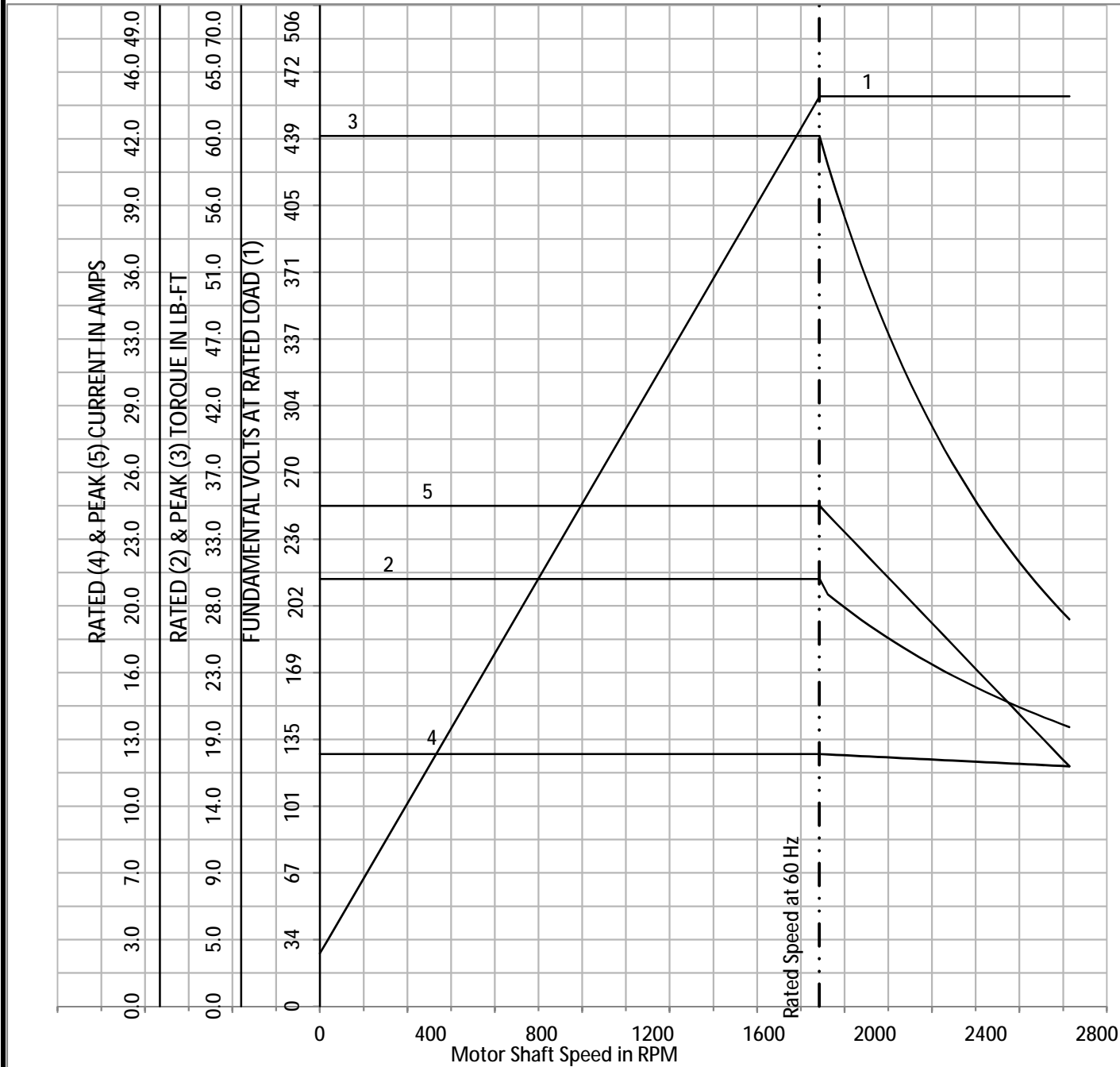


DR BY JJ
CK BY
APP BY JJ
DATE 6/17/2015

A-C MOTOR PERFORMANCE CURVES
07WGX776
ISSUE DATE 6/17/2015

Catalog	0	VOLTS	230/460	ENCLOSURE	TEFC	WYE CONN EQ CKT OHMS PER PHASE (BASE RATING, 20C)			
FRAME	215TC	AMPS	25/12.5	MAX SAFE RPM	2700	R1	0.507	X1	1.97
HP	10	DUTY	Cont	In (AMPS)	5.12	R2	0.342	X2	1.58
BASE SPEED	1760	S.F.	1.00	P.F. @NL/FL	4.4/82			XM	48.3000
PHASE/HZ	3/60	AMB ⁰ C/INS ¹	40/F	WK ² (lb-ft ²)	1.18				

Vector PWM Inverter Duty
Variable Speed AC Motor Curves



Calculated Data

Data Valid For Nameplate Speed Range only



DR BY JJ
CK BY
APP BY JJ
DATE 6/17/2015

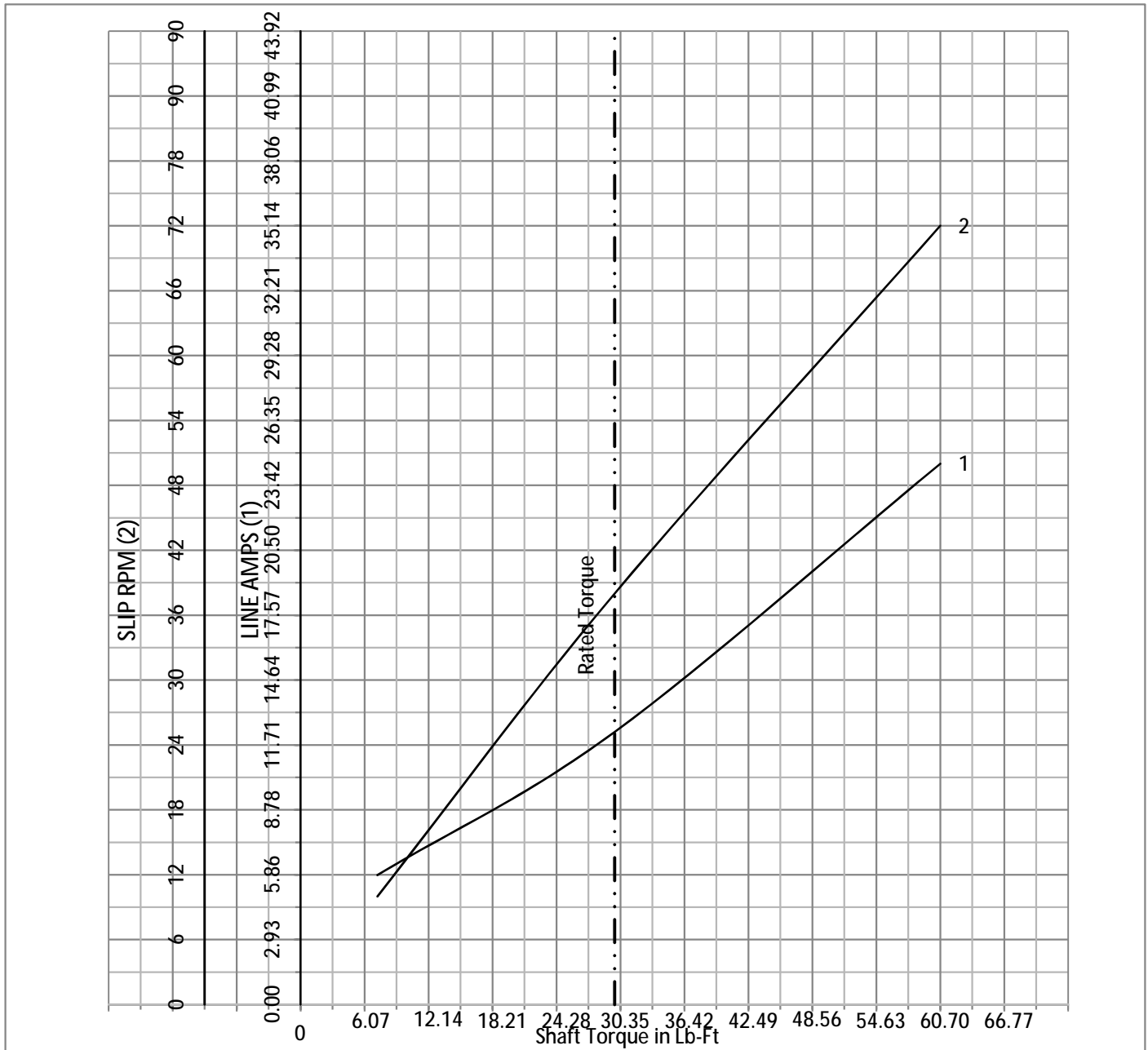
A-C MOTOR
PERFORMANCE
CURVES

07WGX776

ISSUE DATE 6/17/2015

Catalog	0	NP VOLTS	230/460	ENCLOSURE	TEFC	WYE CONN EQ CKT OHMS PER PHASE (BASE RATING, 20C)			
FRAME	215TC	NP AMPS	25/12.5	MAX SAFE RPM	2700	R1	0.507	X1	1.97
HP	10	DUTY	Cont	NL AMPS	5.12	R2	0.342	X2	1.58
BASE SPEED	1760	S.F.	1.00	P.F. @NL/FL	4.4/82			XM	48.3
PHASE/HZ	3/60	AMB ⁰ C/INSUL	40/F	WK ² (lb-ft ²)	1.18				

Vector PWM Inverter Duty
Variable Speed AC Motor Curves



Calculated Data

Data Valid For Nameplate Speed Range only

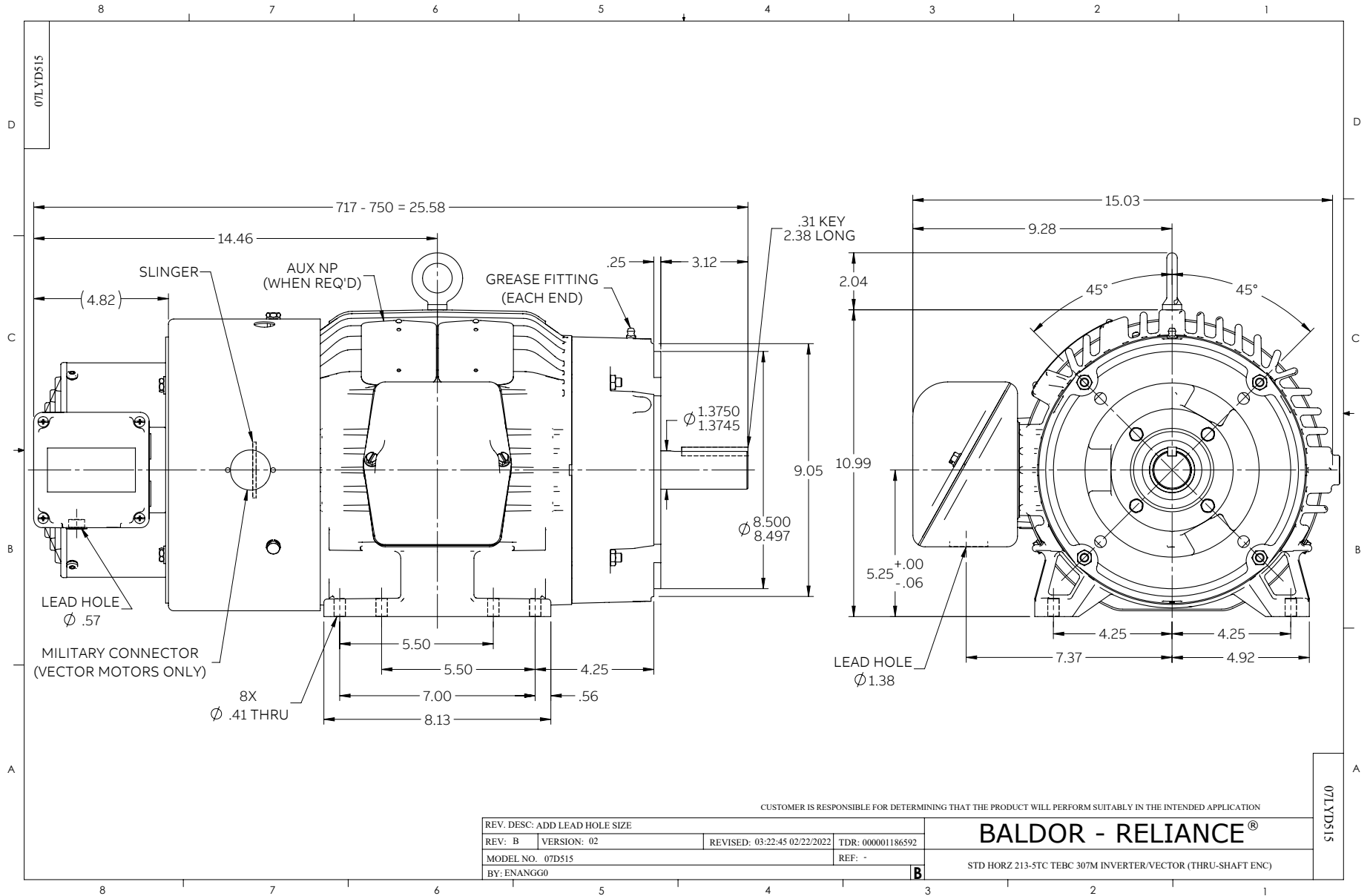


DR BY JJ
 CK BY
 APP BY JJ
 DATE 6/17/2015

A-C MOTOR
 PERFORMANCE
 CURVES

07WGX776

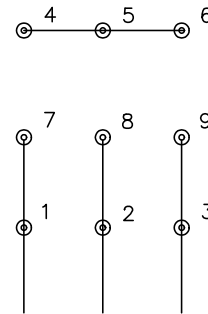
ISSUE DATE 6/17/2015



CD0005



LOW VOLTAGE
(2Y)



LINE

HIGH VOLTAGE
(1Y)



LINE

NOTES:

1. INTERCHANGE ANY TWO LINE LEADS TO REVERSE ROTATION.
2. OPTIONAL THERMOSTATS ARE PROVIDED WHEN SPECIFIED.
3. ACTUAL NUMBER OF INTERNAL PARALLEL CIRCUITS MAY BE A MULTIPLE OF THOSE SHOWN ABOVE.
4. LEAD COLORS ARE OPTIONAL. LEADS MUST ALWAYS BE NUMBERED AS SHOWN.

CD0005

REV. DESC: REVISE TO SHOW OPTIONAL COLORS

REV. LTR: E BY: JLP REVISED: 01/19/99 10:15 TDR: 0171435

500000

FILE: AAA00005140

MDL: -

MTL: -

BALDOR ELECTRIC Co.

3PH, DV, 9 LEADS