

ABB BALDOR RELIANCE III

Customer information packet

IDM3661T

3HP, 1755RPM, 3PH, 60HZ, 184TC, 0632M, TEBC, F1

Class - None

Division - Not Applicable

Specifications

Enclosure	TEBC
Frame	184TC
Frame Material	Iron
Frequency	60.00 Hz
Haz Area Class and Group	None
Haz Area Division	Not Applicable
Motor Letter Type	Three Phase
Output @ Frequency	3.000 HP @ 60 HZ
Phase	3
Synchronous Speed @ Frequency	1800 RPM @ 60 HZ
Voltage @ Frequency	230.0 V @ 60 HZ 460.0 V @ 60 HZ
Agency Approvals	UR CSA
Ambient Temperature	40 °C
Auxiliary Box	NO AUXILLARY BOX
Auxiliary Box Lead Termination	None
Base Indicator	Rigid
Bearing Grease Type	Polyrex EM (-20F +300F)
Blower	115V 1-Phase EXT
Current @ Voltage	4.100 A @ 460.0 V 8.200 A @ 230.0 V
Design Code	B
Drip Cover	No Drip Cover
Duty Rating	CONT
Efficiency @ 100% Load	89.5 %
Electrically Isolated Bearing	Not Electrically Isolated
Feedback Device	NO FEEDBACK
Front Face Code	Encoder/Feedback Device
Front Shaft Indicator	None
Heater Indicator	No Heater
High Voltage Full Load Amps	4.1 a

Part Detail

Revision	H
Type	AC
Mech. spec.	06F552
Base	
Status	PRD/A
Elec. spec.	06WGX181
Layout	06LYF552
Eff. date	09-30-2025
CD Diagram	CD0005
Poles	04
Leads	9#16
Proprietary	False
Created date	10-04-2011

Insulation Class	H
Inverter Code	Inverter Duty
KVA Code	J
Lifting Lugs	Standard Lifting Lugs
Locked Bearing Indicator	Locked Bearing
Max Speed	6000 rpm
Motor Lead Exit	Ko Box
Motor Lead Quantity/Wire Size	9 @ 16 AWG
Motor Lead Termination	Flying Leads
Motor Standards	NEMA
Motor Type	0632M
Mounting Arrangement	F1
Number of Poles	4
Overall Length	21.71 IN
Power Factor	77
Product Family	General Purpose
Pulley End Bearing Type	Ball
Pulley Face Code	C-Face
Pulley Shaft Indicator	Standard
Rodent Screen	None
Service Factor	1.00
Shaft Diameter	1.125 IN
Shaft Extension Location	Pulley End
Shaft Ground Indicator	No Shaft Grounding
Shaft Rotation	Reversible: Connected Standard
Shaft Slinger Indicator	No Slinger
Speed	1755 rpm
Speed Code	Single Speed
Starting Method	Direct on line
Thermal Device - Bearing	None
Thermal Device - Winding	Normally Closed Thermostat
Vibration Sensor Indicator	No Vibration Sensor
Winding Thermal 1	None
Winding Thermal 2	None

Nameplate

NP4009L					
CAT.NO.	IDM3661T				
SPEC.	06F552X181G1				
FRAME	184TC	H.P.	3 TE		
VOLTS	230/460				
MAG. CUR.	4.2/2.1	F.L. AMPS	8.2/4.1		
R.P.M.	1755	R.P.M. MAX	6000		
HZ.	60	PH.	3	CLASS	H
SER.F.	1.00	DES.	B	SL HZ	1.5
NEMA NOM. EFF.	89.5	WK2	0.3		
BLOWER	V	PH	HZ	AMPS	
RATING	40C AMB-CONT				
DE	6206	ODE	6205		
CC	010A	SN			
	1000:1 CT/VT				



AC Induction Motor Performance Data
 Record # 36483
 Typical performance - not guaranteed values

Winding: 06WGX181	Type: 0632M	Enclosure: TEBC
--------------------------	--------------------	------------------------

Nameplate Data				General Characteristics at 460 V, 60 Hz: High Volt Connection	
Rated Output (HP)	3			Full Load Torque	9.06 LB-FT
Volts	230/460			Start Configuration	DOL
Full Load Amps	8.2/4.1			Break Down Torque	33.1 LB-FT
R.P.M.	1755			Pull-Up Torque	18.2 LB-FT
Hz	60	Phase	3	Locked-rotor Torque	20.4 LB-FT
NEMA Design Code	B	KVA Code	J	Starting Current	29.8 Amps
Service Factor	1			No-load Current	2.14 Amps
NEMA Nom. Eff.	89.5	P.F.	77	Line-line Res. @ 25°C.	3.94 Ohms
Rating - Duty	40C AMB-CONT			Temp. Rise @ Rated Load	35°C
S.F. Amps				Temp. Rise @ S.F. Load	

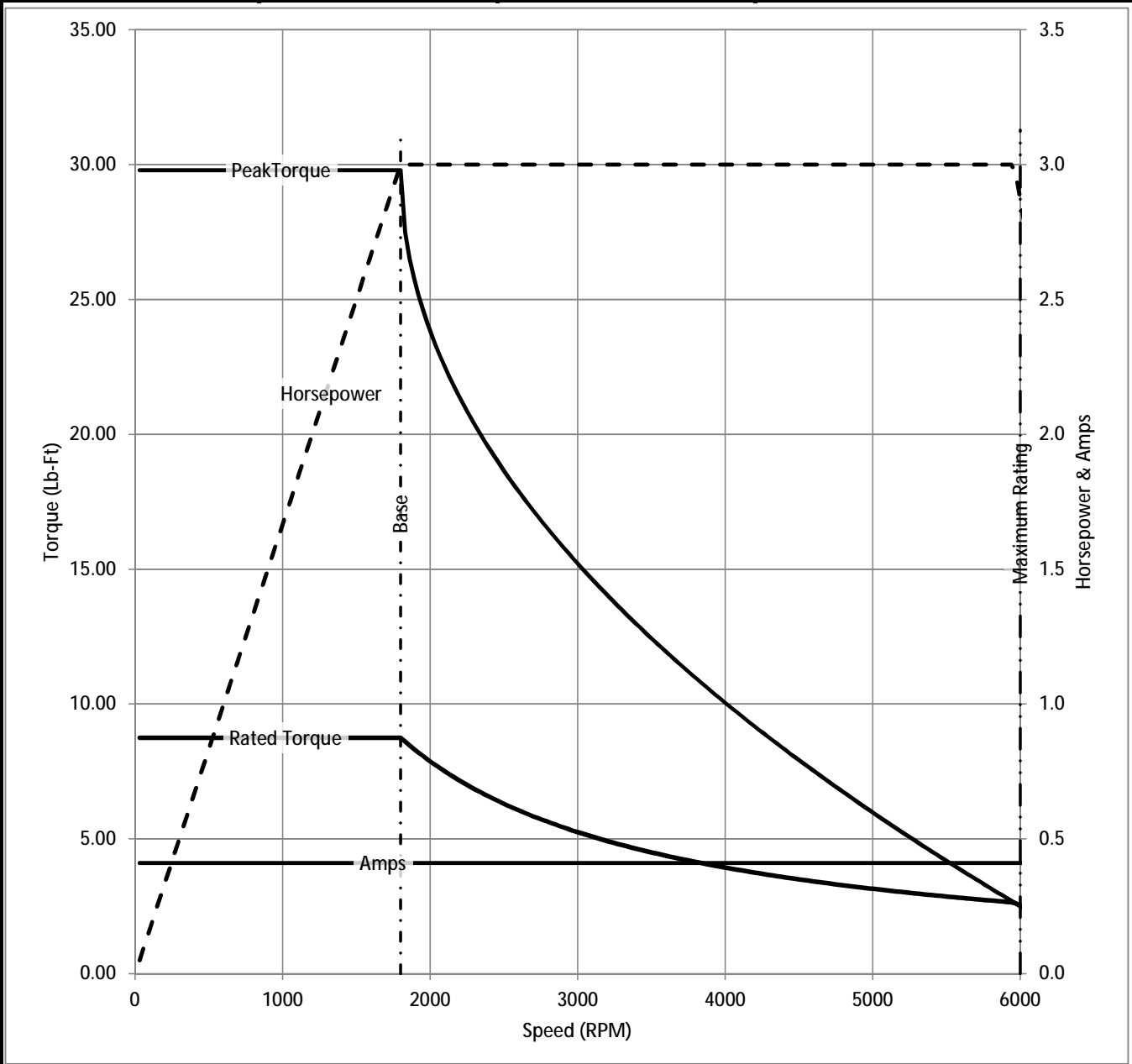
Load Characteristics at 460 Volts, 60 Hz, 3 HP

% of Rated Load	25	50	75	100	125	150	S.F.
Power Factor	38	58	70	77	81	83	
Efficiency	83.2	88.3	89.8	89.7	89.1	87.7	
Speed	1790	1779	1769	1757	1744	1730	
Line Amperes	2.34	2.79	3.39	4.1	4.91	5.86	

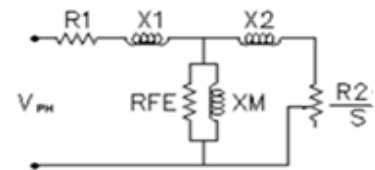
Baldor Electric Company Fort Smith, Arkansas



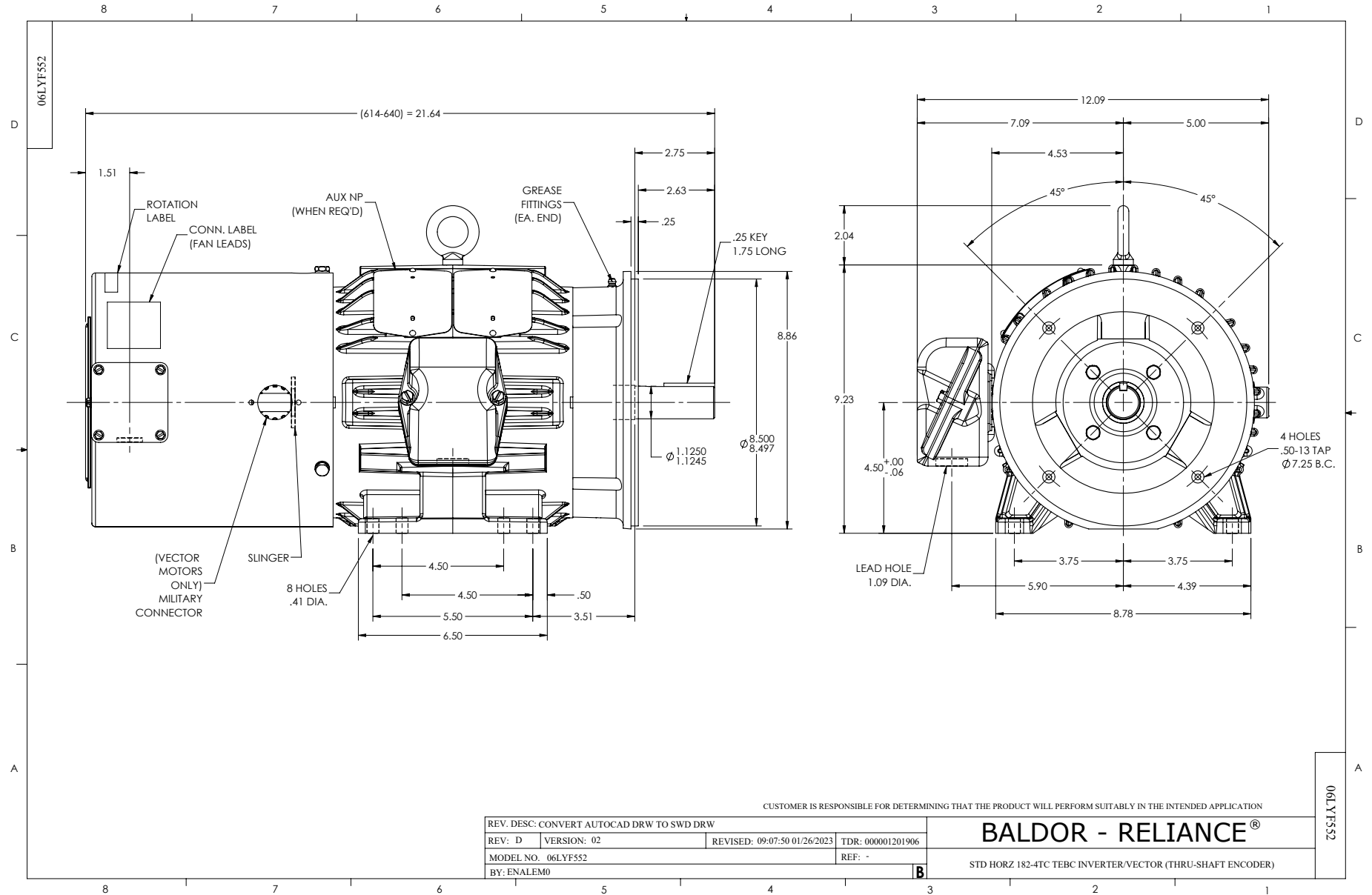
Catalog	IDM3661T	NP VOLTS	230/460	ENCLOSURE	TEBC	WYE CONN EQ CKT OHMS PER PHASE (BASE RATING, 20C)			
FRAME	184TC	NP AMPS	8.2/4.1	Base Volts	460	R1	1.930	X1	5.490
HP	3 HP	DUTY	Cont	Base AMPS	4.1	R2	1.370	X2	4.581
BASE SPEED	1800	MAX SAFE RPM	6000	Slip Hz	1.43			XM	119.333
PHASE/HZ	3/60	AMB ⁰ C/INSUL	40/H	WK ² (lb-ft ²)	0.298				



Remarks: Calculated Data



<p>BALDOR A MEMBER OF THE ABB GROUP</p>	DR BY	<u>ENR</u>	<p>06F552X181G1</p> <p>A-C MOTOR PERFORMANCE CURVES</p>
	CK BY		
	APP BY	<u>ENR</u>	
	DATE	<u>2/27/2013</u>	
		ISSUE DATE	<u>2/27/2013</u>



CD0005



LOW VOLTAGE
(2Y)



LINE

HIGH VOLTAGE
(1Y)



LINE

NOTES:

1. INTERCHANGE ANY TWO LINE LEADS TO REVERSE ROTATION.
2. OPTIONAL THERMOSTATS ARE PROVIDED WHEN SPECIFIED.
3. ACTUAL NUMBER OF INTERNAL PARALLEL CIRCUITS MAY BE A MULTIPLE OF THOSE SHOWN ABOVE.
4. LEAD COLORS ARE OPTIONAL. LEADS MUST ALWAYS BE NUMBERED AS SHOWN.

CD0005

REV. DESC: REVISE TO SHOW OPTIONAL COLORS

REV. LTR: E BY: JLP REVISED: 01/19/99 10:15 TDR: 0171435

500000

FILE: AAA00005140

MDL: -

MTL: -

BALDOR ELECTRIC Co.

3PH, DV, 9 LEADS