

ABB BALDOR RELIANCE III

Customer information packet

IDM2334T-5

60M 4P TEBC HOR 256TC TSTAT INV DUTY

Class - None

Division - Not Applicable

Specifications

Enclosure	TEBC
Frame	256TC
Frame Material	Iron
Frequency	60.00 Hz
Haz Area Class and Group	None
Haz Area Division	Not Applicable
Motor Letter Type	Three Phase
Output @ Frequency	20.000 HP @ 60 HZ
Phase	3
Synchronous Speed @ Frequency	1800 RPM @ 60 HZ
Voltage @ Frequency	575.0 V @ 60 HZ
Agency Approvals	UR CSA
Ambient Temperature	40 °C
Auxiliary Box	NO AUXILLARY BOX
Auxiliary Box Lead Termination	None
Base Indicator	Rigid
Bearing Grease Type	Polyrex EM (-20F +300F)
Blower	BLOWER
Current @ Voltage	19.200 A @ 575.0 V
Design Code	A
Drip Cover	No Drip Cover
Duty Rating	CONT
Efficiency @ 100% Load	93.0 %
Electrically Isolated Bearing	Not Electrically Isolated
Feedback Device	NO FEEDBACK
Front Shaft Indicator	None
Heater Indicator	No Heater
High Voltage Full Load Amps	19.2 a
Insulation Class	H
Inverter Code	Inverter Duty
KVA Code	J

Part Detail

Revision	H
Type	AC
Mech. spec.	09T110
Base	
Status	PRD/A
Elec. spec.	09WGT507
Layout	09LYT110
Eff. date	08-28-2025
CD Diagram	CD0006
Poles	04
Leads	3#12
Proprietary	False
Created date	03-19-2019

Lifting Lugs	Standard Lifting Lugs
Locked Bearing Indicator	Locked Bearing
Max Speed	2700 rpm
Motor Lead Quantity/Wire Size	3 @ 12 AWG
Motor Lead Termination	Flying Leads
Motor Standards	NEMA
Motor Type	0960M
Mounting Arrangement	F1
Number of Poles	4
Overall Length	29.41 IN
Power Factor	83
Product Family	General Purpose
Pulley End Bearing Type	Ball
Pulley Face Code	C-Face
Pulley Shaft Indicator	Standard
Rodent Screen	None
RoHS Status	ROHS COMPLIANT
Service Factor	1.00
Shaft Diameter	1.625 IN
Shaft Ground Indicator	No Shaft Grounding
Shaft Rotation	Reversible
Shaft Slinger Indicator	Shaft Slinger
Speed	1770 rpm
Speed Code	Single Speed
Starting Method	Direct on line
Thermal Device - Bearing	None
Thermal Device - Winding	Normally Closed Thermostat
Vibration Sensor Indicator	No Vibration Sensor
Winding Thermal 1	None
Winding Thermal 2	None

Nameplate

NP1163L	
CAT NO	IDM2334T-5
SPEC.	09T110T507G1
FRAME	256TC HP 20 TE
VOLTS	575
MAG CUR	8.3 FLA 19.2
RPM	1770 RPM MAX 2700
HZ	60 PH 3 CLASS H
SER.F.	1.00 DES A SL HZ 1
NEMA-NOM-EFF	93 WK2 2.62
BLWR V	PH HZ A
RATING	40C AMB-CONT
DE BRG	6309 ODE BRG 6208
CC	010A SN 1000:1 CT, 1000:1 VT

MAX SAFE RPM 2700
 Base Volt 575
 NL AMPS 8.28
 Slips(HZ) 0.93
 WK2 (lb-ft²) 2.650

WYE CONN. EQ. CKT. OHMS PER PHASE (BASE RATING, 20C)
 R1 0.264 X1 1.370
 R2 0.249 X2 1.820
 XM 47.200

HP 20 HP
 BASE SPEED 1772
 PHASE/HZ 3/60

Rated Full Load Data

	RPM	HP	Torque	Volts	Freq-Hz	Amps
Base Speed	1772	20.0	59.3	575	60	19.2
Max Speed	2657	20.0	39.6	575	90	18.5
Min Speed	0	0.0	59.3	22.51	0.93	19.2

Load Performance at Base Speed

	RPM	HP	Torque	Volts	Freq-Hz	Amps
No Load	1799	0.0	0.0	575	60	8.3
1/4	1793	5.0	14.7	575	60	9.4
1/2	1786	10.0	29.5	575	60	12.0
3/4	1779	15.0	44.3	575	60	15.3
Full Load	1772	20.0	59.3	575	60	19.2
O/L	1741	40.1	121.0	575	60	39.1

Blower Data	Volts	Ph/Hz	FL Amps	LR Amps	Frame	CFM

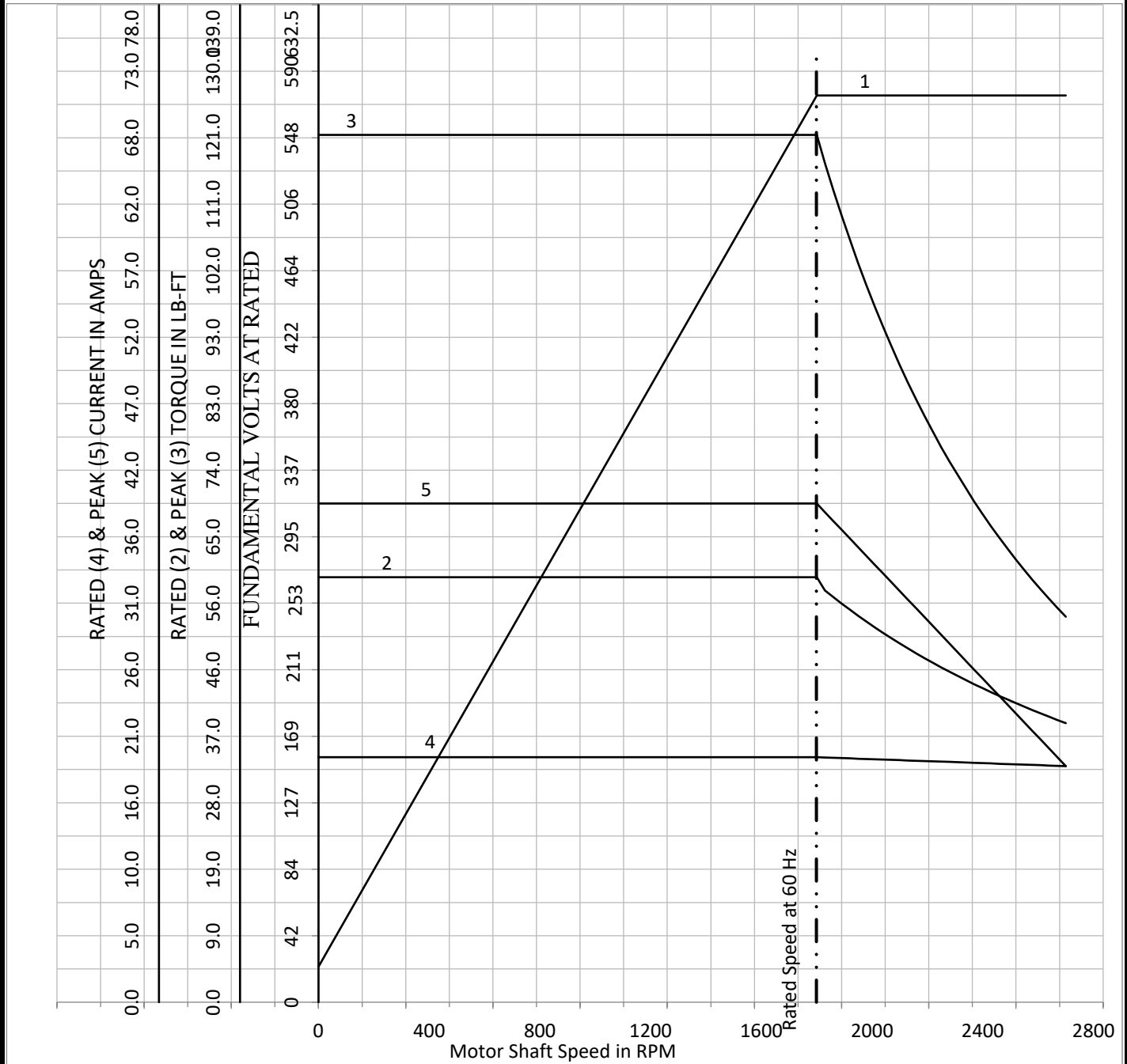
Remarks: Calculated Data
 Vector PWM Inverter Duty

MAX SAFE RPM	2700
Base Volt	575
NL AMPS	8.28
Slips(HZ)	0.93
WK2 (lb-ft ²)	2.650

WYE CONN EQ CKT OHMS PER PHASE (BASE RATING, 20C)			
R1	0.264	X1	1.370
R2	0.249	X2	1.820
		XM	47.200

HP 20 HP
 BASE SPEED 1772
 PHASE/HZ 3/60

Vector PWM Inverter Duty
 Variable Speed AC Motor Curves



Calculated Data

Data Valid For Nameplate Speed Range only



DR BY USBRRAN1
 CK BY
 APP BY USBRRAN1
 DATE 11/19/2020

**A-C MOTOR
 PERFORMANCE
 CURVES**

09WGT507

Record: 85523



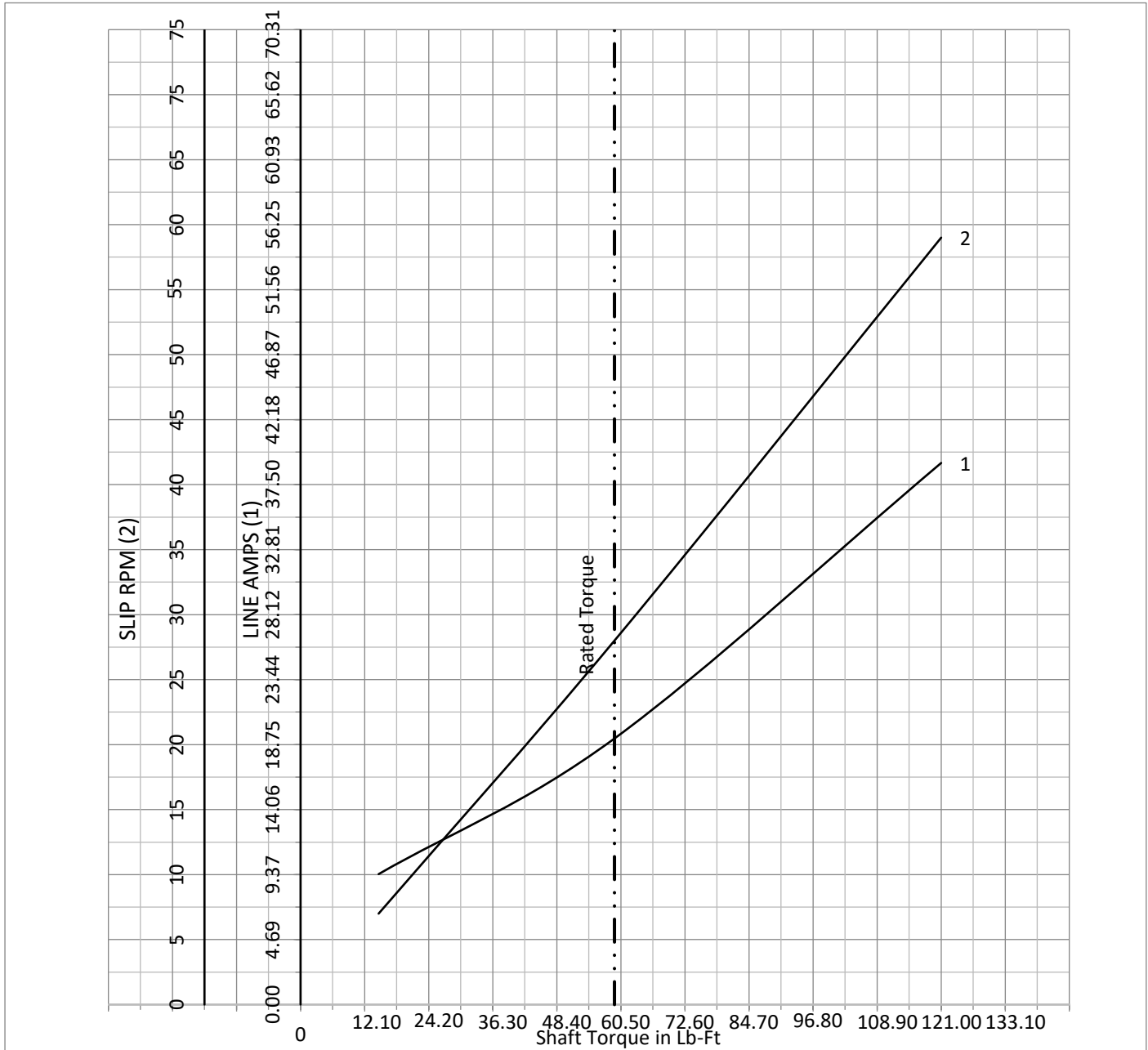
CUSTOMER INFORMATION PACKET

HP 20 HP
BASE SPEED 1772
PHASE/HZ 3/60

MAX SAFE RPM 2700
Base Volt 575
NL AMPS 8.28
Slips(HZ) 0.93
WK2 (lb-ft²) 2.650

WYE CONN EQ CKT OHMS PER PHASE (BASE RATING, 20C)
R1 0.264 X1 1.370
R2 0.249 X2 1.820
XM 47.200

Vector PWM Inverter Duty
Variable Speed AC Motor Curves



Calculated Data

Data Valid For Nameplate Speed Range only

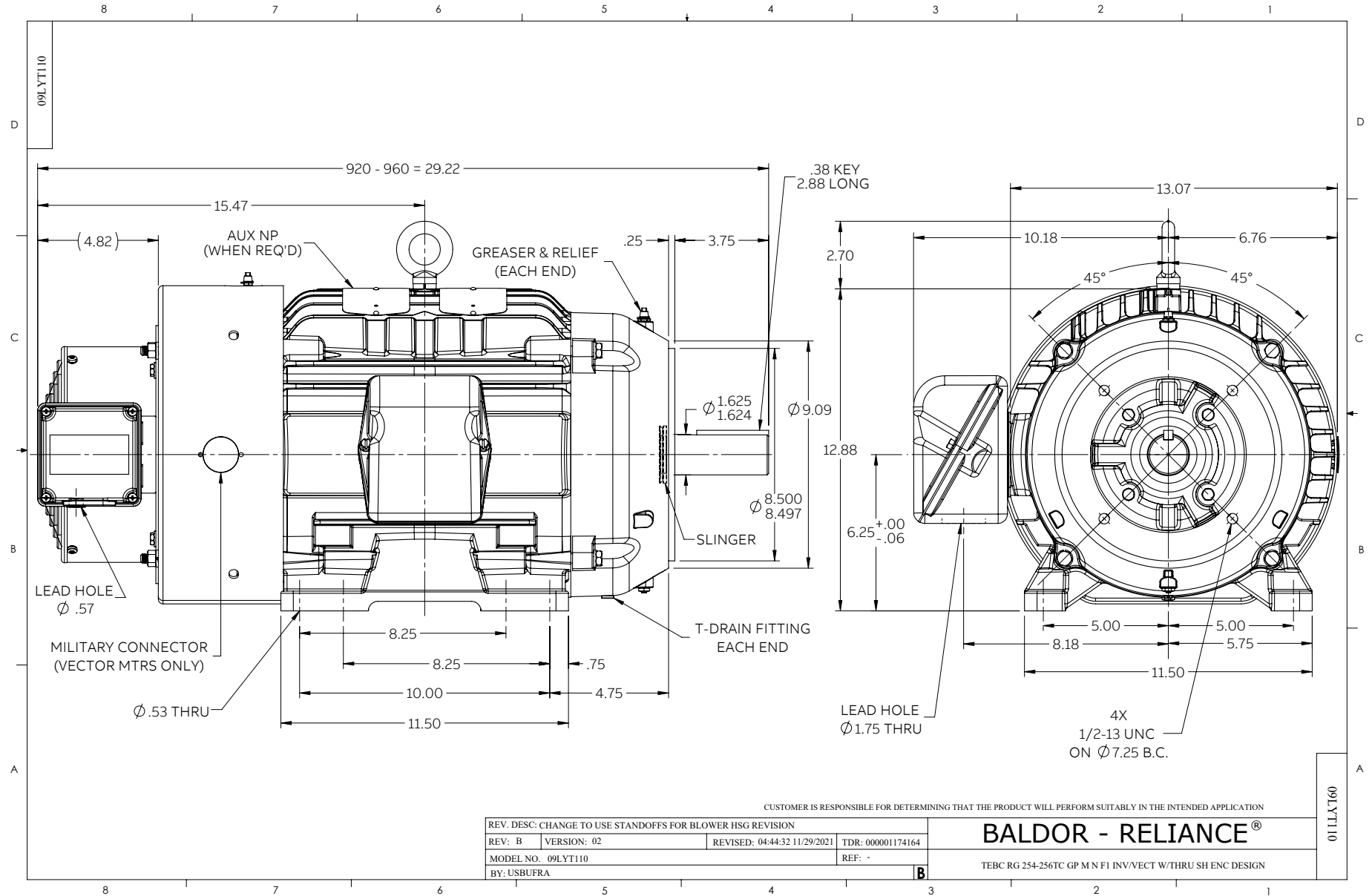


DR BY USBRRAN1
CK BY
APP BY USBRRAN1
DATE 11/19/2020

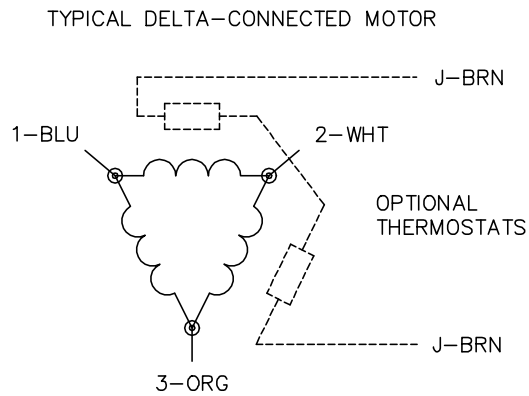
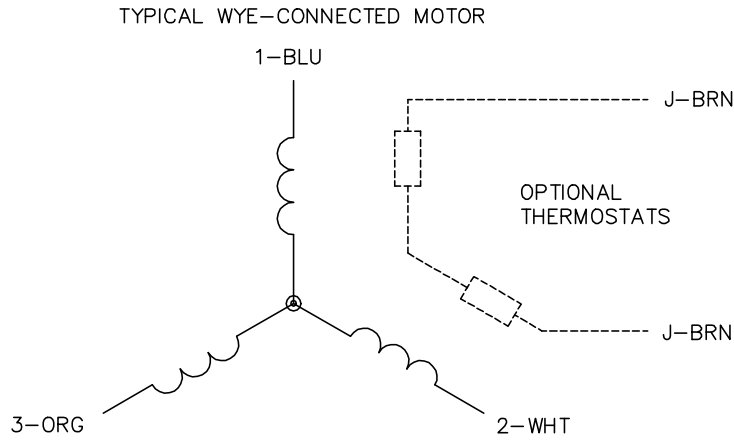
A-C MOTOR
PERFORMANCE
CURVES

09WGT507

Record: 85523



CD0006



NOTES:

1. THREE LEAD MOTOR MAY BE EITHER WYE CONNECTED OR DELTA CONNECTED.
2. INTERCHANGE ANY TWO LINE LEADS TO REVERSE ROTATION.
3. OPTIONAL THERMOSTATS ARE PROVIDED WHEN SPECIFIED.
4. ACTUAL NUMBER OF INTERNAL PARALLEL CIRCUITS MAY VARY.
5. LEAD COLORS ARE OPTIONAL. LEADS MUST BE NUMBERED AS SHOWN.

CD0006

REV. DESC: ADD CLASS CONN00000007		
REV. LTR: E	VERSION: 01	TDR: 000001099922
FILE: \AAA\00005\141	REVISED: 10:24:49 02/19/2019	BY: ENBRIRO
MTL: -		© □

BALDOR - RELIANCE®

3PH, SV, 3 LEADS, WYE OR DELTA CONNECTED

SH 1 of 1