



---

# Customer information packet

## IDM2333T

15HP, 1765RPM, 3PH, 60HZ, 256TC, 0944M, TEBC, F

Class - None

Division - Not Applicable

## Specifications

Enclosure	TEBC
Frame	256TC
Frame Material	Iron
Frequency	60.00 Hz
Haz Area Class and Group	None
Haz Area Division	Not Applicable
Motor Letter Type	Three Phase
Output @ Frequency	15.000 HP @ 60 HZ
Phase	3
Synchronous Speed @ Frequency	1800 RPM @ 60 HZ
Voltage @ Frequency	230.0 V @ 60 HZ 460.0 V @ 60 HZ
Agency Approvals	CSA UR
Ambient Temperature	40 °C
Auxiliary Box	NO AUXILLARY BOX
Auxiliary Box Lead Termination	None
Base Indicator	Rigid
Bearing Grease Type	Polyrex EM (-20F +300F)
Blower	BLOWER
Current @ Voltage	18.100 A @ 460.0 V 36.200 A @ 230.0 V 38.000 A @ 208.0 V
Design Code	A
Drip Cover	No Drip Cover
Duty Rating	CONT
Efficiency @ 100% Load	92.4 %
Electrically Isolated Bearing	Not Electrically Isolated
Feedback Device	NO FEEDBACK
Front Shaft Indicator	None
Heater Indicator	No Heater
High Voltage Full Load Amps	18.1 a

## Part detail

Revision	G
Type	AC
Mech. spec.	09T110
Base	
Status	PRD/A
Elec. spec.	09WGT597
Layout	09LYT110
Eff. date	08-28-2025
CD Diagram	CD0005
Poles	04
Leads	9#12
Proprietary	False
Created date	02-02-2021

Insulation Class	H
Inverter Code	Inverter Duty
KVA Code	H
Lifting Lugs	Standard Lifting Lugs
Locked Bearing Indicator	Locked Bearing
Max Speed	5000 rpm
Motor Lead Quantity/Wire Size	9 @ 12 AWG
Motor Lead Termination	Flying Leads
Motor Standards	NEMA
Motor Type	0944M
Mounting Arrangement	F1
Number of Poles	4
Overall Length	29.41 IN
Power Factor	83
Product Family	General Purpose
Pulley End Bearing Type	Ball
Pulley Face Code	C-Face
Pulley Shaft Indicator	Standard
Rodent Screen	None
RoHS Status	ROHS NON-COMPLIANT
Service Factor	1.00
Shaft Diameter	1.625 IN
Shaft Ground Indicator	No Shaft Grounding
Shaft Rotation	Reversible
Shaft Slinger Indicator	Shaft Slinger
Speed	1765 rpm
Speed Code	Single Speed
Starting Method	Direct on line
Thermal Device - Bearing	None
Thermal Device - Winding	Normally Closed Thermostat
Vibration Sensor Indicator	No Vibration Sensor
Winding Thermal 1	None
Winding Thermal 2	None

**Nameplate**

<b>NP1163L</b>	
<b>CAT NO</b>	IDM2333T
<b>SPEC.</b>	09T110T597G1
<b>FRAME</b>	256TC <b>HP</b> 15 TE
<b>VOLTS</b>	230/460
<b>MAG CUR</b>	14.6/7.3 <b>FLA</b> 36.2/18.1
<b>RPM</b>	1765 <b>RPM MAX</b> 5000
<b>HZ</b>	60 <b>PH</b> 3 <b>CLASS</b> H
<b>SER.F.</b>	1.00 <b>DES</b> A <b>SL HZ</b> 1.2
<b>NEMA-NOM-EFF</b>	92.4 <b>WK2</b> 1.93
<b>BLWR V</b>	PH      HZ      A
<b>RATING</b>	40C AMB-CONT
<b>DE BRG</b>	6309 <b>ODE BRG</b> 6208
<b>CC</b>	010A <b>SN</b> 1000:1 CT, 1000:1 VT

NP VOLTS	230/460	MAX SAFE RPM	2700	WYE CONN. EQ. CKT. OHMS PER PHASE (BASE RATING, 200°)			
NP AMPS	36.2/18.1	Base Volt	460	R1	0.296	X1	1.130
HP	15HP	NL AMPS	7.6	R2	0.238	X2	1.330
BASE SPEED	1765	Slips	1.17	XM			33.900
PHASE/HZ	3/60	WK <sup>2</sup> (lb-ft <sup>2</sup> )	1.92				

**Rated Full Load Data**


	RPM	HP	Torque	Volts	Freq-Hz	Amps
Base Speed	1765	15.0	44.5	460	60	18.1
Max Speed	2646	15.0	29.7	460	90	17.2
Min Speed	0	0.0	44.5	23.08	1.17	18.1

**Load Performance at Base Speed**

	RPM	HP	Torque	Volts	Freq-Hz	Amps
No Load	1799	0.0	0.0	460	60	7.6
1/4	1791	3.7	10.8	460	60	8.6
1/2	1783	7.5	22.1	460	60	11.0
3/4	1774	11.3	33.3	460	60	14.5
Full Load	1765	15.0	44.5	460	60	18.1
O/L	1730	29.9	90.8	460	60	36.1

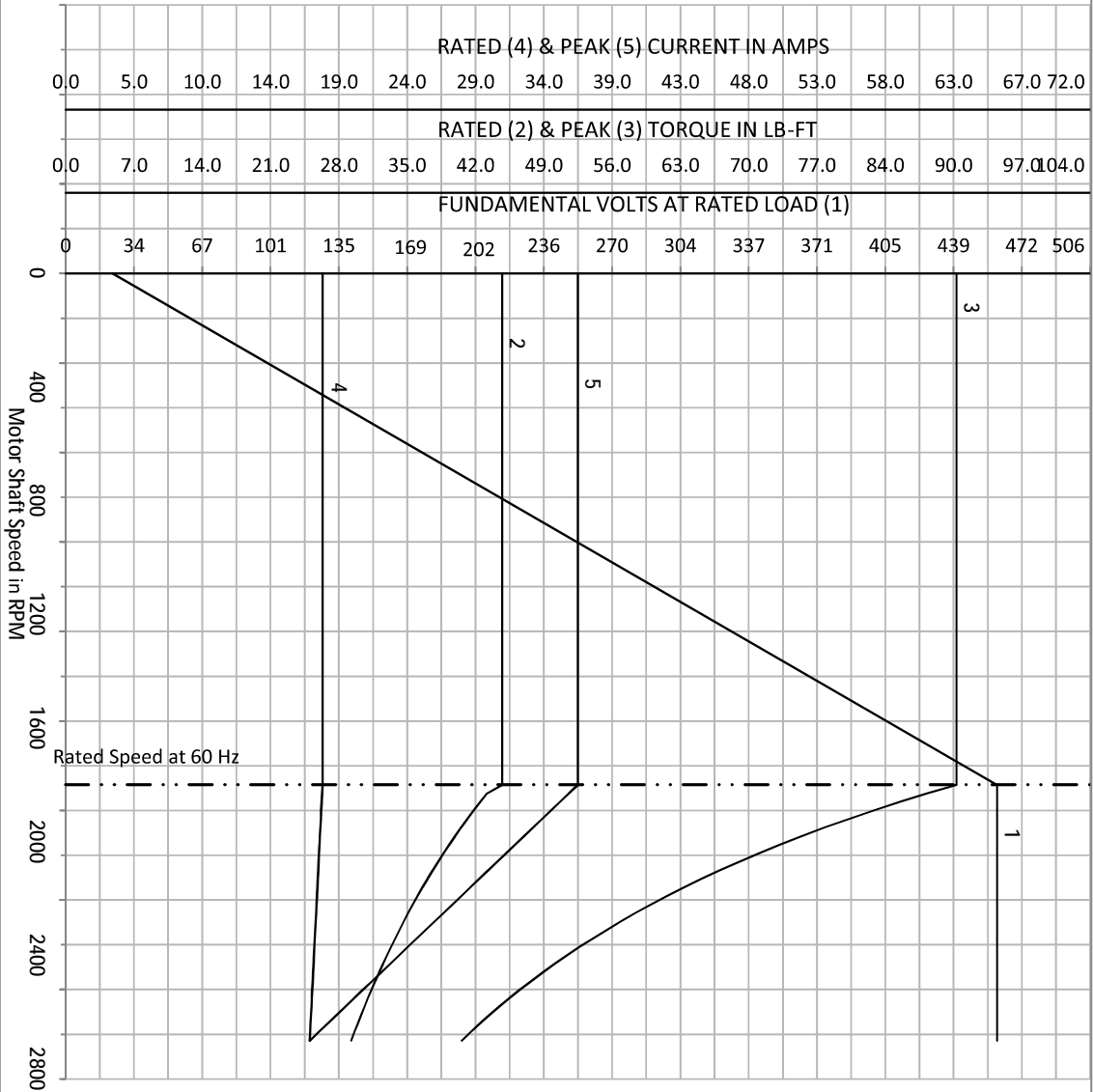
Blower Data	Volts	Ph/Hz	FL Amps	LR Amps	Frame	CFM

Remarks: Calculated Data  
Vector PWM Inverter Duty

 A MEMBER OF THE ABB GROUP	DR BY	BR	A-C MOTOR PERFORMANCE CURVES
	CK BY	BR	
	APP BY		
	DATE	10/31/2024	
			09WGT1597

NP VOLTS	230/460	MAX SAFE RPM	2700	WYE CONNECTION CT OHMS PER PHASE (BASE RATING, 200)			
NP AMPS	36.2/18.1	Base Volt	460	R1	0.296	X1	1.13
HP	15HP	NL AMPS	7.56	R2	0.238	X2	1.33
BASE SPEED	1765	Slips	1.166666667	XM			33.9000
PHASE/HZ	3/60	WK2 (lb-ft2)	1.92				

Vector PWM Inverter Duty  
Variable Speed AC Motor Curves



Calculated Data  
Data Valid For Nameplate Speed Range only

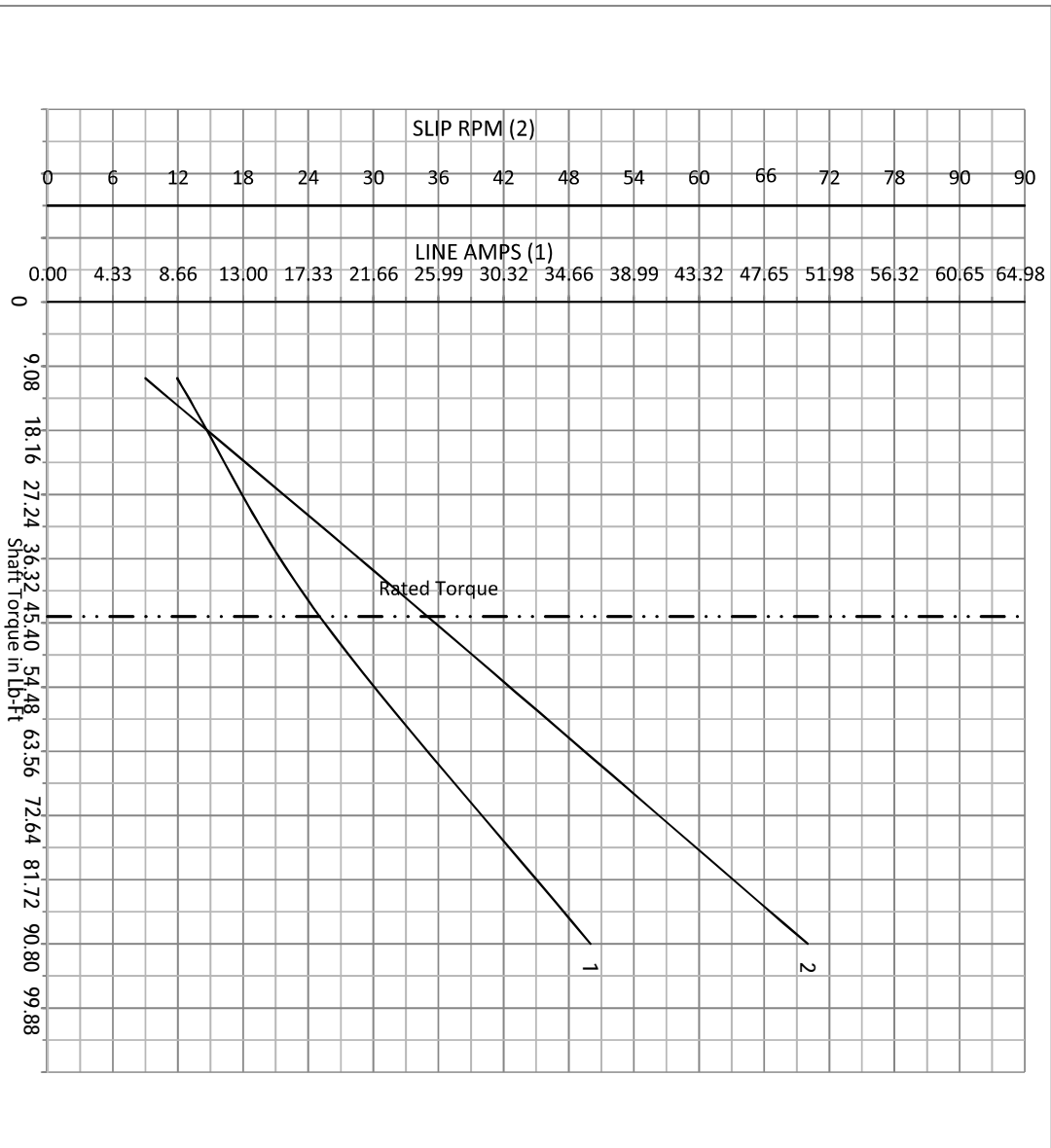


DR BY BR  
CK BY BR  
APP BY BR  
DATE 10/31/2024

A-C MOTOR **09WGT1597**  
PERFORMANCE CURVES

NP VOLTS	230/460	MAX SAFE RPM	2700	WYE CONN. EQ. CT. OHMS PER PHASE (BASE RATING, 200)			
NP AMPS	36.2/18.1	Base Volt	460	R1	0.296	X1	1.13
HP	15HP	NL AMPS	7.56	R2	0.238	X2	1.33
BASE SPEED	1765	Slips	1.16666667			XM	33.9
PHASE/HZ	3/60	WK2 (lb-ft <sup>2</sup> )	1.92				

Vector PWM Inverter Duty  
Variable Speed AC Motor Curves



Calculated Data

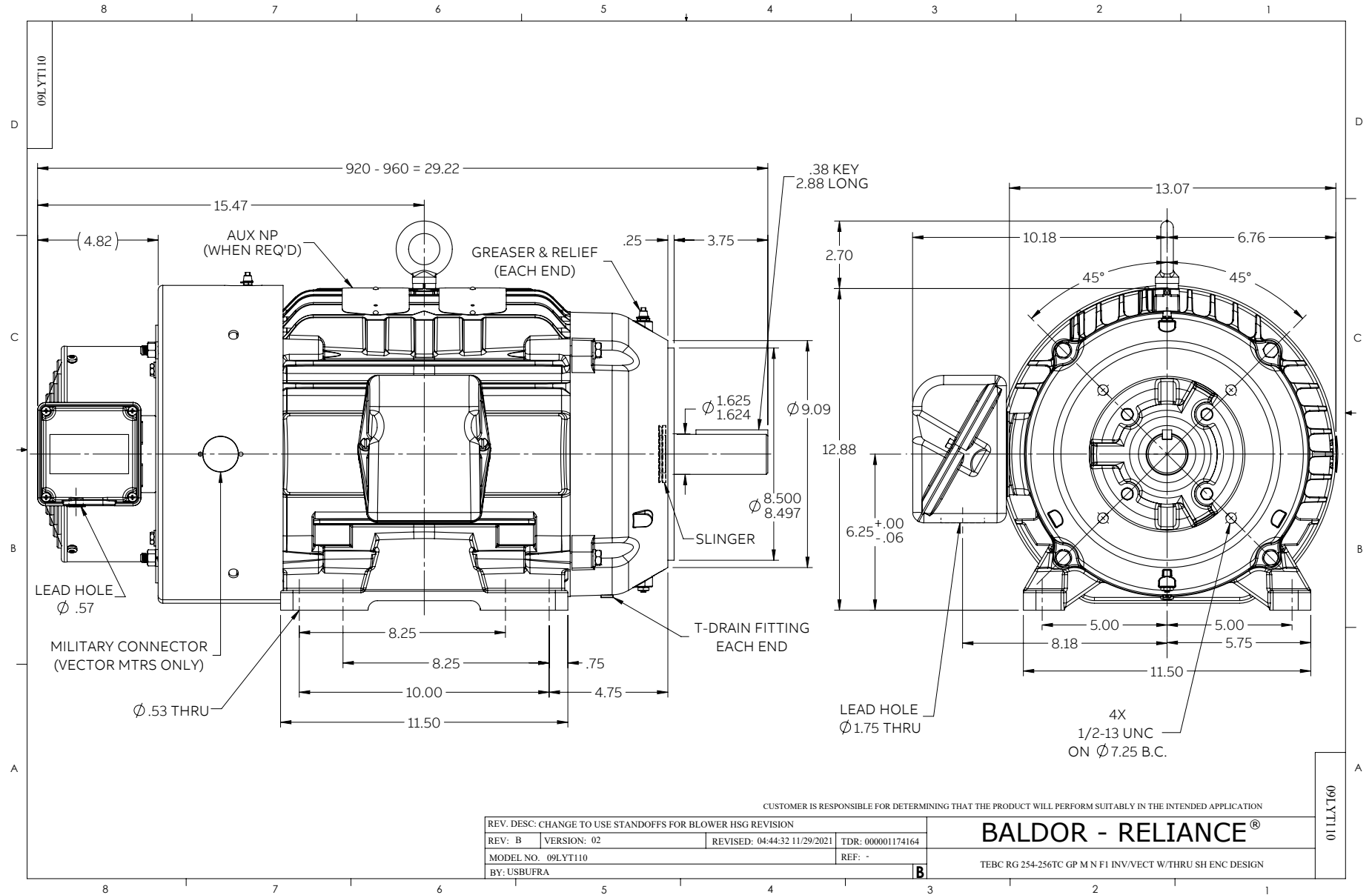
Data Valid For Nameplate Speed Range only



A MEMBER OF THE ABB GROUP

DR BY BR  
CK BY BR  
APP BY BR  
DATE 10/31/2024

A-C MOTOR PERFORMANCE CURVES 09WGT597



CD0005



LOW VOLTAGE (2Y)



LINE

HIGH VOLTAGE (1Y)



LINE

NOTES:

1. INTERCHANGE ANY TWO LINE LEADS TO REVERSE ROTATION.
2. OPTIONAL THERMOSTATS ARE PROVIDED WHEN SPECIFIED.
3. ACTUAL NUMBER OF INTERNAL PARALLEL CIRCUITS MAY BE A MULTIPLE OF THOSE SHOWN ABOVE.
4. LEAD COLORS ARE OPTIONAL. LEADS MUST ALWAYS BE NUMBERED AS SHOWN.

CD0005

REV. DESC: REVISE TO SHOW OPTIONAL COLORS			
REV. LTR: E	BY: JLP	REVISED: 01/19/99 10:15	TDR: 0171435
S00000		FILE: AAA00005140	MDL: -
		MTL: -	

BALDOR ELECTRIC Co.

3PH, DV, 9 LEADS