

BALDOR® • RELIANCE™

Customer information packet

IDM2332T

60M 6P TEBC HOR 256TC T'STATS INV DUTY

Class - None

Division - Not Applicable

Specifications

| | |
|--------------------------------|--|
| Enclosure | TEBC |
| Frame | 256TC |
| Frame Material | Iron |
| Frequency | 60.00 Hz |
| Haz Area Class and Group | None |
| Haz Area Division | Not Applicable |
| Motor Letter Type | Three Phase |
| Output @ Frequency | 10.000 HP @ 60 HZ |
| Phase | 3 |
| Synchronous Speed @ Frequency | 1200 RPM @ 60 HZ |
| Voltage @ Frequency | 230.0 V @ 60 HZ 460.0 V @ 60 HZ |
| Agency Approvals | CSA UR |
| Ambient Temperature | 40 °C |
| Auxiliary Box | NO AUXILLARY BOX |
| Auxiliary Box Lead Termination | None |
| Base Indicator | Rigid |
| Bearing Grease Type | Polyrex EM (-20F +300F) |
| Blower | BLOWER |
| Current @ Voltage | 14.200 A @ 460.0 V 28.400 A @ 230.0 V 30.000 A @ 208.0 V |
| Design Code | A |
| Drip Cover | No Drip Cover |
| Duty Rating | CONT |
| Efficiency @ 100% Load | 91.0 % |
| Electrically Isolated Bearing | Not Electrically Isolated |
| Feedback Device | NO FEEDBACK |
| Front Shaft Indicator | None |
| Heater Indicator | No Heater |
| High Voltage Full Load Amps | 14.2 a |

Part detail

| | |
|--------------|------------|
| Revision | G |
| Type | AC |
| Mech. spec. | 09T110 |
| Base | |
| Status | PRD/A |
| Elec. spec. | 09WGX826 |
| Layout | 09LYT110 |
| Eff. date | 08-28-2025 |
| CD Diagram | CD0180 |
| Poles | 06 |
| Leads | 9#12 |
| Proprietary | False |
| Created date | 03-19-2019 |

| | |
|-------------------------------|----------------------------|
| Insulation Class | H |
| Inverter Code | Inverter Duty |
| KVA Code | J |
| Lifting Lugs | Standard Lifting Lugs |
| Locked Bearing Indicator | Locked Bearing |
| Max Speed | 5000 rpm |
| Motor Lead Quantity/Wire Size | 9 @ 12 AWG |
| Motor Lead Termination | Flying Leads |
| Motor Standards | NEMA |
| Motor Type | 0960M |
| Mounting Arrangement | F1 |
| Number of Poles | 6 |
| Overall Length | 29.41 IN |
| Power Factor | 72 |
| Product Family | General Purpose |
| Pulley End Bearing Type | Ball |
| Pulley Face Code | C-Face |
| Pulley Shaft Indicator | Standard |
| Rodent Screen | None |
| RoHS Status | ROHS COMPLIANT |
| Service Factor | 1.00 |
| Shaft Diameter | 1.625 IN |
| Shaft Ground Indicator | No Shaft Grounding |
| Shaft Rotation | Reversible |
| Shaft Slinger Indicator | Shaft Slinger |
| Speed | 1180 rpm |
| Speed Code | Single Speed |
| Starting Method | Direct on line |
| Thermal Device - Bearing | None |
| Thermal Device - Winding | Normally Closed Thermostat |
| Vibration Sensor Indicator | No Vibration Sensor |
| Winding Thermal 1 | None |
| Winding Thermal 2 | None |

Nameplate

| NP1163L | |
|---------------------|-------------------------------------|
| CAT NO | IDM2332T |
| SPEC. | 09T110X826G1 |
| FRAME | 256TC HP 10 TE |
| VOLTS | 230/460 |
| MAG CUR | 14.4/7.2 FLA 28.4/14.2 |
| RPM | 1180 RPM MAX 5000 |
| HZ | 60 PH 3 CLASS H |
| SER.F. | 1.00 DES A SL HZ 0.95 |
| NEMA-NOM-EFF | 91 WK2 4.82 |
| BLWR V | PH HZ A |
| RATING | 40C AMB-CONT |
| DE BRG | 6309 ODE BRG 6208 |
| CC | 010A SN 1000:1 CT, 1000:1 VT |

| | | | | | | | |
|------------|-----------|---------------------------------------|------|--|-------|----|--------|
| NP VOLTS | 230/460 | MAX SAFE RPM | 5000 | WYE CONN. EQ. CT OHMS PER PHASE (BASE RATING, 20C) | | | |
| NP AMPS | 28.4/14.2 | Base Volt | 460 | R1 | 0.357 | X1 | 2.070 |
| HP | 10HP | NL AMPS | 7.2 | R2 | 0.298 | X2 | 2.150 |
| BASE SPEED | 1180 | Slips (Hz) | 0.95 | | | XM | 33.700 |
| PHASE/HZ | 3/60 | WK ² (lb-ft ²) | 4.82 | | | | |

Rated Full Load Data


| | RPM | HP | Torque | Volts | Freq-Hz | Amps |
|------------|------|------|--------|-------|---------|------|
| Base Speed | 1181 | 10.0 | 44.4 | 460 | 60 | 14.2 |
| Max Speed | 1771 | 10.0 | 29.6 | 460 | 90 | 13.1 |
| Min Speed | 0 | 0.0 | 44.4 | 23.34 | 0.95 | 14.2 |

Load Performance at Base Speed

| | RPM | HP | Torque | Volts | Freq-Hz | Amps |
|-----------|------|------|--------|-------|---------|------|
| No Load | 1199 | 0.0 | 0.0 | 460 | 60 | 7.2 |
| 1/4 | 1196 | 2.5 | 11.1 | 460 | 60 | 8.0 |
| 1/2 | 1191 | 5.0 | 22.2 | 460 | 60 | 9.4 |
| 3/4 | 1186 | 7.5 | 33.3 | 460 | 60 | 11.6 |
| Full Load | 1181 | 10.0 | 44.4 | 460 | 60 | 14.2 |
| O/L | 1159 | 20.0 | 90.4 | 460 | 60 | 27.2 |

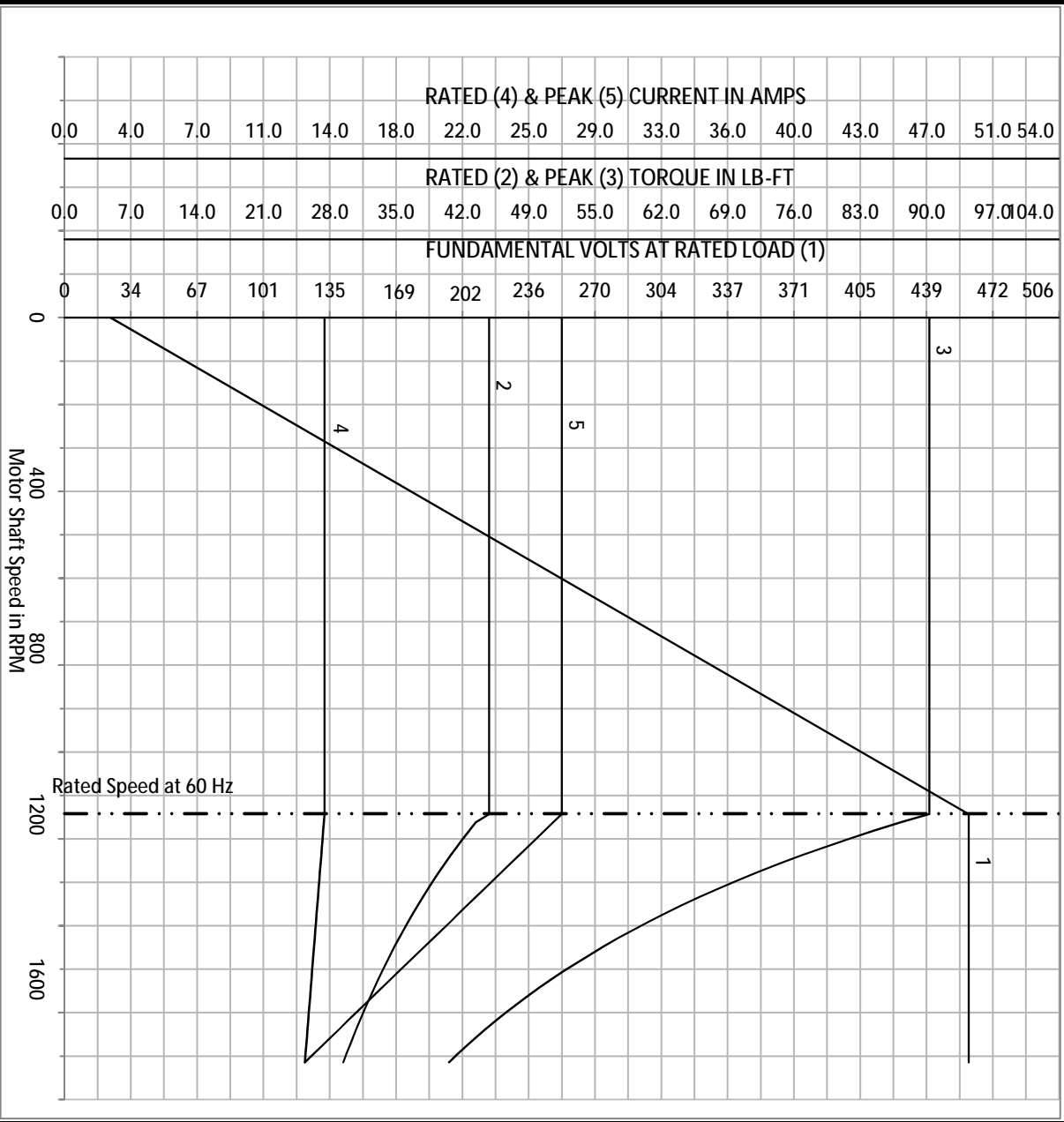
| Blower Data | Volts | Ph/Hz | FL Amps | LR Amps | Frame | CFM |
|-------------|-------|-------|---------|---------|-------|-----|
| | | | | | | |

Remarks: Calculated Data
Vector PWM Inverter Duty

| | | | |
|--|--------|-----------|------------------------------------|
|  A MEMBER OF THE ABB GROUP | DR BY | BR | A-C MOTOR PERFORMANCE CURVES |
| | CK BY | BR | |
| | APP BY | | |
| | DATE | 3/28/2017 | |

| | | | | |
|------------|-----------|---------------------------|------|---|
| NP VOLTS | 230/460 | MAX SAFE RPM | 5000 | WFE CONN EQ.CKT OHMS PER PHASE (BASE RATING, 20C) |
| NP AMPS | 28.4/14.2 | Base Volt | 460 | R1 0.357 X1 2.070 |
| HP | 10HP | NL AMPS | 7.15 | R2 0.298 X2 2.150 |
| BASE SPEED | 1180 | Slips (Hz) | 0.95 | XM 33.700 |
| PHASE/HZ | 3/60 | WK2 (lb-ft ²) | 4.82 | |

Vector PWM Inverter Duty
Variable Speed AC Motor Curves



Calculated Data

Data Valid For Nameplate Speed Range only

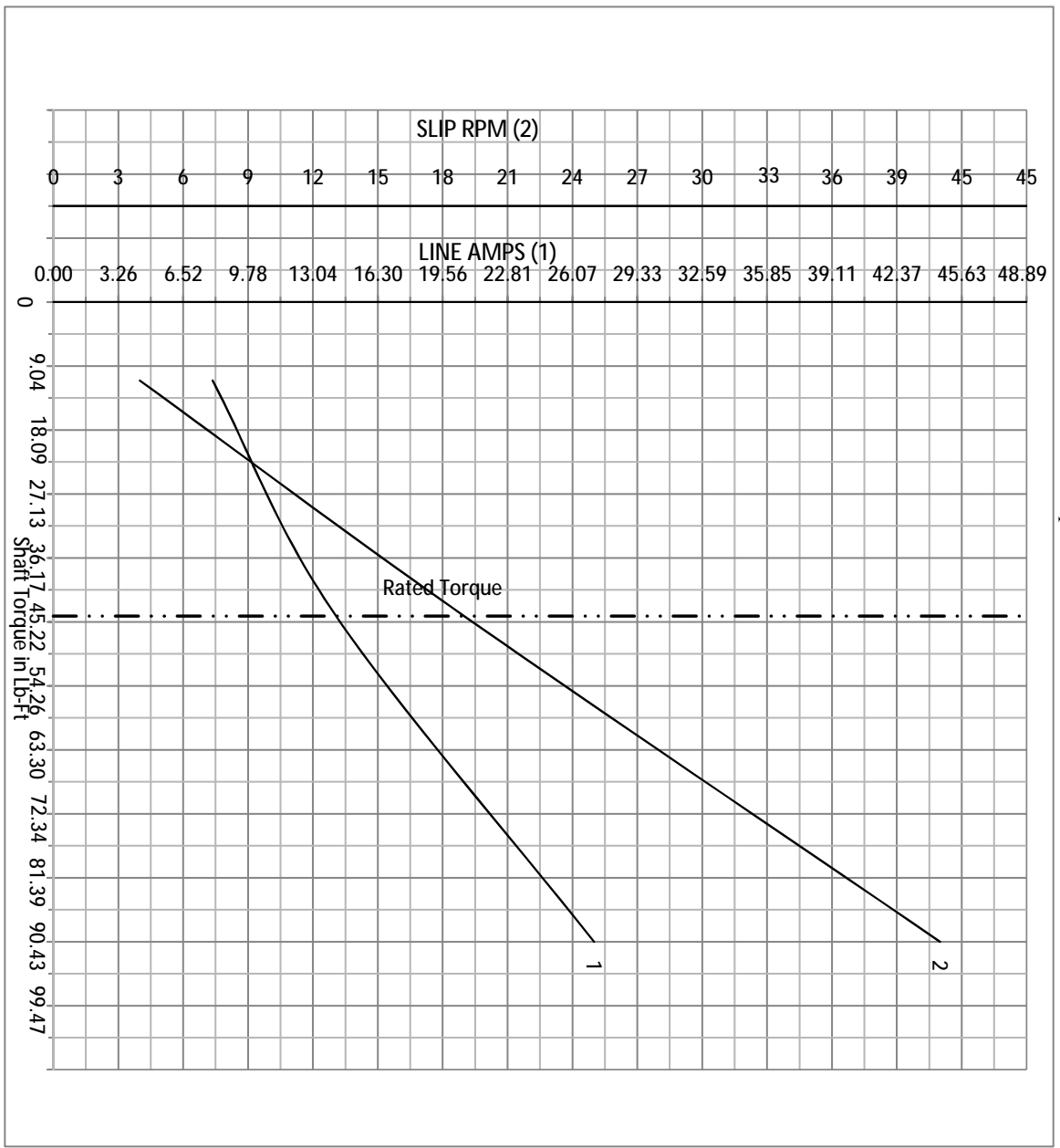


DR BY BR
CK BY BR
APP BY BR
DATE 3/28/2017

A-C MOTOR PERFORMANCE CURVES
09W GX826

| | | | | |
|------------|-----------|---------------------------|------|---|
| NP VOLTS | 230/460 | MAX SAFE RPM | 5000 | WYE CONN EQ.CKT OHMS PER PHASE (BASE RATING, 20C) |
| NP AMPS | 28.4/14.2 | Base Volt | 460 | R1 0.357 X1 2.070 |
| HP | 10HP | NL AMPS | 7.15 | R2 0.298 X2 2.150 |
| BASE SPEED | 1180 | Slips (Hz) | 0.95 | XM 33.700 |
| PHASE/HZ | 3/60 | WK2 (lb-ft ²) | 4.82 | |

Vector PWM Inverter Duty
Variable Speed AC Motor Curves

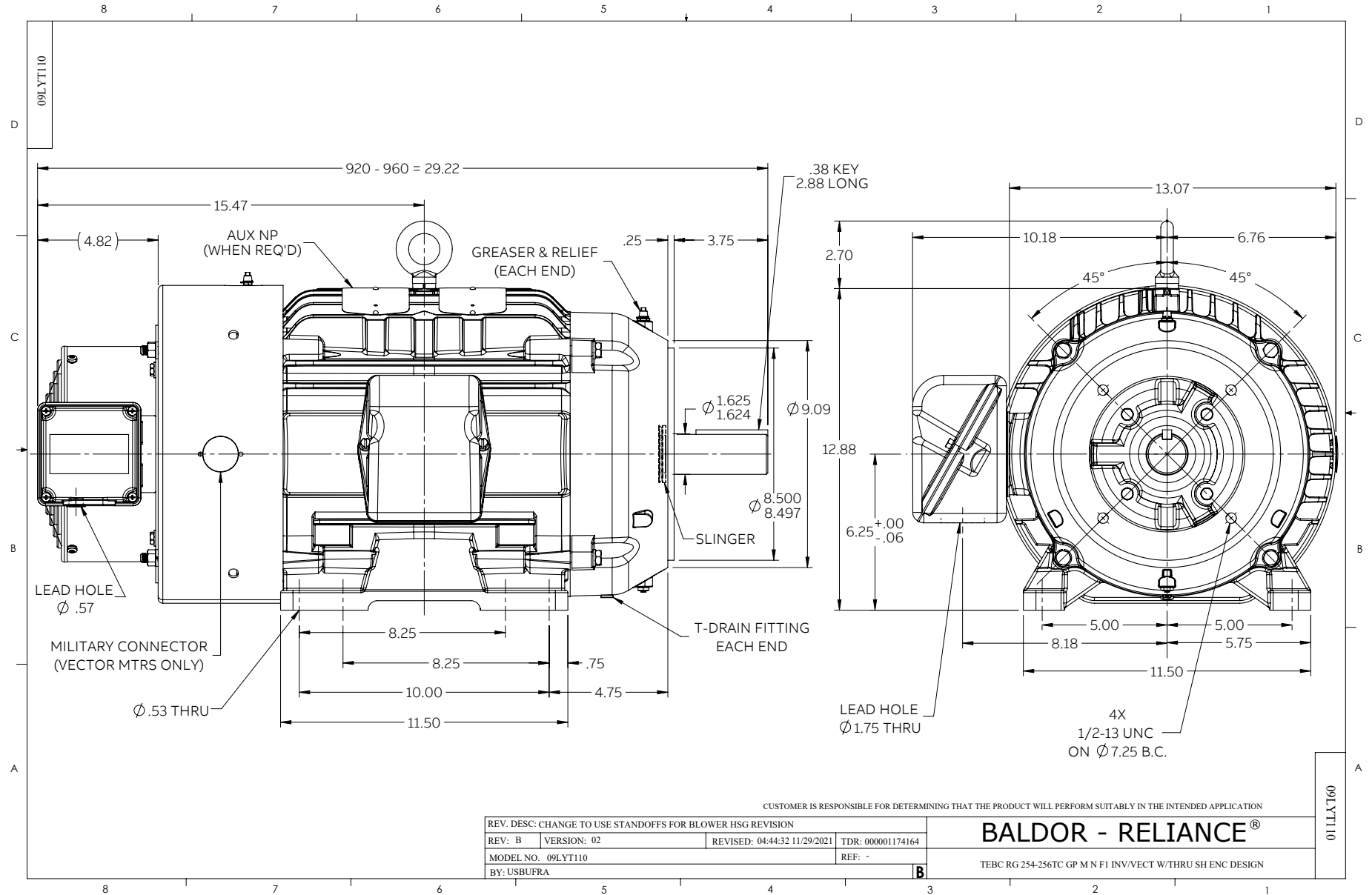


Calculated Data
Data Valid For Nameplate Speed Range only



DR BY BR
CK BY BR
APP BY BR
DATE 3/28/2017

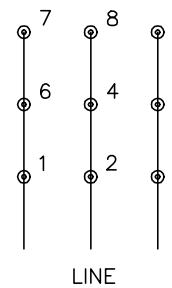
A-C MOTOR PERFORMANCE CURVES 09WGX826



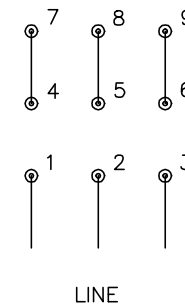
CD0180



LOW VOLTAGE
(2D)



HIGH VOLTAGE
(1D)



NOTES:

1. INTERCHANGE ANY TWO LINE LEADS TO REVERSE ROTATION.
2. OPTIONAL THERMOSTATS ARE PROVIDED WHEN SPECIFIED.
3. ACTUAL NUMBER OF INTERNAL PARALLEL CIRCUITS MAY BE A MULTIPLE OF THOSE SHOWN ABOVE.
4. LEAD COLORS ARE OPTIONAL. LEADS MUST ALWAYS BE NUMBERED AS SHOWN.

CD0180

| | | |
|-----------------------------------|--------------------------------|-------------------|
| REV. DESC: ADD CLASS CONN00000007 | | |
| REV. LTR: D | VERSION: 01 | TDR: 000001099922 |
| FILE: \AAA\00005\148 | REVISED: 10: 25: 29 02/19/2019 | BY: ENBRIRO |
| MTL: - | © □ | |

BALDOR - RELIANCE®

3PH, DV, 9 LEADS, DELTA CONNECTION

SH 1 of 1