

RPM-AC FINNED FRAME VARIABLE SPEED ALTERNATING CURRENT MOTOR  
FL/UFL2882Z

ENCLOSURE: TOTALLY ENCLOSED

MOUNTING: FOOT

COOLING: FAN COOLED

DRIVE METHOD: COUPLED OR BELTED

ACCESSORIES: PROVISIONS FOR  
TACHOMETER MOUNTING  
ONLY WHEN SPECIFIED

D

C

B

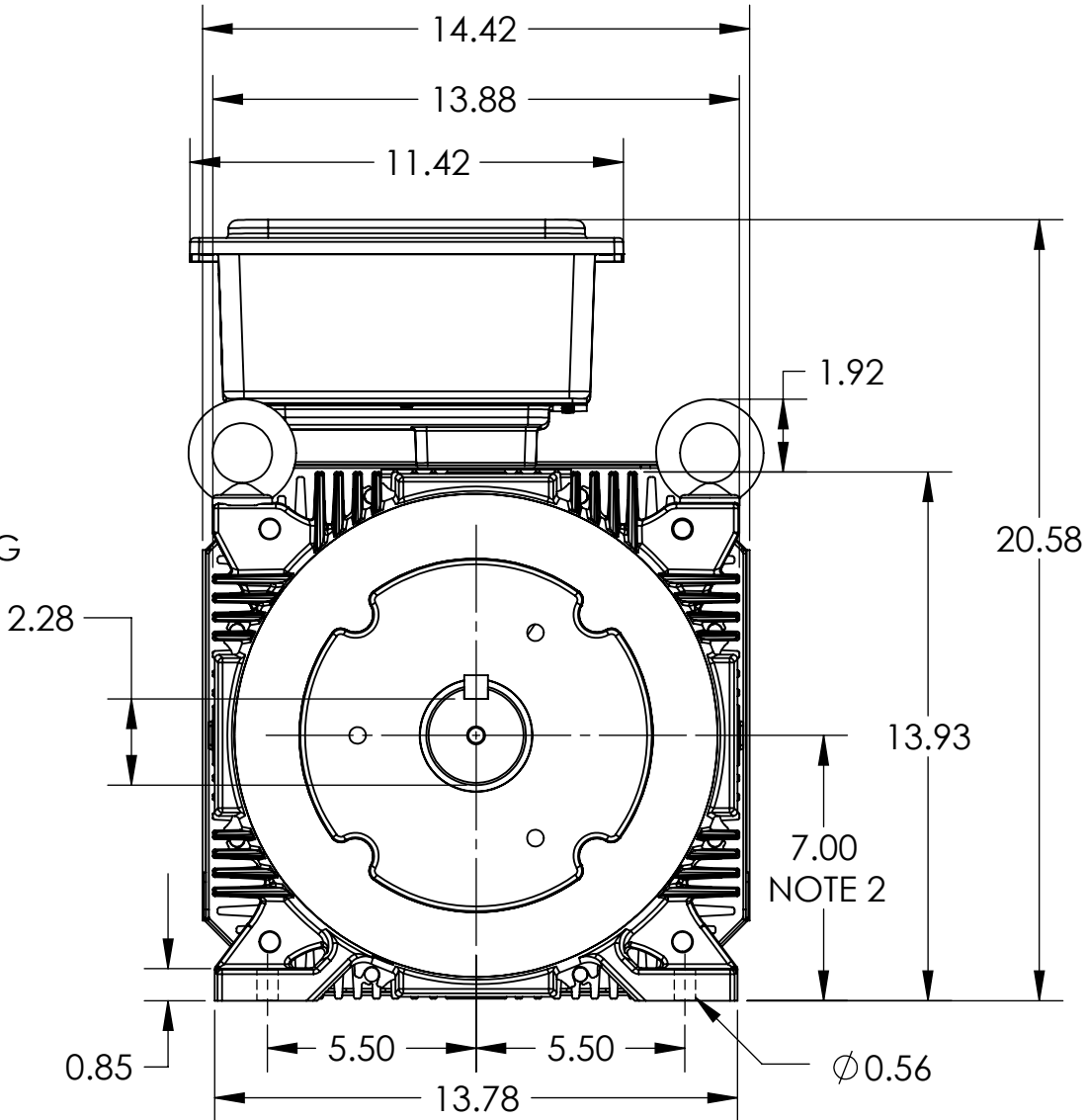
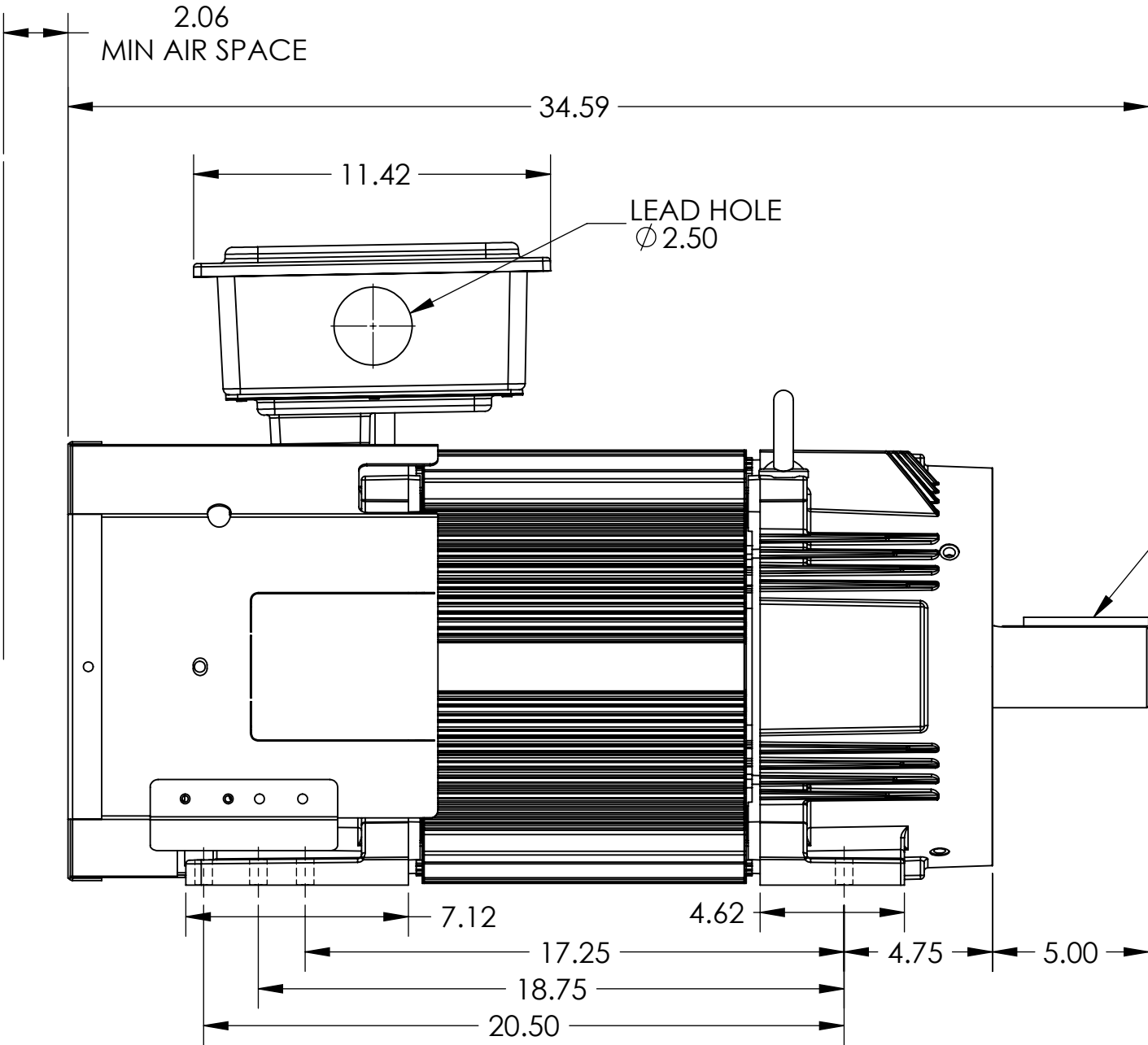
A

D

C

B

A



235 AMP MILL BOX SHOWN.  
ROTATABLE IN 90° INCREMENTS

DIMENSIONS ARE IN INCHES  
MOTOR WEIGHT: 720 LBS. (MAY VARY 15%)

NOTE 1: O.D.E. C-FACE & TACHOMETER MOUNTING  
1/2-13 TAP, 1.00 DEEP, ON A Ø 7.25 B.C.  
FACE RUNOUT AND ECCENTRICITY 0.004 MAX. T.I.R.

NOTE 2: SHAFT HEIGHT WILL NOT BE EXCEEDED  
SHIMS UP TO 0.03 INCHES IN THICKNESS ARE USUALLY  
REQUIRED FOR COUPLED OR GEARED MACHINES

CUSTOMER IS RESPONSIBLE FOR DETERMINING THAT THE PRODUCT WILL PERFORM SUITABLY IN THE INTENDED APPLICATION

|                            |             |                              |                   |
|----------------------------|-------------|------------------------------|-------------------|
| REV. DESC: INITIAL RELEASE |             |                              |                   |
| REV: -                     | VERSION: 00 | REVISED: 07:51:00 10/21/2021 | TDR: 000001179382 |
| MODEL NO. 617242-073       |             |                              | REF: -            |
| BY: USWATUR                |             |                              | <b>B</b>          |

**BALDOR - RELIANCE®**

DIM SHT,FL/UFL2882Z,TEFC,PROV FOR TACH,FT MTG,F3 MILL C/B

617242-073

617242-073