

**BALDOR® • RELIANCE™**

---

# Customer information packet

## IDDRPM5815006

1500HP, 1150, 690V, RL5835, DPFV, F1

## Specifications

Enclosure	DPFV
Frame	RL5835Z
Frame Material	Exposed Laminations
Frequency	40.00 Hz
Output @ Frequency	1500.000 HP @ 40 HZ
Phase	3
Synchronous Speed @ Frequency	1200 RPM @ 40 HZ
Voltage @ Frequency	690.0 V @ 40 HZ
Agency Approvals	CCSA US
Auxiliary Box	NO AUXILLARY BOX
Base Indicator	Rigid
Bearing Grease Type	Polyrex EM (-20F +300F)
Current @ Voltage	1155.000 A @ 690.0 V
Duty Rating	CONT
Feedback Device	NO FEEDBACK
Frame Prefix	RL
Heater Indicator	No Heater
High Voltage Full Load Amps	1155.0 a
Insulation Class	H
IP Rating	NONE
Motor Standards	NEMA
Mounting Arrangement	F1
Overall Length	83.54 IN
Product Family	General Industrial
Pulley End Bearing Type	Ball
Pulley Face Code	Standard
Service Factor	1.00
Shaft Diameter	4.875 IN
Shaft Ground Indicator	Shaft Grounding
Shaft Rotation	Reversible
Speed	1187 rpm
Starting Method	Full Voltage

## Part detail

Revision	-
Type	AC
Mech. spec.	
Base	
Status	PRD/A
Elec. spec.	L9912A
Layout	627004-001
Eff. date	08-15-2025
CD Diagram	422927-001
Poles	04
Leads	
Proprietary	False
Created date	07-18-2025

**Thermal Device - Bearing**

None

**Thermal Device - Winding**

Normally Closed Thermostat

---

**Nameplate**

**000613006MY**

	<b>DUTY</b>	<b>HP</b>	<b>RPM</b>	<b>AMPS</b>	<b>VOLTS</b>	<b>HZ</b>	
	CONT	1500	1187		1155	690	40
<b>CAT.NO.</b>	IDDRPM5815006		<b>SPEC. NO.</b>		R58-A000-0004		
<b>SER.NO</b>		<b>FR</b>	RL5835Z	<b>INSUL</b>	H		
<b>PH.</b>	3	<b>MAX SAFE SPEED</b>		2100	<b>AMB.</b>	40	<b>MIN. AMB.</b> -25
<b>DESIGN NO.</b>	L9912A	<b>TYPE</b>			<b>ENCL.</b>	DPG-FV	
<b>S.F.</b>	1.00		<b>D.E. BRG.</b>		130BC02J30X		
<b>ENCL MOD</b>		<b>O.D.E. BRG.</b>		6224/C3J20AA			
	IP23						

S/O	-	VOLTS	690	ENCLOSURE	DPFV	WYE CONN EQ CKT OHMS PER PHASE (AT BASE RATING, 25°C)
FRAME	RL5835	AMPS	1155	MAX SAFE SPEED	2100	
HP	1500	DUTY	CONT	IM (AMPS)	434	R1 .00322 X1 .0341
BASE SPEED	1187	S.F.	1.0	P.F. @NL / FL	.020/.861	R2 .00267 X2 .0326
PHASE/HZ	3/40	AMB: °C / INSUL	40/H	WK² (Lb-Ft²)	388	XM .930


**RATED FULL LOAD DATA**

	RPM	HP	TORQUE LB-FT	FUND VOLTS	FREQ-HZ	AMPS
BASE SPEED	1187	1500	6633	690	40	1155
MAX SPEED	1187	1500	6633	690	40	1155
MIN SPEED	0	0	6633	10.8	.428	1155

**LOAD PERFORMANCE AT BASE SPEED**

	RPM	HP	TORQUE LB-FT	FUND VOLTS	FREQ-HZ	AMPS
NO LOAD	1200	0	0	690	40	434
1/4	1197	375	1646	690	40	510
1/2	1194	749	3296	690	40	683
3/4	1191	1124	4957	690	40	905
FULL LOAD	1187	1499	6633	690	40	1155
0/L	1171	2959	13265	690	40	2361

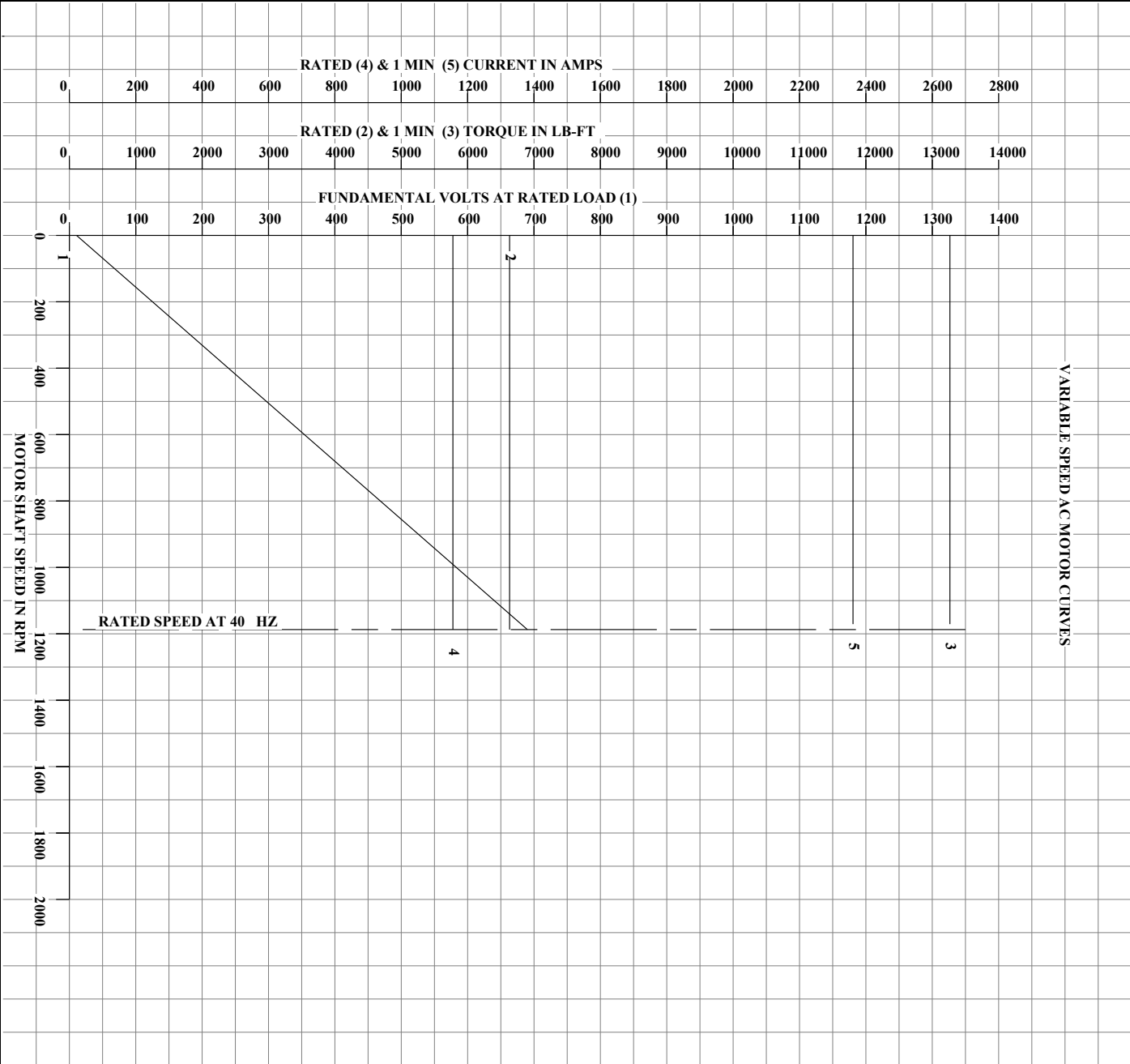
REMARKS:  
TYPICAL DATA

	DRAWN BY: RGARCIA	<b>AC MOTOR PERFORMANCE DATA</b>	<b>L9912A</b>
	CHECKED BY: RGARCIA APPROVED BY: BSPRES DATE: 07-07-25		

USRIGAR4

Printed on 07/07/2025 4:13 PM

S/O	-	VOLTS	690	ENCLOSURE	DPFV	WYE CONN EQ CKT OHMS PER PHASE (AT BASE RATING, 25°C)
FRAME	RL5835	AMPS	1155	MAX SAFE SPEED	2100	R1 .00322 X1 .0341
HP	1500	DUTY	CONT	PFV	434	R2 .00267 X2 .0326
BASE SPEED	1187	S.F.	1.0	P.F. @NL / FL	.020/.861	X3 .0300
PHASE/HZ	3/40	AMB. °C / INSUL.	40/H	WK² (Lb-Ft²)	388	X4 .0300



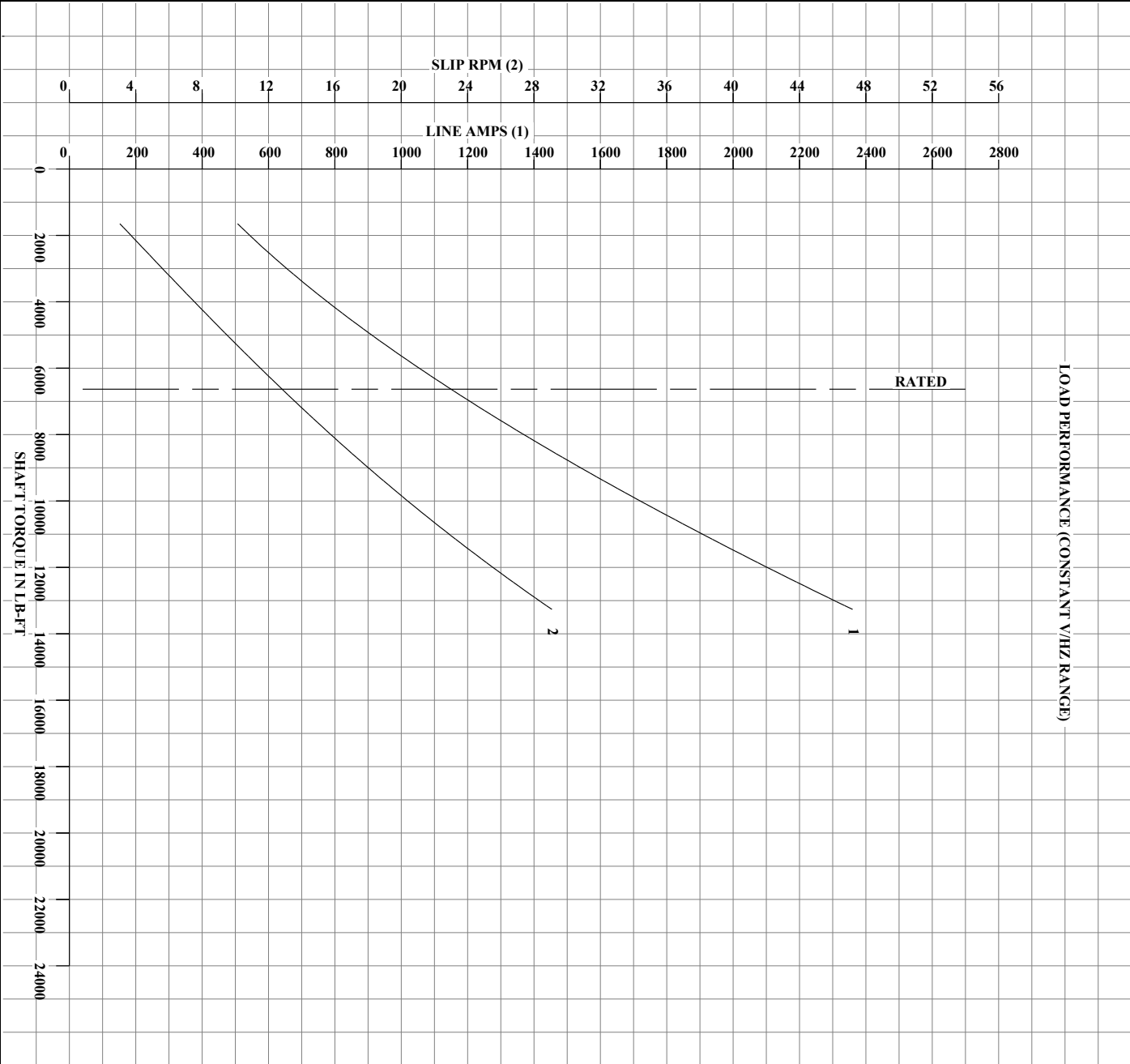
TYPICAL DATA. DATA VALID FOR NAMEPLATE SPEED RANGE ONLY

	DRAWN BY: <u>R.GARCIA</u> CHECKED BY: <u>R.GARCIA</u> APPROVED BY: <u>B.SPIRES</u> DATE: <u>07-07-25</u>	AC MOTOR PERFORMANCE DATA	L9912A ISSUE DATE: 07-07-25
---	---	---------------------------------	--------------------------------

USRIGAR4

Printed on 07/07/2025 4:13 PM

S/O	-	VOLTS	690	ENCLOSURE	DPFV	WYE CONN EQ CKT OHMS PER PHASE (AT BASE RATING, 25°C)
FRAME	RL5835	AMPS	1155	MAX SAFE SPEED	2100	R1 .00322 X1 .0341
HP	1500	DUTY	1.0	P.F. @NL/FL	.020/.861	R2 .00267 X2 .0326
BASE SPEED	1187	S.F.	40/H	WK² (Lb-Ft²)	388	XM .930
PHASE/HZ	3/40	AMB. °C / INSUL.				



TYPICAL DATA. DATA VALID FOR NAMEPLATE SPEED RANGE ONLY



**AC MOTOR  
PERFORMANCE  
DATA**

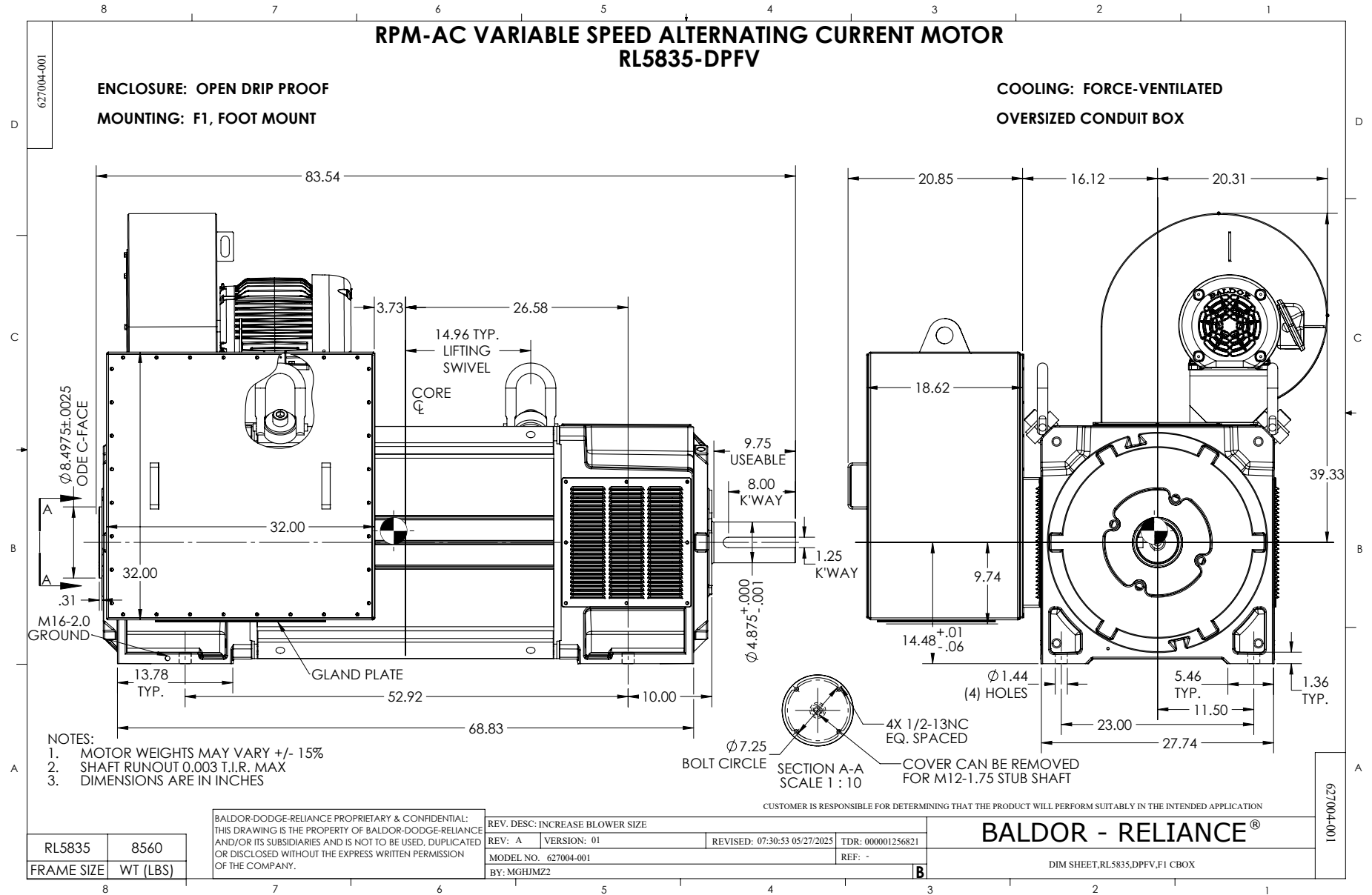
**L9912A**

DRAWN BY: **R.GARCIA**  
 CHECKED BY: **R.GARCIA**  
 APPROVED BY: **B.SPIRES**  
 DATE: **07-07-25**

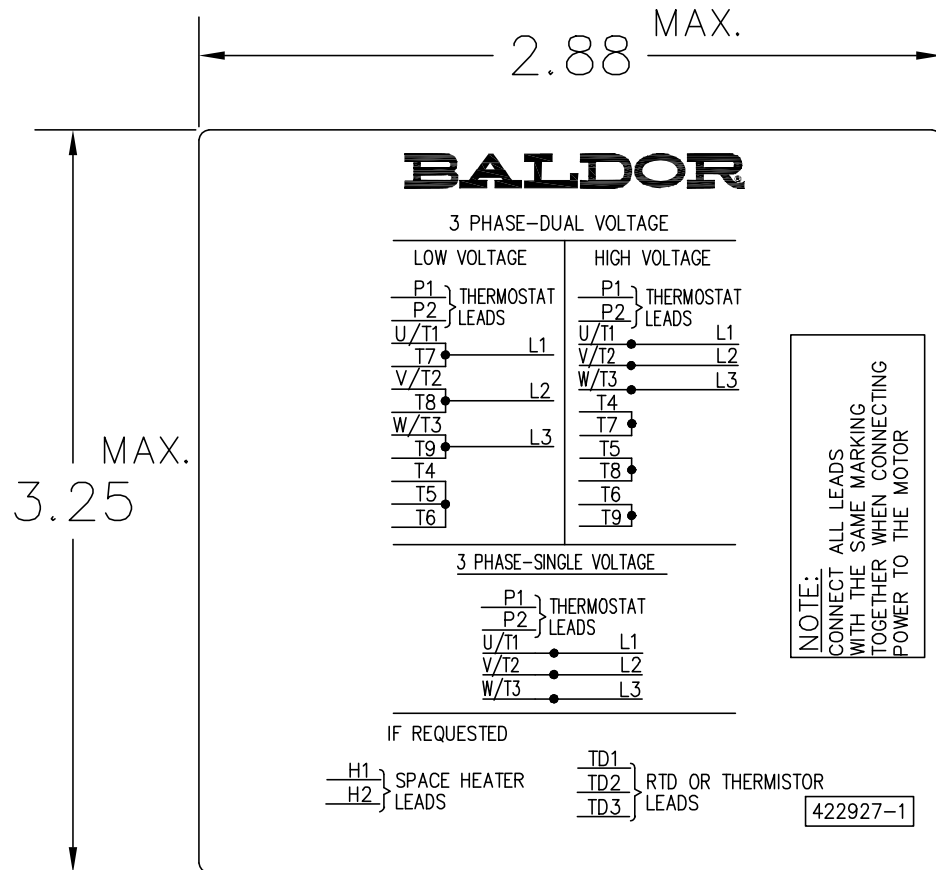
ISSUE DATE: **07-07-25**

USRIGAR4

Printed on 07/07/2025 4:13 PM



422927-001



NOTE:  
DATA TO BE SIZED  
SO THAT IT FITS INTO  
MATERIAL DECAL  
DIMENSIONS. MAKE  
LETTERS & NUMBERS  
AS LARGE AS POSSIBLE.

MATERIAL: CERAMATIC DGF-P4  
PERMA GRIP ADHESIVE

ALL LETTERS, NUMBERS  
AND LINES TO BE BLACK  
ON WHITE BACKGROUND.

422927-001

REV. DESC: CHANGE BACKGROUND COLOR FROM GOLD TO WHITE		
REV. LTR: B	VERSION: 02	TDR: 00000788708
FILE: \RGG\00000\203	REVISED: 08:09:29 03/04/2013	
MTL: -	BY: RGGWT	

**BALDOR**

EXTERNAL CONNECTION LABEL

SH 1 of 1