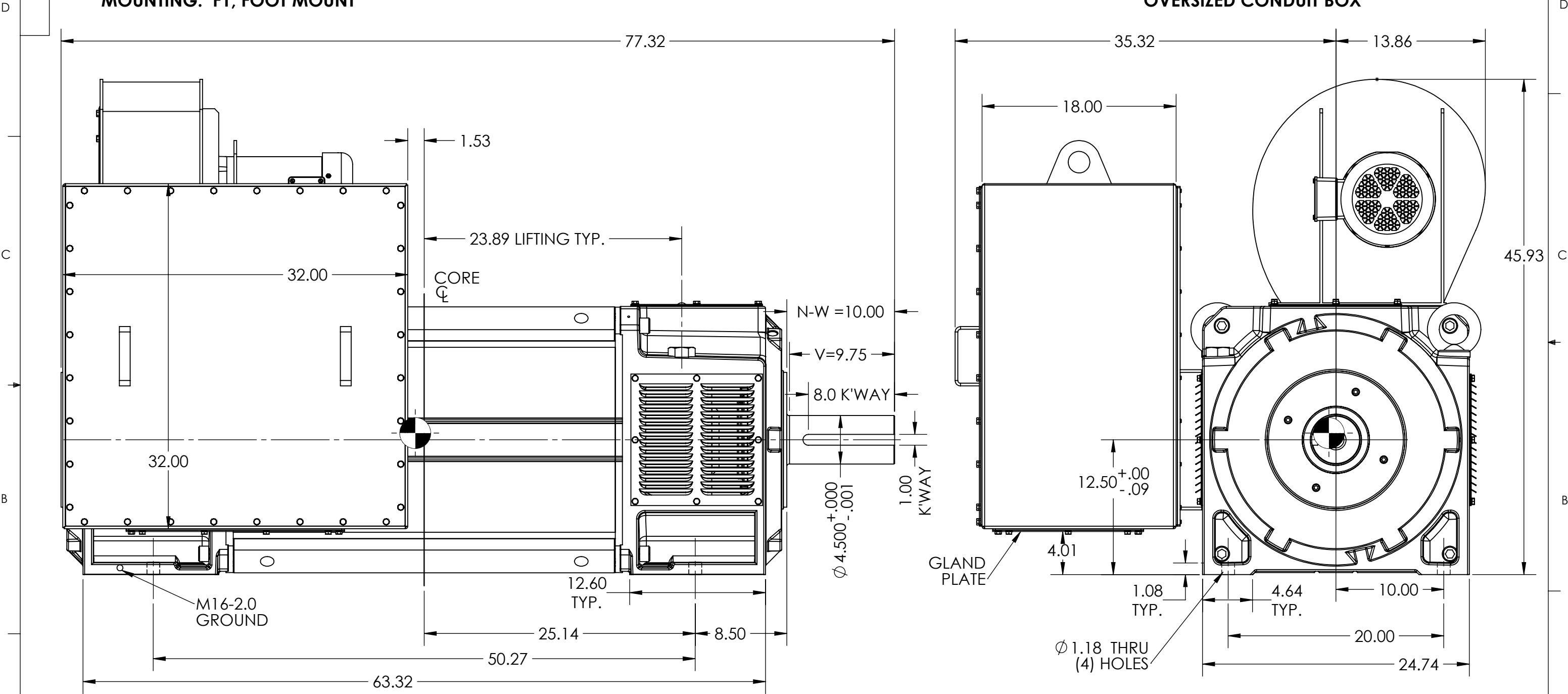


RPM-AC VARIABLE SPEED ALTERNATING CURRENT MOTOR
RL5035-DPFV

ENCLOSURE: OPEN DRIP PROOF
MOUNTING: F1, FOOT MOUNT

COOLING: FORCE-VENTILATED
OVERSIZED CONDUIT BOX



- NOTES:
1. MOTOR WEIGHTS MAY VARY +/- 15%
 2. SHAFT RUNOUT 0.003 T.I.R. MAX
 3. DIMENSIONS ARE IN INCHES

CUSTOMER IS RESPONSIBLE FOR DETERMINING THAT THE PRODUCT WILL PERFORM SUITABLY IN THE INTENDED APPLICATION

REV. DESC: CORRECT SHAFT V DIMENSION TO 9.75			
REV: C	VERSION: 03	REVISED: 10:02:32 01/27/2022	TDR: 000001185048
MODEL NO. 622004-001			REF: -
BY: USANBRO28			B

RL5035	6730
FRAME SIZE	WT (LBS)

BALDOR-DODGE-RELIANCE PROPRIETARY & CONFIDENTIAL:
THIS DRAWING IS THE PROPERTY OF BALDOR-DODGE-RELIANCE
AND/OR ITS SUBSIDIARIES AND IS NOT TO BE USED, DUPLICATED
OR DISCLOSED WITHOUT THE EXPRESS WRITTEN PERMISSION
OF THE COMPANY.

BALDOR - RELIANCE®

DIM SHEET, RL5035,FT. MNT, F1 O/S CBOX,F3 BLOWER,4.500 SHAFT

622004-001