

**BALDOR • RELIANCE**

---

# Customer information packet

## IDDRPM5010006

1000HP, 1150, 460V, RL5024, DPFV, F1

## Specifications

Enclosure	DPFV
Frame	RL5024Z
Frame Material	Exposed Laminations
Frequency	39.00 Hz
Output @ Frequency	1000.000 HP @ 39 HZ
Phase	3
Synchronous Speed @ Frequency	1200 RPM @ 39 HZ
Voltage @ Frequency	460.0 V @ 39 HZ
Agency Approvals	CCSA US
Auxillary Box	No Auxillary Box
Base Indicator	Rigid
Bearing Grease Type	Polyrex EM (-20F +300F)
Current @ Voltage	1152.000 A @ 460.0 V
Duty Rating	CONT
Feedback Device	ENCODER
Frame Prefix	RL
Heater Indicator	No Heater
High Voltage Full Load Amps	1152.0 a
Insulation Class	H
IP Rating	NONE
Motor Standards	NEMA
Mounting Arrangement	F1
Overall Length	65.51 IN
Product Family	General Industrial
Pulley End Bearing Type	Ball
Pulley Face Code	Standard
Service Factor	1.00
Shaft Diameter	4.500 IN
Shaft Ground Indicator	No Shaft Grounding
Shaft Rotation	Reversible
Speed	1150 rpm
Starting Method	Full Voltage

## Part detail

Revision	C
Type	AC
Mech. spec.	
Base	
Status	PRD/A
Elec. spec.	L9076A
Layout	622012-011
Eff. date	08-24-2023
CD Diagram	422927-001
Poles	04
Leads	
Proprietary	False
Created date	11-11-2021

**Thermal Device - Bearing**

None

**Thermal Device - Winding**

Normally Closed Thermostat

---

**Nameplate**

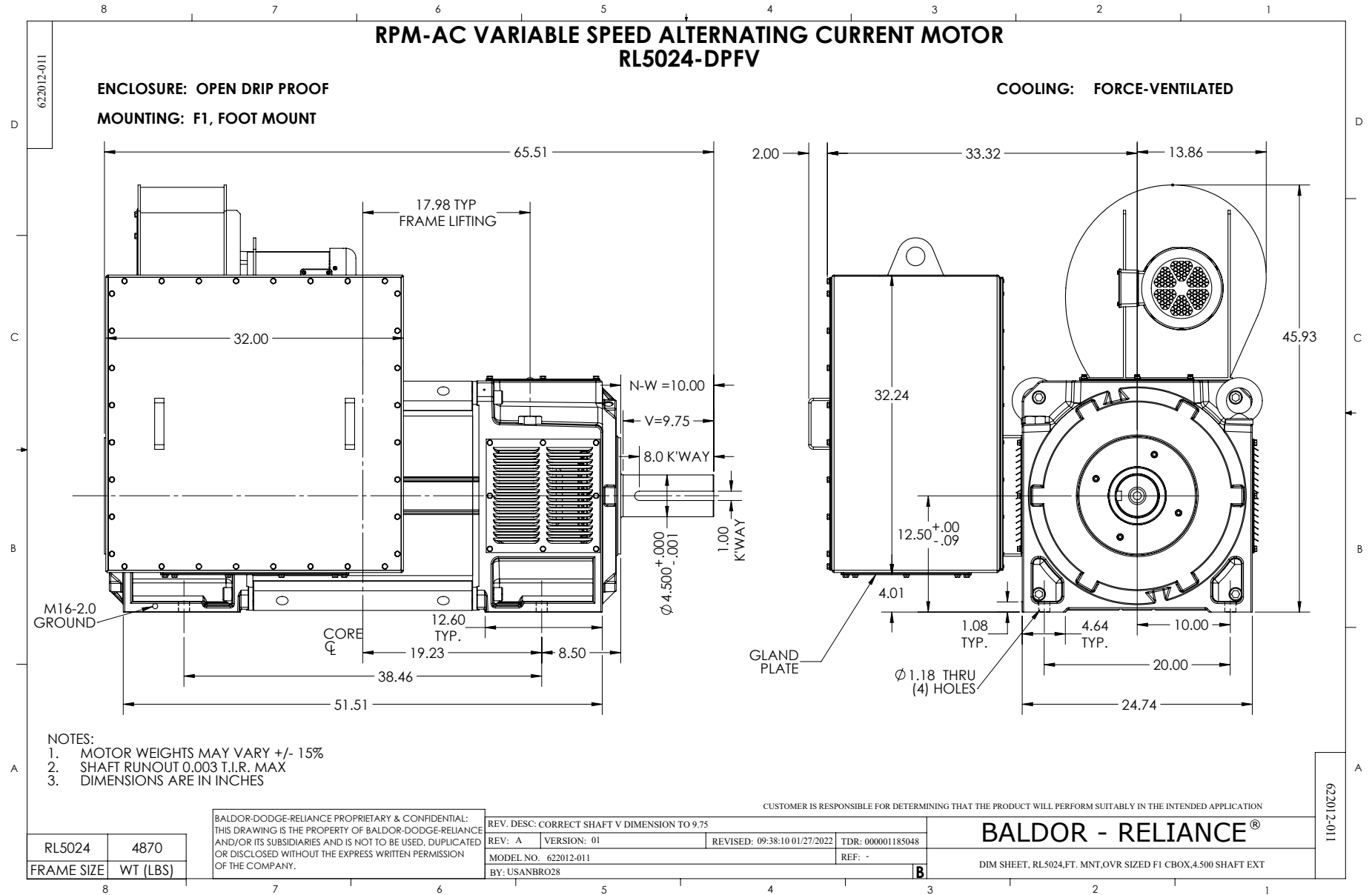
**000613006MY**

	<b>DUTY</b>	<b>HP</b>	<b>RPM</b>	<b>AMPS</b>	<b>VOLTS</b>	<b>HZ</b>	
	CONT	1000	1150	1152	460	39	
	CONT	1000	1725	1157	460	58.5	
<b>CAT.NO.</b>	IDDRPM5010006		<b>SPEC. NO.</b>	R50-A000-0008			
<b>SER.NO</b>		<b>FR</b>	RL5024Z	<b>INSUL</b>	H		
<b>PH.</b>	3	<b>MAX SAFE SPEED</b>	3000	<b>AMB.</b>	40	<b>MIN. AMB.</b>	-25
<b>DESIGN NO.</b>	L9076A	<b>TYPE</b>		<b>ENCL.</b>	DPG-FV		
<b>S.F.</b>	1.00		<b>D.E. BRG.</b>	120BC02J30X			
<b>ENCL MOD</b>		<b>O.D.E. BRG.</b>	6224/C3J20AA				
	IP23						



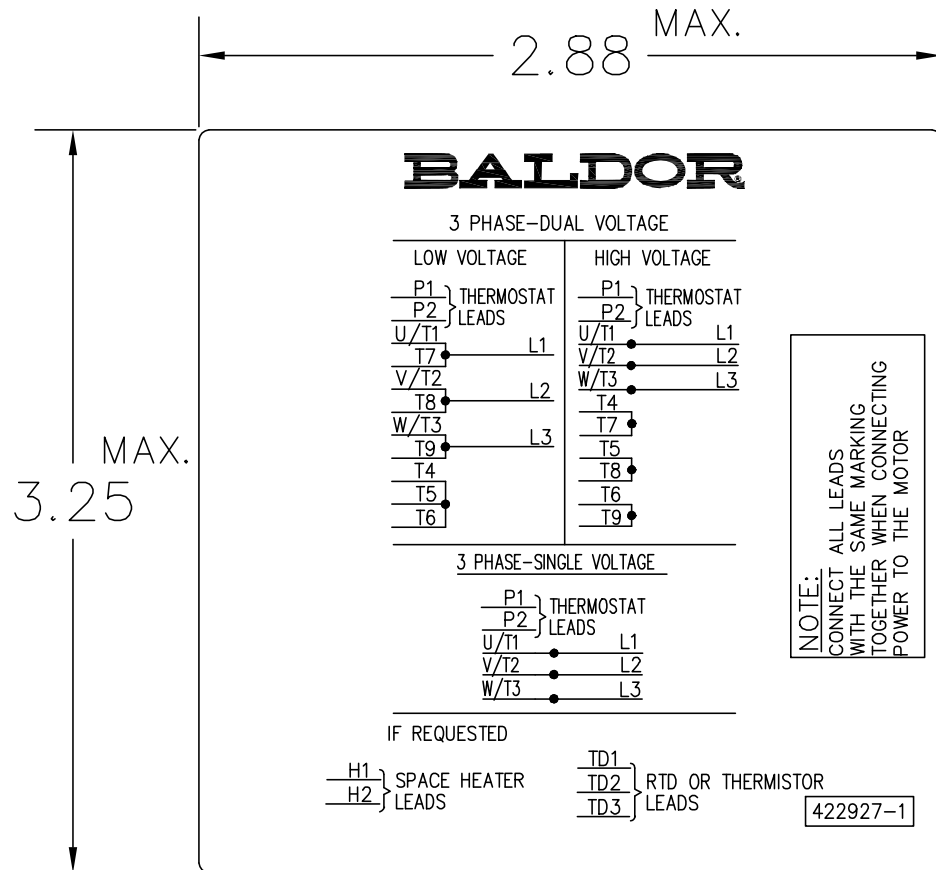








422927-001



NOTE:  
DATA TO BE SIZED  
SO THAT IT FITS INTO  
MATERIAL DECAL  
DIMENSIONS. MAKE  
LETTERS & NUMBERS  
AS LARGE AS POSSIBLE.

MATERIAL: CERAMATIC DGF-P4  
PERMA GRIP ADHESIVE

ALL LETTERS, NUMBERS  
AND LINES TO BE BLACK  
ON WHITE BACKGROUND.

422927-001

REV. DESC: CHANGE BACKGROUND COLOR FROM GOLD TO WHITE		
REV. LTR: B	VERSION: 02	TDR: 00000788708
FILE: \RGG\00000\203	REVISED: 08:09:29 03/04/2013	
MTL: -	BY: RGGWT	

**BALDOR**

EXTERNAL CONNECTION LABEL

SH 1 of 1