

**BALDOR • RELIANCE**

---

# Customer information packet

## IDDRPM449004R1

900HP, 1750, 460V, RL4461, DPFV, F1

## Specifications

Enclosure	DPFV
Frame	RL4461Z
Frame Material	Exposed Laminations
Frequency	90.00 Hz
Output @ Frequency	900.000 HP @ 90 HZ
Phase	3
Synchronous Speed @ Frequency	1800 RPM @ 90 HZ
Voltage @ Frequency	460.0 V @ 90 HZ
Agency Approvals	CCSA US
Auxillary Box	No Auxillary Box
Base Indicator	Rigid
Bearing Grease Type	Polyrex EM (-20F +300F)
Current @ Voltage	1077.000 A @ 460.0 V
Duty Rating	CONT
Feedback Device	ENCODER
Frame Prefix	RL
Heater Indicator	No Heater
High Voltage Full Load Amps	1077.0 a
Insulation Class	H
IP Rating	NONE
Motor Standards	NEMA
Mounting Arrangement	F1
Overall Length	64.64 IN
Product Family	General Industrial
Pulley End Bearing Type	Ball
Pulley Face Code	Standard
Service Factor	1.00
Shaft Diameter	4.250 IN
Shaft Ground Indicator	Shaft Grounding
Shaft Rotation	Reversible
Speed	1785 rpm
Starting Method	Full Voltage

## Part detail

Revision	A
Type	AC
Mech. spec.	
Base	
Status	PRD/A
Elec. spec.	L9465A
Layout	617602-001
Eff. date	03-23-2023
CD Diagram	422927-001
Poles	06
Leads	
Proprietary	False
Created date	02-28-2023

**Thermal Device - Bearing**

None

**Thermal Device - Winding**

Thermostat And RTD

---

**Nameplate**

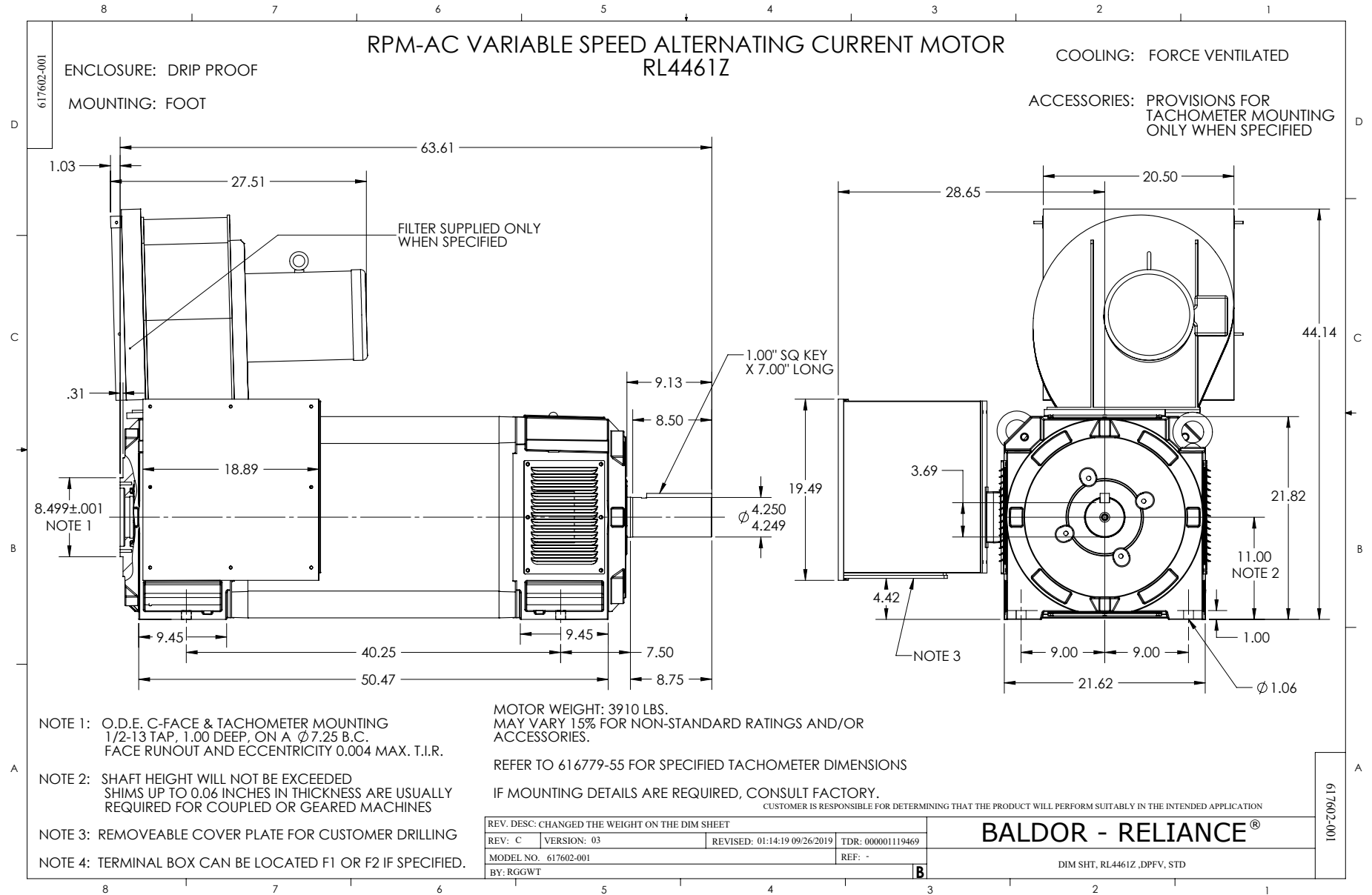
**000613006MY**

	<b>DUTY</b>	<b>HP</b>	<b>RPM</b>	<b>AMPS</b>	<b>VOLTS</b>	<b>HZ</b>	
	CONT	900	1785	1077	460		90
	CONT	900	2625	1073	460		132.4
<b>CAT.NO.</b>	IDDRPM449004R1		<b>SPEC. NO.</b>		R44-A000-0226		
<b>SER.NO</b>		<b>FR</b>	RL4461Z	<b>INSUL</b>	H		
<b>PH.</b>	3	<b>MAX SAFE SPEED</b>		2700	<b>AMB.</b>	40	<b>MIN. AMB.</b> -25
<b>DESIGN NO.</b>	L9465A	<b>TYPE</b>			<b>ENCL.</b>	DPG-FV	
<b>S.F.</b>	1.00		<b>D.E. BRG.</b>		110BC02J30X		
<b>ENCL MOD</b>		<b>O.D.E. BRG.</b>		6222/C3VL0241			
	IP23						



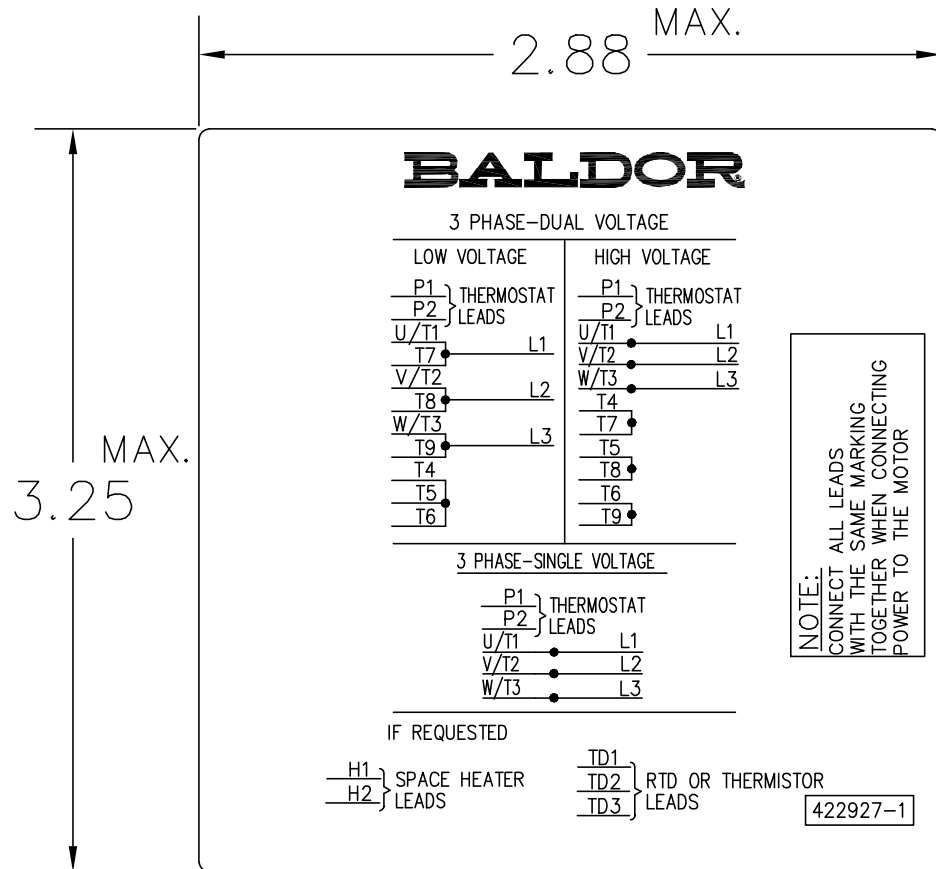








422927-001



NOTE:  
DATA TO BE SIZED SO THAT IT FITS INTO MATERIAL DECAL DIMENSIONS. MAKE LETTERS & NUMBERS AS LARGE AS POSSIBLE.

MATERIAL: CERAMATIC DGF-P4  
PERMA GRIP ADHESIVE

ALL LETTERS, NUMBERS AND LINES TO BE BLACK ON WHITE BACKGROUND.

422927-001

REV. DESC: CHANGE BACKGROUND COLOR FROM GOLD TO WHITE		
REV. LTR: B	VERSION: 02	TDR: 00000788708
FILE: \RGG\00000\203	REVISED: 08:09:29 03/04/2013	
MTL: -	BY: RGGWT	

**BALDOR**

EXTERNAL CONNECTION LABEL

SH 1 of 1