

ABB BALDOR RELIANCE III



Customer information packet IDDRPM448004ED

800HP, 1750, 460V, RL4440, DPFV, F1

Specifications

Enclosure	DPFV
Frame	RL4440Z
Frame Material	Exposed Laminations
Frequency	882.00 Hz
Output @ Frequency	800.000 HP @ 882 HZ
Phase	3
Synchronous Speed @ Frequency	1800 RPM @ 882 HZ
Voltage @ Frequency	460.0 V @ 882 HZ
Agency Approvals	CCSA US
Auxiliary Box	NO AUXILLARY BOX
Base Indicator	Rigid
Bearing Grease Type	Polyrex EM (-20F +300F)
Current @ Voltage	1002.000 A @ 460.0 V
Duty Rating	CONT
Feedback Device	NO FEEDBACK
Frame Prefix	RL
Heater Indicator	No Heater
High Voltage Full Load Amps	1002.0 a
Insulation Class	H
IP Rating	NONE
Motor Standards	NEMA
Mounting Arrangement	F1
Overall Length	59.39 IN
Product Family	Extruder
Pulley End Bearing Type	Ball
Pulley Face Code	Standard
Service Factor	1.00
Shaft Diameter	4.250 IN
Shaft Ground Indicator	Shaft Grounding
Shaft Rotation	Reversible
Speed	1750 rpm
Starting Method	Full Voltage

Part Detail

Revision	A
Type	AC
Mech. spec.	
Base	
Status	PRD/A
Elec. spec.	L9464A
Layout	617600-001
Eff. date	03-23-2023
CD Diagram	422927-001
Poles	06
Leads	
Proprietary	False
Created date	02-28-2023

Thermal Device - Bearing

None

Thermal Device - Winding

Thermostat And RTD

Nameplate

000613006ABS

	DUTY	HP	RPM	AMPS	VOLTS	HZ	
	CONT	800	1750		1002	460	88.2
	CONT	800	2625		945	460	132.3
CAT.NO.	IDDRPM448004ED		SPEC. NO.		R44-A000-0228		
SER.NO			FR	RL4440Z	INSUL	H	
PH.	3	MAX SAFE SPEED		2700	AMB.	40	MIN. AMB. -25
DESIGN NO.	L9464A		TYPE		ENCL.	DPG-FV	
S.F.	1.00		D.E. BRG.		110BC02J30X		
ENCL MOD			O.D.E. BRG.		6222/C3VL0241		
	IDDRPM448004ED				IP23		

FRAME	RL4440	AMPS	1002	MAX SAFE SPEED	2700			
HP	800	DUTY	CONT	IM (AMPS)	454	R1	.00210	X1 .0293
BASE SPEED	1750	S.F.	1.0	P.F. @NL / FL	.021/.789	R2	.00148	X2 .0411
PHASE/HZ	3/88.2	AMB.°C / INSUL	40/H	WK ² (Lb-Ft ²)	169			XM .583

RATED FULL LOAD DATA

	RPM	HP	TORQUE LB-FT	FUND VOLTS	FREQ-HZ	AMPS
BASE SPEED	1751	800	2400	460	88.2	1003
MAX SPEED	2625	801	1601	460	132.3	945
MIN SPEED	0	0	2400	6.14	.6540	1003

LOAD PERFORMANCE AT BASE SPEED

	RPM	HP	TORQUE LB-FT	FUND VOLTS	FREQ-HZ	AMPS
NO LOAD	1764	0	0	460	88.2	445
1/4	1761	200	597	460	88.2	507
1/2	1758	401	1197	460	88.2	639
3/4	1754	601	1798	460	88.2	809
FULL LOAD	1751	800	2400	460	88.2	1003
0/L	1734	1585	4800	460	88.2	1936

REMARKS:
TYPICAL DATA
CORRELATED DATA



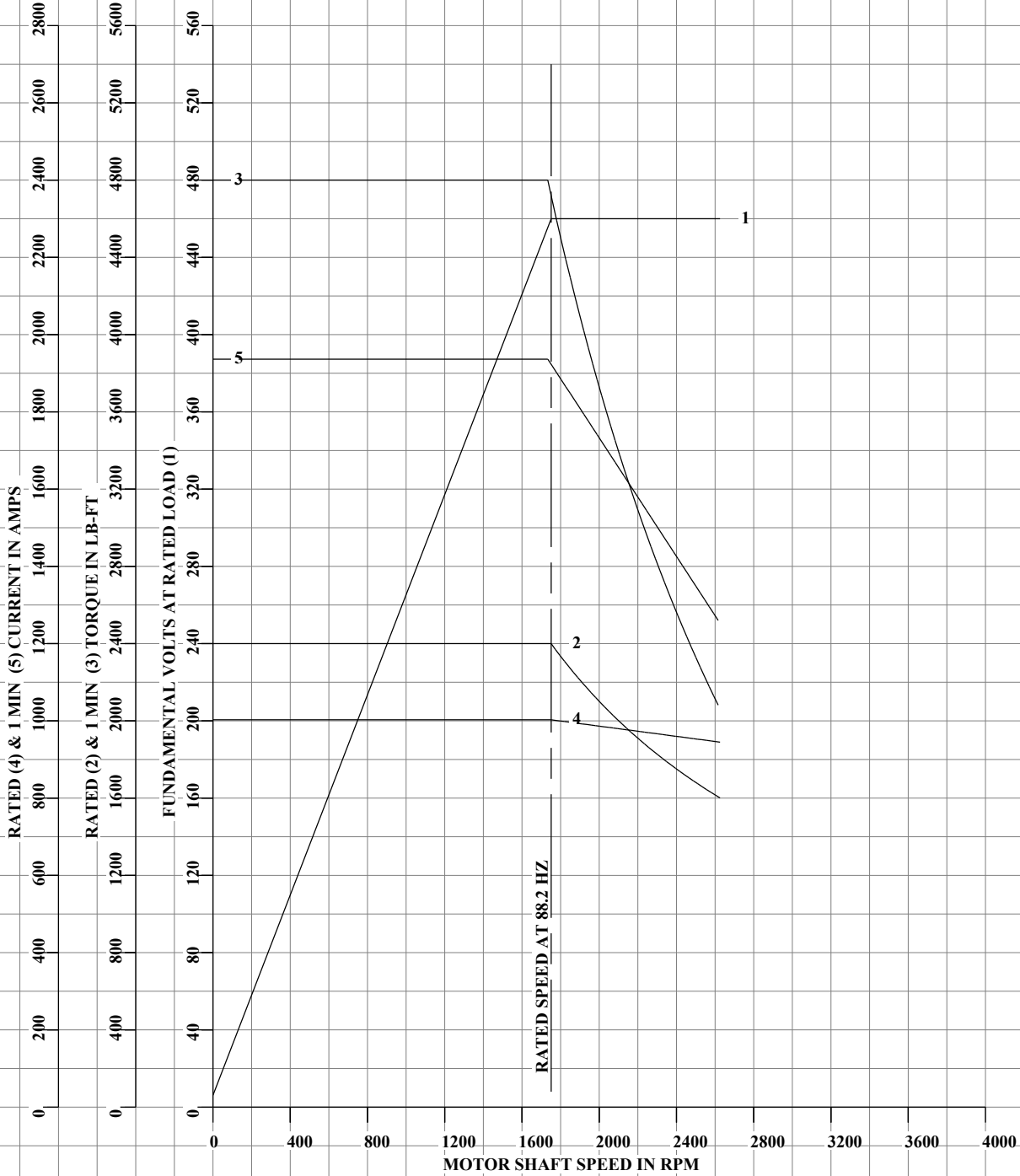
DRAWN BY: A. BROOKINS
CHECKED BY: R.GARCIA
APPROVED BY: J. MARTIN
DATE: 3-17-23

AC MOTOR
PERFORMANCE
DATA

L9464A
ISSUE DATE 3-17-23

		VOLTS	460	ENCLOSURE	DPFV	WYE CONN EQ CKT OHMS PER PHASE (AT BASE RATING, 25°C)		
FRAME	RL4440	AMPS	1002	MAX SAFE SPEED	2700			
HP	800	DUTY	CONT	IM (AMPS)	454	R1	.00210	X1 .0293
BASE SPEED	1750	S.F.	1.0	P.F. @NL / FL	.021/.789	R2	.00148	X2 .0411
PHASE/HZ	3/88.2	AMB.°C / INSUL	40/H	WK ² (Lb-Ft ²)	169			XM .583

**CORRELATED DATA
VARIABLE SPEED AC MOTOR CURVES**



TYPICAL DATA, DATA VALID FOR NAMEPLATE SPEED RANGE ONLY



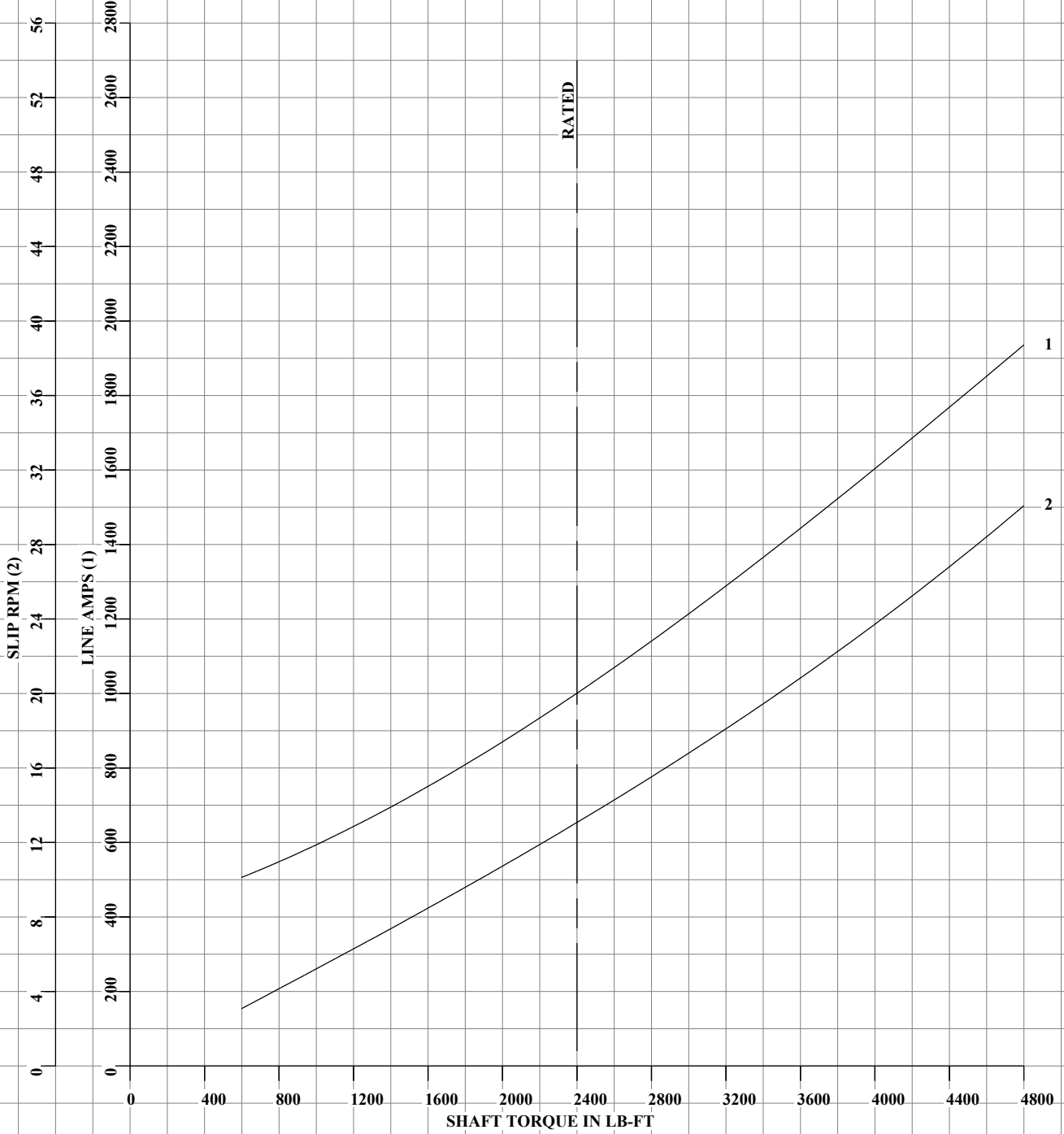
DRAWN BY: A. BROOKINS
 CHECKED BY: R.GARCIA
 APPROVED BY: J. MARTIN
 DATE: 3-17-23

**AC MOTOR
PERFORMANCE
DATA**

L9464A
 ISSUE DATE: 3-17-23

		VOLTS	460	ENCLOSURE	DPFV	WYE CONN EQ CKT OHMS PER PHASE (AT BASE RATING, 25°C)		
FRAME	RL4440	AMPS	1002	MAX SAFE SPEED	2700			
HP	800	DUTY	CONT	IM (AMPS)	454	R1	.00210	X1 .0293
BASE SPEED	1750	S.F.	1.0	P.F. @NL / FL	.021/.789	R2	.00148	X2 .0411
PHASE/HZ	3/88.2	AMB.°C / INSUL	40/H	WK ² (Lb-Ft ²)	169			XM .583

**CORRELATED DATA
LOAD PERFORMANCE (CONSTANT V/HZ RANGE)**



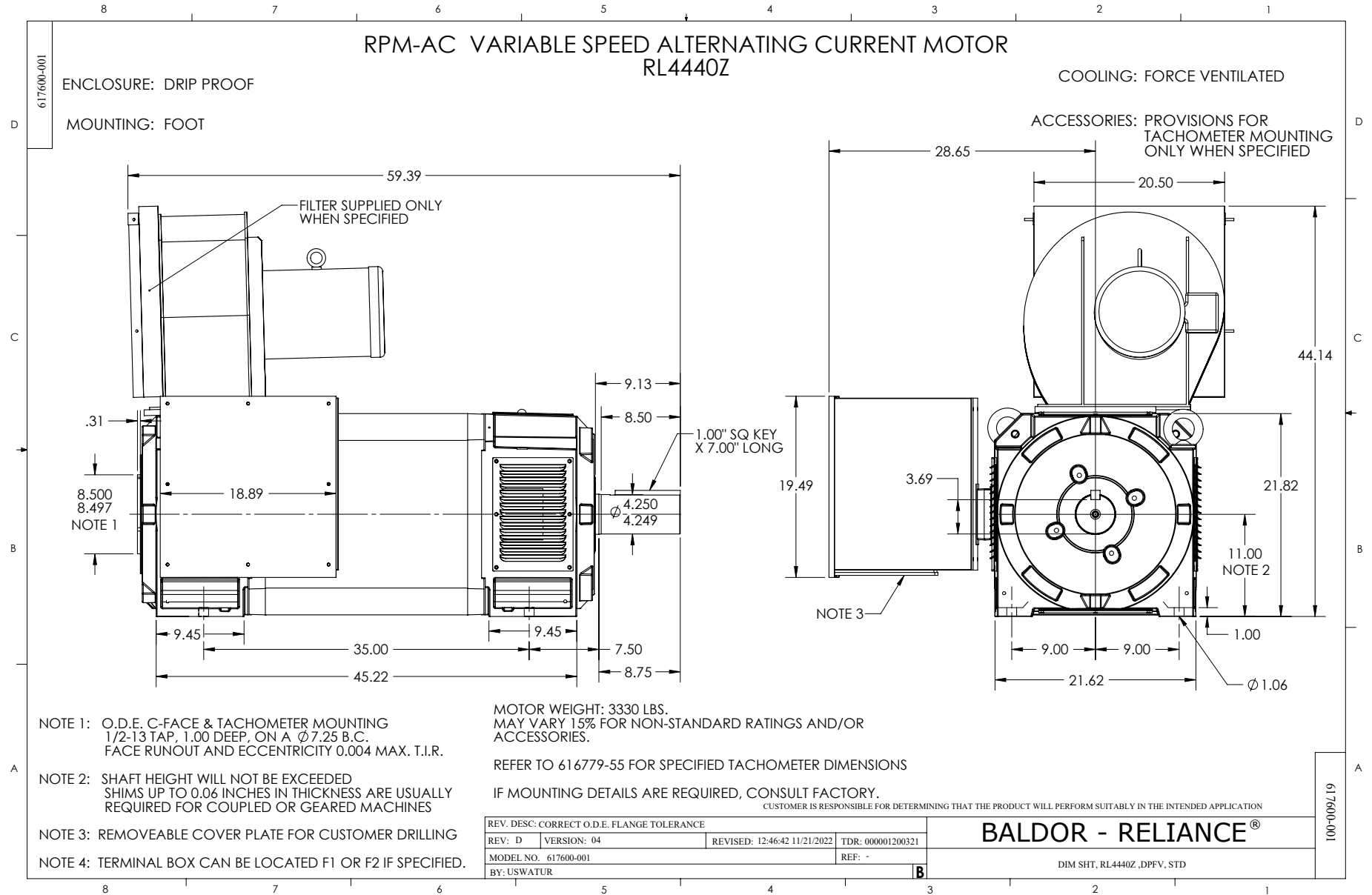
TYPICAL DATA, DATA VALID FOR NAMEPLATE SPEED RANGE ONLY



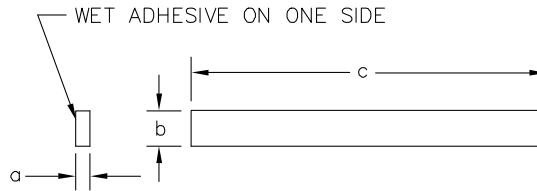
DRAWN BY: A. BROOKINS
 CHECKED BY: R.GARCIA
 APPROVED BY: J. MARTIN
 DATE: 3-17-23

**AC MOTOR
PERFORMANCE
DATA**

L9464A
 ISSUE DATE: 3-17-23



065564-004



SYM	MAKE FROM 065564-004	a	b	c	REMARKS
A	X	1/8	5/8	24*	TERMBOX & CVR 180AT-250AT
B	X	1/8	5/8	37 1/2*	TERMBOX & CVR 280AT-320AT
C	Y	1/4	5/8	44 1/2 Δ	FILTER TO HOUSING GASKET
D	X	1/8	5/8	170"	TEAO HEAT EXCH.
E	Y	1/4	5/8	72" Δ	TERMBOX & CVR

SYM	MAT'L SPEC	a	b	c
X	46024-XV	1/8	5/8	* 50' ROLL; WET ADHESIVE ON ONE SIDE
Y	46024-XV	1/4	5/8	* 50' ROLL; WET ADHESIVE ON ONE SIDE

Δ RELIANCE WILL CUT AND MOUNT ON FILTER HOUSING PER ASSEMBLY DRAWING 603989-2.

* PROD. NOTE: WHEN ORDERING THRU PURCHASING ORDER AS 50 FT. ROLLS, WET ADHESIVE ON ONE SIDE. RELIANCE WILL CUT AND MOUNT ON COVER. PER INSTRUCTIONS ON COVER DRAWINGS.

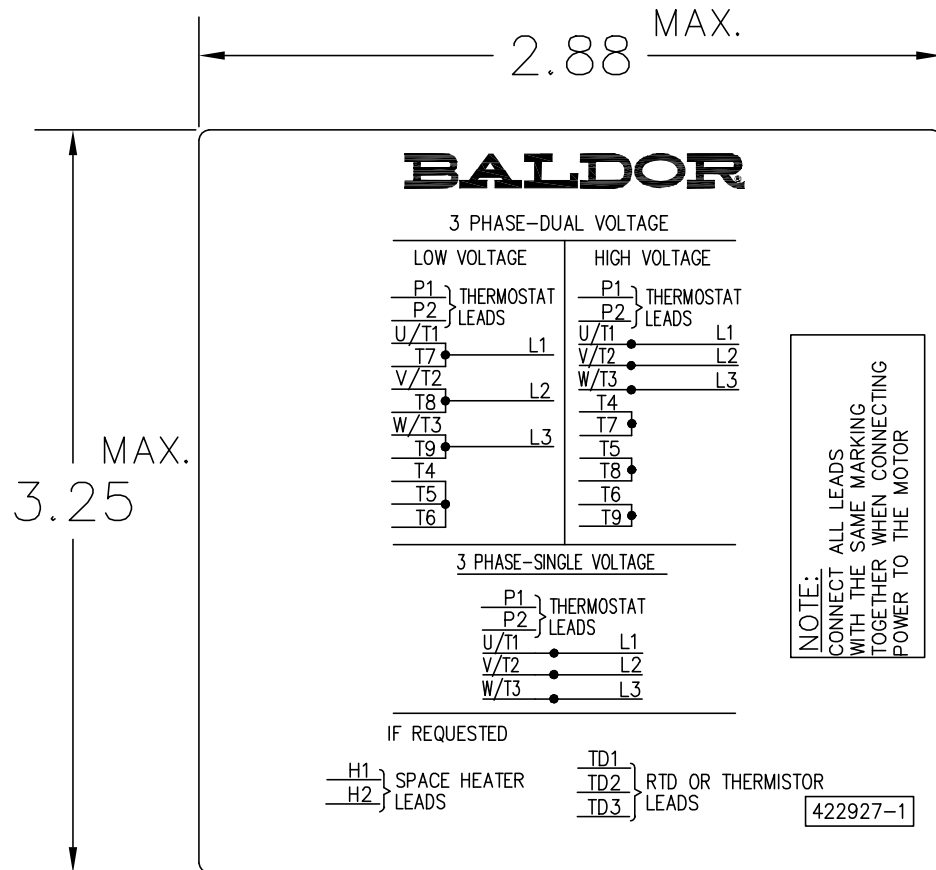
065564-004

CUSTOMER IS RESPONSIBLE FOR DETERMINING THAT BALDOR'S PRODUCT WILL PERFORM SUITABLY IN THE INTENDED APPLICATION.

REV. DESC: CHANGE DESCRIPTION ON TITLE BLOCK		
REV. LTR: C	VERSION: 03	TDR: 000000571980
FILE: \RGG\00000\220	REVISED: 10:54:04 12/16/2010	BY: RGGWT
MTL: -		

BALDOR
GASKET,STRIP,CLOSED CELL NEOPRENE
SH 1 of 1

422927-001



NOTE:
DATA TO BE SIZED
SO THAT IT FITS INTO
MATERIAL DECAL
DIMENSIONS. MAKE
LETTERS & NUMBERS
AS LARGE AS POSSIBLE.

MATERIAL: CERAMATIC DGF-P4
PERMA GRIP ADHESIVE

ALL LETTERS, NUMBERS
AND LINES TO BE BLACK
ON WHITE BACKGROUND.

422927-001

REV. DESC: CHANGE BACKGROUND COLOR FROM GOLD TO WHITE		
REV. LTR: B	VERSION: 02	TDR: 00000788708
FILE: \RGG\00000\203	REVISED: 08:09:29 03/04/2013	
MTL: -	BY: RGGWT	

BALDOR

EXTERNAL CONNECTION LABEL

SH 1 of 1