

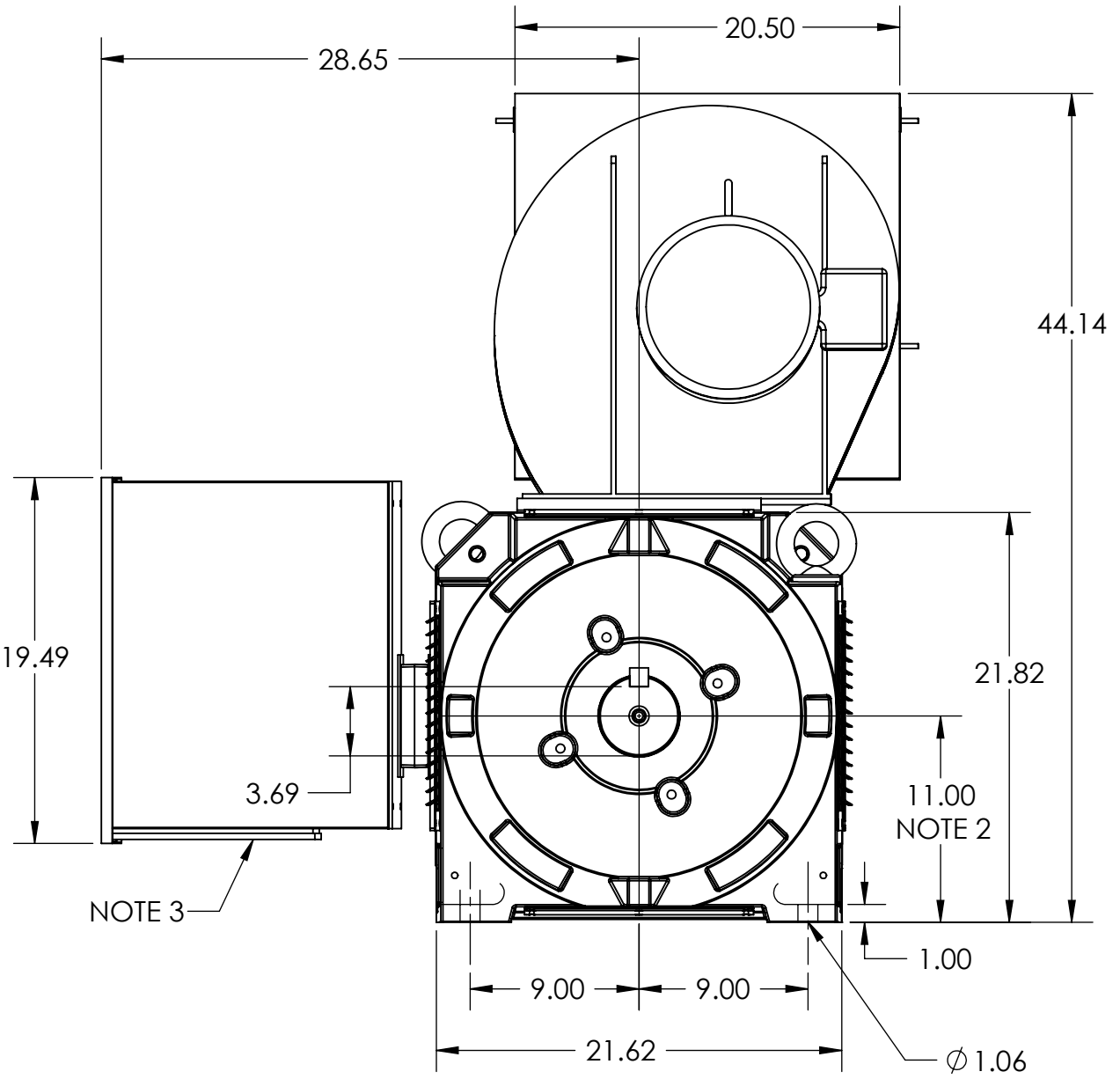
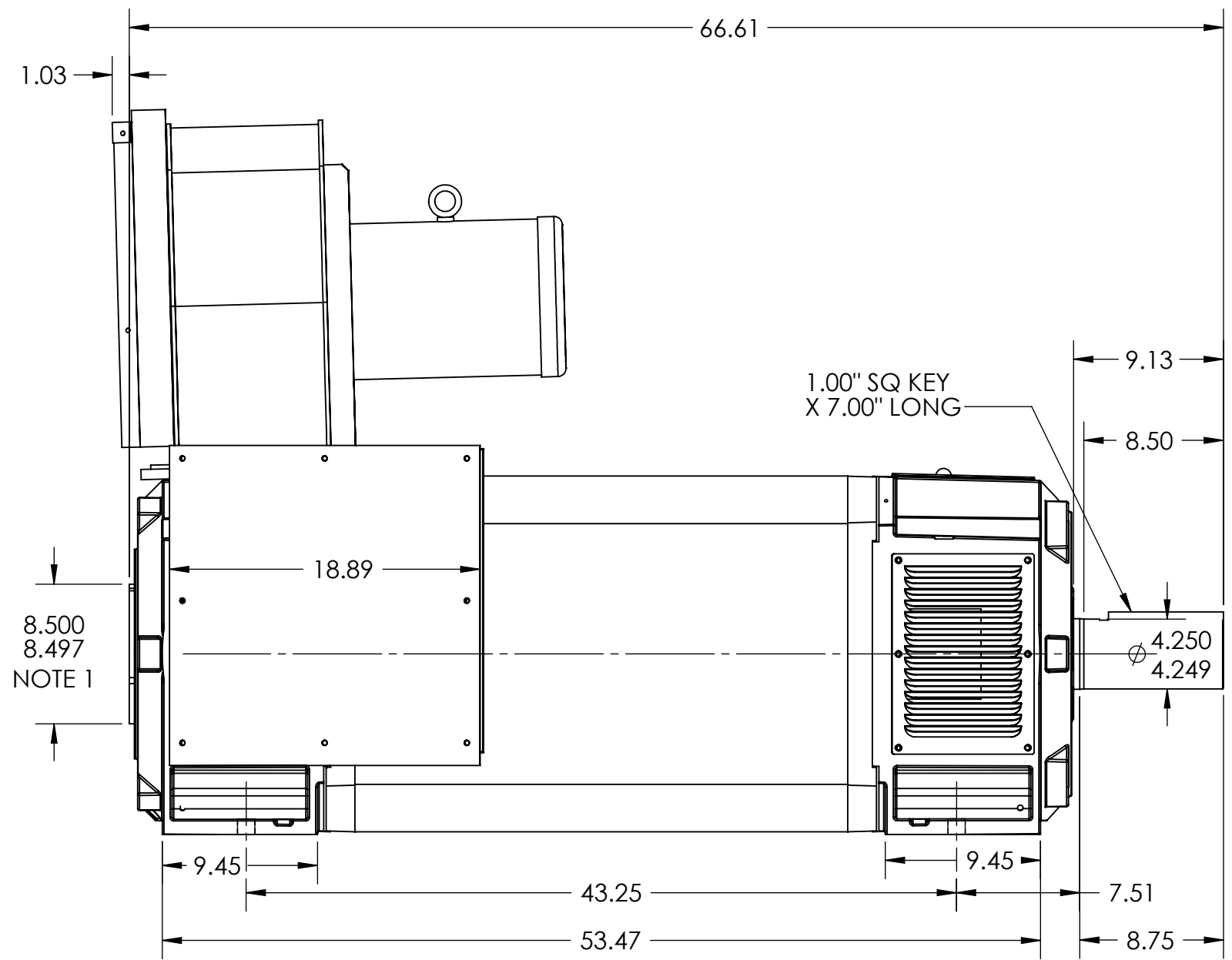
RPM-AC VARIABLE SPEED ALTERNATING CURRENT MOTOR
RL4473Z

ENCLOSURE: DRIP PROOF

MOUNTING: FOOT

COOLING: FORCE VENTILATED

ACCESSORIES: PROVISIONS FOR
TACHOMETER MOUNTING
ONLY WHEN SPECIFIED



MOTOR WEIGHT: 4440 LBS.
MAY VARY 15% FOR NON-STANDARD RATINGS AND/OR
ACCESSORIES.

REFER TO 616779-55 FOR SPECIFIED TACHOMETER DIMENSIONS

IF MOUNTING DETAILS ARE REQUIRED, CONSULT FACTORY.

CUSTOMER IS RESPONSIBLE FOR DETERMINING THAT THE PRODUCT WILL PERFORM SUITABLY IN THE INTENDED APPLICATION

REV. DESC: CORRECT O.D.E. FLANGE TOLERANCE			
REV: D	VERSION: 04	REVISED: 07:52:16 11/22/2022	TDR: 000001200321
MODEL NO. 617603-001			REF: -
BY: USWATUR			B

BALDOR - RELIANCE®

DIM SHT, RL4473Z ,DPFV, STD

NOTE 1: O.D.E. C-FACE & TACHOMETER MOUNTING
1/2-13 TAP, 1.00 DEEP, ON A $\phi 7.25$ B.C.
FACE RUNOUT AND ECCENTRICITY 0.004 MAX. T.I.R.

NOTE 2: SHAFT HEIGHT WILL NOT BE EXCEEDED
SHIMS UP TO 0.06 INCHES IN THICKNESS ARE USUALLY
REQUIRED FOR COUPLED OR GEARED MACHINES

NOTE 3: REMOVEABLE COVER PLATE FOR CUSTOMER DRILLING

NOTE 4: TERMINAL BOX CAN BE LOCATED F1 OR F2 IF SPECIFIED.

617603-001

617603-001