

ABB BALDOR RELIANCE III



Customer information packet IDDRPM447004

700HP, 1785RPM, 3PH, NAHZ, L4429, DPG-FV, FOOT

Specifications

Enclosure	DPFV
Frame	L4429
Frame Material	Exposed Laminations
Frequency	90.00 Hz
Output @ Frequency	700.000 HP @ 90 HZ
Phase	3
Synchronous Speed @ Frequency	1800 RPM @ 90 HZ
Voltage @ Frequency	460.0 V @ 90 HZ
Agency Approvals	CCSA US
Auxiliary Box	NO AUXILLARY BOX
Base Indicator	Rigid
Bearing Grease Type	No Grease
Current @ Voltage	870.000 A @ 460.0 V
Duty Rating	CONT
Enclosure Modification	FORCE VENT
Feedback Device	NO FEEDBACK
Frame Prefix	L
Heater Indicator	No Heater
High Voltage Full Load Amps	870.0 a
Insulation Class	H
Motor Standards	NEMA
Mounting Arrangement	F1
Overall Length	55.63 IN
Product Family	General Industrial
Pulley End Bearing Type	Ball
Pulley Face Code	Standard
Service Factor	1.00
Shaft Diameter	4.250 IN
Shaft Ground Indicator	Shaft Grounding
Shaft Rotation	Reversible
Speed	1785 rpm
Thermal Device - Bearing	None

Part Detail

Revision	A
Type	AC
Mech. spec.	
Base	
Status	INA/A
Elec. spec.	L1483A
Layout	615917-001
Eff. date	09-25-2018
CD Diagram	422927-001
Poles	06
Leads	
Proprietary	False
Created date	04-09-2015

Thermal Device - Winding

Normally Closed Thermostat

Nameplate

000613006MY

	DUTY	HP	RPM	AMPS	VOLTS	HZ	
	CONT	700	1785		870	460	90
	CONT	700	2700		833	460	136.1
CAT.NO.	IDDRPM447004		SPEC. NO.		P44L1320		
SER.NO			FR	L 4429	INSUL	H	
PH.	3	MAX SAFE SPEED		2850	AMB.	40	MIN. AMB. -25
DESIGN NO.	L1483A		TYPE		ENCL.	DP	
S.F.	1.00		D.E. BRG.	110BC02J30X			
ENCL MOD	FORCE VENT		O.D.E. BRG.	6222MCVL0241			

REL S.O.	-	VOLTS	460	ENCLOSURE	DPFV	WYE CONN EQ CKT OHMS PER PHASE			
FRAME	RL4429	AMPS	870	MAX SAFE RPM	2850	(AT BASE RATING, 25 °C)			
HP	700	DUTY	CONT	IM (AMPS)	371	R1	.00212	X1	.0357
BASE SPEED	1785	S.F.	1.0	P.F. @NL/FL	.029/.798	R2	.00174	X2	.0483
PHASE/HERTZ	3/90	AMB °C/INSUL	40/H	WK ² (Lb-Ft ²)	150			XM	.711

RATED FULL LOAD DATA

	RPM	HP	TORQUE LB-FT	FUND VOLTS	FREQ-HZ	AMPS
BASE SPEED	1786	700	2058	460	90	870
MAX SPEED	2700	701	1362	460	136.1	834
MIN SPEED	0	0	0	5.60	.6888	870

LOAD PERFORMANCE AT BASE SPEED

	RPM	HP	TORQUE LB-FT	FUND VOLTS	FREQ-HZ	AMPS
NO LOAD	1800	0	0	460	90	364
1/4	1797	175	512	460	90	422
1/2	1793	351	1027	460	90	543
3/4	1790	525	1540	460	90	696
FULL LOAD	1786	700	2058	460	90	870
O/L	1778	1046	3088	460	90	1261

REMARKS :



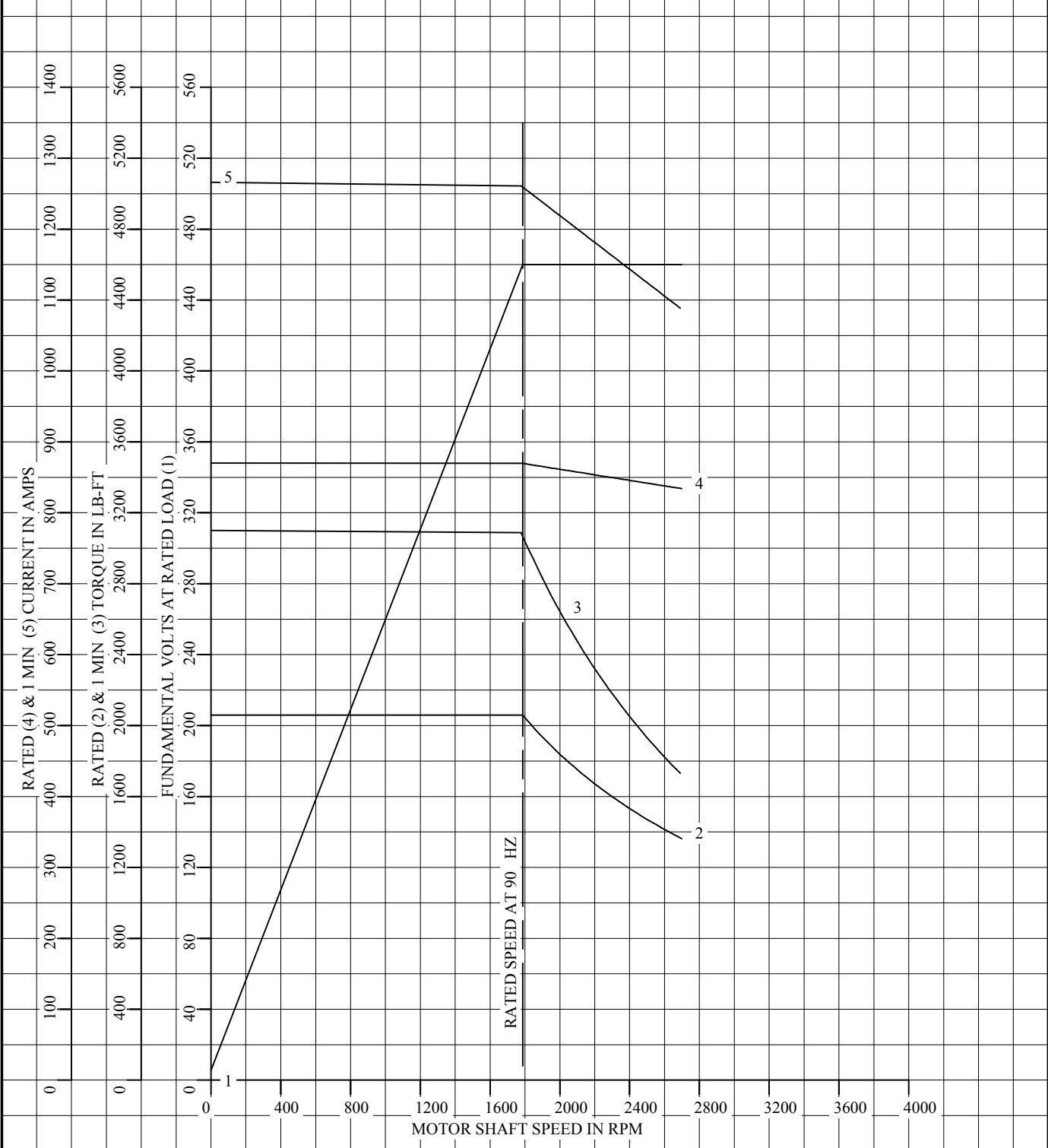
DR. BY B. GRANT
 CK. BY B. GRANT
 APP. BY T. EVON
 DATE 7-19-99

**A-C MOTOR
 PERFORMANCE DATA L1483A**

ISSUE DATE 3-17-15

REL S.O.	-	VOLTS	460	ENCLOSURE	DPFV	WYE CONN EQ CKT OHMS PER PHASE	
FRAME	RL4429	AMPS	870	MAX SAFE RPM	2850	(AT BASE RATING, 25 °C)	
HP	700	DUTY	CONT	IM (AMPS)	371	R1	.00212 X1 .0357
BASE SPEED	1785	S.F.	1.0	P.F. @NL/FL	.029/.798	R2	.00174 X2 .0483
PHASE/HERTZ	3/90	AMB °C/INSUL	40/H	WK ² (Lb-Ft ²)	150		XM .711

VARIABLE SPEED AC MOTOR CURVES



REMARKS: DATA VALID FOR NAMEPLATE SPEED RANGE ONLY



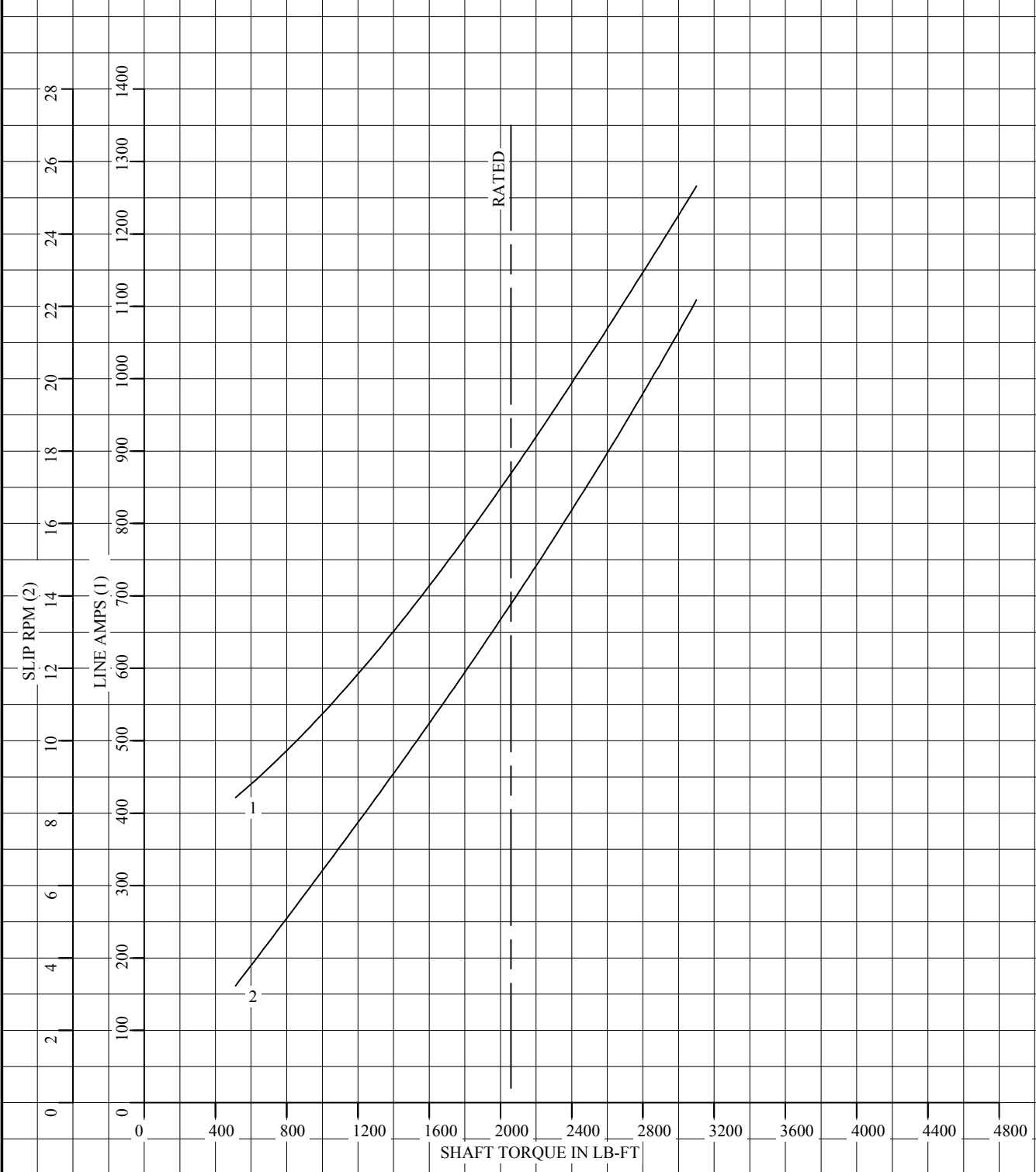
DR. BY B. GRANT
 CK. BY B. GRANT
 APP. BY T. EVON
 DATE 7-19-99

**A-C MOTOR
 PERFORMANCE
 CURVES**

L1483A
 SH 1 OF 2
 ISSUE DATE 3-17-15 Page 6 of 10

REL S.O.	-	VOLTS	460	ENCLOSURE	DPFV	WYE CONN EQ CKT OHMS PER PHASE	
FRAME	RL4429	AMPS	870	MAX SAFE RPM	2850	(AT BASE RATING, 25 °C)	
HP	700	DUTY	CONT	IM (AMPS)	371	R1	.00212 X1 .0357
BASE SPEED	1785	S.F.	1.0	P.F. @NL/FL	.029/.798	R2	.00174 X2 .0483
PHASE/HERTZ	3/90	AMB °C/INSUL	40/H	WK ² (Lb-Ft ²)	150		XM .711

LOAD PERFORMANCE (CONSTANT V/HZ RANGE)



REMARKS:

DATA VALID FOR NAMEPLATE SPEED RANGE ONLY



DR. BY B. GRANT
 CK. BY B. GRANT
 APP. BY T. EVON
 DATE 7-19-99

**A-C MOTOR
 PERFORMANCE
 CURVES**

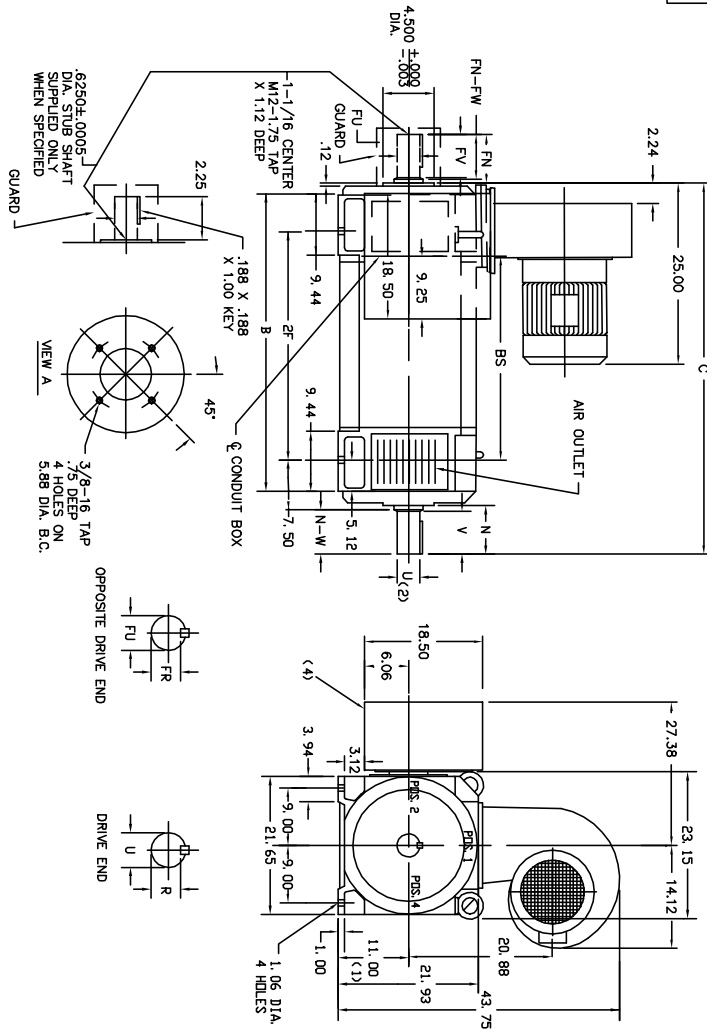
L1483A
 SH 2 OF 2
 ISSUE DATE 3-17-15 Page 7 of 10

615917-001

VARIABLE SPEED ALTERNATING CURRENT MOTORS
RPM AC
 ENCLOSURE: DRIP-PROOF FULLY-GUARDED
 MOUNTING: FOOT
 COOLING: FORCE VENTILATED WITH INTEGRAL BLOWER AND MOTOR
 ACCESSORIES: TACHOMETER PROVISIONS

FRAMES L4429 THRU. L4473

615917-001



FRAME	DRIVE METHOD	C	B	BS	2F	DRIVE END SHAFT AND KEY						OPPOSITE DRIVE END SHAFT AND KEY						WT.		
						N	N-W	U(2)	V	R(3)	SQ.	LGTH.	FN	FN-FW	FU(2)	FV	FR(3)		SQ.	LGTH.
L4429	COUPLED	55.63	42.48	27.75	32.25	9.23	8.75	4.250	8.50	3.690	1.00	7.00	9.23	8.75	4.250	8.50	3.690	1.00	7.00	3004
L4429	BELTED	55.63	42.48	27.75	32.25	9.23	8.75	4.250	8.50	3.944	1.00	7.00	9.23	8.75	4.250	8.50	3.690	1.00	7.00	3004
L4440	COUPLED	58.38	45.23	30.50	35.00	9.23	8.75	4.250	8.50	3.944	1.00	7.00	9.23	8.75	4.250	8.50	3.690	1.00	7.00	3307
L4440	BELTED	58.38	45.23	30.50	35.00	9.23	8.75	4.250	8.50	3.944	1.00	7.00	9.23	8.75	4.250	8.50	3.690	1.00	7.00	3307
L4451	COUPLED	61.13	47.98	33.25	37.75	9.23	8.75	4.250	8.50	3.690	1.00	7.00	9.23	8.75	4.250	8.50	3.690	1.00	7.00	3612
L4451	BELTED	61.13	47.98	33.25	37.75	9.23	8.75	4.250	8.50	3.944	1.00	7.00	9.23	8.75	4.250	8.50	3.690	1.00	7.00	3612
L4461	COUPLED	63.63	50.48	35.75	40.25	9.23	8.75	4.250	8.50	3.690	1.00	7.00	9.23	8.75	4.250	8.50	3.690	1.00	7.00	3889
L4461	BELTED	63.63	50.48	35.75	40.25	9.23	8.75	4.250	8.50	3.944	1.00	7.00	9.23	8.75	4.250	8.50	3.690	1.00	7.00	3889
L4473	COUPLED	66.63	53.48	38.75	43.25	9.23	8.75	4.250	8.50	3.690	1.00	7.00	9.23	8.75	4.250	8.50	3.690	1.00	7.00	4220
L4473	BELTED	66.63	53.48	38.75	43.25	9.23	8.75	4.250	8.50	3.944	1.00	7.00	9.23	8.75	4.250	8.50	3.690	1.00	7.00	4220

TERMINAL BOX CAN BE ROTATED FOR LEAD OUTLET AT TOP, SIDES OR BOTTOM.
 TERMINAL BOX LOCATED ON OPPOSITE SIDE WHEN F-2, V-1, V-4, V-5, V-7,
 OR C-3 MOUNTING IS SPECIFIED. BOX LOCATED ON TOP WHEN SPECIFIED.
 BLOWER ASSEMBLY AND TERMINAL BOX POSITION IS 1/2 IN. FROM SCALE POSITION.
 IF MOUNTING CLEARANCE DETAILS ARE REQUIRED, CONSULT FACTORY.
 MOTOR WEIGHT MAY VARY 15% FOR NON-STANDARD RATINGS AND/OR ACCESSORIES.
 (1) "D" DIMENSION WILL NOT BE EXCEEDED. SHIMS UP TO .06 INCHES IN THICKNESS
 ARE USUALLY REQUIRED FOR COUPLED OR GEARED MACHINES.
 (2) "U" VARIES FROM .000 TO .001
 (3) "R" VARIES FROM .000 TO .015
 (4) REMOVABLE COVER PLATE FOR CUSTOMER DRILLING.
 TERMINAL BOX CAN BE POSITIONED FOR EITHER TOP OR BOTTOM
 CONDUIT ENTRY.

CUSTOMER IS RESPONSIBLE FOR DETERMINING THAT BALDOR'S PRODUCT WILL PERFORM SUITABLY IN THE INTENDED APPLICATION.

REV. DESC: ADD L4473 AND UL4473	VERSION: 02	TDR: 000000521619
REV. LTR: B		REVISED: 04: 05: 09 12/11/2009
FILE: \RGG\00005\298		BY: MGHBM10
MTL: -		

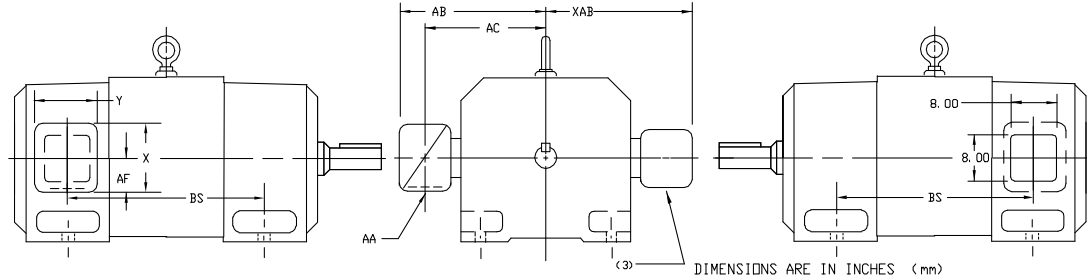
Baldor • Dodge • Reliance

DIM SHEET L440 DPFV W/ TACH PROVISIONS

SH 1 of 1

616779-022

VARIABLE SPEED ALTERNATING CURRENT MOTORS RPM AC
STEEL AND CAST IRON TERMINAL BOX DIMENSIONS
STANDARD SIZE AND ONE SIZE LARGER
AND AUXILIARY TERMINAL BOX DIMENSIONS FOR RTDS
FRAMES L320 THRU L440



AUXILIARY TERMINAL BOX DIMENSIONS	
FRAME SIZE	XAB
L320	13.50
L360	14.50
L400	15.50
L440	21.00

STEEL TERMINAL BOX DIMENSIONS								
FRAME SIZE	MAX. AMPS	AA(1)	STANDARD SIZE				PART NUMBER	
			AB	AC	AF	X		Y
L320	160	2	15.38	11.81	4.25	8.44	7.25	706320-9-D
L320	305	4	17.25	13.12	5.38	10.56	9.00	706320-16-D
L320	500	5	21.00	15.88	6.50	12.10	14.62	702658-1-A
L360	160	2	16.38	12.81	4.25	8.44	7.25	706320-9-D
L360	305	4	18.25	14.12	5.38	10.56	9.00	706320-16-D
L360	500	5	22.00	15.88	6.50	12.10	14.62	702658-1-A

CAST IRON TERMINAL BOX DIMENSIONS								
FRAME SIZE	MAX. AMPS	AA(2)	STANDARD SIZE				PART NUMBER	
			AB	AC	AF	X		Y
L320	140	3	15.75	12.00	3.62	8.00	9.25	706320-12-B
L320	210	4	17.12	12.88	4.12	9.50	10.50	706320-13-A
L320	510	5	21.12	15.88	7.00	12.75	15.00	706320-14-D
L360	140	3	16.75	13.00	3.62	8.00	9.25	706320-12-B
L360	210	4	18.12	13.88	4.12	9.50	10.50	706320-13-A
L360	510	5	22.12	16.88	7.00	12.75	15.00	706320-14-D

MILL CONDUIT BOX DIMENSIONS								
FRAME SIZE	AMPS	AA	AB	AC	AF	X	Y	PART NUMBER
L320	590	(3)	15.47	12.06	4.50	16.00	16.00	706310-3-R
L360	590	(3)	16.47	13.06	4.50	16.00	16.00	706310-3-R
L400	590	(3)	22.50	18.00	4.50	16.00	16.00	706310-3-R
L440	1260	(3)	27.38	19.88	6.06	18.50	18.50	706310-63-E

IEC CONDUIT BOX DIMENSIONS WITH TERMINAL BOARDS								
FRAME NEMA/IEC	AMPS	AA	AB (mm)	AC (mm)	AF (mm)	X (mm)	Y (mm)	PART NUMBER
L320/DL200	800	--	20.06 (510)	17.53 (446)	6.20 (158)	14.39 (366)	14.39 (366)	706310-63-B
L360/DL225	800	--	20.78 (528)	18.25 (464)	6.20 (158)	14.39 (366)	14.39 (366)	706310-63-B
L400/DL250	800	--	21.75 (553)	19.25 (489)	6.20 (158)	14.39 (366)	14.39 (366)	706310-63-B
L440/DL280	1260	--	27.38 (696)	19.88 (505)	6.06 (154)	18.50 (470)	18.50 (470)	706310-63-E

- (1) *AA* CONDUIT.
- (2) *AA* PIPE TAP.
- (3) NO LEAD OUTLET HOLE. CUSTOMER MUST MACHINE HOLE IN TERMINAL BOX FOR CONDUIT AS REQUIRED.

TERMINAL BOX CAN BE ROTATED FOR LEAD OUTLET AT TOP, SIDES OR BOTTOM.
 TERMINAL BOX LOCATED ON OPPOSITE SIDE WHEN F-2, W-1, W-4, W-5, W-7,
 OR C-1 MOUNTING IS SPECIFIED. BOX LOCATED ON TOP WHEN SPECIFIED.
 FOR *X/P* TERMINAL BOX DIMENSIONS SEE 609979-9.
 FOR MILL TYPE TERMINAL BOX DIMENSIONS SEE 609979-10.

CUSTOMER IS RESPONSIBLE FOR DETERMINING THAT BALDOR'S PRODUCT WILL PERFORM SUITABLY IN THE INTENDED APPLICATION.

REV. DESC: LOAD TO BUS	VERSION: 00	TDR: 00000958120
REV. LTR: -	FILE: \RGG\00026\332	REVISED: 03:40:32 12/17/2015
MTL: -	BY: RGGWT	



DIM SHT,L320 THRU L440,AUX C/BOX
SH 1 of 1

616779-022

422927-001



NOTE:
DATA TO BE SIZED
SO THAT IT FITS INTO
MATERIAL DECAL
DIMENSIONS. MAKE
LETTERS & NUMBERS
AS LARGE AS POSSIBLE.

NOTE:
CONNECT ALL LEADS
WITH THE SAME MARKING
TOGETHER WHEN CONNECTING
POWER TO THE MOTOR

MATERIAL: CERAMATIC DGF-P4
PERMA GRIP ADHESIVE

ALL LETTERS, NUMBERS
AND LINES TO BE BLACK
ON WHITE BACKGROUND.

422927-001

REV. DESC: CHANGE BACKGROUND COLOR FROM GOLD TO WHITE			
REV. LTR: B	VERSION: 02	TDR: 00000788708	
FILE: \RGG\00000\203		REVISED: 08:09:29 03/04/2013	
MTL: -		BY: RGGWT	

BALDOR

EXTERNAL CONNECTION LABEL

SH 1 of 1