

ABB BALDOR RELIANCE III

Customer information packet

IDDRPM445006R1

500HP, 1190/2400RPM, 460V, 3PH, DPGFV, RL4461

Specifications

Enclosure	DPFV
Frame	RL4461
Frame Material	Exposed Laminations
Frequency	60.00 Hz
Output @ Frequency	500.000 @ 60 HZ 500.000 HP @ 60 HZ
Phase	3
Synchronous Speed @ Frequency	1200 RPM @ 60 HZ
Voltage @ Frequency	460.0 V @ 60 HZ 460 V @ 60 HZ
Agency Approvals	CCSA US
Ambient Temperature	50 °C
Auxiliary Box	NO AUXILLARY BOX
Base Indicator	Rigid
Bearing Grease Type	Polyrex EM (-20F +300F)
Current @ Voltage	669.000 A @ 460.0 V
Duty Rating	CONT
Enclosure Modification	FORCE VENT
Feedback Device	NO FEEDBACK
Frame Prefix	RL
Heater Indicator	No Heater
High Voltage Full Load Amps	669.0 a
Insulation Class	H
Motor Standards	NEMA
Mounting Arrangement	F1
Overall Length	63.61 IN
Product Family	General Industrial
Pulley End Bearing Type	Ball
Pulley Face Code	Standard
Service Factor	1.00
Shaft Diameter	4.250 IN
Shaft Ground Indicator	Shaft Grounding

Part Detail

Revision	E
Type	AC
Mech. spec.	
Base	
Status	PRD/A
Elec. spec.	L2046A
Layout	617602-001
Eff. date	05-03-2022
CD Diagram	422927-001
Poles	06
Leads	
Proprietary	False
Created date	04-09-2015

Shaft Rotation	Reversible
Speed	1190 rpm
Thermal Device - Bearing	None
Thermal Device - Winding	Normally Closed Thermostat

Nameplate

000613006MY

	DUTY	HP	RPM	AMPS	VOLTS	HZ	
	CONT	500	1190		669	460	60
	CONT	500	2400		604	460	121.1
CAT.NO.	IDDRPM445006R1		SPEC. NO.	P44R1368			
SER.NO		FR	RL 4461	INSUL	H		
PH.	3	MAX SAFE SPEED	2700	AMB.	50	MIN. AMB.	-25
DESIGN NO.	L2046A	TYPE		ENCL.	DP		
S.F.	1.00		D.E. BRG.	110BC02J30X			
ENCL MOD	FORCE VENT		O.D.E. BRG.	6222MCVL0241			

FRAME	RL4461	AMPS	669	MAX SAFE SPEED	2700			
HP	500	DUTY	CONT	IM (AMPS)	368	R1	.00334	X1 .0341
BASE SPEED	1190	S.F.	1.0	P.F. @NL / FL	.029/.746	R2	.00259	X2 .0581
PHASE/HZ	3/60	AMB.°C / INSUL	50/H	WK ² (Lb-Ft ²)	207			XM .717

RATED FULL LOAD DATA

	RPM	HP	TORQUE LB-FT	FUND VOLTS	FREQ-HZ	AMPS
BASE SPEED	1191	500	2206	460	60	669
MAX SPEED	2401	500	1094	460	121.1	604
MIN SPEED	0	0	2206	6.33	.4739	669

LOAD PERFORMANCE AT BASE SPEED

	RPM	HP	TORQUE LB-FT	FUND VOLTS	FREQ-HZ	AMPS
NO LOAD	1200	0	0	460	60	360
1/4	1198	125	548	460	60	395
1/2	1195	250	1100	460	60	462
3/4	1193	375	1651	460	60	559
FULL LOAD	1191	500	2206	460	60	669
0/L	1185	747	3309	460	60	920

REMARKS:

-
-



DRAWN BY: B. GRANT
 CHECKED BY: B. GRANT
 APPROVED BY: T. EVON
 DATE: 2-23-01

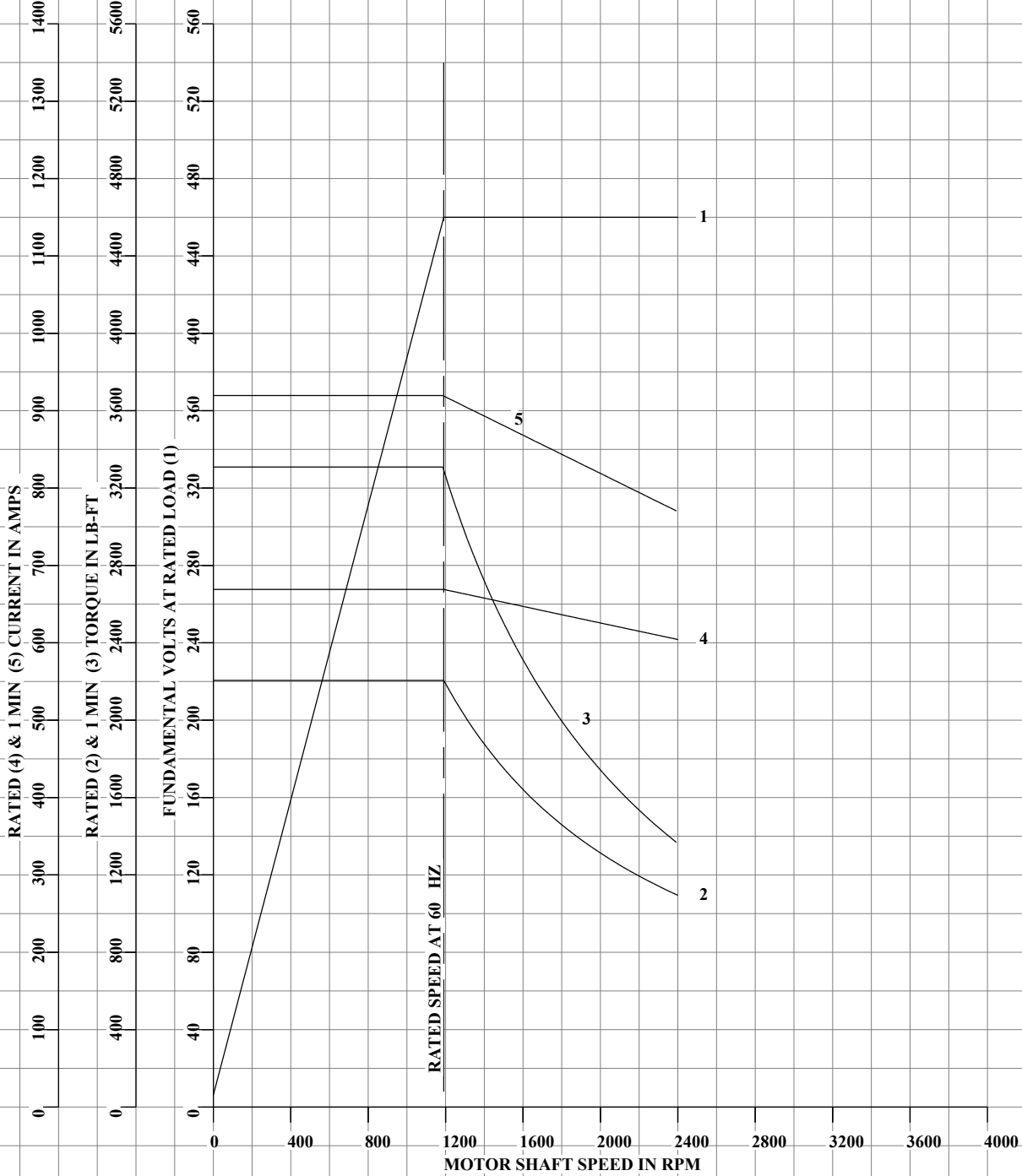
AC MOTOR
PERFORMANCE
DATA

L2046A

ISSUE DATE 8-27-18

FRAME	RL4461	VOLTS	460	ENCLOSURE	DPFV	WYE CONN EQ CRT OHMS PER PHASE (AT BASE RATING, 25°C)		
HP	500	AMPS	669	MAX SAFE SPEED	2700	R1	.00334	X1 .0341
BASE SPEED	1190	DUTY	CONT	IM (AMPS)	368	R2	.00259	X2 .0581
PHASE/HZ	3/60	S.F.	1.0	P.F. @NL / FL	.029/.746			XM .717
		AMB.°C / INSUL	50/H	WK ² (Lb-Ft ²)	207			

VARIABLE SPEED AC MOTOR CURVES



DATA VALID FOR NAMEPLATE SPEED RANGE ONLY



DRAWN BY: **B. GRANT**
 CHECKED BY: **B. GRANT**
 APPROVED BY: **T. EVON**
 DATE: **2-23-01**

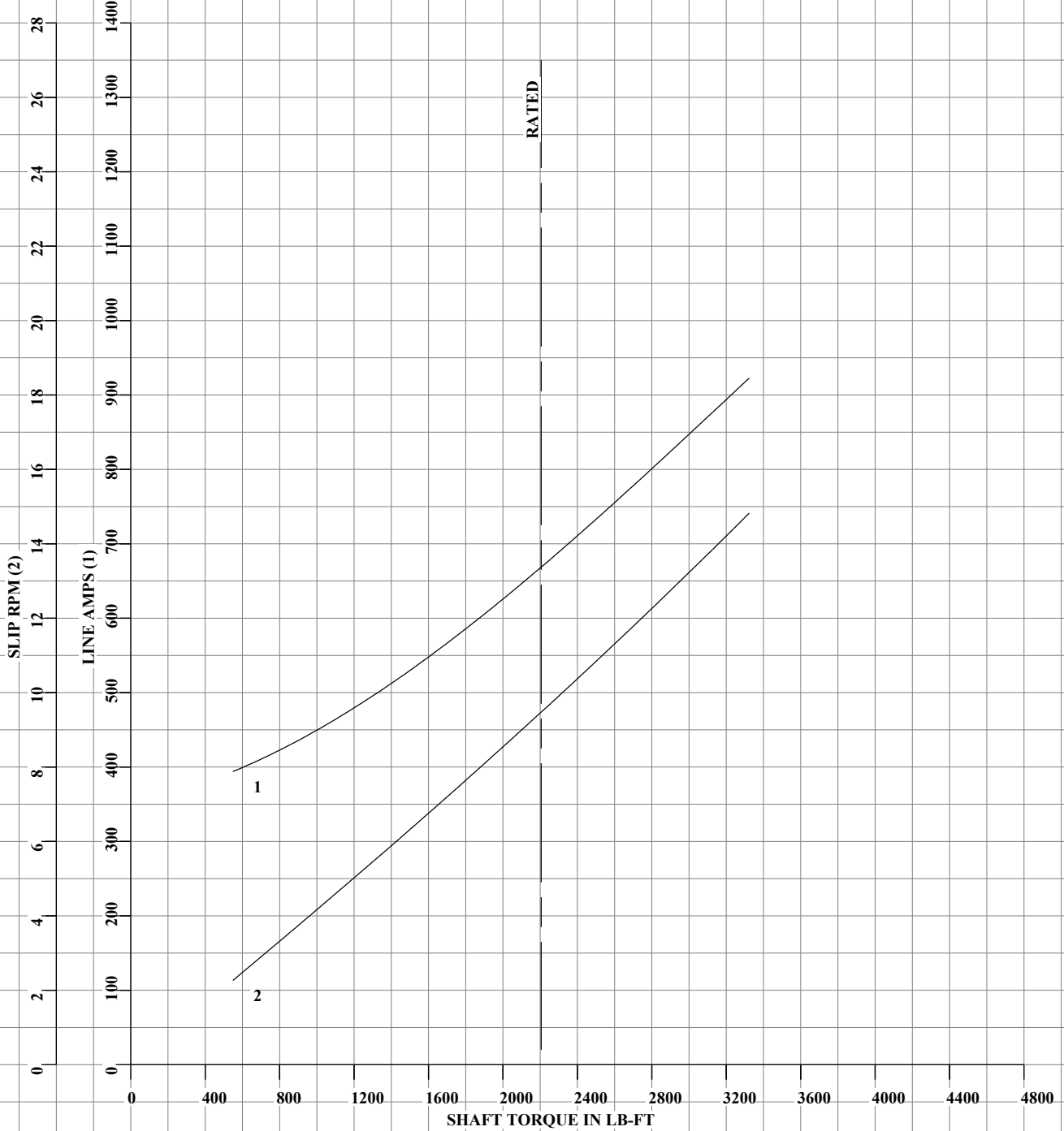
**AC MOTOR
PERFORMANCE
DATA**

L2046A

ISSUE DATE: 8-27-18

FRAME	RL4461	VOLTS	460	ENCLOSURE	DPFV	WYE CONN EQ CRT OHMS PER PHASE (AT BASE RATING, 25°C)		
HP	500	AMPS	669	MAX SAFE SPEED	2700	R1	.00334	X1 .0341
BASE SPEED	1190	DUTY	CONT	IM (AMPS)	368	R2	.00259	X2 .0581
PHASE/HZ	3/60	S.F.	1.0	P.F. @NL / FL	.029/.746			XM .717
		AMB.°C / INSUL	50/H	WK ² (Lb-Ft ²)	207			

LOAD PERFORMANCE (CONSTANT V/HZ RANGE)



DATA VALID FOR NAMEPLATE SPEED RANGE ONLY

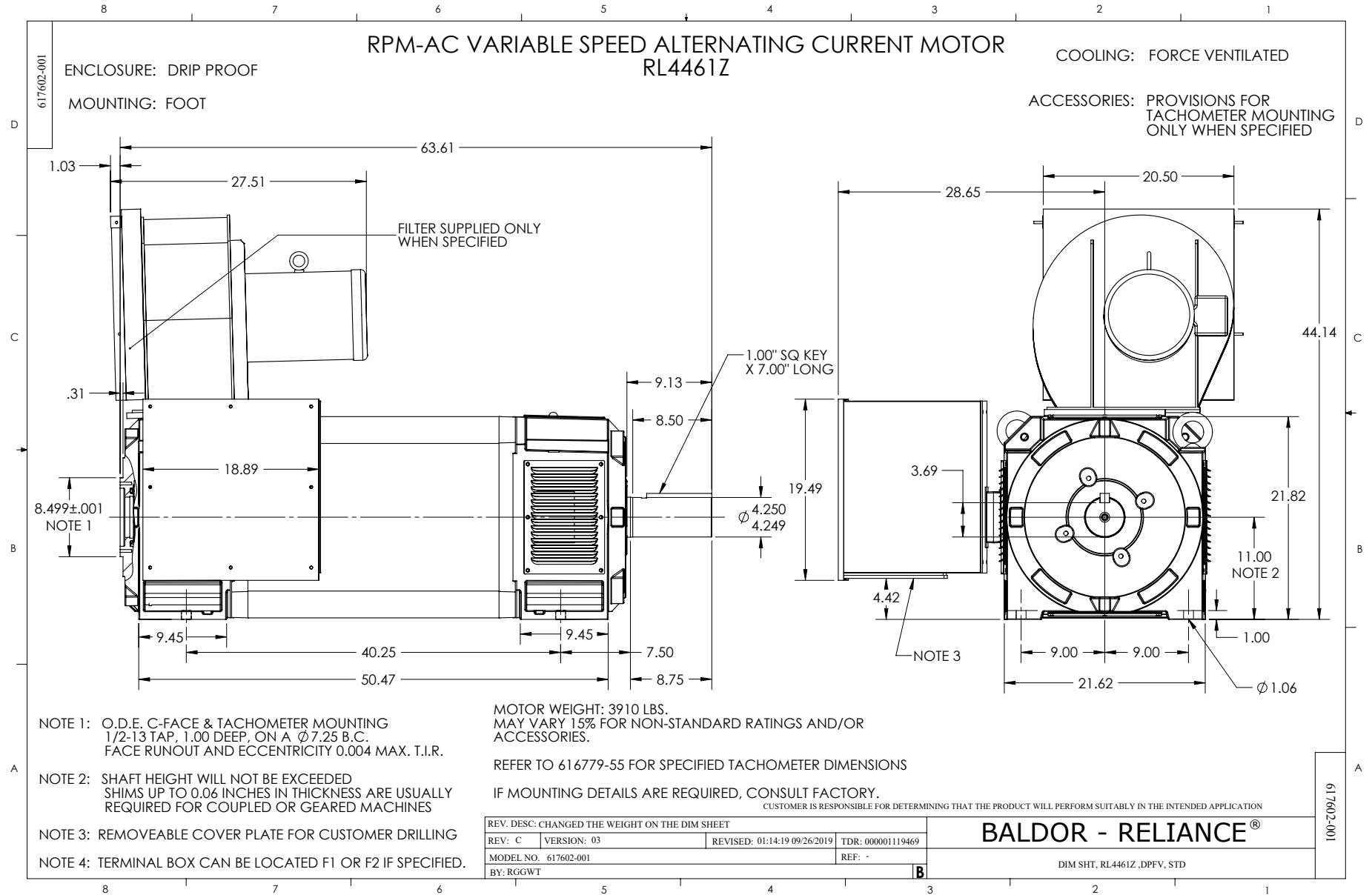


DRAWN BY: B. GRANT
 CHECKED BY: B. GRANT
 APPROVED BY: T. EVON
 DATE: 2-23-01

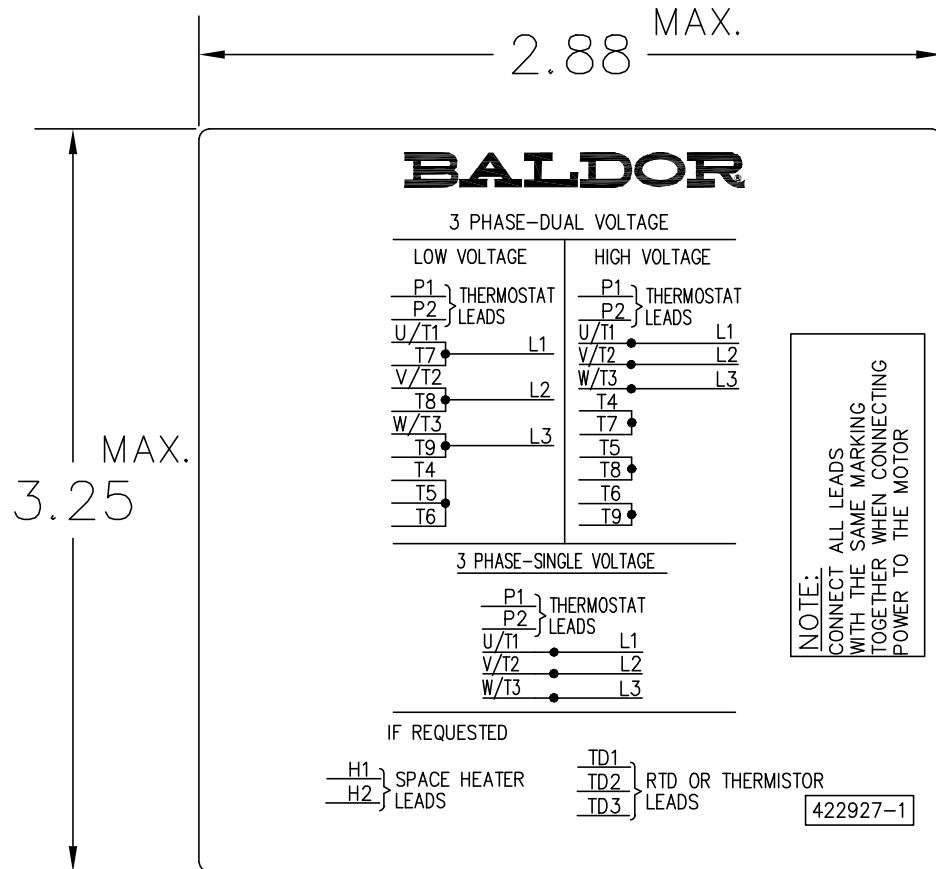
AC MOTOR
 PERFORMANCE
 DATA

L2046A

ISSUE DATE: 8-27-18



422927-001



NOTE:
DATA TO BE SIZED
SO THAT IT FITS INTO
MATERIAL DECAL
DIMENSIONS. MAKE
LETTERS & NUMBERS
AS LARGE AS POSSIBLE.

MATERIAL: CERAMATIC DGF-P4
PERMA GRIP ADHESIVE

ALL LETTERS, NUMBERS
AND LINES TO BE BLACK
ON WHITE BACKGROUND.

422927-001

REV. DESC: CHANGE BACKGROUND COLOR FROM GOLD TO WHITE		
REV. LTR: B	VERSION: 02	TDR: 00000788708
FILE: \RGG\00000\203	REVISED: 08:09:29 03/04/2013	
MTL: -	BY: RGGWT	

BALDOR

EXTERNAL CONNECTION LABEL

SH 1 of 1