

ABB BALDOR RELIANCE III

Customer information packet

IDDRPM4410004R2ED

1000HP, 1750, 460V, RL4473, DPFV, F1

Copyright © All product information within this document is subject to ABB Motors and Mechanical Inc. copyright © protection, unless otherwise noted.

7/8/2026 8:36:15 PM

Specifications

Enclosure	DPFV
Frame	RL4473Z
Frame Material	Exposed Laminations
Frequency	90.00 Hz
Output @ Frequency	1000.000 HP @ 90 HZ
Phase	3
Synchronous Speed @ Frequency	1800 RPM @ 90 HZ
Voltage @ Frequency	460.0 V @ 90 HZ
Agency Approvals	CCSA US
Auxiliary Box	NO AUXILLARY BOX
Base Indicator	Rigid
Bearing Grease Type	Polyrex EM (-20F +300F)
Current @ Voltage	1196.000 A @ 460.0 V
Duty Rating	CONT
Feedback Device	NO FEEDBACK
Frame Prefix	RL
Heater Indicator	No Heater
High Voltage Full Load Amps	1196.0 a
Insulation Class	H
IP Rating	NONE
Motor Standards	NEMA
Mounting Arrangement	F1
Overall Length	67.64 IN
Product Family	Extruder
Pulley End Bearing Type	Ball
Pulley Face Code	Standard
Service Factor	1.00
Shaft Diameter	4.250 IN
Shaft Ground Indicator	Shaft Grounding
Shaft Rotation	Reversible
Speed	1785 rpm
Starting Method	Full Voltage

Part Detail

Revision	A
Type	AC
Mech. spec.	
Base	
Status	PRD/A
Elec. spec.	L9466A
Layout	617603-001
Eff. date	03-23-2023
CD Diagram	422927-001
Poles	06
Leads	
Proprietary	False
Created date	02-28-2023

Thermal Device - Bearing

None

Thermal Device - Winding

Thermostat And RTD

Nameplate

000613006ABS

	DUTY	HP	RPM	AMPS	VOLTS	HZ	
	CONT	1000	1785	1196	460	90	
	CONT	1000	2550	1180	460	128.6	
CAT.NO.	IDDRPM4410004R2ED		SPEC. NO.	R44-A000-0227			
SER.NO		FR	RL4473Z	INSUL	H		
PH.	3	MAX SAFE SPEED	2700	AMB.	40	MIN. AMB.	-25
DESIGN NO.	L9466A	TYPE		ENCL.	DPG-FV		
S.F.	1.00		D.E. BRG.	110BC02J30X			
ENCL MOD		O.D.E. BRG.	6222/C3VL0241				
	IDDRPM4410004R2ED				IP23		

FRAME	RL4473	AMPS	1196	MAX SAFE SPEED	2700			
HP	1000	DUTY	CONT	IM (AMPS)	443	R1	.00170	X1 .0248
BASE SPEED	1785	S.F.	1.0	P.F. @NL / FL	.020/.824	R2	.00126	X2 .0371
PHASE/HZ	3/90	AMB.°C / INSUL	40/H	WK ² (Lb-Ft ²)	233			XM .595

RATED FULL LOAD DATA

	RPM	HP	TORQUE LB-FT	FUND VOLTS	FREQ-HZ	AMPS
BASE SPEED	1786	1000	2941	460	90	1197
MAX SPEED	2550	1001	2060	460	128.6	1180
MIN SPEED	0	0	2941	6.02	.7073	1197

LOAD PERFORMANCE AT BASE SPEED

	RPM	HP	TORQUE LB-FT	FUND VOLTS	FREQ-HZ	AMPS
NO LOAD	1800	0	0	460	90	443
1/4	1797	250	732	460	90	523
1/2	1793	500	1466	460	90	710
3/4	1790	750	2201	460	90	940
FULL LOAD	1786	1000	2941	460	90	1197
0/L	1766	1979	5882	460	90	2423

REMARKS:



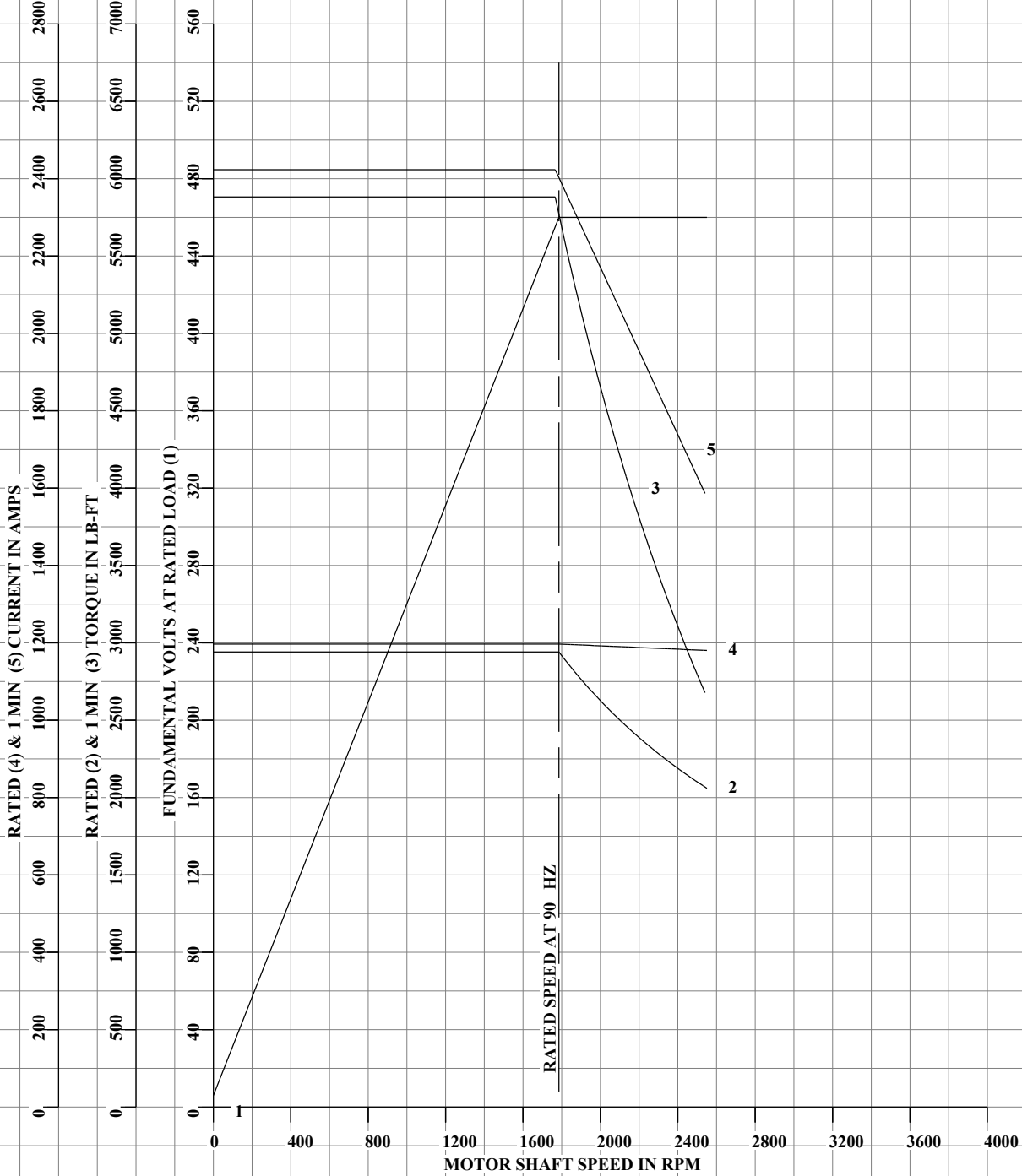
DRAWN BY: A. BROOKINS
 CHECKED BY: R.GARCIA
 APPROVED BY: J. MARTIN
 DATE: 3-21-23

**AC MOTOR
PERFORMANCE
DATA**

L9466A
 ISSUE DATE 3-21-23

FRAME	RL4473	VOLTS	460	ENCLOSURE	DPFV	WYE CONN EQ CKT OHMS PER PHASE (AT BASE RATING, 25°C)			
HP	1000	AMPS	1196	MAX SAFE SPEED	2700	R1	.00170	X1	.0248
BASE SPEED	1785	DUTY	CONT	IM (AMPS)	443	R2	.00126	X2	.0371
PHASE/HZ	3/90	S.F.	1.0	P.F. @NL / FL	.020/.824			XM	.595
		AMB.°C / INSUL	40/H	WK ² (Lb-Ft ²)	233				

VARIABLE SPEED AC MOTOR CURVES



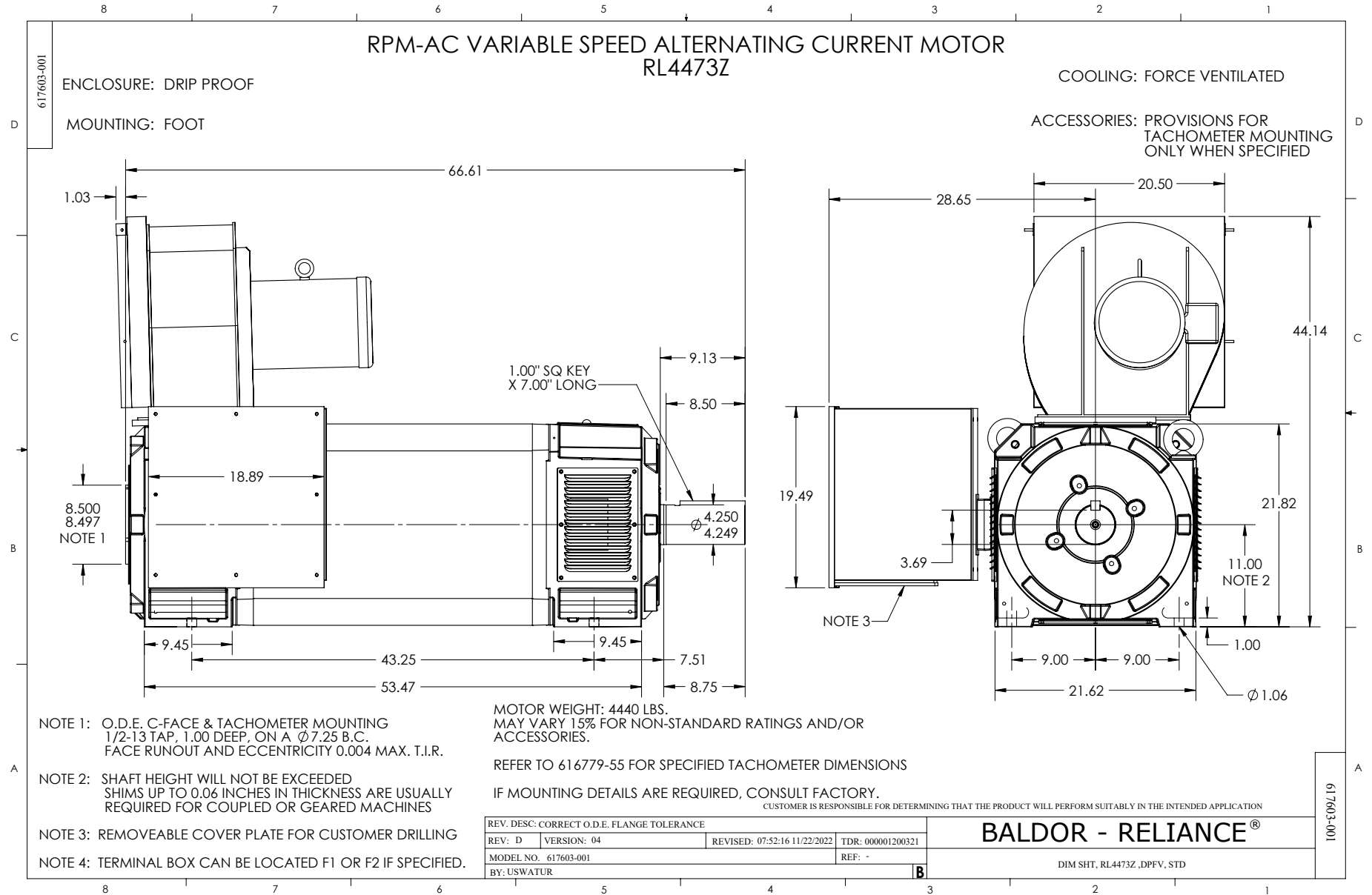
DATA VALID FOR NAMEPLATE SPEED RANGE ONLY



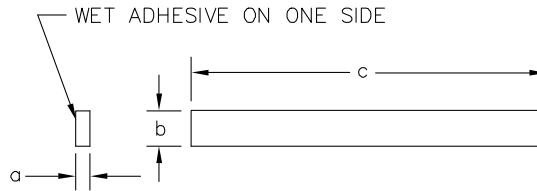
DRAWN BY: A. BROOKINS
 CHECKED BY: R.GARCIA
 APPROVED BY: J. MARTIN
 DATE: 3-21-23

**AC MOTOR
PERFORMANCE
DATA**

L9466A
 ISSUE DATE: 3-21-23



065564-004



SYM	MAKE FROM 065564-004	a	b	c	REMARKS
A	X	1/8	5/8	24*	TERMBOX & CVR 180AT-250AT
B	X	1/8	5/8	37 1/2*	TERMBOX & CVR 280AT-320AT
C	Y	1/4	5/8	44 1/2 Δ	FILTER TO HOUSING GASKET
D	X	1/8	5/8	170"	TEAO HEAT EXCH.
E	Y	1/4	5/8	72" Δ	TERMBOX & CVR

SYM	MAT'L SPEC	a	b	c
X	46024-XV	1/8	5/8	* 50' ROLL; WET ADHESIVE ON ONE SIDE
Y	46024-XV	1/4	5/8	* 50' ROLL; WET ADHESIVE ON ONE SIDE

Δ RELIANCE WILL CUT AND MOUNT ON FILTER HOUSING PER ASSEMBLY DRAWING 603989-2.

* PROD. NOTE: WHEN ORDERING THRU PURCHASING ORDER AS 50 FT. ROLLS, WET ADHESIVE ON ONE SIDE. RELIANCE WILL CUT AND MOUNT ON COVER. PER INSTRUCTIONS ON COVER DRAWINGS.

065564-004

CUSTOMER IS RESPONSIBLE FOR DETERMINING THAT BALDOR'S PRODUCT WILL PERFORM SUITABLY IN THE INTENDED APPLICATION.

REV. DESC: CHANGE DESCRIPTION ON TITLE BLOCK		
REV. LTR: C	VERSION: 03	TDR: 000000571980
FILE: \RGG\00000\220	REVISED: 10:54:04 12/16/2010	BY: RGGWT
MTL: -		

BALDOR
GASKET,STRIP,CLOSED CELL NEOPRENE
SH 1 of 1

422927-001



NOTE:
DATA TO BE SIZED SO THAT IT FITS INTO MATERIAL DECAL DIMENSIONS. MAKE LETTERS & NUMBERS AS LARGE AS POSSIBLE.

MATERIAL: CERAMATIC DGF-P4
PERMA GRIP ADHESIVE

ALL LETTERS, NUMBERS AND LINES TO BE BLACK ON WHITE BACKGROUND.

422927-001

REV. DESC: CHANGE BACKGROUND COLOR FROM GOLD TO WHITE		
REV. LTR: B	VERSION: 02	TDR: 00000788708
FILE: \RGG\00000\203	REVISED: 08:09:29 03/04/2013	
MTL: -	BY: RGGWT	

BALDOR

EXTERNAL CONNECTION LABEL

SH 1 of 1