

BALDOR • RELIANCE

Customer information packet

IDDRPM4410004R2

1000HP, 1750, 460V, RL4473, DPFV, F1

Specifications

Enclosure	DPFV
Frame	RL4473Z
Frame Material	Exposed Laminations
Frequency	90.00 Hz
Output @ Frequency	1000.000 HP @ 90 HZ
Phase	3
Synchronous Speed @ Frequency	1800 RPM @ 90 HZ
Voltage @ Frequency	460.0 V @ 90 HZ
Agency Approvals	CCSA US
Auxillary Box	No Auxillary Box
Base Indicator	Rigid
Bearing Grease Type	Polyrex EM (-20F +300F)
Current @ Voltage	1196.000 A @ 460.0 V
Duty Rating	CONT
Feedback Device	ENCODER
Frame Prefix	RL
Heater Indicator	No Heater
High Voltage Full Load Amps	1196.0 a
Insulation Class	H
IP Rating	NONE
Motor Standards	NEMA
Mounting Arrangement	F1
Overall Length	67.64 IN
Product Family	General Industrial
Pulley End Bearing Type	Ball
Pulley Face Code	Standard
Service Factor	1.00
Shaft Diameter	4.250 IN
Shaft Ground Indicator	Shaft Grounding
Shaft Rotation	Reversible
Speed	1785 rpm
Starting Method	Full Voltage

Part detail

Revision	A
Type	AC
Mech. spec.	
Base	
Status	PRD/A
Elec. spec.	L9466A
Layout	617603-001
Eff. date	03-23-2023
CD Diagram	422927-001
Poles	06
Leads	
Proprietary	False
Created date	02-23-2023

Thermal Device - Bearing

None

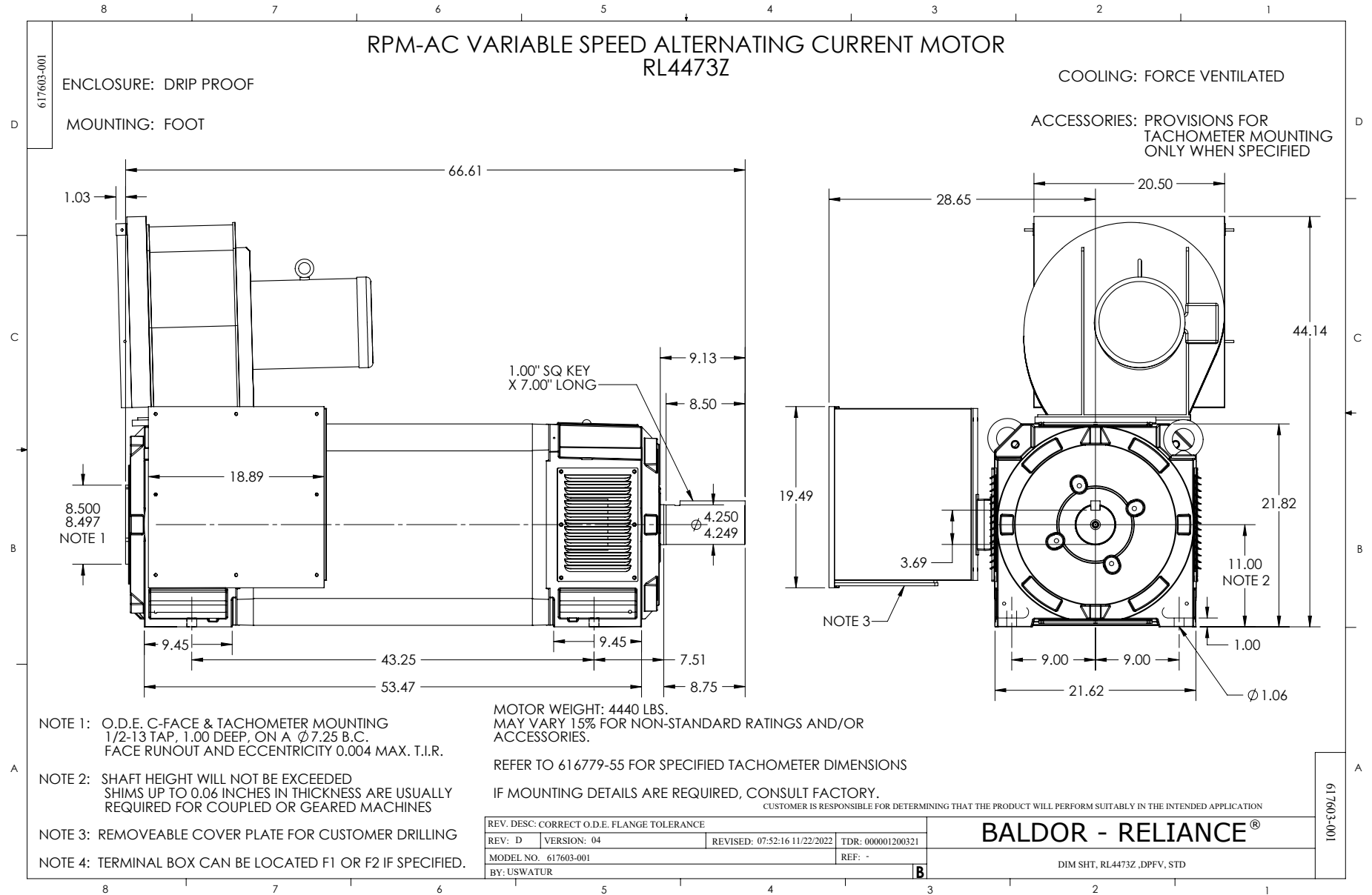
Thermal Device - Winding

Thermostat And RTD

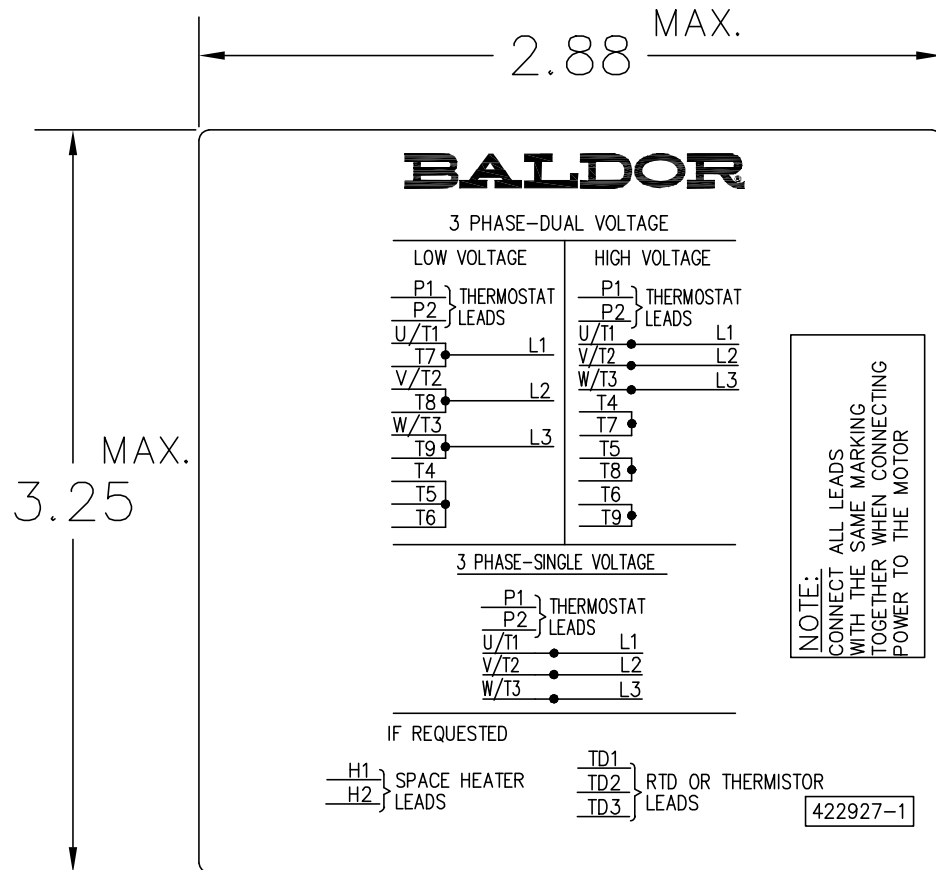
Nameplate

000613006MY

	DUTY	HP	RPM	AMPS	VOLTS	HZ	
	CONT	1000	1785	1196	460	90	
	CONT	1000	2550	1180	460	128.6	
CAT.NO.	IDDRPM4410004R2		SPEC. NO.		R44-A000-0225		
SER.NO		FR	RL4473Z	INSUL	H		
PH.	3	MAX SAFE SPEED		2700	AMB.	40	MIN. AMB. -25
DESIGN NO.	L9466A	TYPE			ENCL.	DPG-FV	
S.F.	1.00		D.E. BRG.		110BC02J30X		
ENCL MOD		O.D.E. BRG.		6222/C3VL0241			
	IP23						



422927-001



NOTE:
DATA TO BE SIZED
SO THAT IT FITS INTO
MATERIAL DECAL
DIMENSIONS. MAKE
LETTERS & NUMBERS
AS LARGE AS POSSIBLE.

NOTE:
CONNECT ALL LEADS
WITH THE SAME MARKING
TOGETHER WHEN CONNECTING
POWER TO THE MOTOR

MATERIAL: CERAMATIC DGF-P4
PERMA GRIP ADHESIVE

ALL LETTERS, NUMBERS
AND LINES TO BE BLACK
ON WHITE BACKGROUND.

422927-001

REV. DESC: CHANGE BACKGROUND COLOR FROM GOLD TO WHITE		
REV. LTR: B	VERSION: 02	TDR: 00000788708
FILE: \RGG\00000\203	REVISED: 08:09:29 03/04/2013	
MTL: -	BY: RGGWT	

BALDOR

EXTERNAL CONNECTION LABEL

SH 1 of 1