

**BALDOR • RELIANCE**

---

**Customer information packet**  
**IDDRPM405004R2ED**

500HP, 1750, 460V, RL4034, DPFV, F1

## Specifications

Enclosure	DPFV
Frame	RL4034Z
Frame Material	Exposed Laminations
Frequency	60.00 Hz
Output @ Frequency	500.000 HP @ 60 HZ
Phase	3
Synchronous Speed @ Frequency	1800 RPM @ 60 HZ
Voltage @ Frequency	460.0 V @ 60 HZ
Agency Approvals	CCSA US
Auxillary Box	No Auxillary Box
Base Indicator	Rigid
Bearing Grease Type	Polyrex EM (-20F +300F)
Current @ Voltage	559.000 A @ 460.0 V
Duty Rating	CONT
Feedback Device	NO FEEDBACK
Frame Prefix	RL
Heater Indicator	No Heater
High Voltage Full Load Amps	559.0 a
Insulation Class	H
IP Rating	NONE
Motor Standards	NEMA
Mounting Arrangement	F1
Overall Length	57.12 IN
Product Family	Extruder
Pulley End Bearing Type	Ball
Pulley Face Code	Standard
Service Factor	1.00
Shaft Diameter	3.624 IN
Shaft Ground Indicator	Shaft Grounding
Shaft Rotation	Reversible
Speed	1778 rpm
Starting Method	Full Voltage

## Part detail

Revision	A
Type	AC
Mech. spec.	
Base	
Status	PRD/A
Elec. spec.	L9460A
Layout	619654-001
Eff. date	03-23-2023
CD Diagram	422927-001
Poles	04
Leads	
Proprietary	False
Created date	03-01-2023

**Thermal Device - Bearing**

None

**Thermal Device - Winding**

Thermostat And RTD

---

**Nameplate**

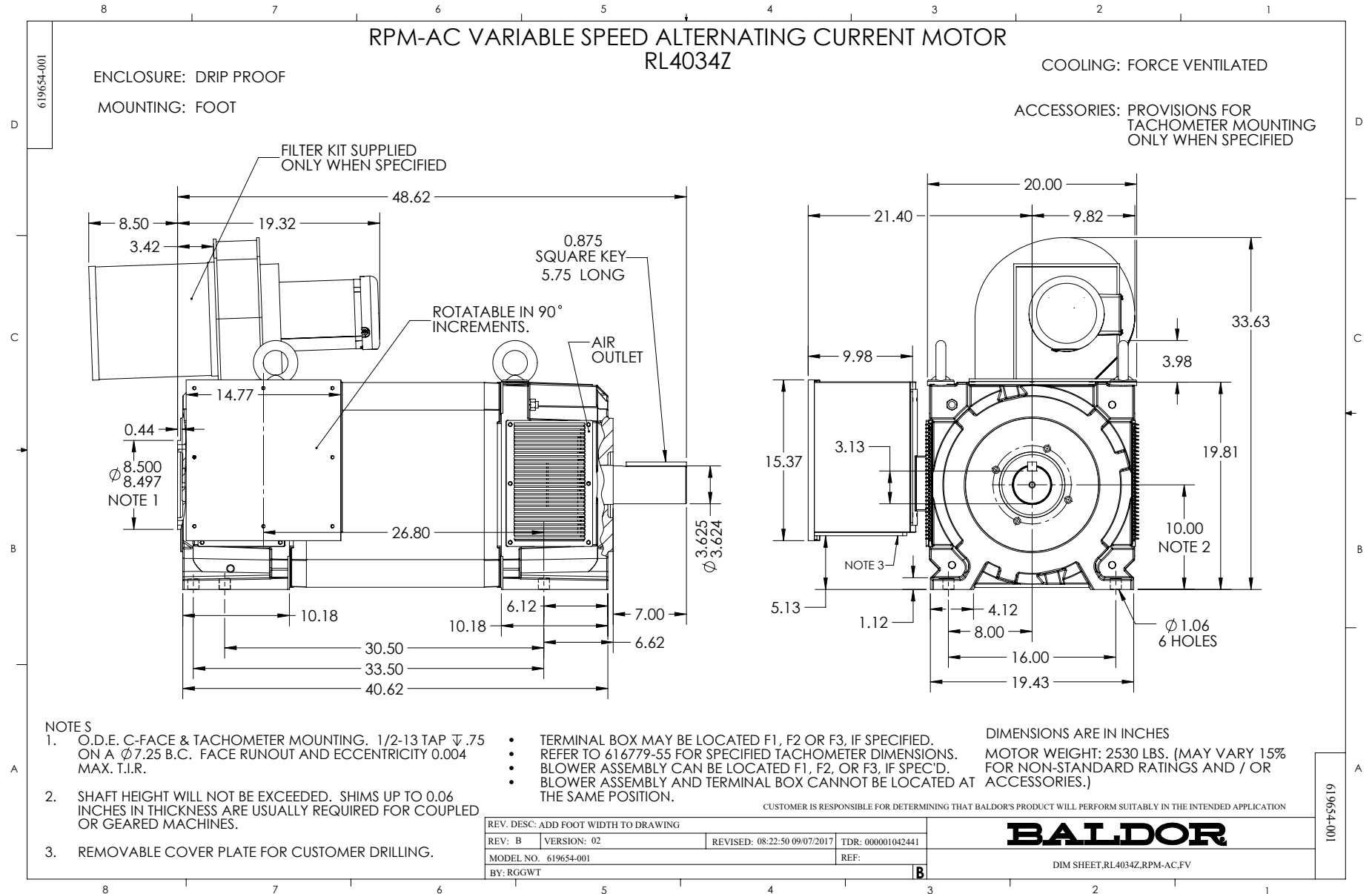
**000613006ABS**

	<b>DUTY</b>	<b>HP</b>	<b>RPM</b>	<b>AMPS</b>	<b>VOLTS</b>	<b>HZ</b>	
	CONT	500	1778	559	460		60
	CONT	500	2400	553	460		81
<b>CAT.NO.</b>	IDDRPM405004R2ED		<b>SPEC. NO.</b>	R40-A000-0309			
<b>SER.NO</b>		<b>FR</b>	RL4034Z	<b>INSUL</b>	H		
<b>PH.</b>	3	<b>MAX SAFE SPEED</b>	3750	<b>AMB.</b>	40	<b>MIN. AMB.</b>	-25
<b>DESIGN NO.</b>	L9460A	<b>TYPE</b>		<b>ENCL.</b>	DPG-FV		
<b>S.F.</b>	1.00		<b>D.E. BRG.</b>	95BC02J30X			
<b>ENCL MOD</b>		<b>O.D.E. BRG.</b>	6316/C3VL0241				
	IP23						



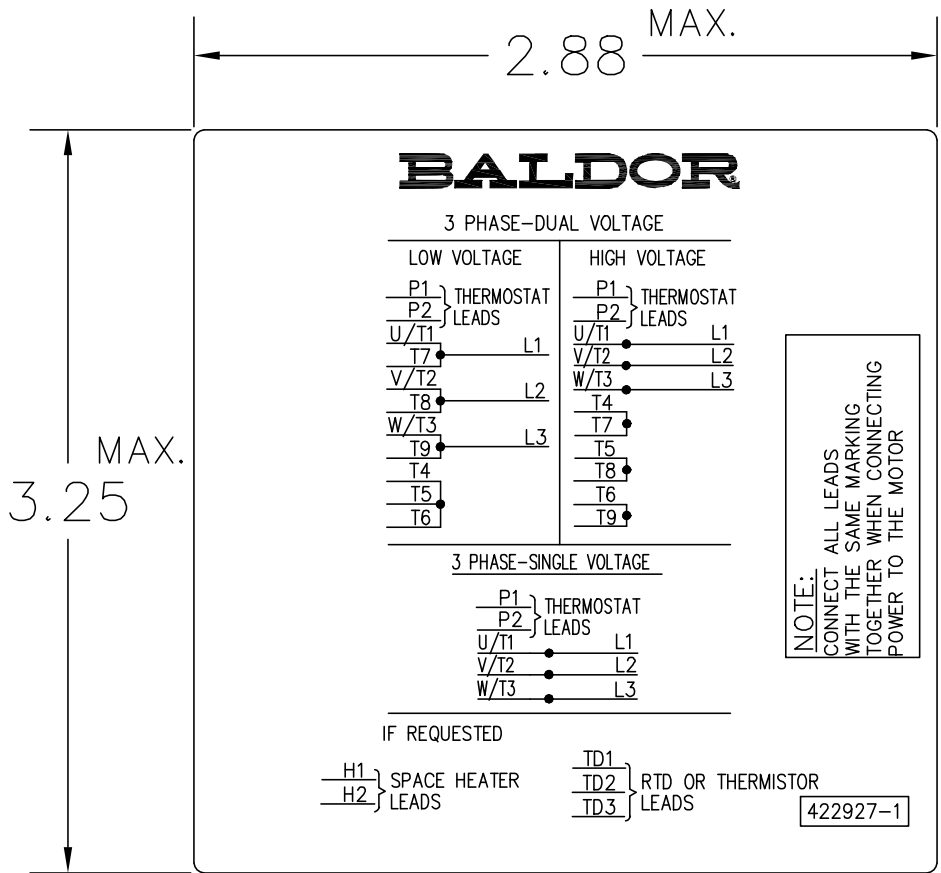








422927-001



NOTE:  
DATA TO BE SIZED  
SO THAT IT FITS INTO  
MATERIAL DECAL  
DIMENSIONS. MAKE  
LETTERS & NUMBERS  
AS LARGE AS POSSIBLE.

MATERIAL: CERAMATIC DGF-P4  
PERMA GRIP ADHESIVE

ALL LETTERS, NUMBERS  
AND LINES TO BE BLACK  
ON WHITE BACKGROUND.

NOTE:  
CONNECT ALL LEADS  
WITH THE SAME MARKING  
TOGETHER WHEN CONNECTING  
POWER TO THE MOTOR

422927-1

422927-001

REV. DESC: CHANGE BACKGROUND COLOR FROM GOLD TO WHITE			
REV. LTR: B	VERSION: 02	TDR: 00000788708	
FILE: \RGG\00000\203	REVISED: 08:09:29 03/04/2013		
MTL: -	BY: RGGWT		

**BALDOR**

EXTERNAL CONNECTION LABEL

SH 1 of 1