

RPM-AC VARIABLE SPEED ALTERNATING CURRENT MOTOR RL4034Z

COOLING: FORCE VENTILATED

ENCLOSURE: DRIP PROOF

MOUNTING: FOOT

ACCESSORIES: PROVISIONS FOR
TACHOMETER MOUNTING
ONLY WHEN SPECIFIED

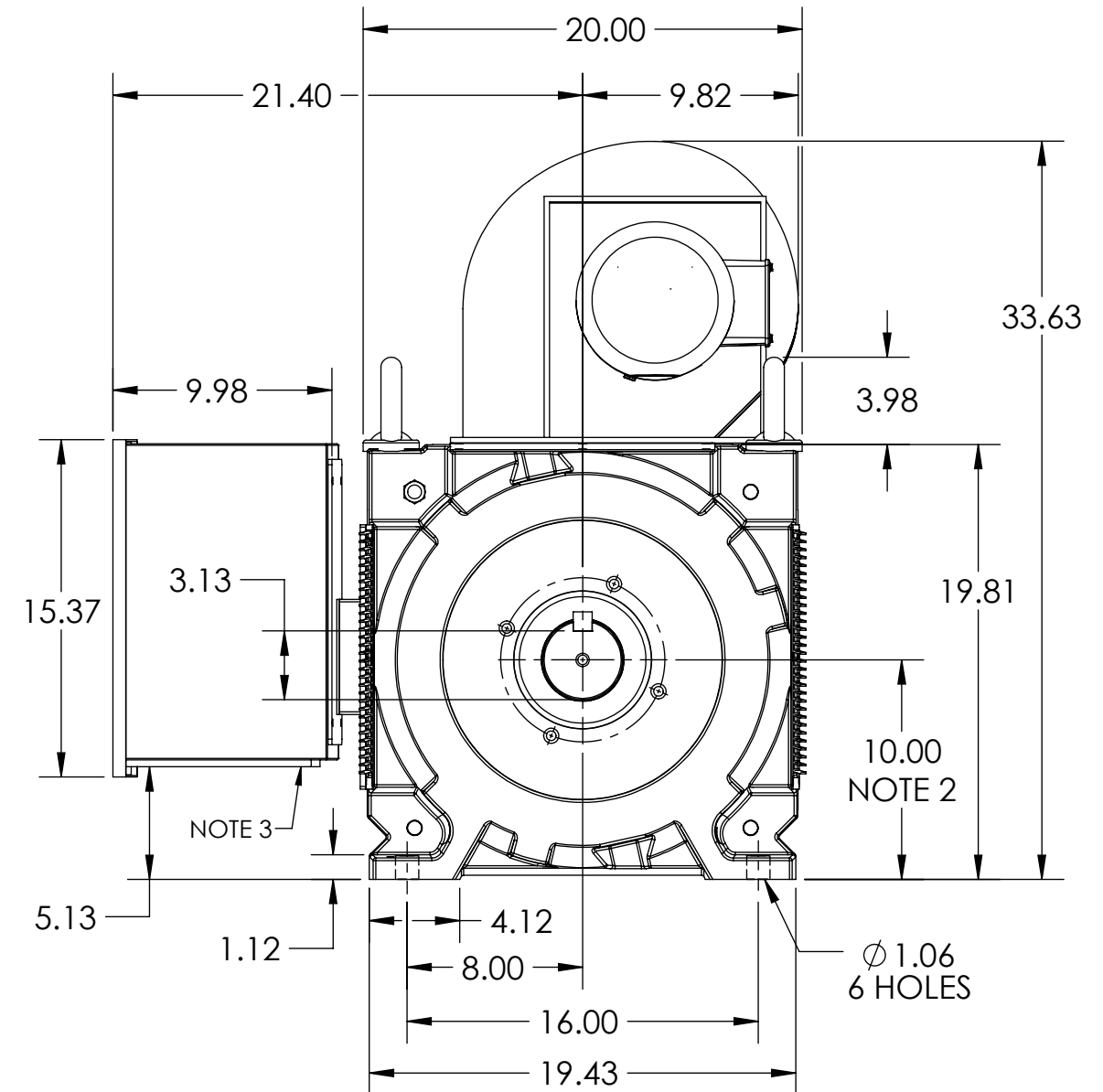
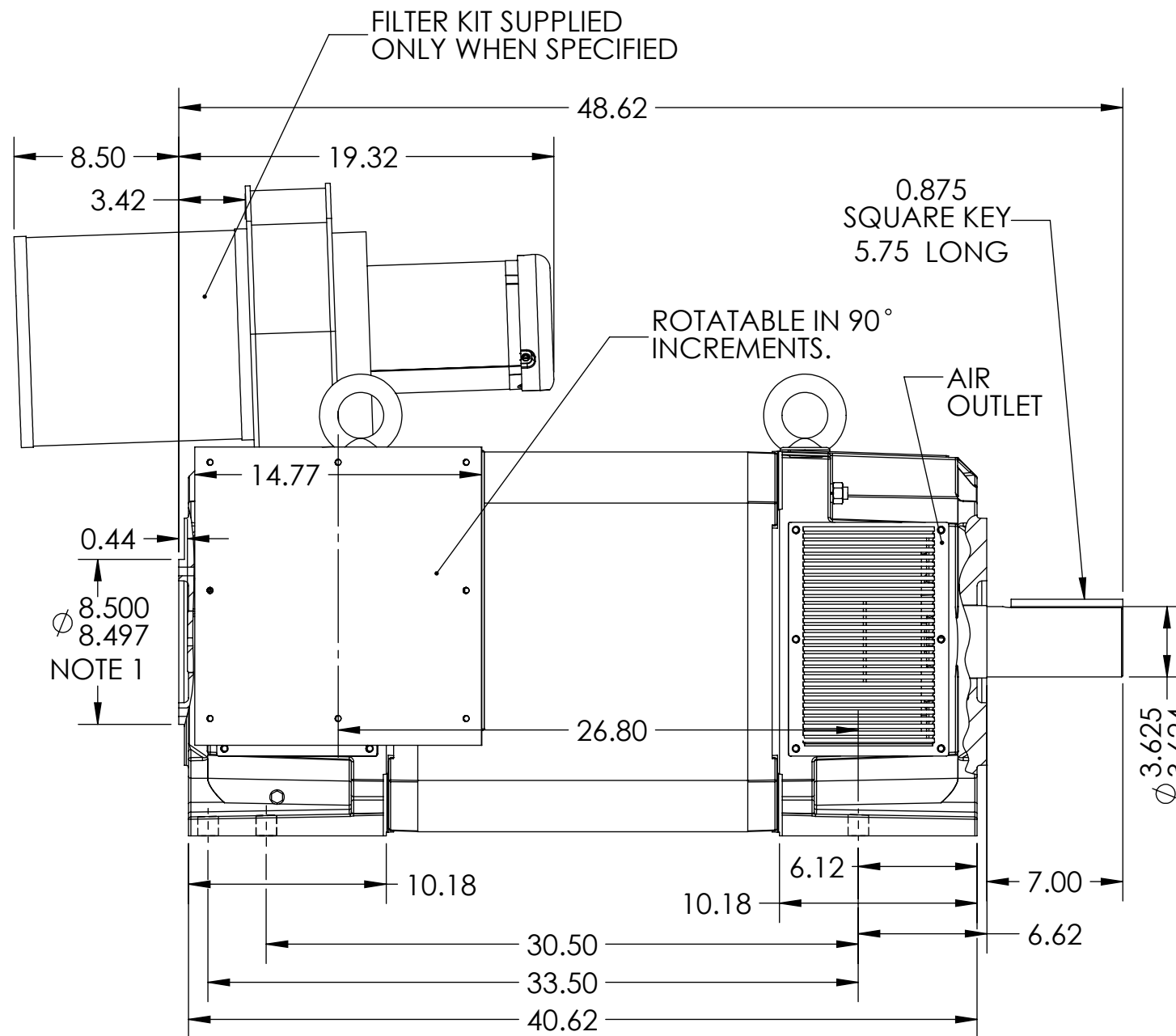
619654-001

D

C

B

A



NOTES

- O.D.E. C-FACE & TACHOMETER MOUNTING. 1/2-13 TAP ∇ .75 ON A ϕ 7.25 B.C. FACE RUNOUT AND ECCENTRICITY 0.004 MAX. T.I.R.
- SHAFT HEIGHT WILL NOT BE EXCEEDED. SHIMS UP TO 0.06 INCHES IN THICKNESS ARE USUALLY REQUIRED FOR COUPLED OR GEARED MACHINES.
- REMOVABLE COVER PLATE FOR CUSTOMER DRILLING.

- TERMINAL BOX MAY BE LOCATED F1, F2 OR F3, IF SPECIFIED.
- REFER TO 616779-55 FOR SPECIFIED TACHOMETER DIMENSIONS.
- BLOWER ASSEMBLY CAN BE LOCATED F1, F2, OR F3, IF SPEC'D.
- BLOWER ASSEMBLY AND TERMINAL BOX CANNOT BE LOCATED AT THE SAME POSITION.

DIMENSIONS ARE IN INCHES

MOTOR WEIGHT: 2530 LBS. (MAY VARY 15% FOR NON-STANDARD RATINGS AND / OR ACCESSORIES.)

CUSTOMER IS RESPONSIBLE FOR DETERMINING THAT BALDOR'S PRODUCT WILL PERFORM SUITABLY IN THE INTENDED APPLICATION

REV. DESC: ADD FOOT WIDTH TO DRAWING			
REV: B	VERSION: 02	REVISED: 08:22:50 09/07/2017	TDR: 000001042441
MODEL NO. 619654-001			REF:
BY: RGGWT			B

BALDOR

DIM SHEET,RL4034Z,RPM-AC,FV

619654-001