

BALDOR® • RELIANCE™

Customer information packet

IDDRPM363504R2

350HP, 1750, 460V, RL3614, DPFV, F1

Specifications

Enclosure	DPFV
Frame	RL3614Z
Frame Material	Exposed Laminations
Frequency	60.00 Hz
Output @ Frequency	350.000 HP @ 60 HZ
Phase	3
Synchronous Speed @ Frequency	1800 RPM @ 60 HZ
Voltage @ Frequency	460.0 V @ 60 HZ
Agency Approvals	CCSA US
Auxillary Box	No Auxillary Box
Base Indicator	Rigid
Bearing Grease Type	Polyrex EM (-20F +300F)
Current @ Voltage	398.000 A @ 460.0 V
Duty Rating	CONT
Feedback Device	ENCODER
Frame Prefix	RL
Heater Indicator	No Heater
High Voltage Full Load Amps	398.0 a
Insulation Class	H
IP Rating	NONE
Motor Standards	NEMA
Mounting Arrangement	F1
Overall Length	52.70 IN
Product Family	General Industrial
Pulley End Bearing Type	Ball
Pulley Face Code	Standard
Service Factor	1.00
Shaft Diameter	2.874 IN
Shaft Ground Indicator	Shaft Grounding
Shaft Rotation	Reversible
Speed	1777 rpm
Starting Method	Full Voltage

Part detail

Revision	B
Type	AC
Mech. spec.	
Base	
Status	PRD/A
Elec. spec.	L9457A
Layout	619684-001
Eff. date	03-23-2023
CD Diagram	422927-001
Poles	04
Leads	
Proprietary	False
Created date	02-22-2023

Thermal Device - Bearing

None

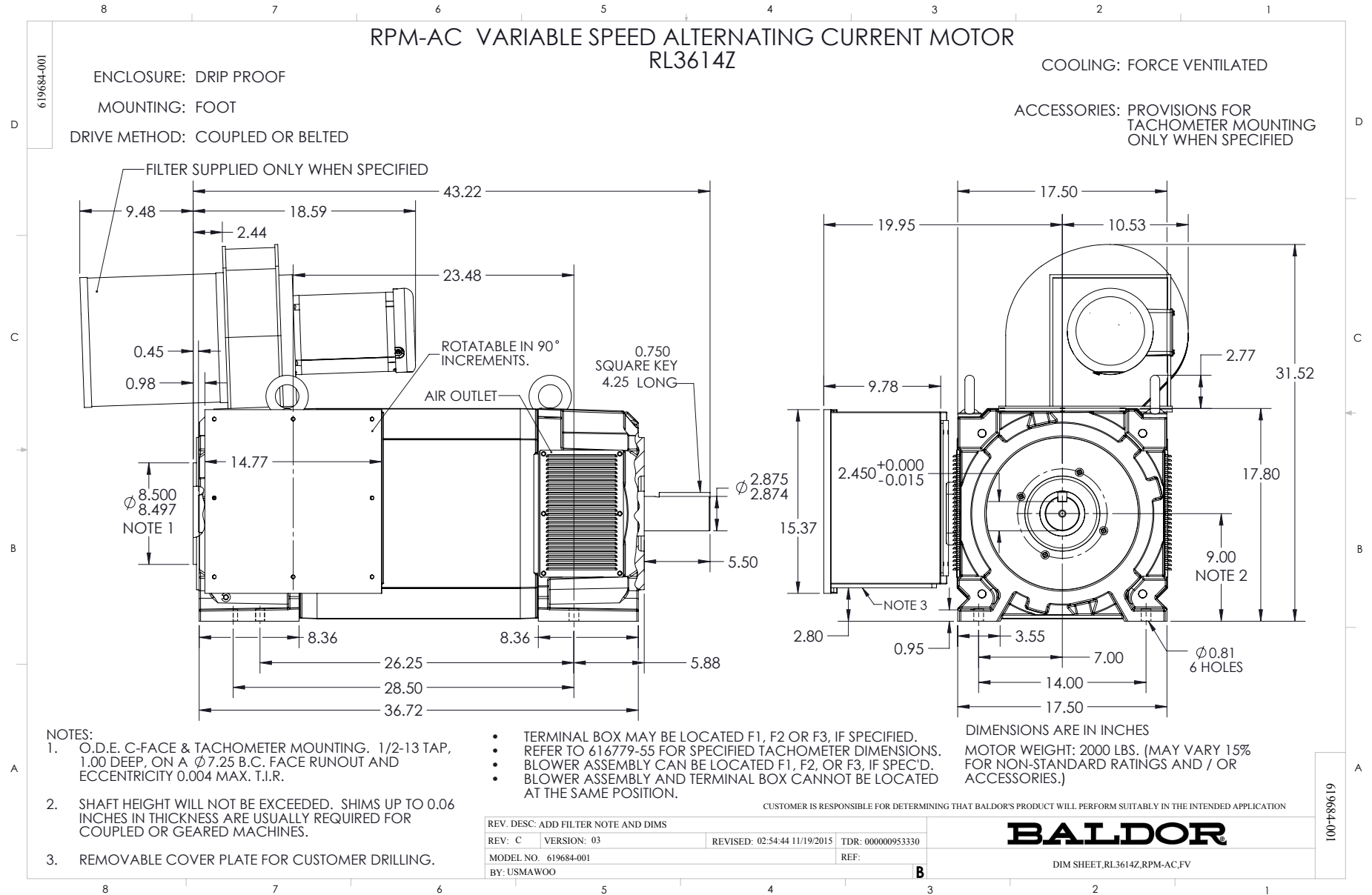
Thermal Device - Winding

Normally Closed Thermostat

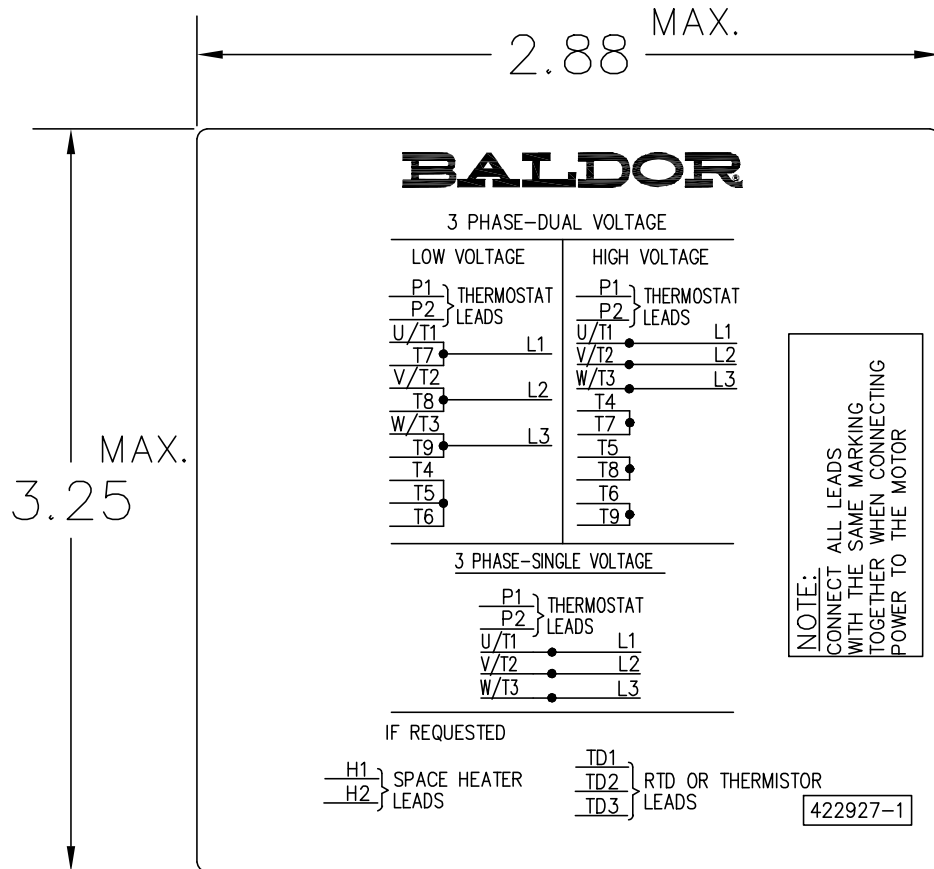
Nameplate

000613006MY

	DUTY	HP	RPM	AMPS	VOLTS	HZ	
	CONT	350	1777	398	460		60
	CONT	350	2221	391	460		75
	CONT	350	2960	401	460		100
CAT.NO.	IDDRPM363504R2		SPEC. NO.	R36-A000-0265			
SER.NO		FR	RL3614Z	INSUL	H		
PH.	3	MAX SAFE SPEED	3750	AMB.	40	MIN. AMB.	-25
DESIGN NO.	L9457A	TYPE		ENCL.	DPG-FV		
S.F.	1.00		D.E. BRG.	95BC02J30X			
ENCL MOD		O.D.E. BRG.	80BC03J30X				
	IP23						



422927-001



NOTE:
DATA TO BE SIZED
SO THAT IT FITS INTO
MATERIAL DECAL
DIMENSIONS. MAKE
LETTERS & NUMBERS
AS LARGE AS POSSIBLE.

MATERIAL: CERAMATIC DGF-P4
PERMA GRIP ADHESIVE

ALL LETTERS, NUMBERS
AND LINES TO BE BLACK
ON WHITE BACKGROUND.

422927-001

REV. DESC: CHANGE BACKGROUND COLOR FROM GOLD TO WHITE		
REV. LTR: B	VERSION: 02	TDR: 00000788708
FILE: \RGG\00000\203	REVISED: 08:09:29 03/04/2013	
MTL: -	BY: RGGWT	

BALDOR

EXTERNAL CONNECTION LABEL

SH 1 of 1