

ABB BALDOR RELIANCE III

Customer information packet IDDRPM363006R1

300HP, 1175/2000RPM, 460V, 3PH, DPGFV, RL3614

Specifications

Enclosure	DPFV
Frame	RL3614
Frame Material	Exposed Laminations
Frequency	40.00 Hz
Output @ Frequency	300.000 @ 40 HZ 300.000 HP @ 40 HZ
Phase	3
Synchronous Speed @ Frequency	1200 RPM @ 40 HZ
Voltage @ Frequency	460.0 V @ 40 HZ 460 V @ 40 HZ
Agency Approvals	CCSA US
Auxiliary Box	NO AUXILLARY BOX
Base Indicator	Rigid
Bearing Grease Type	Polyrex EM (-20F +300F)
Current @ Voltage	352.000 A @ 460.0 V
Duty Rating	CONT
Enclosure Modification	FORCE VENT
Feedback Device	NO FEEDBACK
Frame Prefix	RL
Heater Indicator	No Heater
High Voltage Full Load Amps	352.0 a
Insulation Class	H
Motor Standards	NEMA
Mounting Arrangement	F1
Overall Length	43.22 IN
Product Family	General Industrial
Pulley End Bearing Type	Ball
Pulley Face Code	C-Face
Service Factor	1.00
Shaft Diameter	2.874 IN
Shaft Ground Indicator	Shaft Grounding
Shaft Rotation	Reversible

Part Detail

Revision	E
Type	AC
Mech. spec.	
Base	
Status	PRD/A
Elec. spec.	L6195A
Layout	619684-001
Eff. date	05-03-2022
CD Diagram	422927-001
Poles	04
Leads	
Proprietary	False
Created date	04-09-2015

Speed	1175 rpm
Thermal Device - Bearing	None
Thermal Device - Winding	Normally Closed Thermostat

Nameplate

000613006MY

	DUTY	HP	RPM	AMPS	VOLTS	HZ	
	CONT	300	1175		352	460	40
	CONT	300	2000		351	460	68.3
CAT.NO.	IDDRPM363006R1		SPEC. NO.		P36R1318		
SER.NO			FR	RL 3614	INSUL	H	
PH.	3	MAX SAFE SPEED		3750	AMB.	40	MIN. AMB. -25
DESIGN NO.	L6195A		TYPE		ENCL.	DP	
S.F.	1.00		D.E. BRG.		95BC02J30X		
ENCL MOD	FORCE VENT		O.D.E. BRG.		80BC03J30X		

REL S.O.	-	VOLTS	460	ENCLOSURE	DPFV	WYE CONN EQ CKT OHMS PER PHASE			
FRAME	RL3614	AMPS	353	MAX SAFE RPM	3750	(AT BASE RATING, 25 °C)			
HP	300	DUTY	CONT	IM (AMPS)	118	R1	.0137	X1	.0894
BASE SPEED	1175	S.F.	1.0	P.F. @NL/FL	.037/.870	R2	.0107	X2	.0845
PHASE/HERTZ	3/40	AMB °C/INSUL	40/H	WK ² (Lb-Ft ²)	45			XM	2.34

RATED FULL LOAD DATA

	RPM	HP	TORQUE LB-FT	FUND VOLTS	FREQ-HZ	AMPS
BASE SPEED	1175	300	1341	460	40	353
MAX SPEED	2001	300	787	460	68.3	351
MIN SPEED	0	0	1341	15.4	.847	353

LOAD PERFORMANCE AT BASE SPEED

	RPM	HP	TORQUE LB-FT	FUND VOLTS	FREQ-HZ	AMPS
NO LOAD	1200	0	0	460	40	115
1/4	1194	75.0	330	460	40	144
1/2	1188	150	664	460	40	201
3/4	1182	225	1000	460	40	273
FULL LOAD	1175	300	1341	460	40	353
O/L	1158	444	2012	460	40	534

REMARKS: TYPICAL DATA
CORRELATED DATA

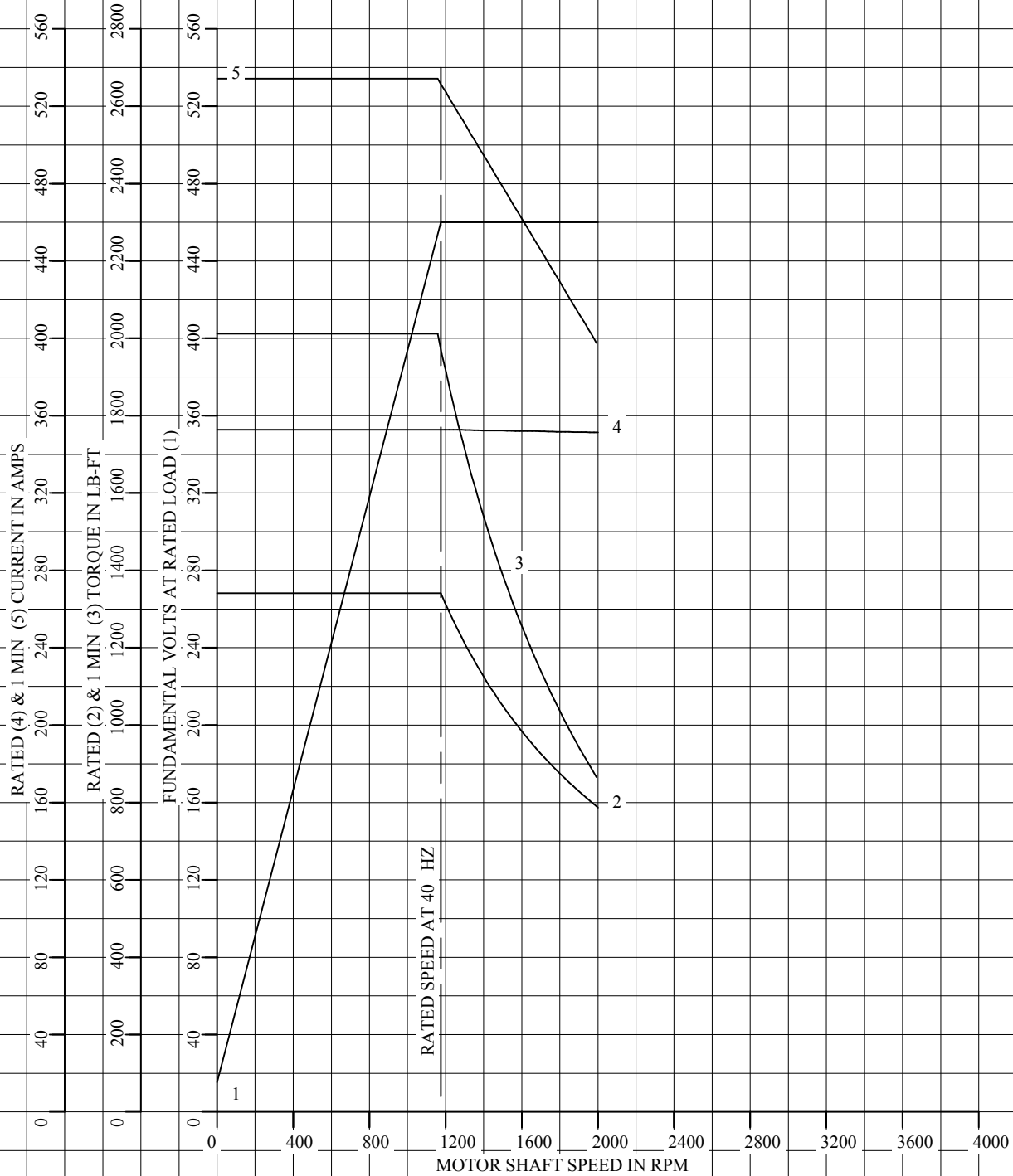


DR. BY K. GREEN
 CK. BY B. GRANT
 APP. BY J. MARTIN
 DATE 06-18-14

**A-C MOTOR
PERFORMANCE DATA** L6195A
 ISSUE DATE 6-18-14

REL S.O.	-	VOLTS	460	ENCLOSURE	DPFV	WYE CONN EQ CKT OHMS PER PHASE	
FRAME	RL3614	AMPS	353	MAX SAFE RPM	3750	(AT BASE RATING, 25 °C)	
HP	300	DUTY	CONT	IM (AMPS)	118	R1	.0137 X1 .0894
BASE SPEED	1175	S.F.	1.0	P.F. @NL/FL	.037/.870	R2	.0107 X2 .0845
PHASE/HERTZ	3/40	AMB °C/INSUL	40/H	WK ² (Lb-Ft ²)	45		XM 2.34

CORRELATED DATA
VARIABLE SPEED AC MOTOR CURVES



REMARKS: TYPICAL DATA
DATA VALID FOR NAMEPLATE SPEED RANGE ONLY



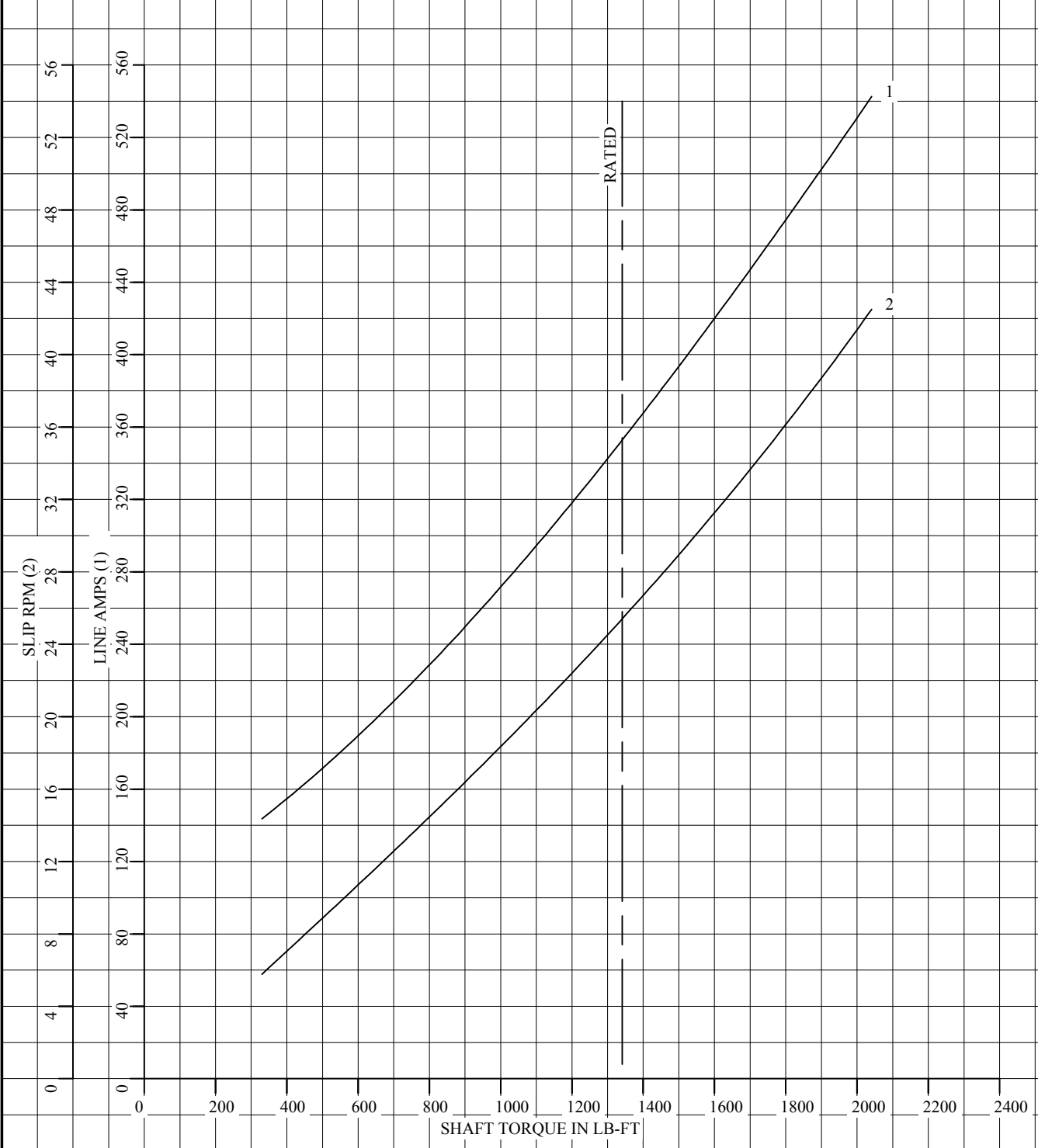
DR. BY K. GREEN
CK. BY B. GRANT
APP. BY J. MARTIN
DATE 06-18-14

**A-C MOTOR
PERFORMANCE
CURVES**

L6195A
SH 1 OF 2
ISSUE DATE 6-18-14

REL S.O.	-	VOLTS	460	ENCLOSURE	DPFV	WYE CONN EQ CKT OHMS PER PHASE	
FRAME	RL3614	AMPS	353	MAX SAFE RPM	3750	(AT BASE RATING, 25 °C)	
HP	300	DUTY	CONT	IM (AMPS)	118	R1	.0137 X1 .0894
BASE SPEED	1175	S.F.	1.0	P.F. @NL/FL	.037/.870	R2	.0107 X2 .0845
PHASE/HERTZ	3/40	AMB °C/INSUL	40/H	WK ² (Lb-Ft ²)	45		XM 2.34

CORRELATED DATA
LOAD PERFORMANCE (CONSTANT V/HZ RANGE)



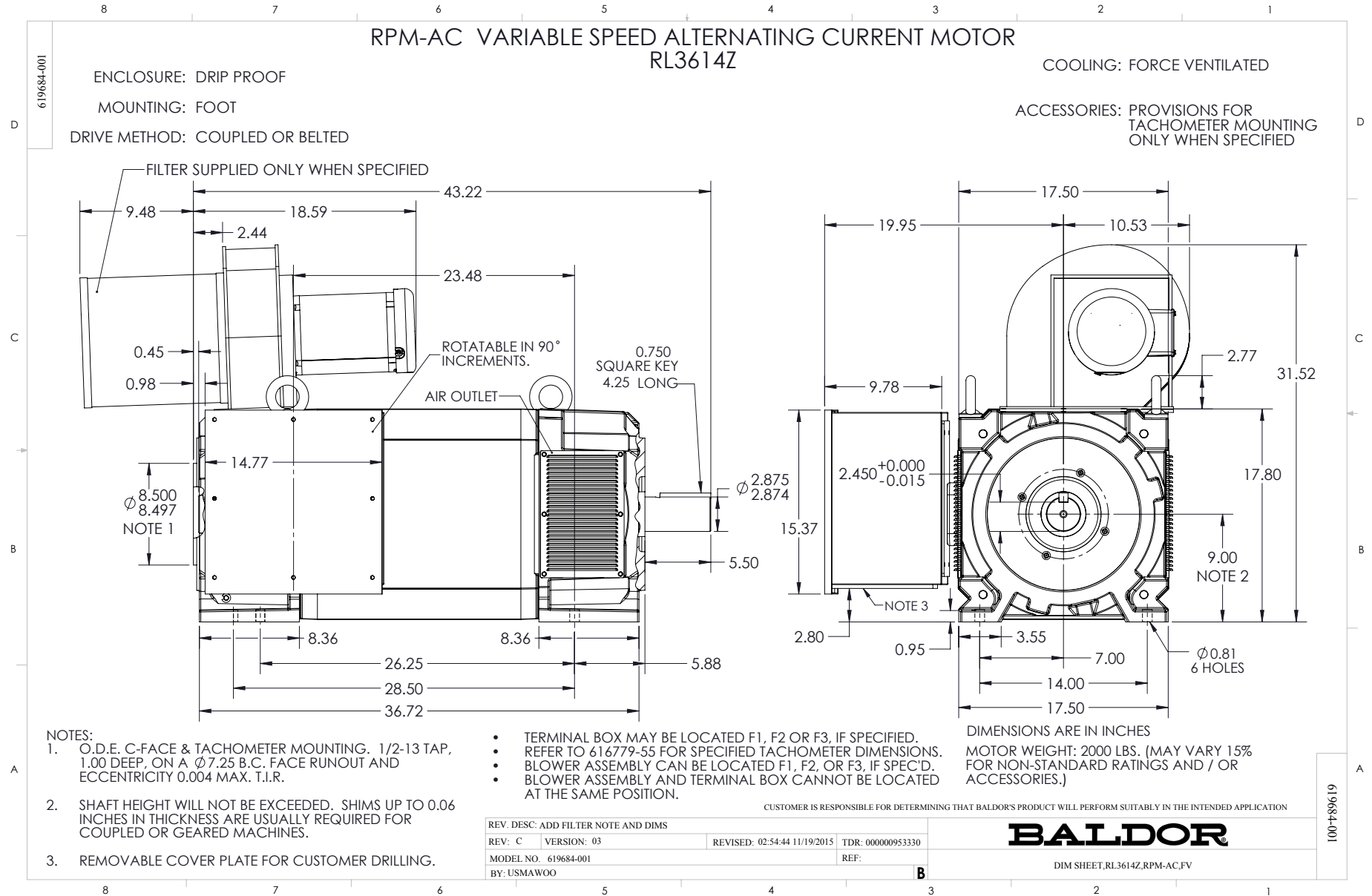
REMARKS: TYPICAL DATA
DATA VALID FOR NAMEPLATE SPEED RANGE ONLY



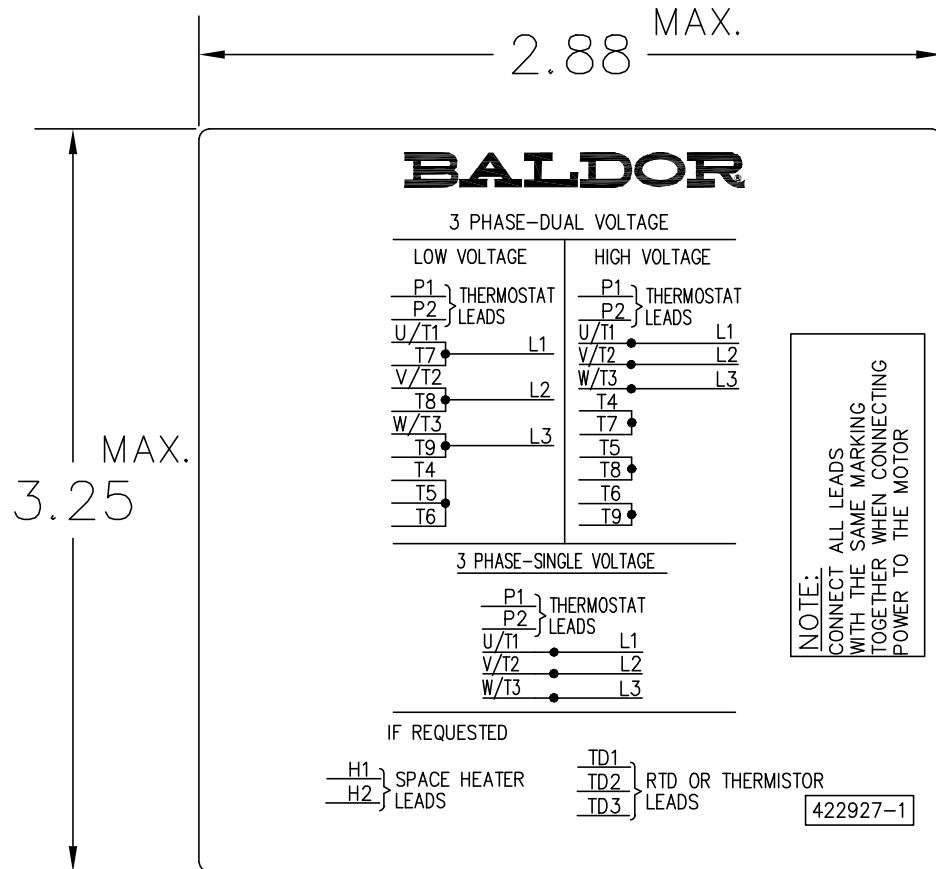
DR. BY K. GREEN
CK. BY B. GRANT
APP. BY J. MARTIN
DATE 06-18-14

**A-C MOTOR
PERFORMANCE
CURVES**

L6195A
SH 2 OF 2
ISSUE DATE 6-18-14



422927-001



NOTE:
DATA TO BE SIZED
SO THAT IT FITS INTO
MATERIAL DECAL
DIMENSIONS. MAKE
LETTERS & NUMBERS
AS LARGE AS POSSIBLE.

MATERIAL: CERAMATIC DGF-P4
PERMA GRIP ADHESIVE

ALL LETTERS, NUMBERS
AND LINES TO BE BLACK
ON WHITE BACKGROUND.

NOTE:
CONNECT ALL LEADS
WITH THE SAME MARKING
TOGETHER WHEN CONNECTING
POWER TO THE MOTOR

422927-001

REV. DESC: CHANGE BACKGROUND COLOR FROM GOLD TO WHITE		
REV. LTR: B	VERSION: 02	TDR: 00000788708
FILE: \RGG\00000\203	REVISED: 08:09:29 03/04/2013	
MTL: -	BY: RGGWT	

BALDOR

EXTERNAL CONNECTION LABEL

SH 1 of 1