

RPM-AC FINNED FRAME VARIABLE SPEED ALTERNATING CURRENT MOTOR

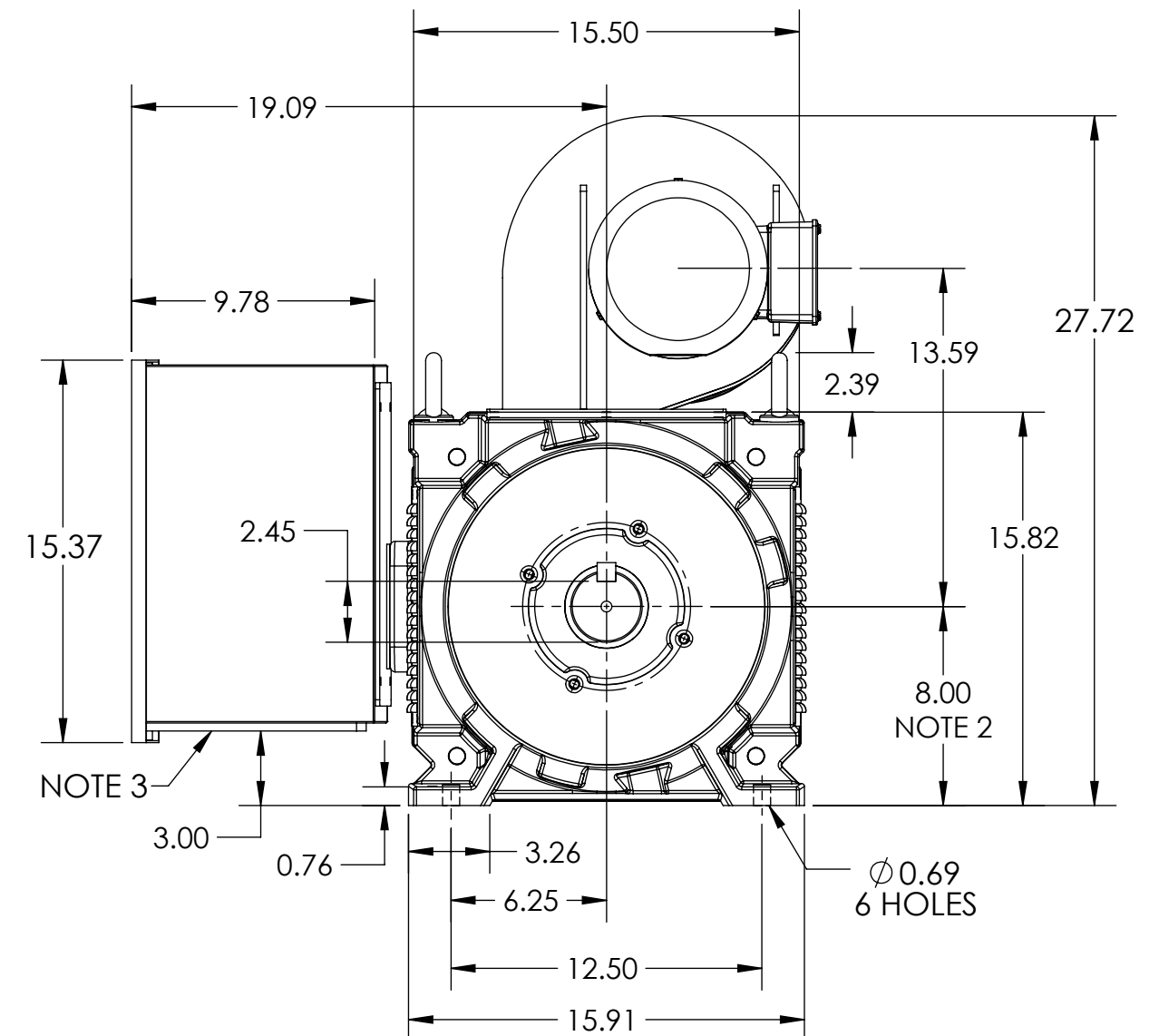
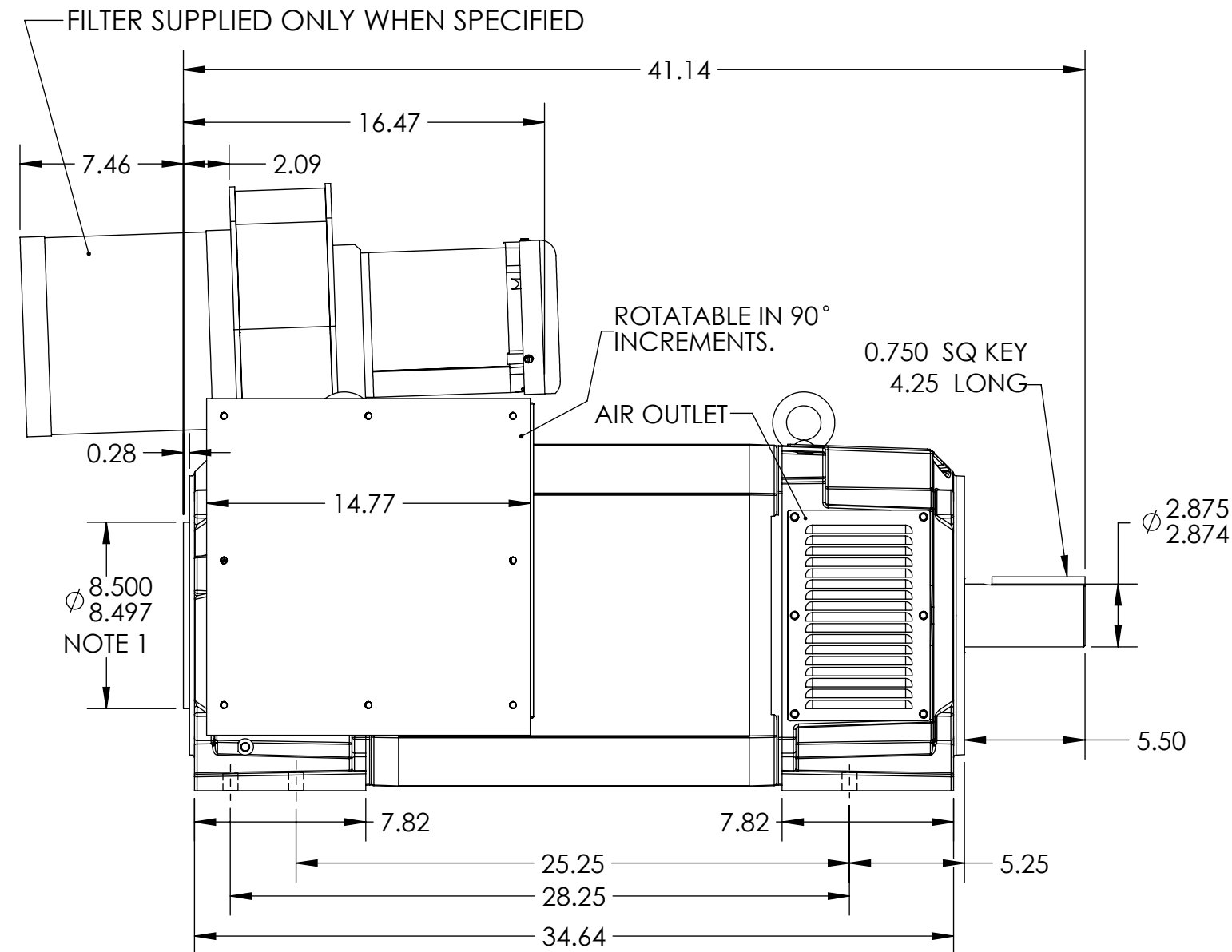
COOLING: FORCE VENTILATED

ACCESSORIES: PROVISIONS FOR
TACHOMETER MOUNTING
ONLY WHEN SPECIFIED

ENCLOSURE: DRIP PROOF

MOUNTING: FOOT

DRIVE METHOD: COUPLED OR BELTED



NOTES:

1. O.D.E. C-FACE & TACHOMETER MOUNTING. 1/2-13 TAP, 1.00 DEEP, ON A $\varnothing 7.25$ B.C. FACE RUN OUT AND ECCENTRICITY 0.004 MAX. T.I.R.

2. SHAFT HEIGHT WILL NOT BE EXCEEDED. SHIMS UP TO 0.06 INCHES IN THICKNESS ARE USUALLY REQUIRED FOR COUPLED OR GEARED MACHINES.

- ### 3. REMOVABLE COVER PLATE FOR CUSTOMER DRILLING.

- TERMINAL BOX MAY BE LOCATED F1, F2 OR F3, IF SPECIFIED.
- REFER TO 616779-51 FOR SPECIFIED TACHOMETER DIMENSIONS
- BLOWER ASSEMBLY CAN BE LOCATED F1, F2, OR F3, IF SPEC'D.
- BLOWER ASSEMBLY AND TERMINAL BOX CANNOT BE LOCATED AT THE SAME POSITION.

DIMENSIONS ARE IN INCHES

MOTOR WEIGHT: 1470 LBS. (MAY VARY 15%
FOR NON-STANDARD RATINGS AND / OR
ACCESSORIES.)

CUSTOMER IS RESPONSIBLE FOR DETERMINING THAT BALDOR'S PRODUCT WILL PERFORM SUITABLY IN THE INTENDED APPLICATION

REV. DESC: ADD "URL" TO TITLE			
REV: C	VERSION: 03	REVISED: 09:02:04 08/23/2017	TDR: 000001040410
MODEL NO. 619695-001			REF: -
BY: RGGWT			

BALDOR

DIM SHT,RL/URL3213Z,FOOTED,RPM-AC,DP FV

619695-001