

# **ABB BALDOR RELIANCE III**

---

## **Customer information packet**

IDDRPM281256

125HP, 1150, 460V, RL2898, DPFV, F1

Copyright © All product information within this document is subject to ABB Motors and Mechanical Inc. copyright © protection, unless otherwise noted.

7/8/2026 4:28:36 PM

**Specifications**

<b>Enclosure</b>	DPFV
<b>Frame</b>	RL2898Z
<b>Frame Material</b>	Exposed Laminations
<b>Frequency</b>	40.00 Hz
<b>Output @ Frequency</b>	125.000 HP @ 40 HZ
<b>Phase</b>	3
<b>Synchronous Speed @ Frequency</b>	1200 RPM @ 40 HZ
<b>Voltage @ Frequency</b>	460.0 V @ 40 HZ
<b>Agency Approvals</b>	CCSA US
<b>Auxiliary Box</b>	NO AUXILLARY BOX
<b>Base Indicator</b>	Rigid
<b>Bearing Grease Type</b>	Polyrex EM (-20F +300F)
<b>Current @ Voltage</b>	150.900 A @ 460.0 V
<b>Duty Rating</b>	CONT
<b>Feedback Device</b>	NO FEEDBACK
<b>Frame Prefix</b>	RL
<b>Heater Indicator</b>	No Heater
<b>High Voltage Full Load Amps</b>	150.9 a
<b>Insulation Class</b>	H
<b>IP Rating</b>	NONE
<b>Motor Standards</b>	NEMA
<b>Mounting Arrangement</b>	F1
<b>Overall Length</b>	42.43 IN
<b>Product Family</b>	General Industrial
<b>Pulley End Bearing Type</b>	Ball
<b>Pulley Face Code</b>	Standard
<b>Service Factor</b>	1.00
<b>Shaft Diameter</b>	2.624 IN
<b>Shaft Ground Indicator</b>	Shaft Grounding
<b>Shaft Rotation</b>	Reversible
<b>Speed</b>	1165 rpm
<b>Starting Method</b>	Full Voltage

**Part Detail**

<b>Revision</b>	B
<b>Type</b>	AC
<b>Mech. spec.</b>	
<b>Base</b>	
<b>Status</b>	PRD/A
<b>Elec. spec.</b>	L1591A
<b>Layout</b>	617249-051
<b>Eff. date</b>	03-24-2022
<b>CD Diagram</b>	422927-001
<b>Poles</b>	04
<b>Leads</b>	
<b>Proprietary</b>	False
<b>Created date</b>	10-29-2021

**Thermal Device - Bearing**

**None**

**Thermal Device - Winding**

**Normally Closed Thermostat**

---

**Nameplate**

**000613006MY**

	<b>DUTY</b>	<b>HP</b>	<b>RPM</b>	<b>AMPS</b>	<b>VOLTS</b>	<b>HZ</b>	
	CONT	125	1165	150.9	460	40	
	CONT	125	1970	159	460	68	
<b>CAT.NO.</b>	IDDRPM281256		<b>SPEC. NO.</b>	R28-A000-0373			
<b>SER.NO</b>		<b>FR</b>	RL2898Z	<b>INSUL</b>	H		
<b>PH.</b>	3	<b>MAX SAFE SPEED</b>	5000	<b>AMB.</b>	40	<b>MIN. AMB.</b>	-25
<b>DESIGN NO.</b>	L1591A	<b>TYPE</b>		<b>ENCL.</b>	DPG-FV		
<b>S.F.</b>	1.00	<b>D.E. BRG.</b>	75BC02J30X				
<b>ENCL MOD</b>		<b>O.D.E. BRG.</b>	55BC02J30X				
	IP23						

REL S.O.	-	VOLTS	460	ENCLOSURE	DPFV	WYE CONN EQ CKT OHMS PER PHASE			
FRAME	RL2898	AMPS	151	MAX SAFE RPM	5000	(AT BASE RATING, 25 °C)			
HP	125	DUTY	CONT	IM (AMPS)	48	R1	.0460	X1	.223
BASE SPEED	1165	S.F.	1.0	P.F. @NL/FL	.055/.870	R2	.0346	X2	.239
PHASE/HERTZ	3/40	AMB °C/INSUL	40/H	WK <sup>2</sup> (Lb-Ft <sup>2</sup> )	11.1			XM	5.66

**RATED FULL LOAD DATA**

	RPM	HP	TORQUE LB-FT	FUND VOLTS	FREQ-HZ	AMPS
BASE SPEED	1167	125	562	460	40	151
MAX SPEED	1969	125	333	460	67.8	157
MIN SPEED	0	0	0	21.4	1.10	151

**LOAD PERFORMANCE AT BASE SPEED**

	RPM	HP	TORQUE LB-FT	FUND VOLTS	FREQ-HZ	AMPS
NO LOAD	1200	0	0	460	40	47.0
1/4	1193	31.3	138	460	40	59.2
1/2	1185	62.6	278	460	40	84.3
3/4	1177	93.7	418	460	40	115
FULL LOAD	1167	125	562	460	40	151
O/L	1144	184	844	460	40	233

REMARKS: TYPICAL DATA

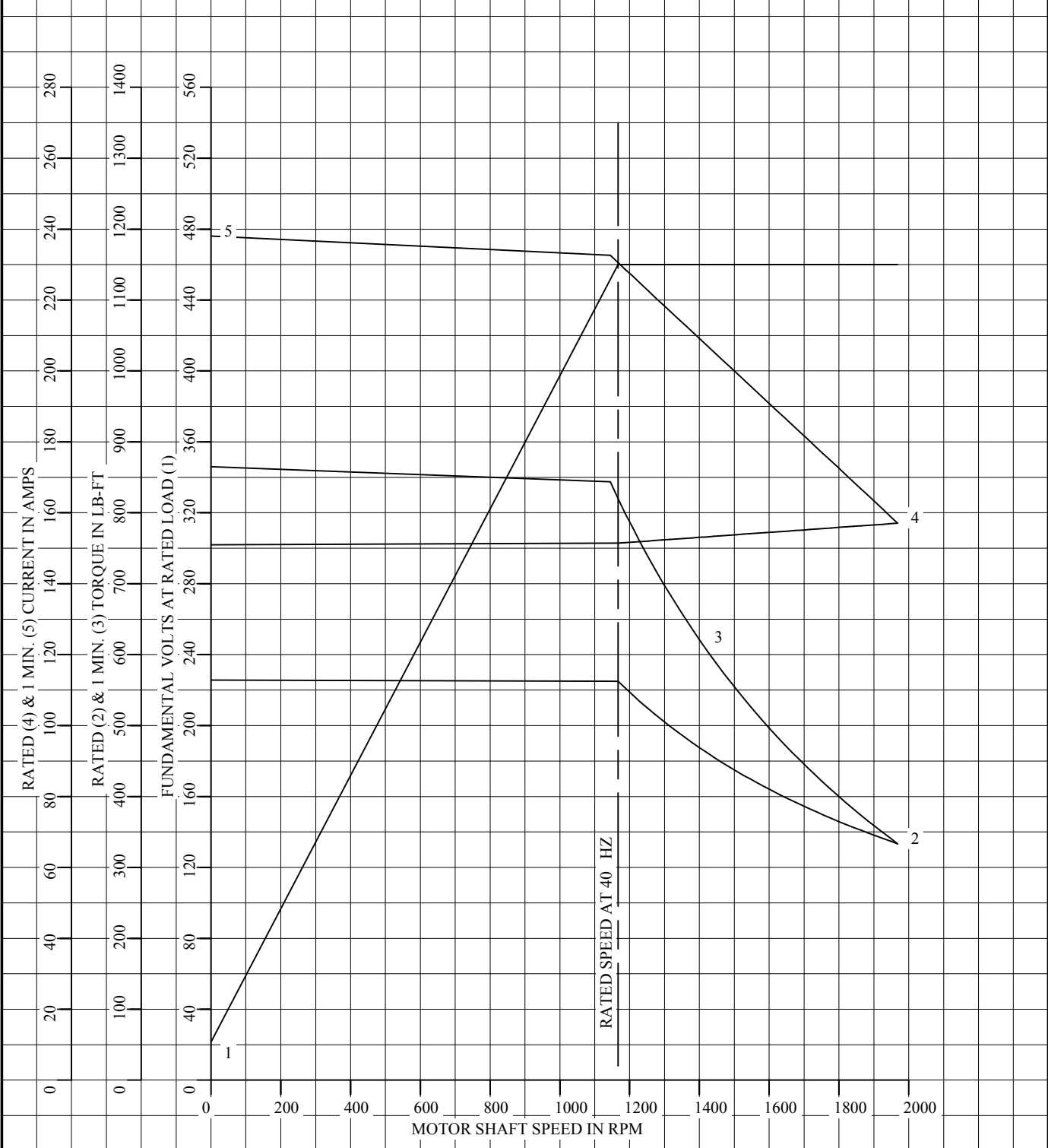


DR. BY M. ORDERS  
 CK. BY B. GRANT  
 APP. BY T. EVON  
 DATE 11-8-99

**A-C MOTOR  
 PERFORMANCE DATA** L1591A  
 ISSUE DATE 11-8-99

REL S.O.	-	VOLTS	460	ENCLOSURE	DPFV	WYE CONN EQ CKT OHMS PER PHASE	
FRAME	RL2898	AMPS	151	MAX SAFE RPM	5000	(AT BASE RATING, 25 °C)	
HP	125	DUTY	CONT	IM (AMPS)	48	R1	.0460 X1 .223
BASE SPEED	1165	S.F.	1.0	P.F. @NL/FL	.055/.870	R2	.0346 X2 .239
PHASE/HERTZ	3/40	AMB °C/INSUL	40/H	WK <sup>2</sup> (Lb-Ft <sup>2</sup> )	11.1		XM 5.66

VARIABLE SPEED AC MOTOR CURVES



REMARKS: TYPICAL DATA  
DATA VALID FOR NAMEPLATE SPEED RANGE ONLY



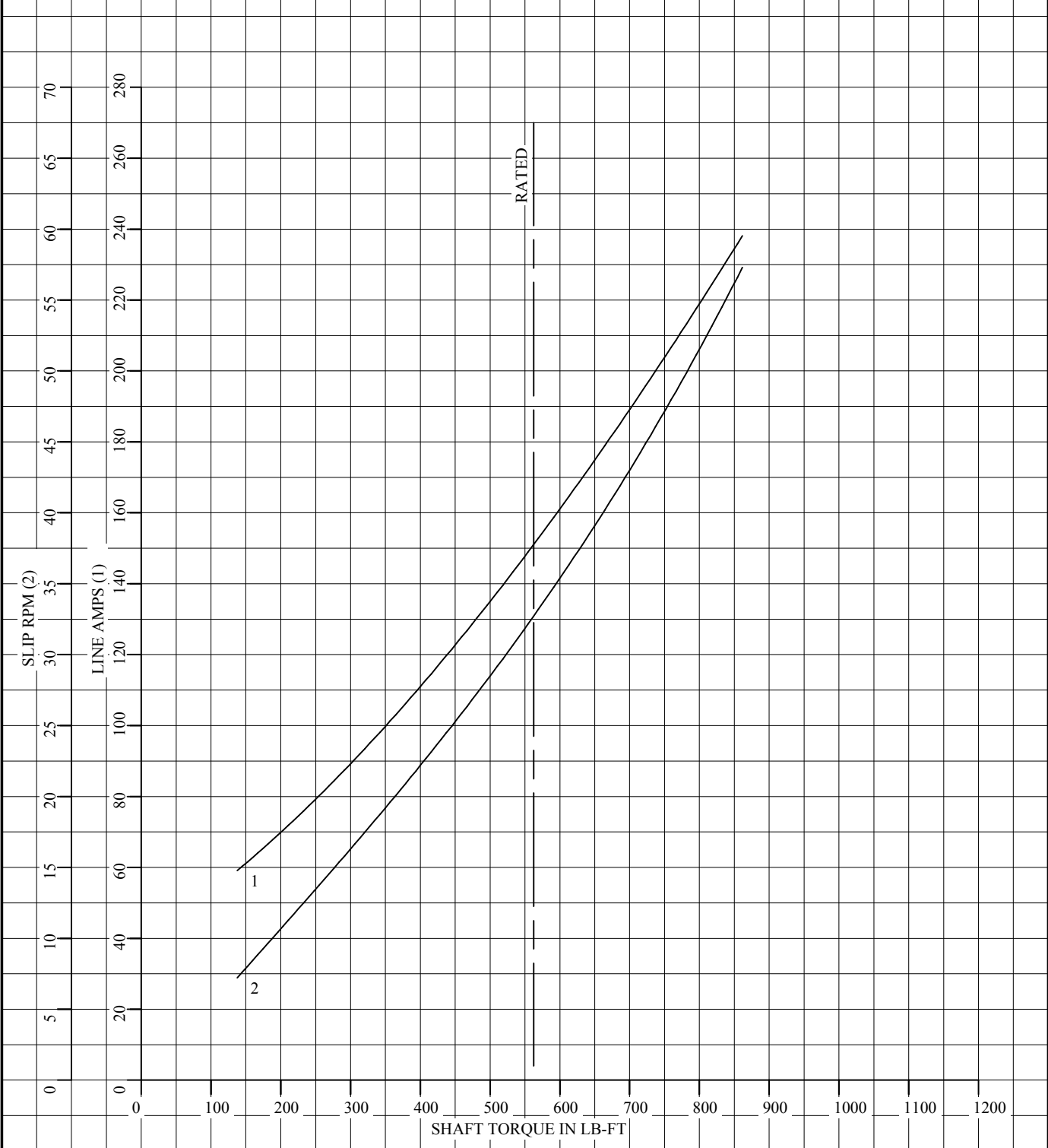
DR. BY M. ORDERS  
CK. BY B. GRANT  
APP. BY T. EVON  
DATE 11-8-99

**A-C MOTOR  
PERFORMANCE  
CURVES**

**L1591A**  
SH 1 OF 2  
ISSUE DATE 11-8-99 Page 6 of 10

REL S.O.	-	VOLTS	460	ENCLOSURE	DPFV	WYE CONN EQ CKT OHMS PER PHASE	
FRAME	RL2898	AMPS	151	MAX SAFE RPM	5000	(AT BASE RATING, 25 °C)	
HP	125	DUTY	CONT	IM (AMPS)	48	R1 .0460	X1 .223
BASE SPEED	1165	S.F.	1.0	P.F. @NL/FL	.055/.870	R2 .0346	X2 .239
PHASE/HERTZ	3/40	AMB °C/INSUL	40/H	WK <sup>2</sup> (Lb-Ft <sup>2</sup> )	11.1		XM 5.66

LOAD PERFORMANCE (CONSTANT V/HZ RANGE)



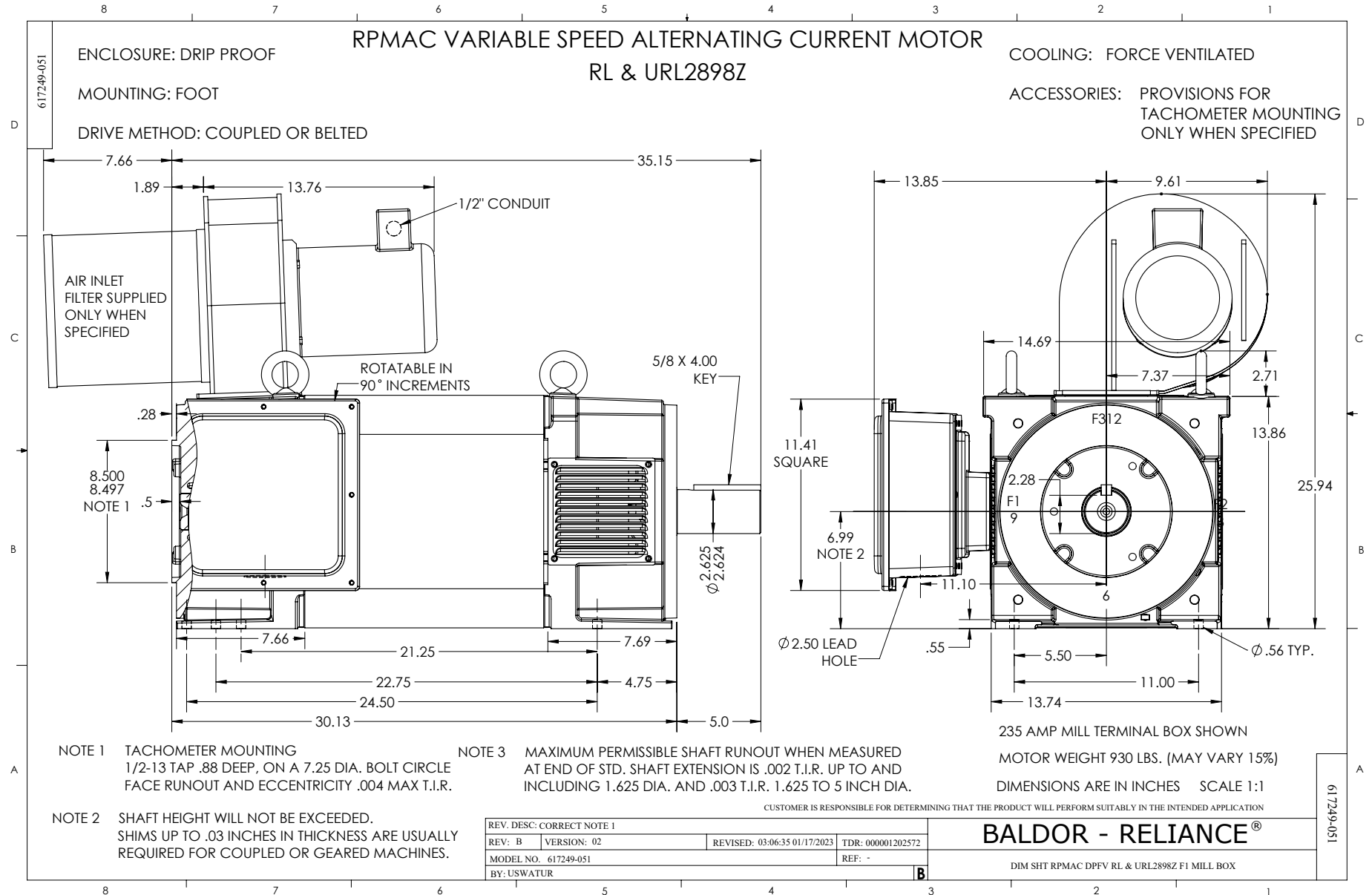
REMARKS: TYPICAL DATA  
DATA VALID FOR NAMEPLATE SPEED RANGE ONLY



DR. BY M. ORDERS  
CK. BY B. GRANT  
APP. BY T. EVON  
DATE 11-8-99

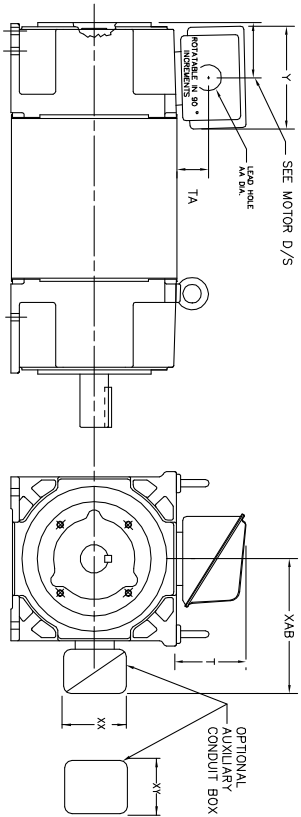
**A-C MOTOR  
PERFORMANCE  
CURVES**

**L1591A**  
SH 2 OF 2  
ISSUE DATE 11-8-99 Page 7 of 10



**INDUSTRIAL ALTERNATING CURRENT MOTORS**  
**RPM AC**

STEEL, CAST IRON, MILL AND TERMINAL BOARD CONDUIT BOX DIMENSIONS  
NEMA FRAMES RL210 thru RL280 and IEC FRAMES RDL132 thru RDL180  
NEMA FRAMES FL180 thru FL280 and IEC FRAMES FDL112 thru FDL180



FRAME	TYPE	TERMINAL STRIP	AMPS	C/BOX	Y	TA	T	AA
FL180	STEEL	N	40	706320003A	5.00	1.62	3.00	1.12
FL180	STEEL	N	75	706320003A	6.12	2.38	4.38	1.75/2.00
FL180	CAST IRON	N	208	706320007A	6.82	2.00	7.00	2.50/2.00
FL180 & FDL11	CAST IRON	Y/N	40	706320004B	5.75	2.38	4.38	1.50/1.75
FL180 & FDL11	MILL	Y	100	706310028A	7.75	2.30	4.40	PC29/PG16
FL210 & RL210	STEEL	N	61	0754520009	6.34	2.00	4.12	1.75
FL210 & RL210	STEEL	N	121	0754520009	7.69	2.38	5.25	1.94
FL210 & RL210	STEEL	N	306	706320016A	9.00	4.12	8.42	4.89
FL210 & RL210	CAST IRON	N	110	075460052B	7.25	2.50	5.25	1.5 TAP
FL210 & RL210	MILL	Y	100	706310225A	7.75	2.30	4.40	PC29/PG16
FL210 & RL210	MILL	Y	160	706310056A	9.00	3.06	5.40	PC36/PG16
FL210 & RL210	MILL	Y/N	235	706310637A	11.42	4.00	6.72	2.50
FL250 & RL250	STEEL	N	61	0754520009	6.34	2.00	4.12	1.75
FL250 & RL250	STEEL	N	121	0754520009	7.69	2.38	5.25	1.94
FL250 & RL250	STEEL	N	306	706320016A	9.00	4.12	8.42	4.89
FL250 & RL250	CAST IRON	N	110	075460052B	7.25	2.50	5.25	1.5 TAP
FL250 & RL250	CAST IRON	N	210	706320017A	10.50	4.88	9.00	4.0 TAP
FL250 & RL250	MILL	Y	100	706310225A	7.75	2.30	4.40	PC29/PG16
FL250 & RL250	MILL	Y	160	706310056A	9.00	3.06	5.40	PC36/PG16
FL250 & RL250	MILL	Y/N	235	706310637A	11.42	4.00	6.72	2.50
FL250 & RL250	MILL	Y	400	706310063B	14.39	7.43	12.15	BLANK

FRAME	TYPE	TERMINAL STRIP	AMPS	C/BOX	Y	TA	T	AA
FL280 & RL280	STEEL	N	160	706320029A	7.25	3.50	7.06	2.50
FL280 & RL280	STEEL	N	306	706320016A	9.00	4.12	8.42	4.89
FL280 & RL280	STEEL	N	500	702565001C	14.62	7.56	12.70	5.00
FL280 & RL280	CAST IRON	N	140	706320012B	9.25	4.81	8.56	3.0 TAP
FL280 & RL280	CAST IRON	N	210	706320015A	10.50	4.88	9.00	4.0 TAP
FL280 & RL280	CAST IRON	N	510	706320014D	15.00	7.56	12.81	5.0 TAP
FL280 & RL280	MILL	Y	100	706310056A	7.75	2.30	4.40	PC29/PG16
FL280 & RL280	MILL	Y	160	706310056B	9.00	3.06	5.40	PC36/PG16
FL280 & RL280	MILL	Y/N	235	706310637A	11.42	4.00	6.72	2.50
FL280 & RL280	MILL	Y	400	706310063B	14.39	7.43	12.15	BLANK

FRAME SIZE	OPTIONAL AUXILIARY CONDUIT BOX DIMENSIONS (MAXIMUM)								
	XAB	XX	XY	PART NUMBER	FRAME SIZE	PART NUMBER			
FL210/FL180/FL280/FL112	7.38	4.25	4.25	602007-26-A	FL210/FL180/FL280/FL112	10.88	8.00	8.00	706310-3-B
FL250/FL160/FL250/FL180	8.44	4.25	4.25	602007-26-A	FL250/FL160/FL250/FL180	11.88	8.00	8.00	706310-3-B
FL280/FL190/FL280/FL180	9.12	4.25	4.25	602007-26-A	FL280/FL190/FL280/FL180	12.62	8.00	8.00	706310-3-B

- (1) 1/4" PIPE TAP
- (2) 1/2" PIPE TAP
- (3) CUSTOMER TO PROVIDE W/LE TERE CONDUIT.
- (4) 2" DIA. SA OR 1" DIA. DN W/2"

TERMINAL BOX CAN BE ROTATED FOR LEAD INLET AT TOP, SIDES OR BOTTOM  
TERMINAL BOX LOCATED ON OPPOSITE SIDE WHEN F-2, V-1, V-4, V-5, V-7,  
OR C-1 MOUNTING IS SPECIFIED. BOX LOCATED ON TOP WHEN SPECIFIED.

050-677919

CUSTOMER IS RESPONSIBLE FOR DETERMINING THAT BALDOR'S PRODUCT WILL PERFORM SUITABLY IN THE INTENDED APPLICATION.

REV. DESC: ADD 706310-637 & 639 BOX	VERSION: 06	TDR: 000001180260
REV. LTR: F	REVISED: 11: 08: 56 10/26/2021	BY: RCGRWM
FILE: \\RGG\00003\692		
MTL: -		

**BALDOR - RELIANCE®**

DIM SHT NEMA RL210-RL280 FL180-FL280 IEC RDL132-RDL180

SH 1 of 1

422927-001



NOTE:  
DATA TO BE SIZED  
SO THAT IT FITS INTO  
MATERIAL DECAL  
DIMENSIONS. MAKE  
LETTERS & NUMBERS  
AS LARGE AS POSSIBLE.

MATERIAL: CERAMATIC DGF-P4  
PERMA GRIP ADHESIVE

ALL LETTERS, NUMBERS  
AND LINES TO BE BLACK  
ON WHITE BACKGROUND.

NOTE:  
CONNECT ALL LEADS  
WITH THE SAME MARKING  
TOGETHER WHEN CONNECTING  
POWER TO THE MOTOR

422927-1

422927-001

REV. DESC: CHANGE BACKGROUND COLOR FROM GOLD TO WHITE		
REV. LTR: B	VERSION: 02	TDR: 00000788708
FILE: \RGG\00000\203	REVISED: 08:09:29 03/04/2013	
MTL: -	BY: RGGWT	

**BALDOR**

EXTERNAL CONNECTION LABEL

SH 1 of 1