

ABB BALDOR RELIANCE III

Customer information packet IDDRPM281006

100HP, 1150, 460V, RL2882, DPFV, F1

Specifications

Enclosure	DPFV
Frame	RL2882Z
Frame Material	Exposed Laminations
Frequency	40.00 Hz
Output @ Frequency	100.000 HP @ 40 HZ
Phase	3
Synchronous Speed @ Frequency	1200 RPM @ 40 HZ
Voltage @ Frequency	460.0 V @ 40 HZ
Agency Approvals	CCSA US
Auxiliary Box	NO AUXILLARY BOX
Base Indicator	Rigid
Bearing Grease Type	Polyrex EM (-20F +300F)
Current @ Voltage	124.000 A @ 460.0 V
Duty Rating	CONT
Feedback Device	NO FEEDBACK
Frame Prefix	RL
Heater Indicator	No Heater
High Voltage Full Load Amps	124.0 a
Insulation Class	H
IP Rating	NONE
Motor Standards	NEMA
Mounting Arrangement	F1
Overall Length	38.43 IN
Product Family	General Industrial
Pulley End Bearing Type	Ball
Pulley Face Code	Standard
Service Factor	1.00
Shaft Diameter	2.624 IN
Shaft Ground Indicator	Shaft Grounding
Shaft Rotation	Reversible
Speed	1160 rpm
Starting Method	Full Voltage

Part Detail

Revision	B
Type	AC
Mech. spec.	
Base	
Status	PRD/A
Elec. spec.	L0337A
Layout	617243-051
Eff. date	03-24-2022
CD Diagram	422927-001
Poles	04
Leads	
Proprietary	False
Created date	10-29-2021

Thermal Device - Bearing

None

Thermal Device - Winding

Normally Closed Thermostat

Nameplate

000613006MY

	DUTY	HP	RPM	AMPS	VOLTS	HZ	
	CONT	100	1160	124	460	40	
	CONT	100	1445	123	460	50	
	CONT	40	3450	49	460	116.7	
CAT.NO.	IDDRPM281006		SPEC. NO.	R28-A000-0374			
SER.NO		FR	RL2882Z	INSUL	H		
PH.	3	MAX SAFE SPEED	5000	AMB.	40	MIN. AMB.	-25
DESIGN NO.	L0337A	TYPE		ENCL.	DPG-FV		
S.F.	1.00	D.E. BRG.	75BC02J30X				
ENCL MOD		O.D.E. BRG.	55BC02J30X				
	IP23						

REL S.O.	-	VOLTS	460	ENCLOSURE	DPFV	WYE CONN EQ CKT OHMS PER PHASE			
FRAME	RL2882	AMPS	122.91	MAX SAFE RPM	5000	(AT BASE RATING, 25 °C)			
HP	100	DUTY	CONT	IM (AMPS)	36.86	R1	.0684	X1	.323
BASE SPEED	1160	S.F.	1.0	P.F. @NL/FL	.059/.867	R2	.0486	X2	.298
PHASE/HERTZ	3/40	AMB °C/INSUL	40/H	WK ² (Lb-Ft ²)	8.3			XM	7.38

RATED FULL LOAD DATA

	RPM	HP	TORQUE LB-FT	FUND VOLTS	FREQ-HZ	AMPS
BASE SPEED	1158	99.9	453	460	40	123
MAX SPEED	3452	40.0	61	460	116.7	48.8
MIN SPEED	0	0	453	27.9	1.391	123

LOAD PERFORMANCE AT BASE SPEED

	RPM	HP	TORQUE LB-FT	FUND VOLTS	FREQ-HZ	AMPS
NO LOAD	1200	0	0	460	40	36.4
1/4	1191	25.9	114	460	40	47.0
1/2	1181	51.7	230	460	40	68.6
3/4	1169	77.6	349	460	40	95.9
FULL LOAD	1158	99.9	453	460	40	123
O/L	1124	146	679	460	40	196

REMARKS: TYPICAL DATA
CORRELATED DATA

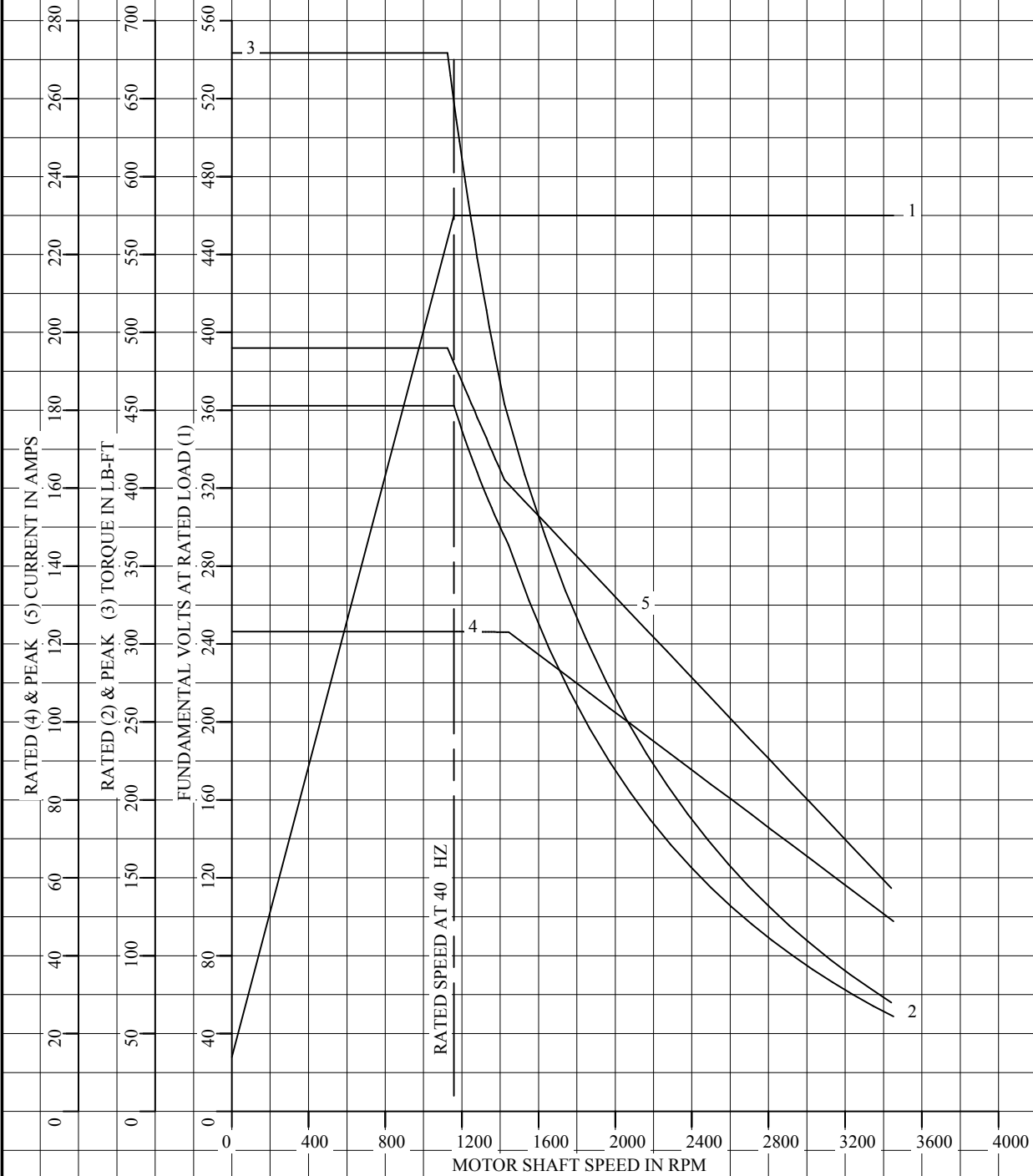


DR. BY J. MARTIN
 CK. BY J. MARTIN
 APP. BY T. EVON
 DATE 1-27-03

**A-C MOTOR
PERFORMANCE DATA** L0337A
 ISSUE DATE 11-17-15

REL S.O.	-	VOLTS	460	ENCLOSURE	DPFV	WYE CONN EQ CKT OHMS PER PHASE	
FRAME	RL2882	AMPS	122.91	MAX SAFE RPM	5000	(AT BASE RATING, 25 °C)	
HP	100	DUTY	CONT	IM (AMPS)	36.86	R1	.0684 X1 .323
BASE SPEED	1160	S.F.	1.0	P.F. @NL/FL	.059/.867	R2	.0486 X2 .298
PHASE/HERTZ	3/40	AMB °C/INSUL	40/H	WK ² (Lb-Ft ²)	8.3		XM 7.38

CORRELATED DATA
VARIABLE SPEED AC MOTOR CURVES



REMARKS: TYPICAL DATA
DATA VALID FOR NAMEPLATE SPEED RANGE ONLY



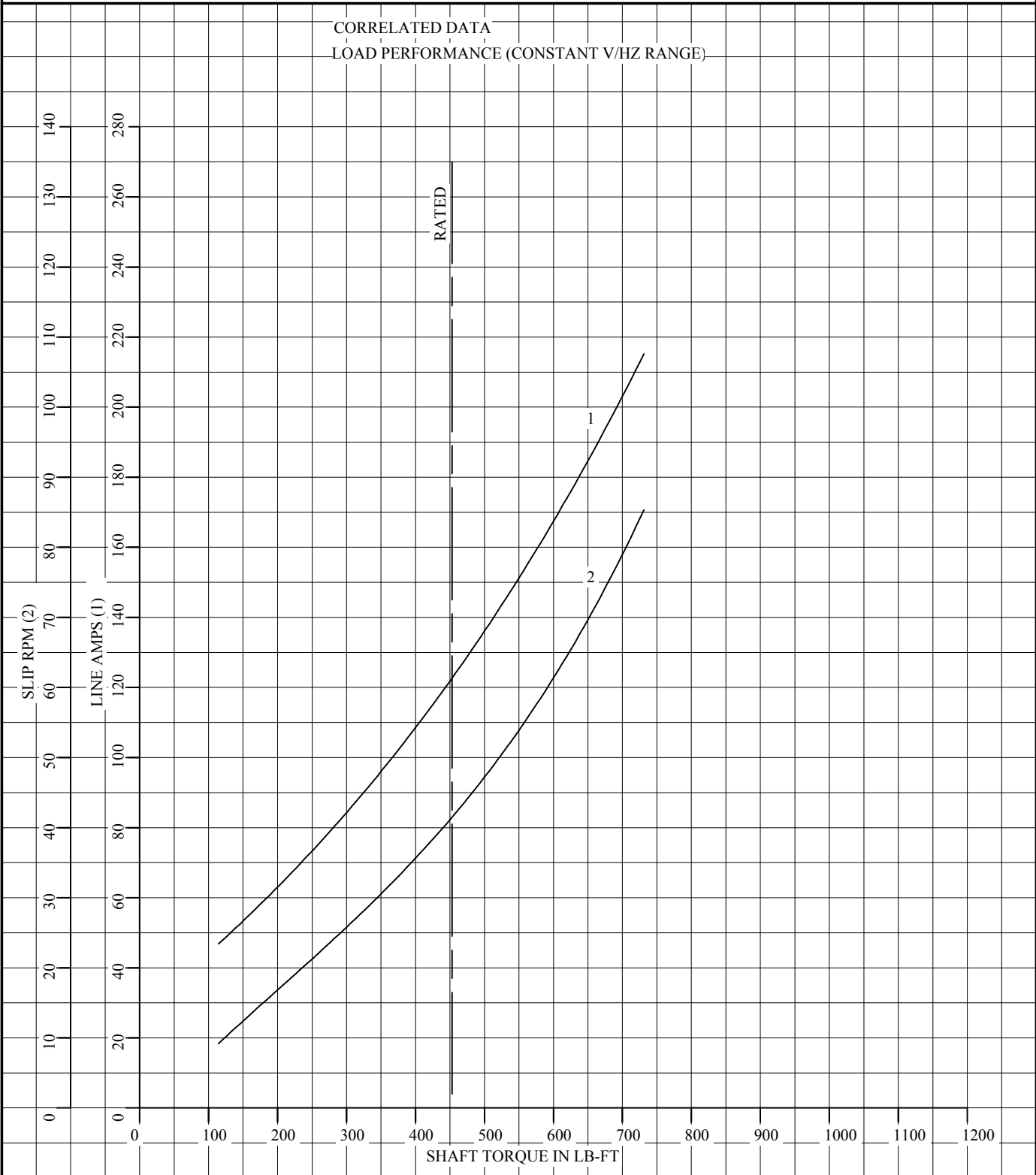
DR. BY J. MARTIN
CK. BY J. MARTIN
APP. BY T. EVON
DATE 1-27-03

**A-C MOTOR
PERFORMANCE
CURVES**

L0337A
SH 1 OF 2
ISSUE DATE 11-17-15 Page 6 of 10

REL S.O.	-	VOLTS	460	ENCLOSURE	DPFV	WYE CONN EQ CKT OHMS PER PHASE	
FRAME	RL2882	AMPS	122.91	MAX SAFE RPM	5000	(AT BASE RATING, 25 °C)	
HP	100	DUTY	CONT	IM (AMPS)	36.86	R1	.0684 X1 .323
BASE SPEED	1160	S.F.	1.0	P.F. @NL/FL	.059/.867	R2	.0486 X2 .298
PHASE/HERTZ	3/40	AMB °C/INSUL	40/H	WK ² (Lb-Ft ²)	8.3		XM 7.38

CORRELATED DATA
LOAD PERFORMANCE (CONSTANT V/HZ RANGE)



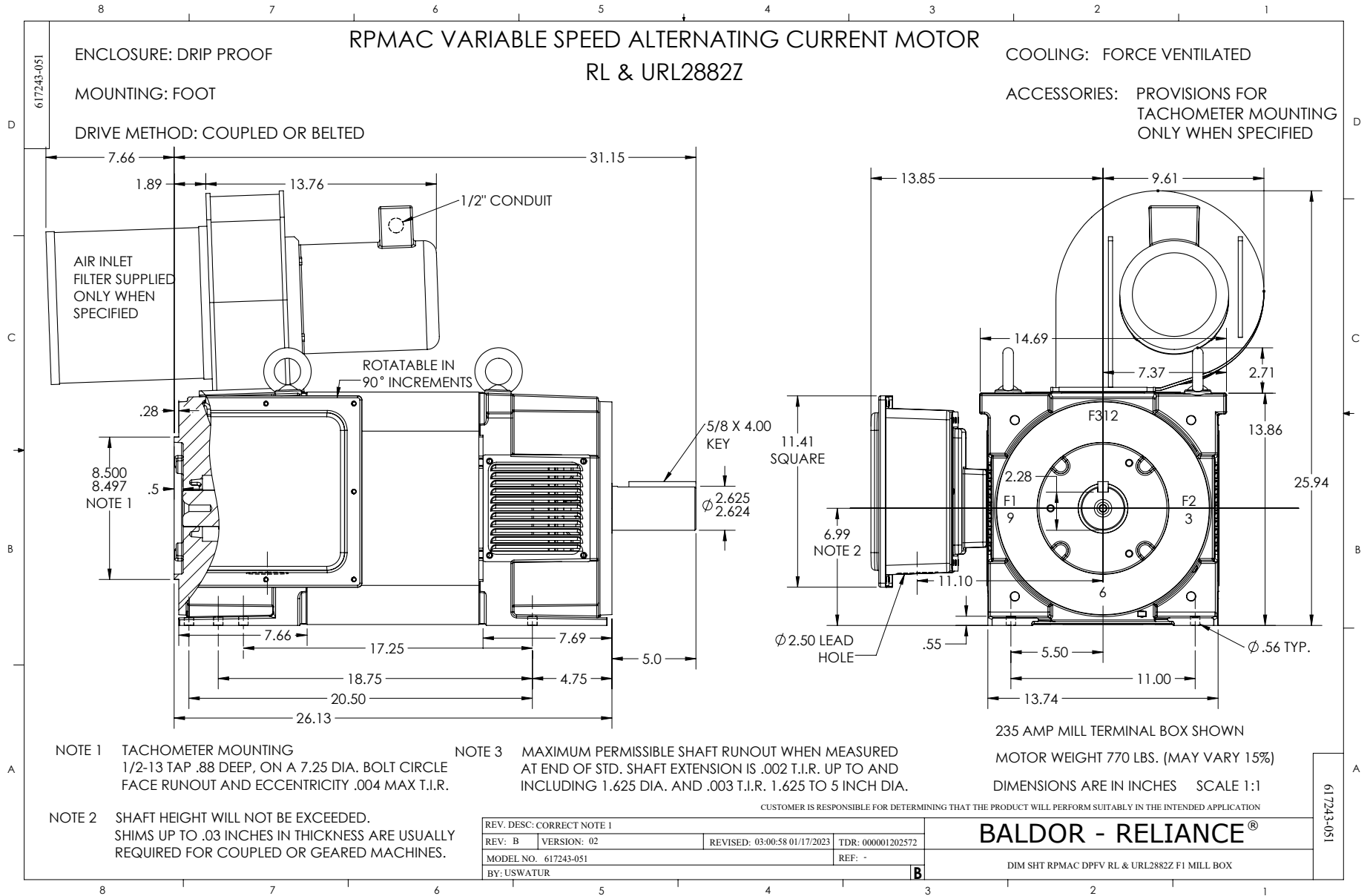
REMARKS: TYPICAL DATA
DATA VALID FOR NAMEPLATE SPEED RANGE ONLY



DR. BY J. MARTIN
CK. BY J. MARTIN
APP. BY T. EVON
DATE 1-27-03

**A-C MOTOR
PERFORMANCE
CURVES**

L0337A
SH 2 OF 2
ISSUE DATE 11-17-13 Page 7 of 10



422927-001



NOTE:
DATA TO BE SIZED
SO THAT IT FITS INTO
MATERIAL DECAL
DIMENSIONS. MAKE
LETTERS & NUMBERS
AS LARGE AS POSSIBLE.

NOTE:
CONNECT ALL LEADS
WITH THE SAME MARKING
TOGETHER WHEN CONNECTING
POWER TO THE MOTOR

MATERIAL: CERAMATIC DGF-P4
PERMA GRIP ADHESIVE

ALL LETTERS, NUMBERS
AND LINES TO BE BLACK
ON WHITE BACKGROUND.

422927-001

REV. DESC: CHANGE BACKGROUND COLOR FROM GOLD TO WHITE		
REV. LTR: B	VERSION: 02	TDR: 00000788708
FILE: \RGG\00000\203	REVISED: 08:09:29 03/04/2013	
MTL: -	BY: RGGWT	

BALDOR

EXTERNAL CONNECTION LABEL

SH 1 of 1