

ABB BALDOR RELIANCE III



Customer information packet IDDRPM25756

75HP, 1150, 460V, RL2586, DPFV, F1

Specifications

Enclosure	DPFV
Frame	RL2586Z
Frame Material	Exposed Laminations
Frequency	40.00 Hz
Output @ Frequency	75.000 HP @ 40 HZ
Phase	3
Synchronous Speed @ Frequency	1200 RPM @ 40 HZ
Voltage @ Frequency	460.0 V @ 40 HZ
Agency Approvals	CCSA US
Auxiliary Box	NO AUXILLARY BOX
Base Indicator	Rigid
Bearing Grease Type	Polyrex EM (-20F +300F)
Current @ Voltage	91.000 A @ 460.0 V
Duty Rating	CONT
Feedback Device	NO FEEDBACK
Frame Prefix	RL
Heater Indicator	No Heater
High Voltage Full Load Amps	91.0 a
Insulation Class	H
IP Rating	NONE
Motor Standards	NEMA
Mounting Arrangement	F1
Overall Length	30.38 IN
Product Family	General Industrial
Pulley End Bearing Type	Ball
Pulley Face Code	Standard
Service Factor	1.00
Shaft Diameter	2.124 IN
Shaft Ground Indicator	Shaft Grounding
Shaft Rotation	Reversible
Speed	1150 rpm
Starting Method	Full Voltage

Part Detail

Revision	A
Type	AC
Mech. spec.	
Base	
Status	PRD/A
Elec. spec.	L1868A
Layout	617222-051
Eff. date	01-21-2022
CD Diagram	422927-001
Poles	04
Leads	
Proprietary	False
Created date	11-02-2021

Thermal Device - Bearing

None

Thermal Device - Winding

Normally Closed Thermostat

Nameplate

000613006MY

	DUTY	HP	RPM	AMPS	VOLTS	HZ	
	CONT	75	1150	91	460	40	
	CONT	75	1400	90	460	48.6	
	CONT	40	3450	49	460	117.6	
CAT.NO.	IDDRPM25756		SPEC. NO.	R25-A000-0364			
SER.NO		FR	RL2586Z	INSUL	H		
PH.	3	MAX SAFE SPEED	5000	AMB.	40	MIN. AMB.	-25
DESIGN NO.	L1868A	TYPE		ENCL.	DPG-FV		
S.F.	1.00	D.E. BRG.	65BC03JPP30A				
ENCL MOD		O.D.E. BRG.	50BC03JPP30A				
	IP23						

REL S.O.	-	VOLTS	460	ENCLOSURE	DPFV	WYE CONN EQ CKT OHMS PER PHASE		
FRAME	RL2586	AMPS	91	MAX SAFE RPM	5000	(AT BASE RATING, 25 °C)		
HP	75	DUTY	CONT	IM (AMPS)	28	R1	.103	X1 .346
BASE SPEED	1150	S.F.	1.0	P.F. @NL/FL	.063/.887	R2	.0808	X2 .352
PHASE/HERTZ	3/40	AMB °C/INSUL	40/H	WK ² (Lb-Ft ²)	4.9			XM 9.97

RATED FULL LOAD DATA

	RPM	HP	TORQUE LB-FT	FUND VOLTS	FREQ-HZ	AMPS
BASE SPEED	1154	75.0	342	460	40	90.8
MAX SPEED	3449	40.0	61	460	117.6	48.9
MIN SPEED	0	0	0	28.0	1.551	91.0

LOAD PERFORMANCE AT BASE SPEED

	RPM	HP	TORQUE LB-FT	FUND VOLTS	FREQ-HZ	AMPS
NO LOAD	1200	0	0	460	40	27.1
1/4	1190	18.8	83	460	40	34.6
1/2	1179	37.6	167	460	40	49.8
3/4	1167	56.2	253	460	40	68.8
FULL LOAD	1154	75.0	342	460	40	90.8
O/L	1121	109	512	460	40	140

**BLOWER
DATA**

VOLTS	PH/HZ	FL AMPS	LR AMPS	FRAME	CFM

REMARKS: TYPICAL DATA
CORRELATED DATA

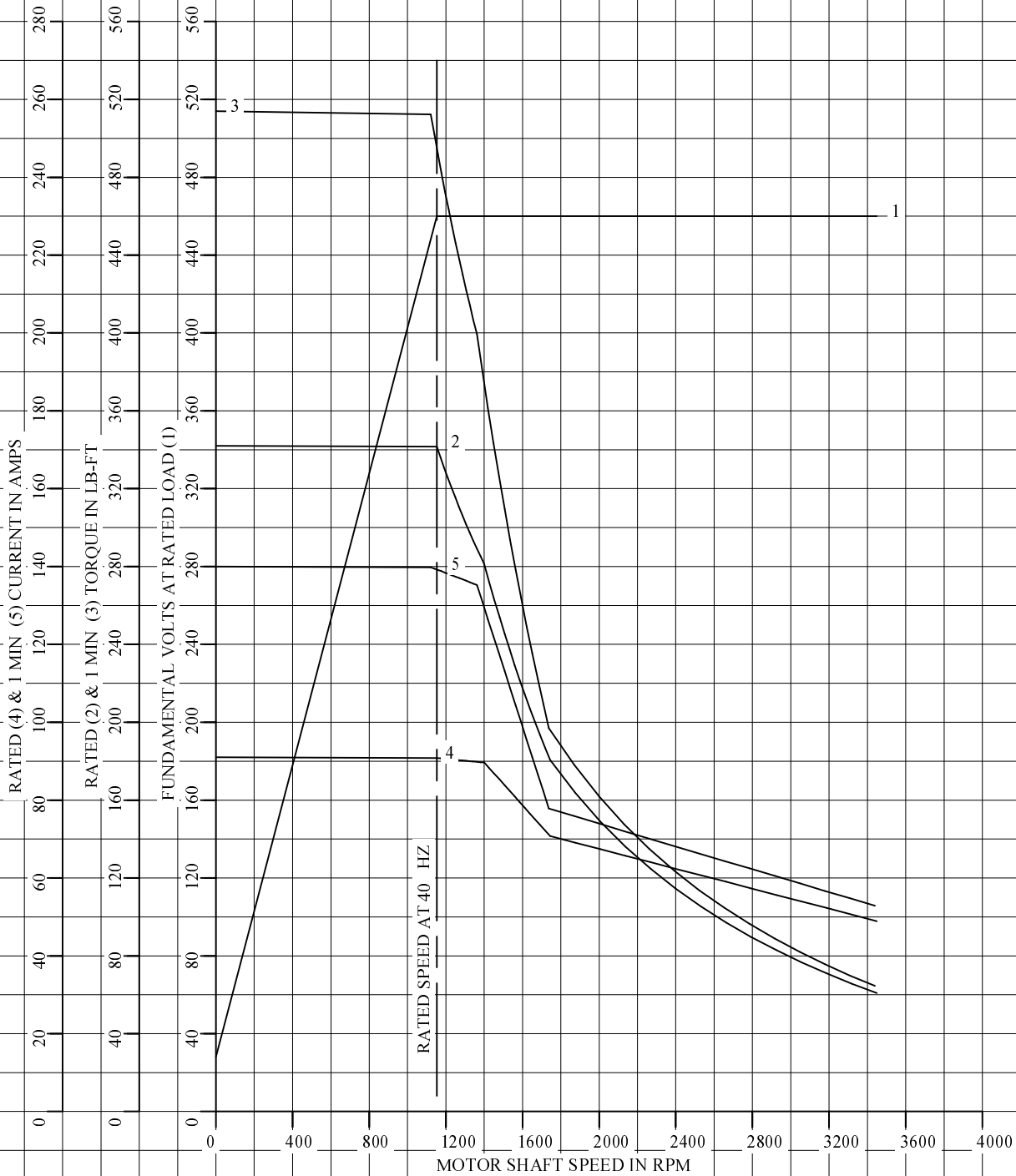


DR. BY M. ORDERS
 CK. BY B. GRANT
 APP. BY T. CUFR
 DATE 05/31/00

**A-C MOTOR
PERFORMANCE DATA** L1868A
 ISSUE DATE 8-19-09

REL S.O.	-	VOLTS	460	ENCLOSURE	DPFV	WYE CONN EQ CKT OHMS PER PHASE	
FRAME	RL2586	AMPS	91	MAX SAFE RPM	5000	(AT BASE RATING, 25 °C)	
HP	75	DUTY	CONT	IM (AMPS)	28	R1	.103 X1 .346
BASE SPEED	1150	S.F.	1.0	P.F. @NL/FL	.063/.887	R2	.0808 X2 .352
PHASE/HERTZ	3/40	AMB °C/INSUL	40/H	WK ² (Lb-Ft ²)	4.9		XM 9.97

CORRELATED DATA
VARIABLE SPEED AC MOTOR CURVES



REMARKS: TYPICAL DATA
DATA VALID FOR NAMEPLATE SPEED RANGE ONLY



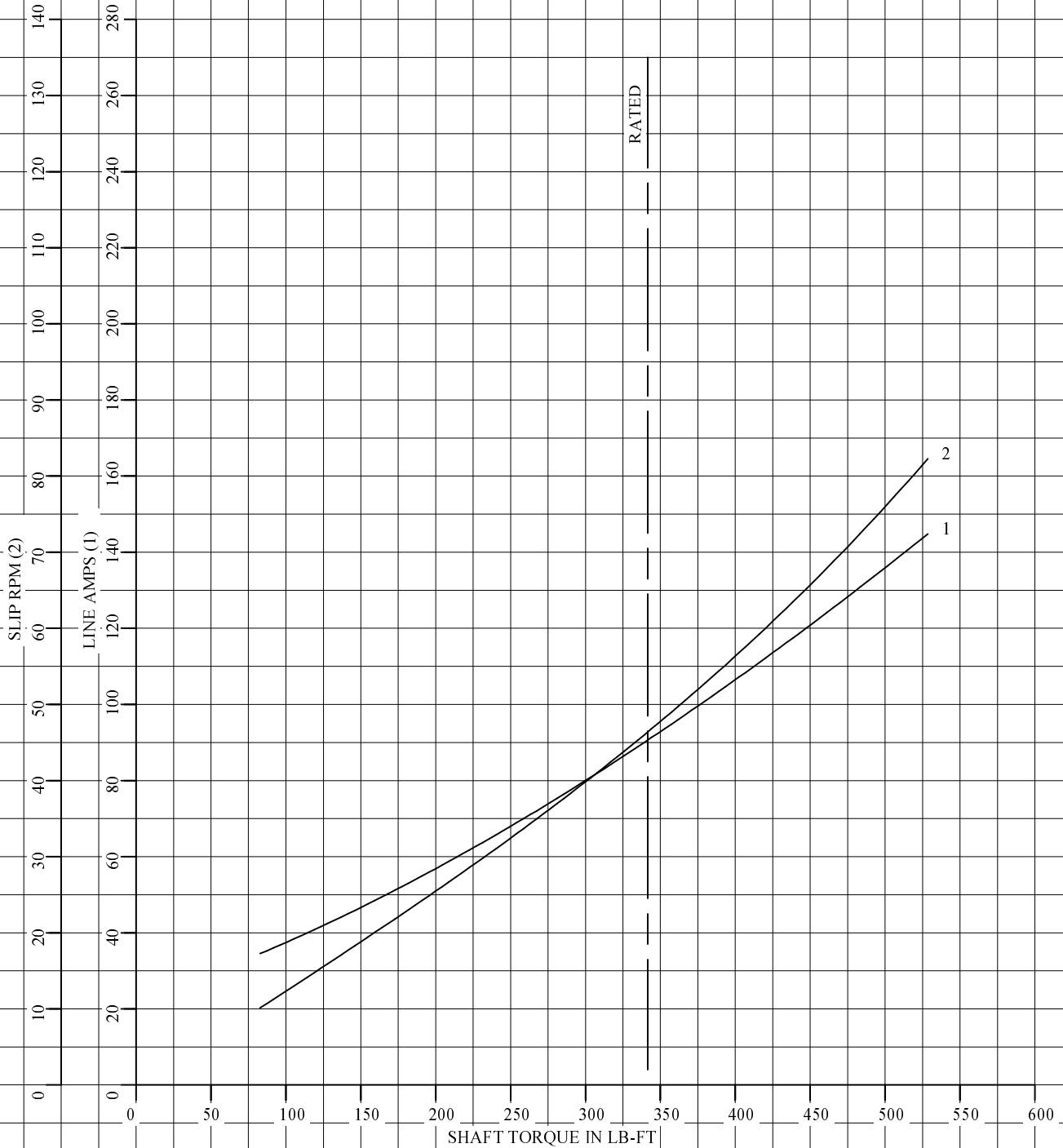
DR. BY M. ORDERS
CK. BY B. GRANT
APP. BY T. CUFR
DATE 05/31/00

**A-C MOTOR
PERFORMANCE
CURVES**

L1868A
SH 1 OF 2
ISSUE DATE 8-19-09

REL S.O.	-	VOLTS	460	ENCLOSURE	DPFV	WYE CONN EQ CKT OHMS PER PHASE	
FRAME	RL2586	AMPS	91	MAX SAFE RPM	5000	(AT BASE RATING, 25 °C)	
HP	75	DUTY	CONT	IM (AMPS)	28	R1	.103 X1 .346
BASE SPEED	1150	S.F.	1.0	P.F. @NL/FL	.063/.887	R2	.0808 X2 .352
PHASE/HERTZ	3/40	AMB °C/INSUL	40/H	WK ² (Lb-Ft ²)	4.9		XM 9.97

CORRELATED DATA
LOAD PERFORMANCE (CONSTANT V/Hz RANGE)



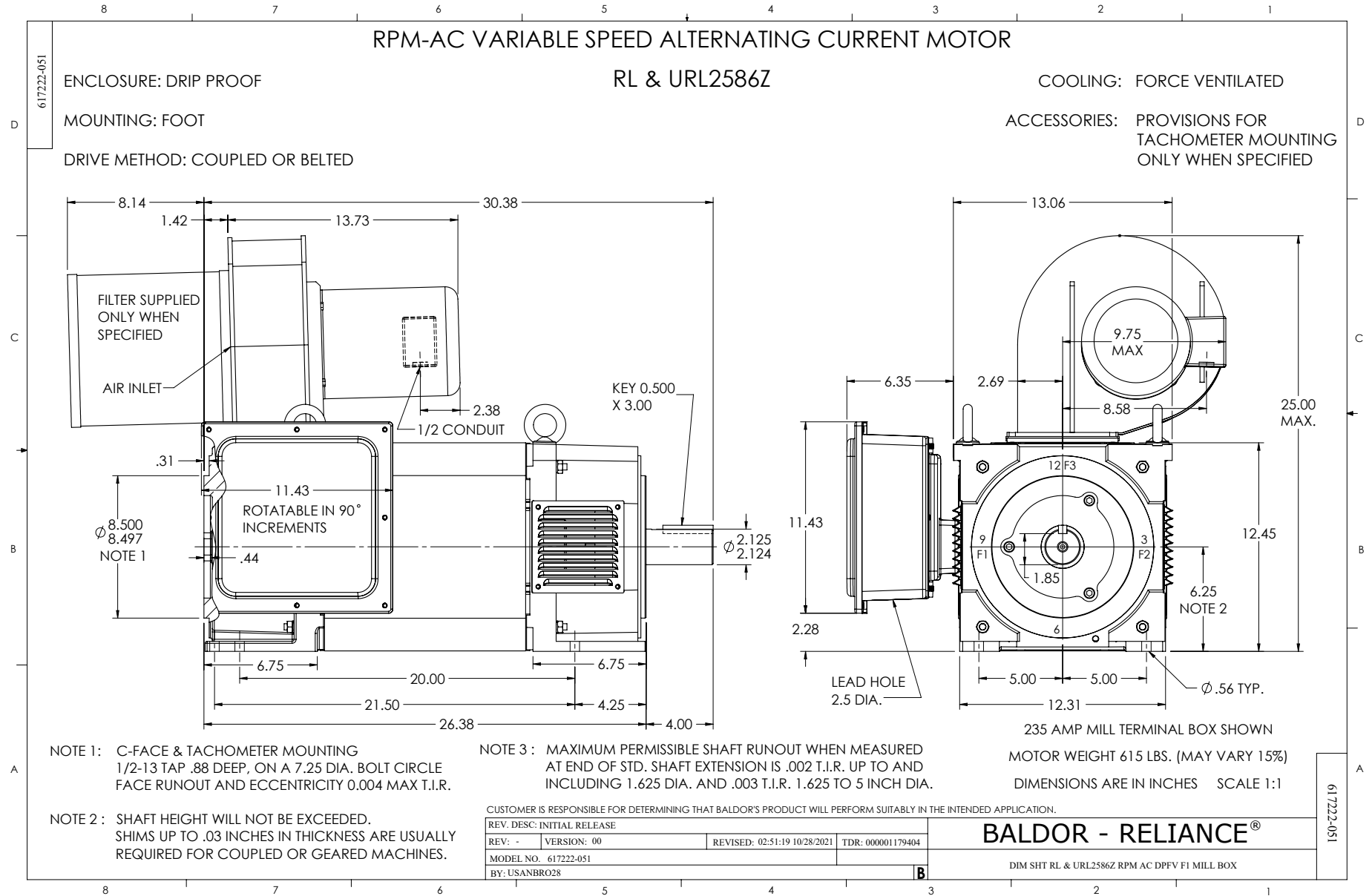
REMARKS: TYPICAL DATA
DATA VALID FOR NAMEPLATE SPEED RANGE ONLY



DR. BY M. ORDERS
CK. BY B. GRANT
APP. BY T. CUFR
DATE 05/31/00

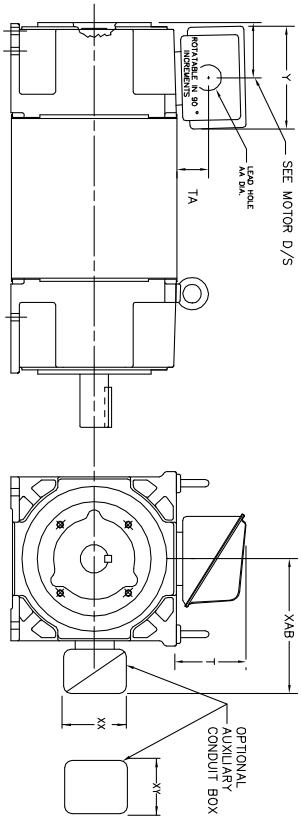
**A-C MOTOR
PERFORMANCE
CURVES**

L1868A
SH 2 OF 2
ISSUE DATE 8-19-09



INDUSTRIAL ALTERNATING CURRENT MOTORS RPM AC

STEEL, CAST IRON, MILL AND TERMINAL BOARD CONDUIT BOX DIMENSIONS
NEMA FRAMES RL210 thru RL280 and IEC FRAMES RDL132 thru RDL180
NEMA FRAMES FL180 thru FL280 and IEC FRAMES FDL112 thru FDL180



FRAME	TYPE	TERMINAL STRIP	AMPS	C/BOX	Y	TA	T	AA
FL180	STEEL	N	40	706320003A	5.00	1.62	3.00	1.12
FL180	STEEL	Y/N	75	706320003A	6.12	2.38	4.38	1.75/2.00
FL180	CAST IRON	N	208	706320007A	6.82	2.00	7.00	2.50/3.00
FL180	CAST IRON	Y/N	400	706320007A	6.75	2.38	4.38	3.00/3.50
FL180 & FDL11	MILL	Y	100	706310028A	7.75	2.30	4.40	PC29/PG16
FL210 & RL210	STEEL	N	61	0754520009	6.34	2.00	4.12	1.75
FL210 & RL210	STEEL	N	121	0754520009	7.69	2.38	5.25	1.94
FL210 & RL210	STEEL	N	306	706320016A	9.00	4.12	8.42	4.89
FL210 & RL210	CAST IRON	N	110	075460052B	7.25	2.50	5.25	1.5 TAP
FL210 & RL210	MILL	Y	100	706310225A	7.75	2.30	4.40	PC29/PG16
FL210 & RL210	MILL	Y	160	706310056A	9.00	3.06	5.40	PC36/PG16
FL210 & RL210	MILL	Y/N	235	706310056B	11.42	4.00	6.72	2.50
FL250 & RL250	STEEL	N	61	0754520009	6.34	2.00	4.12	1.75
FL250 & RL250	STEEL	N	121	0754520009	7.69	2.38	5.25	1.94
FL250 & RL250	CAST IRON	N	110	075460052B	7.25	2.50	5.25	1.5 TAP
FL250 & RL250	CAST IRON	N	210	706320016A	10.50	4.88	9.00	4.0 TAP
FL250 & RL250	MILL	Y	100	706310225A	7.75	2.30	4.40	PC29/PG16
FL250 & RL250	MILL	Y	160	706310056B	9.00	3.06	5.40	PC36/PG16
FL250 & RL250	MILL	Y/N	235	706310056B	11.42	4.00	6.72	2.50
FL250 & RL250	MILL	Y	400	706310063B	14.39	7.43	12.15	BLANK

FRAME	TYPE	TERMINAL STRIP	AMPS	C/BOX	Y	TA	T	AA
FL280 & RL280	STEEL	N	160	706320029A	7.25	3.50	7.06	2.50
FL280 & RL280	STEEL	N	306	706320016A	9.00	4.12	8.42	4.89
FL280 & RL280	STEEL	N	500	702560016C	14.62	7.56	12.70	5.00
FL280 & RL280	CAST IRON	N	140	706320012B	9.25	4.81	8.56	3.0 TAP
FL280 & RL280	CAST IRON	N	210	706320015A	10.50	4.88	9.00	4.0 TAP
FL280 & RL280	CAST IRON	N	510	706320014D	15.00	7.56	12.81	5.0 TAP
FL280 & RL280	MILL	Y	100	706310056A	7.75	2.30	4.40	PC29/PG16
FL280 & RL280	MILL	Y	160	706310056B	9.00	3.06	5.40	PC36/PG16
FL280 & RL280	MILL	Y/N	235	706310057A	11.42	4.00	6.72	2.50
FL280 & RL280	MILL	Y	400	706310063B	14.39	7.43	12.15	BLANK

FRAME SIZE	OPTIONAL AUXILIARY CONDUIT BOX DIMENSIONS (MAXIMUM)								
	XAB	XX	XY	PART NUMBER	FRAME SIZE	PART NUMBER			
FL210/FL180/FL160/FL132	7.38	4.25	4.25	602007-26-A	FL210/FL180/FL160/FL132	10.88	8.00	8.00	706310-3-B
FL250/FL180/FL160/FL132	8.44	4.25	4.25	602007-26-A	FL250/FL180/FL160/FL132	11.88	8.00	8.00	706310-3-B
FL280/FL180/FL160/FL132	9.12	4.25	4.25	602007-26-A	FL280/FL180/FL160/FL132	12.62	8.00	8.00	706310-3-B

- (1) 7/8" PIPE TAP
- (2) CUSTOMER TO PROVIDE WIRE TYPE CONDUIT.
- (3) DIM SA OR 1" DIM DN -40

TERMINAL BOX CAN BE ROTATED FOR LEAD INLET AT TOP, SIDES OR BOTTOM
TERMINAL BOX LOCATED ON OPPOSITE SIDE WHEN F-2, V-1, V-4, V-5, V-7,
OR C-1 MOUNTING IS SPECIFIED. BOX LOCATED ON TOP WHEN SPECIFIED.

050-677919

CUSTOMER IS RESPONSIBLE FOR DETERMINING THAT BALDOR'S PRODUCT WILL PERFORM SUITABLY IN THE INTENDED APPLICATION.

REV. DESC: ADD 706310-637 & 639 BOX	VERSION: 06	TDR: 000001180260
REV. LTR: F	REVISED: 11: 08: 56 10/26/2021	BY: RCGRWM
FILE: \RGG\00003\692		
MTL: -		

BALDOR - RELIANCE®	
DIM SHT NEMA RL210-RL280 FL180-FL280 IEC RDL132-RDL180	
SH 1 of 1	

422927-001



NOTE:
DATA TO BE SIZED
SO THAT IT FITS INTO
MATERIAL DECAL
DIMENSIONS. MAKE
LETTERS & NUMBERS
AS LARGE AS POSSIBLE.

MATERIAL: CERAMATIC DGF-P4
PERMA GRIP ADHESIVE

ALL LETTERS, NUMBERS
AND LINES TO BE BLACK
ON WHITE BACKGROUND.

422927-001

REV. DESC: CHANGE BACKGROUND COLOR FROM GOLD TO WHITE		
REV. LTR: B	VERSION: 02	TDR: 00000788708
FILE: \RGG\00000\203	REVISED: 08:09:29 03/04/2013	
MTL: -	BY: RGGWT	

BALDOR

EXTERNAL CONNECTION LABEL

SH 1 of 1