

ABB BALDOR RELIANCE III

Customer information packet IDDRPM251004

100HP, 1750, 460V, RL2578, DPFV, F1

Specifications

Enclosure	DPFV
Frame	RL2578Z
Frame Material	Exposed Laminations
Frequency	60.00 Hz
Output @ Frequency	100.000 HP @ 60 HZ
Phase	3
Synchronous Speed @ Frequency	1800 RPM @ 60 HZ
Voltage @ Frequency	460.0 V @ 60 HZ
Agency Approvals	CCSA US
Auxiliary Box	NO AUXILLARY BOX
Base Indicator	Rigid
Bearing Grease Type	Polyrex EM (-20F +300F)
Current @ Voltage	119.000 A @ 460.0 V
Duty Rating	CONT
Feedback Device	NO FEEDBACK
Frame Prefix	RL
Heater Indicator	No Heater
High Voltage Full Load Amps	119.0 a
Insulation Class	H
IP Rating	NONE
Motor Standards	NEMA
Mounting Arrangement	F1
Overall Length	36.67 IN
Product Family	General Industrial
Pulley End Bearing Type	Ball
Pulley Face Code	Standard
Service Factor	1.00
Shaft Diameter	2.124 IN
Shaft Ground Indicator	Shaft Grounding
Shaft Rotation	Reversible
Speed	1750 rpm
Starting Method	Full Voltage

Part Detail

Revision	C
Type	AC
Mech. spec.	
Base	
Status	PRD/A
Elec. spec.	L1821A
Layout	617218-051
Eff. date	02-24-2026
CD Diagram	422927-001
Poles	04
Leads	
Proprietary	False
Created date	11-02-2021

Thermal Device - Bearing

None

Thermal Device - Winding

Normally Closed Thermostat

Nameplate

000613006MY

	DUTY	HP	RPM	AMPS	VOLTS	HZ	
	CONT	100	1750	119	460	60	
	CONT	100	2000	118	460	68.5	
CAT.NO.	IDDRPM251004		SPEC. NO.	R25-A000-0363			
SER.NO		FR	RL2578Z	INSUL	H		
PH.	3	MAX SAFE SPEED	5000	AMB.	40	MIN. AMB.	-25
DESIGN NO.	L1821A	TYPE		ENCL.	DPG-FV		
S.F.	1.00		D.E. BRG.	65BC03JPP30A			
ENCL MOD		O.D.E. BRG.	50BC03JPP30A				
	IP23						

REL S.O.	-	VOLTS	460	ENCLOSURE	DPFV	WYE CONN EQ CKT OHMS PER PHASE			
FRAME	RL2578	AMPS	119	MAX SAFE RPM	5000	(AT BASE RATING, 25 °C)			
HP	100	DUTY	CONT	IM (AMPS)	33	R1	.0615	X1	.302
BASE SPEED	1750	S.F.	1.0	P.F. @NL/FL	.060/.884	R2	.0458	X2	.282
PHASE/HERTZ	3/60	AMB °C/INSUL	40/H	WK ² (Lb-Ft ²)	4.2			XM	8.29

RATED FULL LOAD DATA

	RPM	HP	TORQUE LB-FT	FUND VOLTS	FREQ-HZ	AMPS
BASE SPEED	1748	100	300	460	60	119
MAX SPEED	1995	100	263	460	68.5	118
MIN SPEED	0	0	0	21.0	1.73	119

LOAD PERFORMANCE AT BASE SPEED

	RPM	HP	TORQUE LB-FT	FUND VOLTS	FREQ-HZ	AMPS
NO LOAD	1800	0	0	460	60	32.2
1/4	1789	25.0	73	460	60	43.3
1/2	1776	50.1	148	460	60	64.2
3/4	1763	75.0	223	460	60	89.7
FULL LOAD	1748	100	300	460	60	119
O/L	1711	147	451	460	60	184

REMARKS: TYPICAL DATA
CORRELATED DATA

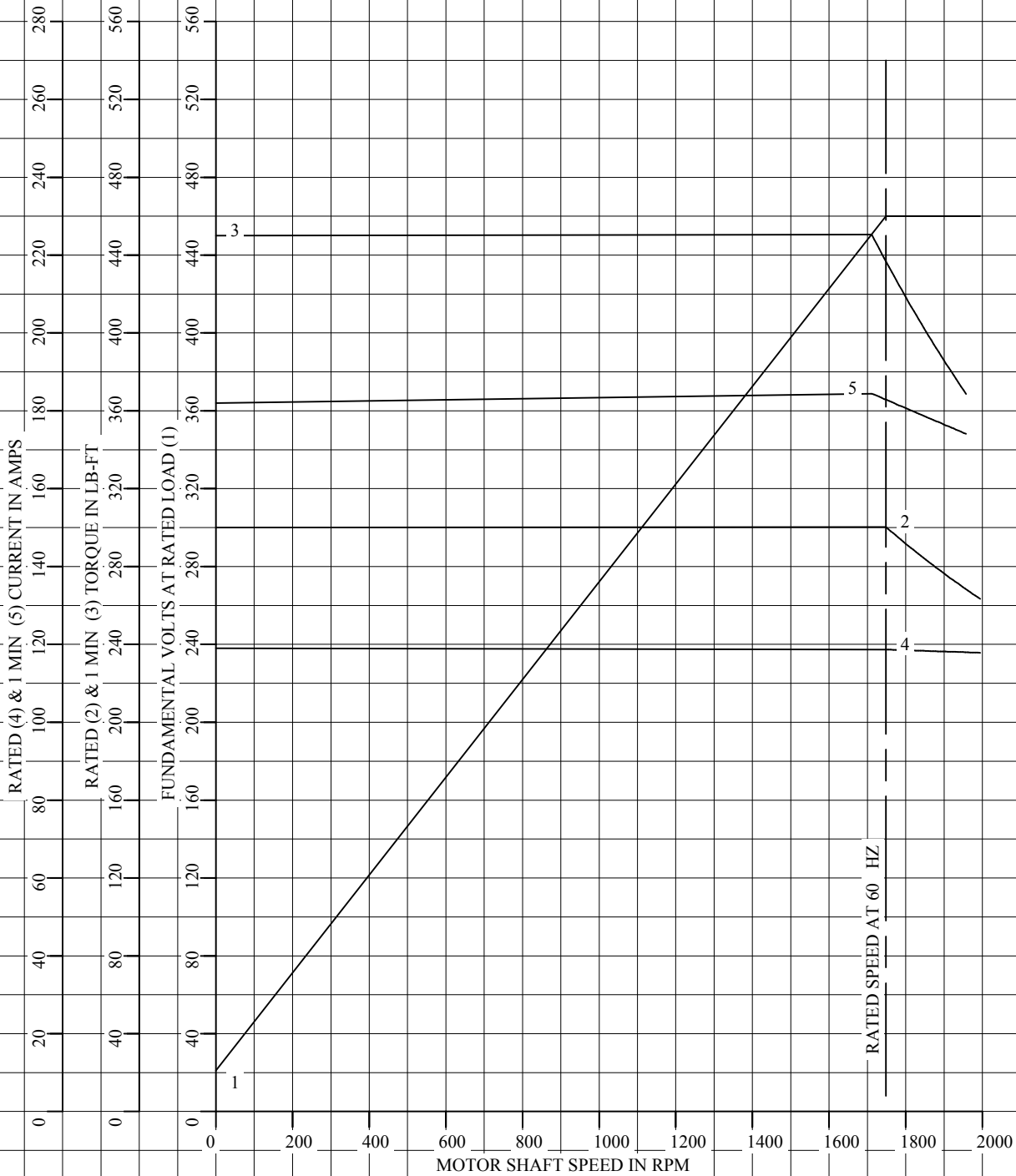


DR. BY M. ORDERS
 CK. BY B. GRANT
 APP. BY T. EVON
 DATE 05/23/00

**A-C MOTOR
PERFORMANCE DATA** L1821A
 ISSUE DATE 03/10/05

REL S.O.	-	VOLTS	460	ENCLOSURE	DPFV	WYE CONN EQ CKT OHMS PER PHASE	
FRAME	RL2578	AMPS	119	MAX SAFE RPM	5000	(AT BASE RATING, 25 °C)	
HP	100	DUTY	CONT	IM (AMPS)	33	R1	.0615 X1 .302
BASE SPEED	1750	S.F.	1.0	P.F. @NL/FL	.060/.884	R2	.0458 X2 .282
PHASE/HERTZ	3/60	AMB °C/INSUL	40/H	WK ² (Lb-Ft ²)	4.2		XM 8.29

CORRELATED DATA
VARIABLE SPEED AC MOTOR CURVES



REMARKS: TYPICAL DATA
DATA VALID FOR NAMEPLATE SPEED RANGE ONLY



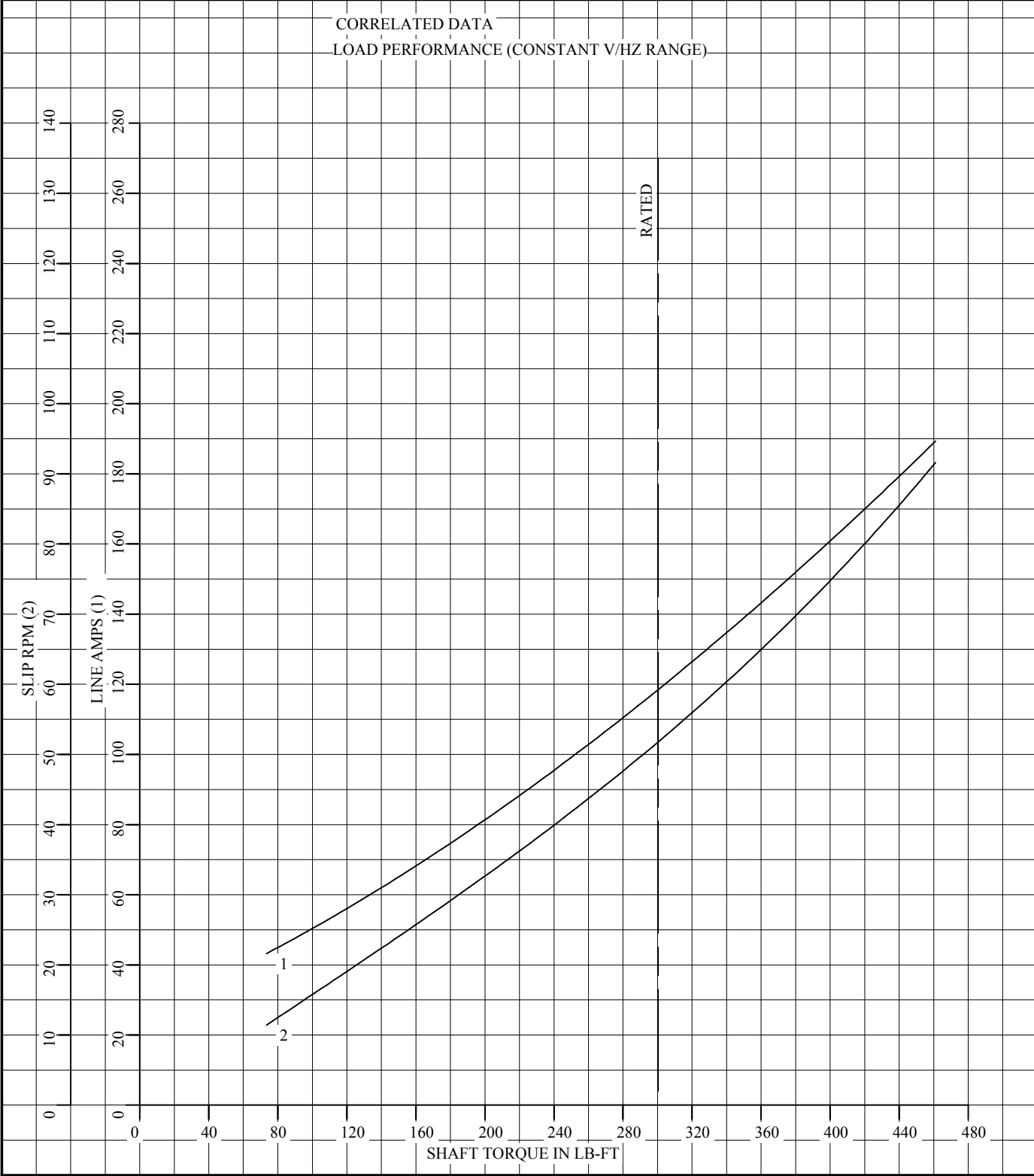
DR. BY M. ORDERS
CK. BY B. GRANT
APP. BY T. EVON
DATE 05/23/00

**A-C MOTOR
PERFORMANCE
CURVES**

L1821A
SH 1 OF 2
ISSUE DATE 03/10/05

REL S.O.	-	VOLTS	460	ENCLOSURE	DPFV	WYE CONN EQ CKT OHMS PER PHASE	
FRAME	RL2578	AMPS	119	MAX SAFE RPM	5000	(AT BASE RATING, 25 °C)	
HP	100	DUTY	CONT	IM (AMPS)	33	R1	.0615 X1 .302
BASE SPEED	1750	S.F.	1.0	P.F. @NL/FL	.060/.884	R2	.0458 X2 .282
PHASE/HERTZ	3/60	AMB °C/INSUL	40/H	WK ² (Lb-Ft ²)	4.2		XM 8.29

CORRELATED DATA
LOAD PERFORMANCE (CONSTANT V/Hz RANGE)



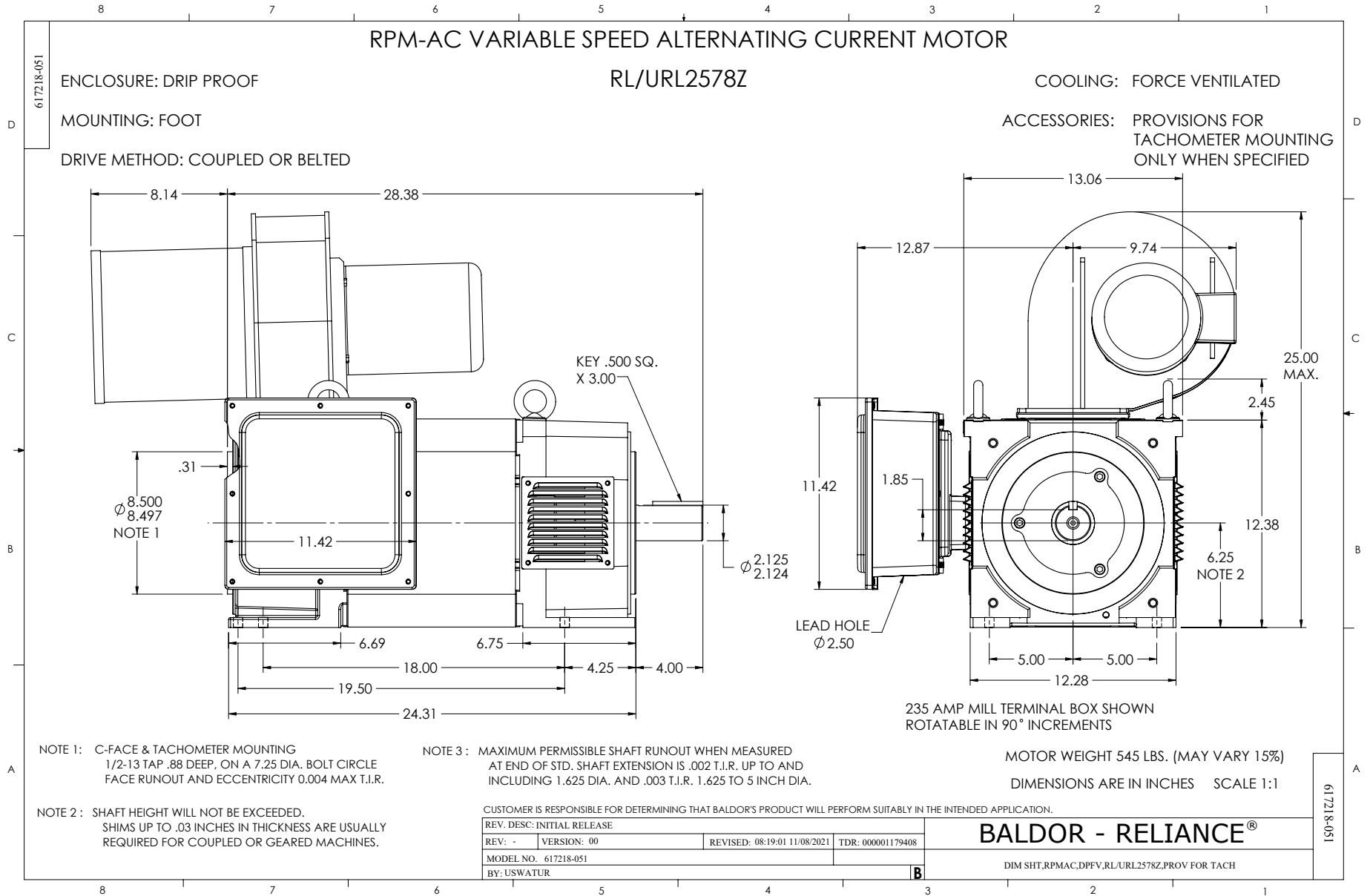
REMARKS: TYPICAL DATA
DATA VALID FOR NAMEPLATE SPEED RANGE ONLY



DR. BY M. ORDERS
CK. BY B. GRANT
APP. BY T. EVON
DATE 05/23/00

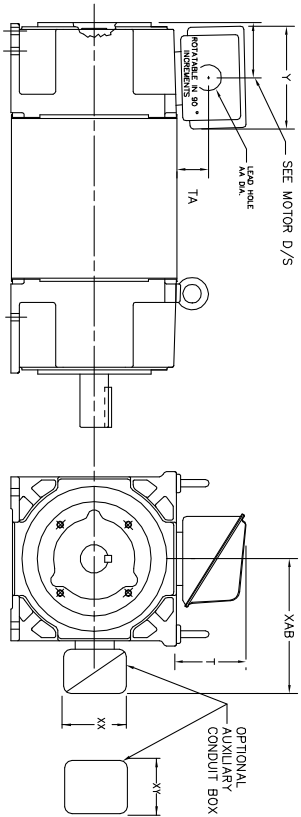
**A-C MOTOR
PERFORMANCE
CURVES**

L1821A
SH 2 OF 2
ISSUE DATE 03/10/05



INDUSTRIAL ALTERNATING CURRENT MOTORS
RPM AC

STEEL, CAST IRON, MILL AND TERMINAL BOARD CONDUIT BOX DIMENSIONS
NEMA FRAMES RL210 thru RL280 and IEC FRAMES RDL132 thru RDL180
NEMA FRAMES FL180 thru FL280 and IEC FRAMES FDL112 thru FDL180



FRAME	TYPE	TERMINAL STRIP	AMPS	C/BOX	Y	TA	T	AA
FL180	STEEL	N	40	706320003A	5.00	1.62	3.00	1.12
FL180	STEEL	N	75	706320003A	6.12	2.38	4.38	1.75/2.00
FL180	STEEL	N	208	706320007A	6.82	2.00	7.00	2.50/2.00
FL180	CAST IRON	N	40	706320003A	5.75	2.38	4.38	1.50/1.75
FL180 & FDL11	MILL	Y	100	706310028A	7.75	2.30	4.40	PC29/PG16
FL210 & RL210	STEEL	N	61	0754520009	6.34	2.00	4.12	1.75
FL210 & RL210	STEEL	N	121	075452001A	7.69	2.38	5.25	1.94
FL210 & RL210	STEEL	N	336	706320016A	9.00	4.12	8.42	4.89
FL210 & RL210	CAST IRON	N	110	075460052B	7.25	2.50	5.25	1.5 TAP
FL210 & RL210	MILL	Y	100	7063100229A	7.75	2.30	4.40	PC29/PG16
FL210 & RL210	MILL	Y	160	706310056A	9.00	3.06	5.40	PC36/PG16
FL210 & RL210	MILL	Y/N	235	7063100637A	11.42	4.00	6.72	2.50
FL250 & RL250	STEEL	N	61	0754520009	6.34	2.00	4.12	1.75
FL250 & RL250	STEEL	N	121	075452001A	7.69	2.38	5.25	1.94
FL250 & RL250	STEEL	N	336	706320016A	9.00	4.12	8.42	4.89
FL250 & RL250	CAST IRON	N	110	075460052B	7.25	2.50	5.25	1.5 TAP
FL250 & RL250	CAST IRON	N	210	706320013A	10.50	4.88	9.00	4.0 TAP
FL250 & RL250	MILL	Y	100	7063100229A	7.75	2.30	4.40	PC29/PG16
FL250 & RL250	MILL	Y	160	706310056A	9.00	3.06	5.40	PC36/PG16
FL250 & RL250	MILL	Y/N	235	7063100637A	11.42	4.00	6.72	2.50
FL250 & RL250	MILL	Y	400	7063100638B	14.39	7.43	12.15	BLANK
FL280 & RL280	STEEL	N	160	706310056A	9.00	3.06	5.40	PC36/PG16
FL280 & RL280	STEEL	N	300	706320016A	14.62	7.56	12.70	5.00
FL280 & RL280	STEEL	N	500	702565001C	14.62	7.56	12.70	5.00
FL280 & RL280	CAST IRON	N	140	706320012B	9.25	4.81	8.56	3.0 TAP
FL280 & RL280	CAST IRON	N	210	706320013A	10.50	4.88	9.00	4.0 TAP
FL280 & RL280	CAST IRON	N	510	706320014D	15.00	7.56	12.81	5.0 TAP
FL280 & RL280	MILL	Y	100	706310056A	7.75	2.30	4.40	PC29/PG16
FL280 & RL280	MILL	Y	160	706310056B	9.00	3.06	5.40	PC36/PG16
FL280 & RL280	MILL	Y/N	235	7063100637A	11.42	4.00	6.72	2.50
FL280 & RL280	MILL	Y	400	7063100638B	14.39	7.43	12.15	BLANK

FRAME SIZE	OPTIONAL AUXILIARY CONDUIT BOX DIMENSIONS (MAXIMUM)								
	XAB	XX	XY	PART NUMBER	FRAME SIZE	PART NUMBER			
FL180/FL180A/FL180B	7.38	4.25	4.25	602007-26-A	FL180/FL180A/FL180B	10.88	8.00	8.00	706310-3-B
FL210/FL210A/FL210B	8.44	4.25	4.25	602007-26-A	FL210/FL210A/FL210B	11.88	8.00	8.00	706310-3-B
FL250/FL250A/FL250B	9.12	4.25	4.25	602007-26-A	FL250/FL250A/FL250B	12.62	8.00	8.00	706310-3-B

- (1) 1/4" PIPE CONDUIT.
- (2) 1/2" PIPE TAP.
- (3) CUSTOMER TO PROVIDE THE LEAD WIRE CONDUIT.
- (4) 2" DIA. SA OR 1" DIA. DN -40.

TERMINAL BOX CAN BE ROTATED FOR LEAD INLET AT TOP, SIDES OR BOTTOM.
TERMINAL BOX LOCATED ON OPPOSITE SIDE WHEN F-2, V-1, V-4, V-5, V-7,
OR C-1 MOUNTING IS SPECIFIED. BOX LOCATED ON TOP WHEN SPECIFIED.

CUSTOMER IS RESPONSIBLE FOR DETERMINING THAT BALDOR'S PRODUCT WILL PERFORM SUITABLY IN THE INTENDED APPLICATION.

REV. DESC: ADD 706310-637 & 639 BOX	VERSION: 06	TDR: 000001180260
REV. LTR: F	REVISED: 11: 08: 56 10/26/2021	BY: RCGRWM
FILE: \RGG\00003\692		
MTL: -		

BALDOR - RELIANCE®

DIM SHT NEMA RL210-RL280 FL180-FL280 IEC RDL132-RDL180

422927-001



NOTE:
DATA TO BE SIZED
SO THAT IT FITS INTO
MATERIAL DECAL
DIMENSIONS. MAKE
LETTERS & NUMBERS
AS LARGE AS POSSIBLE.

MATERIAL: CERAMATIC DGF-P4
PERMA GRIP ADHESIVE

ALL LETTERS, NUMBERS
AND LINES TO BE BLACK
ON WHITE BACKGROUND.

422927-001

REV. DESC: CHANGE BACKGROUND COLOR FROM GOLD TO WHITE		
REV. LTR: B	VERSION: 02	TDR: 00000788708
FILE: \RGG\00000\203	REVISED: 08:09:29 03/04/2013	
MTL: -	BY: RGGWT	

BALDOR

EXTERNAL CONNECTION LABEL

SH 1 of 1