

RPM-AC VARIABLE SPEED ALTERNATING CURRENT MOTOR

RL/URL2578Z

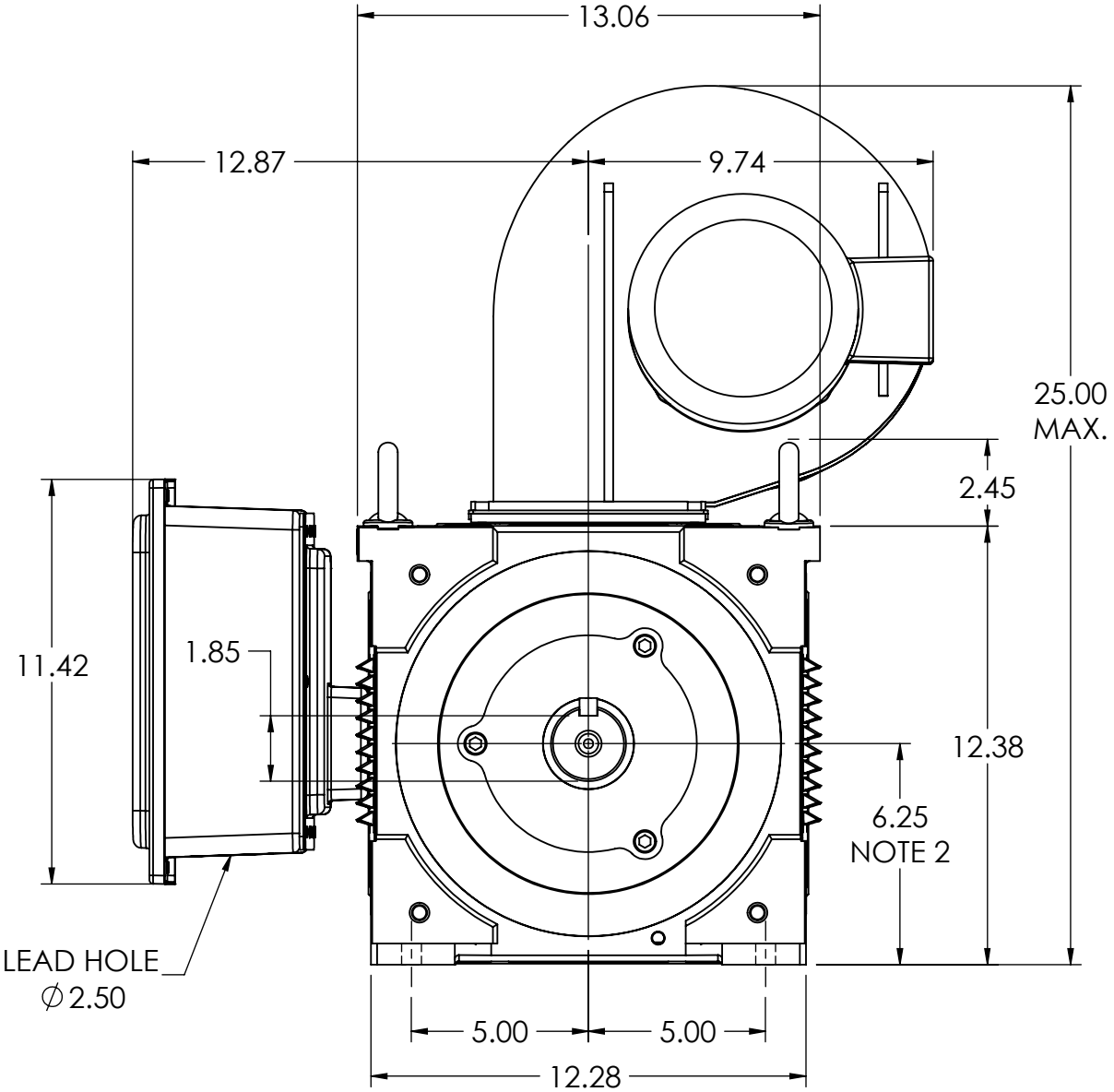
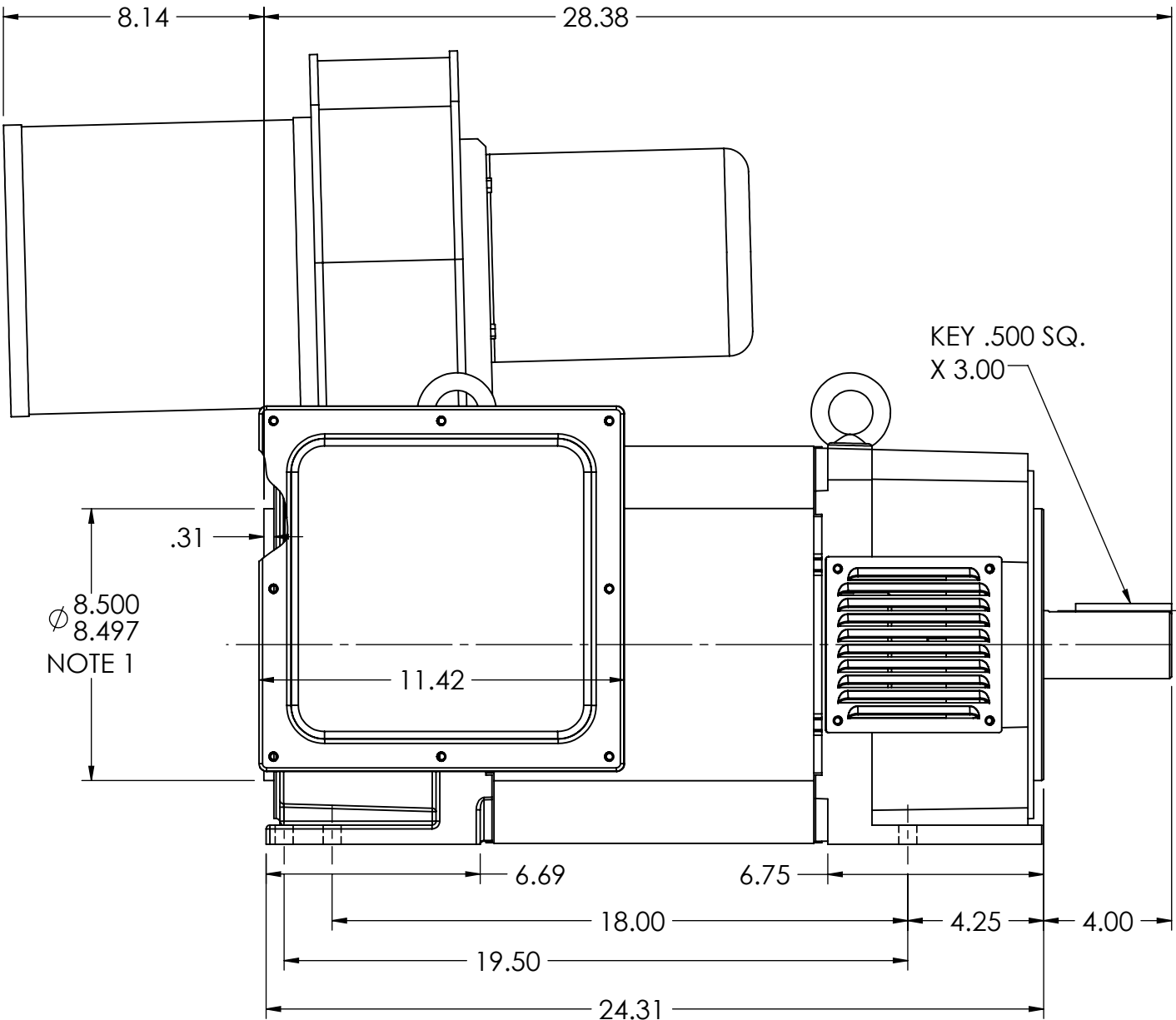
COOLING: FORCE VENTILATED

ACCESSORIES: PROVISIONS FOR
TACHOMETER MOUNTING
ONLY WHEN SPECIFIED

ENCLOSURE: DRIP PROOF

MOUNTING: FOOT

DRIVE METHOD: COUPLED OR BELTED



NOTE 1: C-FACE & TACHOMETER MOUNTING
1/2-13 TAP .88 DEEP, ON A 7.25 DIA. BOLT CIRCLE
FACE RUNOUT AND ECCENTRICITY 0.004 MAX T.I.R.

NOTE 2: SHAFT HEIGHT WILL NOT BE EXCEEDED.
SHIMS UP TO .03 INCHES IN THICKNESS ARE USUALLY
REQUIRED FOR COUPLED OR GEARED MACHINES.

NOTE 3: MAXIMUM PERMISSIBLE SHAFT RUNOUT WHEN MEASURED
AT END OF STD. SHAFT EXTENSION IS .002 T.I.R. UP TO AND
INCLUDING 1.625 DIA. AND .003 T.I.R. 1.625 TO 5 INCH DIA.

MOTOR WEIGHT 545 LBS. (MAY VARY 15%)

DIMENSIONS ARE IN INCHES SCALE 1:1

CUSTOMER IS RESPONSIBLE FOR DETERMINING THAT BALDOR'S PRODUCT WILL PERFORM SUITABLY IN THE INTENDED APPLICATION.

REV. DESC: INITIAL RELEASE			
REV: -	VERSION: 00	REVISED: 08:19:01 11/08/2021	TDR: 000001179408
MODEL NO. 617218-051			
BY: USWATUR		B	

BALDOR - RELIANCE®

DIM SHT,RPMAC,DPFV,RL/URL2578Z,PROV FOR TACH

617218-051

617218-051