

ABB BALDOR RELIANCE III

Customer information packet

IDCSWDM3615T

5HP, 1750RPM, 3PH, 60HZ, 184TC, 3646M, TEFC, F1

Class - None

Division - Not Applicable

Specifications

Enclosure	TEFC
Frame	184TC
Frame Material	Stainless Steel
Frequency	60.00 Hz
Haz Area Class and Group	None
Haz Area Division	Not Applicable
Motor Letter Type	Three Phase
Output @ Frequency	5.000 HP @ 60 HZ
Phase	3
Synchronous Speed @ Frequency	1800 RPM @ 60 HZ
Voltage @ Frequency	230.0 V @ 60 HZ 460.0 V @ 60 HZ
Agency Approvals	UR CSA
Ambient Temperature	40 °C
Auxiliary Box	NO AUXILLARY BOX
Auxiliary Box Lead Termination	None
Base Indicator	Rigid
Bearing Grease Type	Polyrex EM (-20F +300F)
Blower	None
Current @ Voltage	13.000 A @ 230.0 V 6.500 A @ 460.0 V
Design Code	B
Drip Cover	No Drip Cover
Duty Rating	CONT
Efficiency @ 100% Load	89.5 %
Electrically Isolated Bearing	Not Electrically Isolated
Feedback Device	NO FEEDBACK
Front Face Code	Standard
Front Shaft Indicator	None
Heater Indicator	No Heater
High Voltage Full Load Amps	6.5 a

Part Detail

Revision	R
Type	AC
Mech. spec.	36K201
Base	
Status	PRD/A
Elec. spec.	36WGS719
Layout	36LYK201
Eff. date	08-23-2023
CD Diagram	CD0005
Poles	04
Leads	9#16
Proprietary	False
Created date	06-04-2012

Insulation Class	H
Inverter Code	Inverter Duty
KVA Code	J
Lifting Lugs	No Lifting Lugs
Locked Bearing Indicator	Locked Bearing
Max Speed	6000 rpm
Motor Lead Exit	Ko Box
Motor Lead Quantity/Wire Size	9 @ 16 AWG
Motor Lead Termination	Flying Leads
Motor Standards	NEMA
Motor Type	3646M
Mounting Arrangement	F1
Number of Poles	4
Overall Length	18.06 IN
Power Factor	81
Product Family	Wash Down Paint Free
Pulley End Bearing Type	Ball
Pulley Face Code	C-Face
Pulley Shaft Indicator	Standard
Rodent Screen	None
Service Factor	1.00
Shaft Diameter	1.125 IN
Shaft Extension Location	Pulley End
Shaft Ground Indicator	No Shaft Grounding
Shaft Rotation	Reversible
Shaft Slinger Indicator	Shaft Slinger
Speed	1750 rpm
Speed Code	Single Speed
Starting Method	Direct on line
Thermal Device - Bearing	None
Thermal Device - Winding	Normally Closed Thermostat
Vibration Sensor Indicator	No Vibration Sensor
Winding Thermal 1	None
Winding Thermal 2	None

Nameplate

NP3956L				
CAT.NO.	IDCSWDM3615T			
SPEC.	36K201S719G1			
FRAME	184TC	H.P.	5 TE	
VOLTS	230/460			
MAG. CUR.	5.8/2.9	F.L. AMPS	13/6.5	
R.P.M.	1750	R.P.M. MAX	6000	
HZ.	60	PH.	3	CLASS H
SER.F.	1.00	DES.	B	SL HZ 1.7
NEMA NOM. EFF.	89.5	WK2	0.428	
BLWR V	PH	HZ	AMPS	
RATING	40C AMB-CONT			
DE BRG	6206	ODE BRG	6205	
CC	010A	SN		



AC Induction Motor Performance Data
 Record # 38663
 Typical performance - not guaranteed values

Winding: 36WGS719	Type: 3646M	Enclosure: TEFC
--------------------------	--------------------	------------------------

Nameplate Data				General Characteristics at 460 V, 60 Hz: High Volt Connection	
Rated Output (HP)	5			Full Load Torque	15.2 LB-FT
Volts	230/460			Start Configuration	DOL
Full Load Amps	13/6.5			Break Down Torque	49.7 LB-FT
R.P.M.	1750			Pull-Up Torque	27.7 LB-FT
Hz	60	Phase	3	Locked-rotor Torque	32.3 LB-FT
NEMA Design Code	B	KVA Code	J	Starting Current	48.3 Amps
Service Factor	1			No-load Current	2.91 Amps
NEMA Nom. Eff.	89.5	P.F.	81	Line-line Res. @ 25°C.	2.3457 Ohms
Rating - Duty	40C AMB-CONT			Temp. Rise @ Rated Load	87°C
S.F. Amps				Temp. Rise @ S.F. Load	

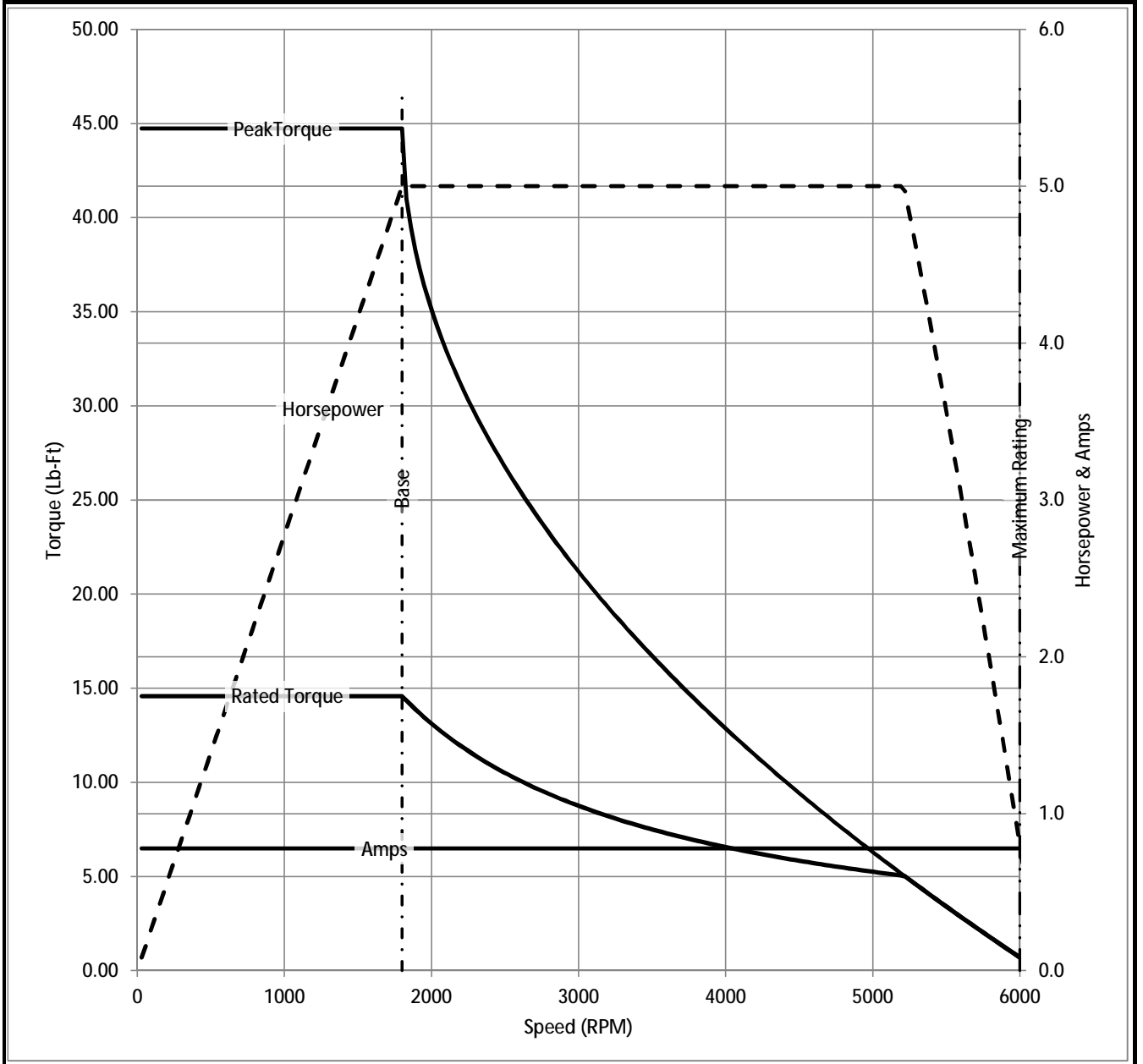
Load Characteristics at 460 Volts, 60 Hz, 5 HP

% of Rated Load	25	50	75	100	125	150	S.F.
Power Factor	42	64	75	81	83	84	
Efficiency	86.6	90.5	90.7	89.8	88.4	86.5	
Speed	1788.2	1775.9	1762.8	1747.9	1731.9	1713.7	
Line Amperes	3.27	4.1	5.2	6.49	8.02	9.69	

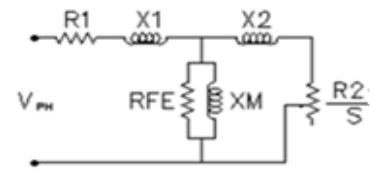
Baldor Electric Company Fort Smith, Arkansas



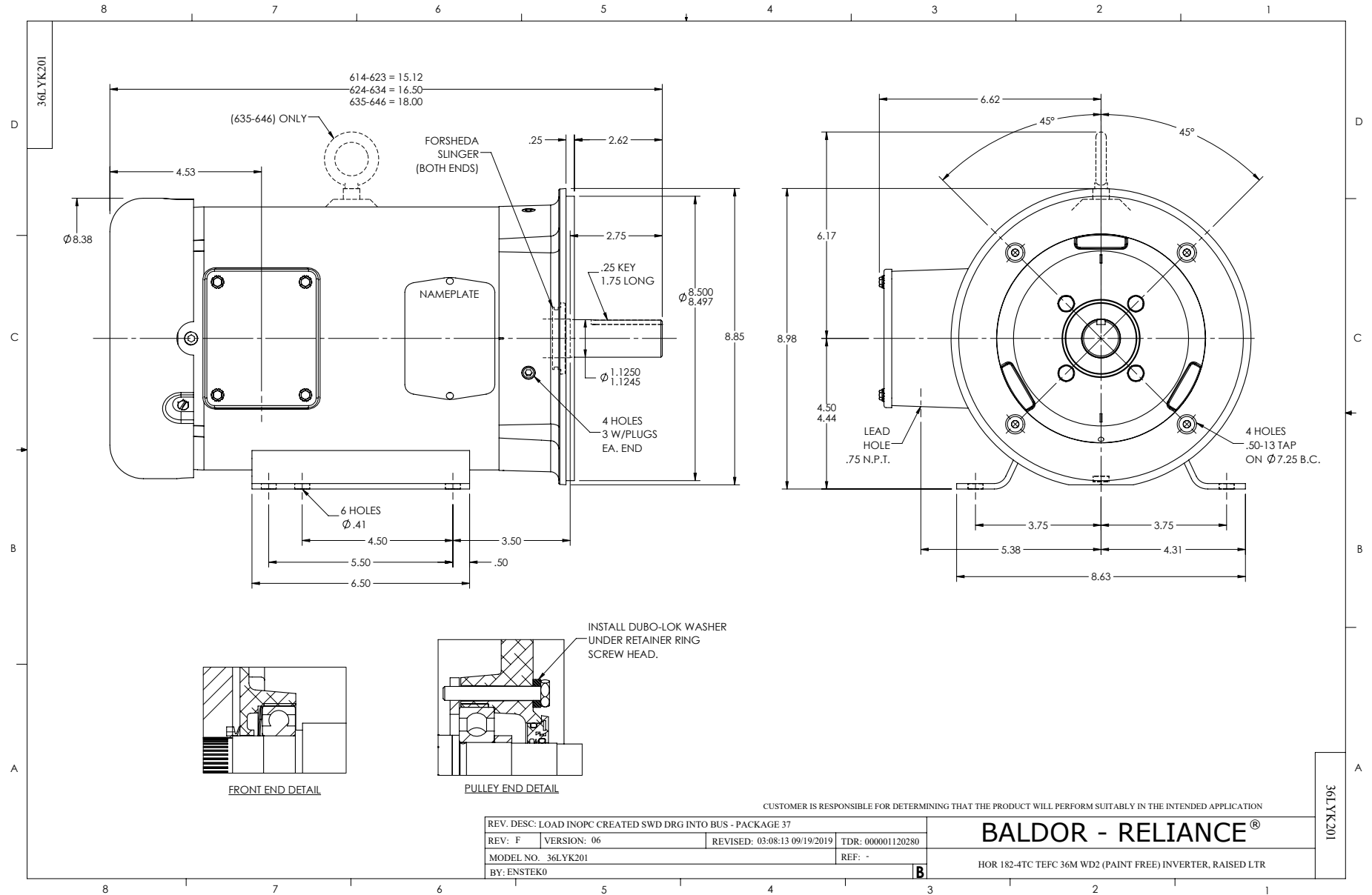
Catalog	IDCSWDM3615T	NP VOLTS	230/460	ENCLOSURE	TEFC	WYE CONN EQ CKT OHMS PER PHASE (BASE RATING, 20C)			
FRAME	184TC	NP AMPS	13/6.5	Base Volts	460	R1	1.140	X1	3.646
HP	5 HP	DUTY	Cont	Base AMPS	6.49	R2	0.901	X2	3.239
BASE SPEED	1800	MAX SAFE RPM	6000	Slip Hz	1.73			XM	84.471
PHASE/HZ	3/60	AMB ⁰ C/INSUL	40/H	WK ² (lb-ft ²)	0.428				



Remarks: Calculated Data



<p>A MEMBER OF THE ABB GROUP</p>	DR BY	ENR	A-C MOTOR PERFORMANCE CURVES	36K201S719G1
	CK BY			
	APP BY	ENR		
	DATE	3/6/2013		
			ISSUE DATE	3/6/2013



CD0005



LOW VOLTAGE
(2Y)



LINE

HIGH VOLTAGE
(1Y)



LINE

NOTES:

1. INTERCHANGE ANY TWO LINE LEADS TO REVERSE ROTATION.
2. OPTIONAL THERMOSTATS ARE PROVIDED WHEN SPECIFIED.
3. ACTUAL NUMBER OF INTERNAL PARALLEL CIRCUITS MAY BE A MULTIPLE OF THOSE SHOWN ABOVE.
4. LEAD COLORS ARE OPTIONAL. LEADS MUST ALWAYS BE NUMBERED AS SHOWN.

CD0005

REV. DESC: REVISE TO SHOW OPTIONAL COLORS			
REV. LTR: E	BY: JLP	REVISED: 01/19/99 10:15	TDR: 0171435
S00000		FILE: AAA00005140	MDL: -
		MTL: -	

BALDOR ELECTRIC Co.

3PH, DV, 9 LEADS