

**BALDOR • RELIANCE**

---

# Customer information packet

## IDCSWDM3542

.75HP, 1765RPM, 3PH, 60HZ, 56C, 3514M, TENV, F1

Class - None

Division - Not Applicable

## Specifications

Enclosure	TENV
Frame	56C
Frame Material	Stainless Steel
Frequency	60.00 Hz
Haz Area Class and Group	None
Haz Area Division	Not Applicable
Motor Letter Type	Three Phase
Output @ Frequency	.750 HP @ 60 HZ
Phase	3
Synchronous Speed @ Frequency	1800 RPM @ 60 HZ
Voltage @ Frequency	208.0 V @ 60 HZ 230.0 V @ 60 HZ 460.0 V @ 60 HZ
Agency Approvals	CSA UR
Ambient Temperature	40 °C
Auxillary Box	No Auxillary Box
Auxillary Box Lead Termination	None
Base Indicator	Rigid
Bearing Grease Type	Polyrex EM (-20F +300F)
Blower	None
Current @ Voltage	2.420 A @ 230.0 V 2.420 A @ 208.0 V 1.210 A @ 460.0 V
Design Code	B
Drip Cover	No Drip Cover
Duty Rating	CONT
Efficiency @ 100% Load	82.5 %
Electrically Isolated Bearing	Not Electrically Isolated
Feedback Device	NO FEEDBACK
Front Shaft Indicator	None
Heater Indicator	No Heater

## Part detail

Revision	C
Type	AC
Mech. spec.	35S638
Base	
Status	PRD/A
Elec. spec.	35WGG069
Layout	35LYS638
Eff. date	06-28-2023
CD Diagram	CD0005
Poles	04
Leads	9#18
Proprietary	False
Created date	03-11-2022

High Voltage Full Load Amps	1.2 a
Insulation Class	H
Inverter Code	Inverter Duty
KVA Code	K
Lifting Lugs	No Lifting Lugs
Locked Bearing Indicator	Locked Bearing
Max Speed	6000 rpm
Motor Lead Quantity/Wire Size	9 @ 18 AWG
Motor Lead Termination	Flying Leads
Motor Standards	NEMA
Motor Type	3514M
Mounting Arrangement	F1
Number of Poles	4
Overall Length	11.06 IN
Power Factor	74
Product Family	Wash Down Paint Free
Pulley End Bearing Type	Sealed Bearing
Pulley Face Code	C-Face
Pulley Shaft Indicator	Standard
Rodent Screen	None
Service Factor	1.00
Shaft Diameter	0.625 IN
Shaft Ground Indicator	No Shaft Grounding
Shaft Rotation	Reversible
Shaft Slinger Indicator	No Slinger
Speed	1765 rpm
Speed Code	Single Speed
Starting Method	Direct on line
Thermal Device - Bearing	None
Thermal Device - Winding	Normally Closed Thermostat
Vibration Sensor Indicator	No Vibration Sensor
Winding Thermal 1	None
Winding Thermal 2	None

**Nameplate**

<b>NP1608L</b>				
<b>CAT NO</b>	IDCSWDM3542			
<b>SPEC.</b>	35S638G069G1			
<b>FRAME</b>	56C	<b>HP</b>	.75 TE	
<b>VOLTS</b>	208-230/460			
<b>MAG CUR</b>	1.28-1.47/.73	<b>FLA</b>	2.36-2.28/1.14	
<b>RPM</b>	1765	<b>RPM MAX</b>	6000	
<b>HZ</b>	60	<b>PH</b>	3	<b>CLASS</b> H
<b>SER.F.</b>	1.00	<b>DES</b>	B	<b>SL HZ</b> 1.2
<b>NEMA-NOM-EFF</b>	82.5	<b>WK2</b>	0.101	
<b>BLWR V</b>	<b>PH</b>	<b>HZ</b>	<b>A</b>	
<b>RATING</b>	40C AMB-CONT			
<b>DE BRG</b>	6205	<b>ODE BRG</b>	6203	
<b>CC</b>	<b>SN</b>			

**AC Induction Motor Performance Data**

Record # 87334

Typical performance - not guaranteed values

<b>Winding: 35WGG069-R017</b>		<b>Type: 3514M</b>		<b>Enclosure: TENV</b>	
<b>Nameplate Data</b>			<b>460 V, 60 Hz: High Voltage Connection</b>		
<b>Rated Output (HP)</b>	.75	<b>Full Load Torque</b>	2.24 LB-FT		
<b>Volts</b>	208-230/460	<b>Start Configuration</b>	direct on line		
<b>Full Load Amps</b>	2.42/1.21	<b>Breakdown Torque</b>	8 LB-FT		
<b>R.P.M.</b>	1765	<b>Pull-up Torque</b>	4.4 LB-FT		
<b>Hz</b>	60 <b>Phase</b>	3	<b>Locked-rotor Torque</b>	5.1 LB-FT	
<b>NEMA Design Code</b>	<b>B KVA Code</b>	K	<b>Starting Current</b>	8.4 A	
<b>Service Factor (S.F.)</b>		1	<b>No-load Current</b>	0.85 A	
<b>NEMA Nom. Eff.</b>	82.5 <b>Power Factor</b>	74	<b>Line-line Res. @ 25°C</b>	30.3 Ω	
<b>Rating - Duty</b>	40C AMB-CONT		<b>Temp. Rise @ Rated Load</b>	59°C	
			<b>Locked-rotor Power Factor</b>	66.8	
			<b>Rotor inertia</b>	0.101 lb-ft <sup>2</sup>	

**Load Characteristics 460 V, 60 Hz, 0.75 HP**

<b>% of Rated Load</b>	<b>25</b>	<b>50</b>	<b>75</b>	<b>100</b>	<b>125</b>	<b>150</b>
<b>Power Factor</b>	30	48	61	70	77	81
<b>Efficiency</b>	68.4	79.2	82.1	82.9	82.4	81.1
<b>Speed</b>	1791	1783	1775	1766	1757	1745
<b>Line amperes</b>	0.87	0.95	1.06	1.21	1.4	1.61

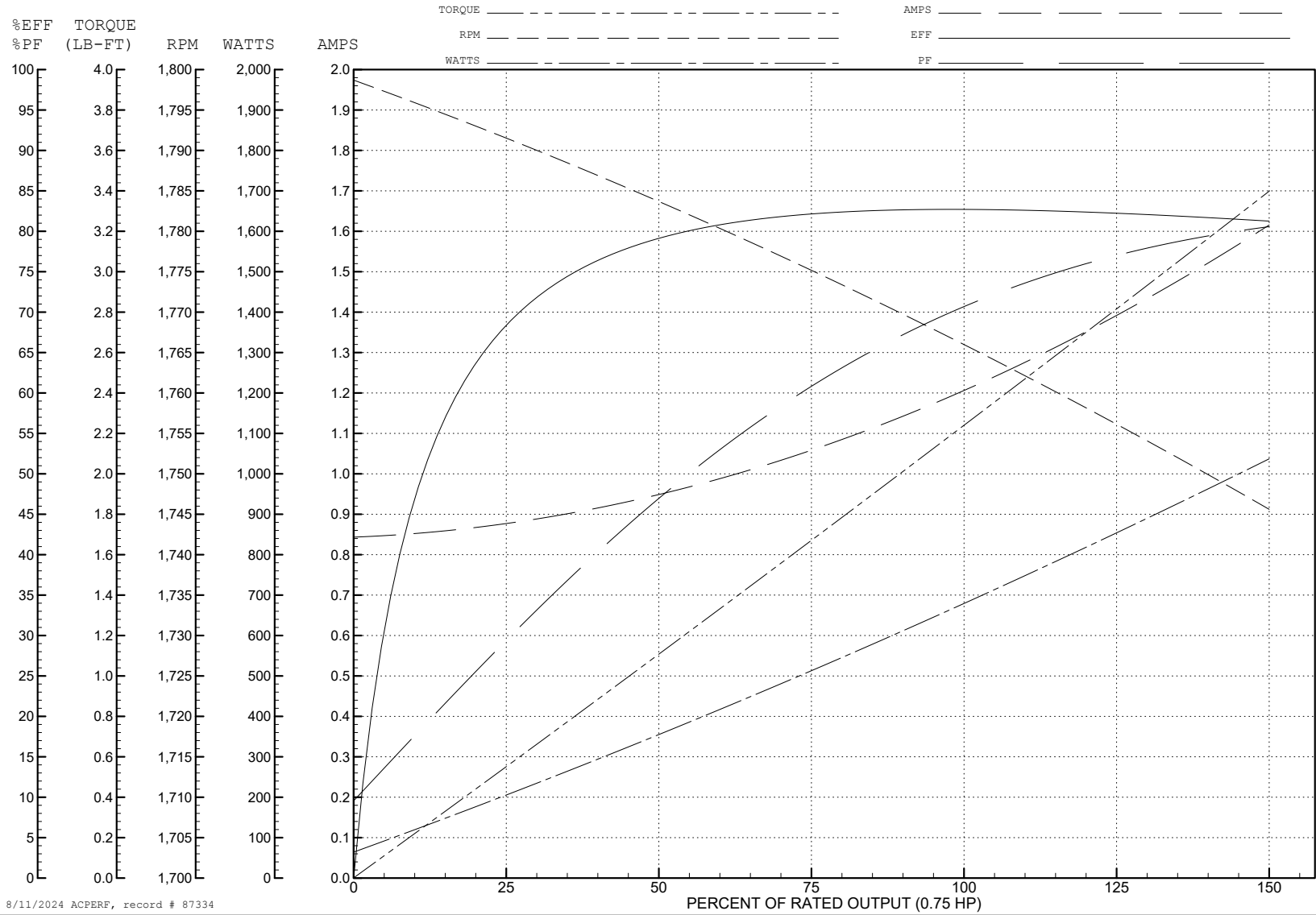
ABB Motors and Mechanical Inc.

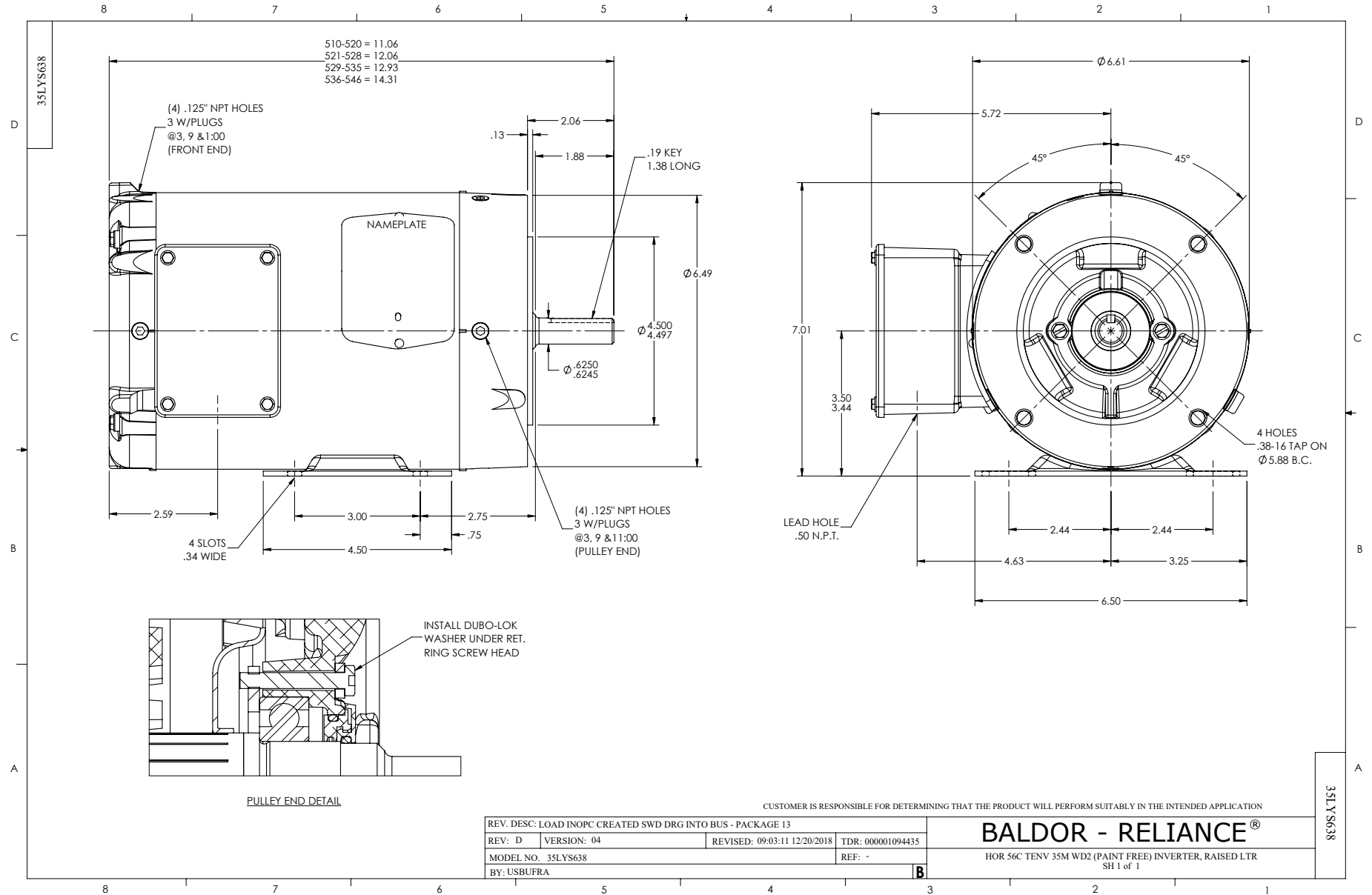
WINDING # 35WGG069

0.75 HP 3 PH 60 HZ 1765 RPM 460 V 3514M

Typical performance - not guaranteed values.

TORQUES (LB-FT) : PO=8 PU=4.4 LR=5.1 LRA=8.4





CD0005

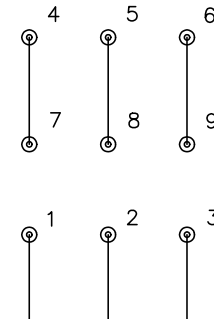


LOW VOLTAGE  
(2Y)



LINE

HIGH VOLTAGE  
(1Y)



LINE

NOTES:

1. INTERCHANGE ANY TWO LINE LEADS TO REVERSE ROTATION.
2. OPTIONAL THERMOSTATS ARE PROVIDED WHEN SPECIFIED.
3. ACTUAL NUMBER OF INTERNAL PARALLEL CIRCUITS MAY BE A MULTIPLE OF THOSE SHOWN ABOVE.
4. LEAD COLORS ARE OPTIONAL. LEADS MUST ALWAYS BE NUMBERED AS SHOWN.

CD0005

REV. DESC: REVISE TO SHOW OPTIONAL COLORS			
REV. LTR: E	BY: JLP	REVISED: 01/19/99 10:15	TDR: 0171435
S00000		FILE: AAA00005140	MDL: -
		MTL: -	

**BALDOR ELECTRIC Co.**

3PH, DV, 9 LEADS