

RPM-AC FINNED FRAME VARIABLE SPEED ALTERNATING CURRENT MOTOR  
FL2873Z

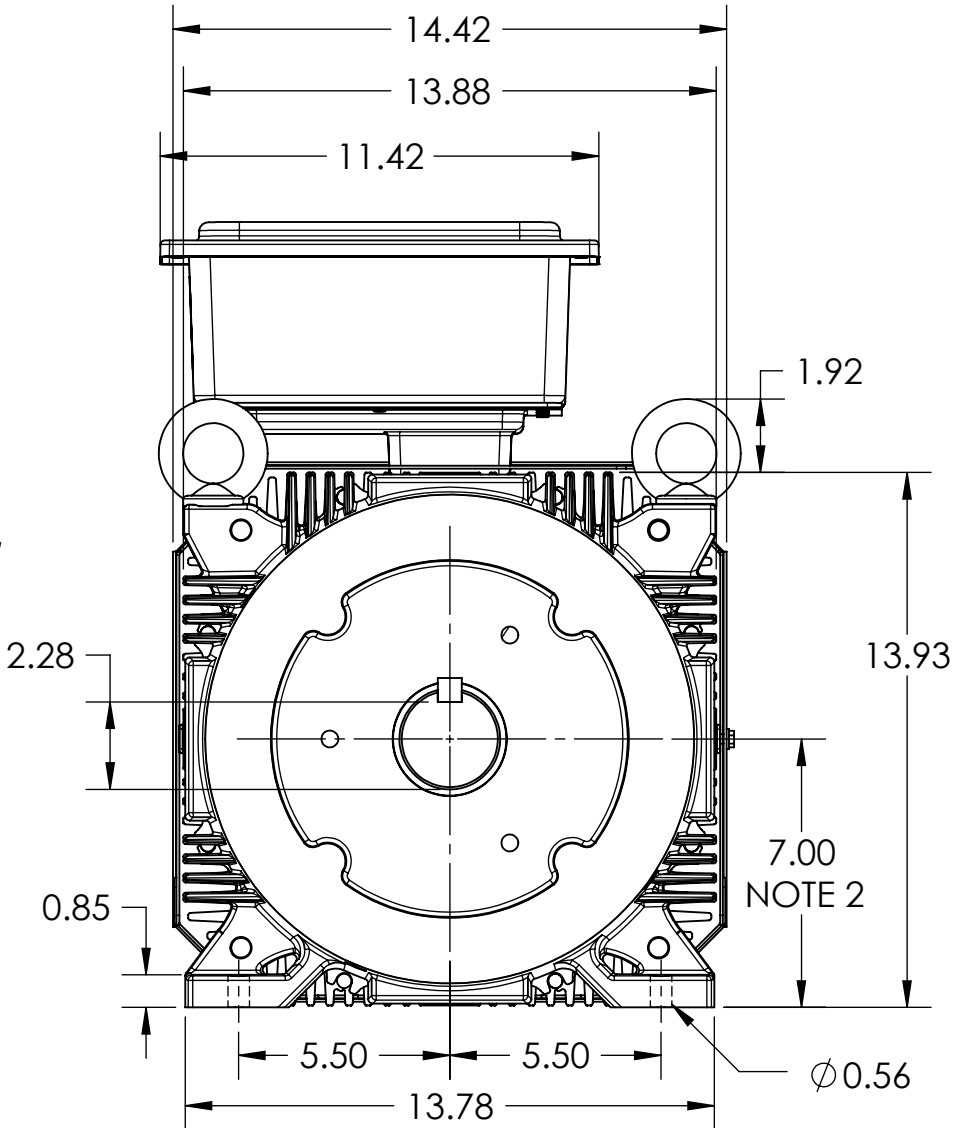
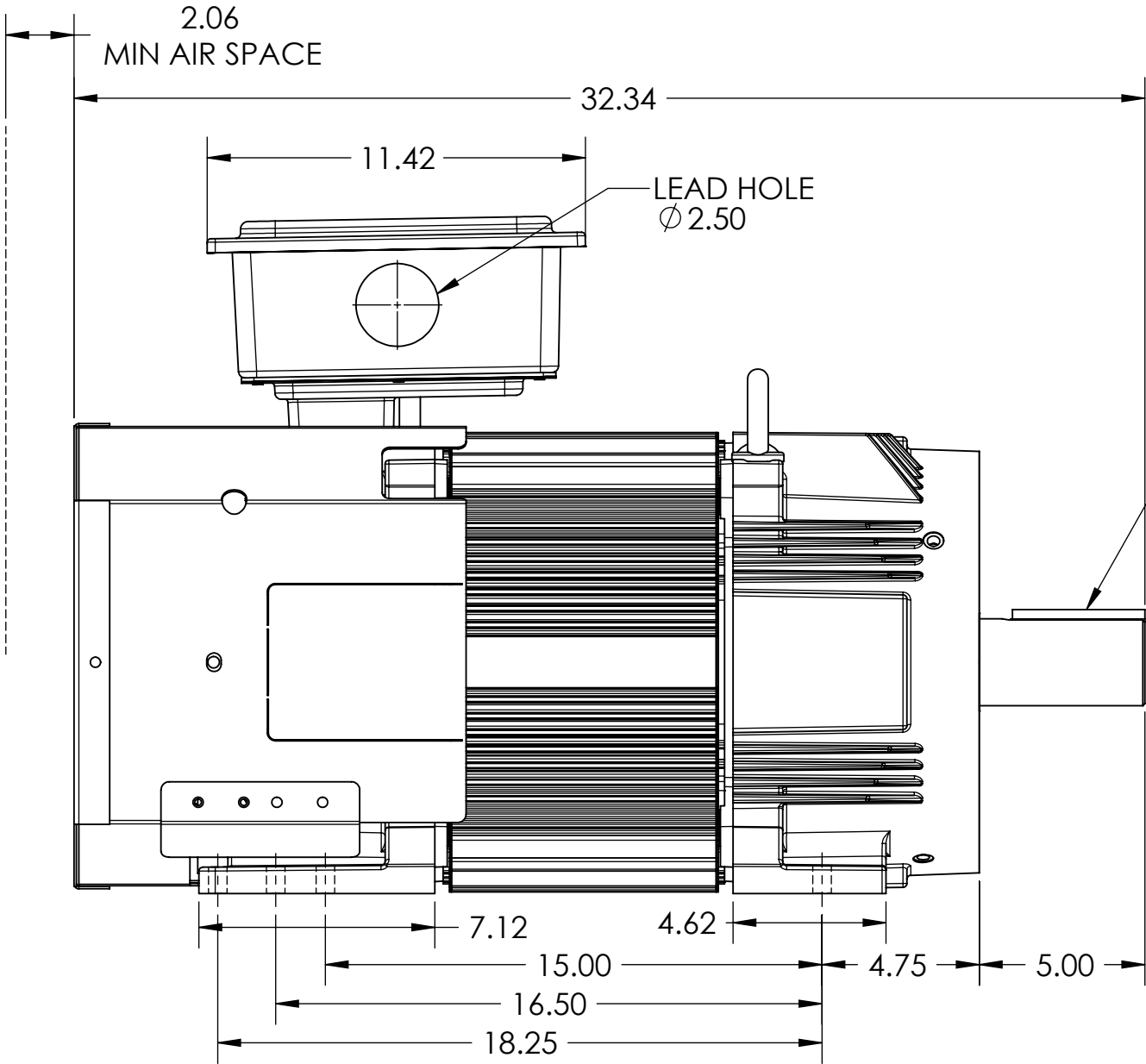
ENCLOSURE: TOTALLY ENCLOSED

MOUNTING: FOOT

DRIVE METHOD: COUPLED OR BELTED

COOLING: FAN COOLED

ACCESSORIES: PROVISIONS FOR  
TACHOMETER MOUNTING  
ONLY WHEN SPECIFIED



235 AMP STEEL TERMINAL BOX SHOWN  
ROTATABLE IN 90° INCREMENTS

DIMENSIONS ARE IN INCHES  
MOTOR WEIGHT: 635 LBS. (MAY VARY 15%)

NOTE 1: O.D.E. C-FACE & TACHOMETER MOUNTING  
1/2-13 TAP, 1.00 DEEP, ON A Ø 7.25 B.C.  
FACE RUNOUT AND ECCENTRICITY 0.004 MAX. T.I.R.

NOTE 2: SHAFT HEIGHT WILL NOT BE EXCEEDED  
SHIMS UP TO 0.03 INCHES IN THICKNESS ARE USUALLY  
REQUIRED FOR COUPLED OR GEARED MACHINES

CUSTOMER IS RESPONSIBLE FOR DETERMINING THAT THE PRODUCT WILL PERFORM SUITABLY IN THE INTENDED APPLICATION

REV. DESC: INITIAL RELEASE			
REV: -	VERSION: 00	REVISED: 08:40:49 10/20/2021	TDR: 000001179379
MODEL NO. 617512-073			REF: -
BY: USWATUR			<b>B</b>

**BALDOR - RELIANCE®**

DIM SHT FL2873Z RPM AC TEFC PROV FOR TACH FT MTG,F3 C/BOX

617512-073

617512-073