

# RPM-AC FINNED FRAME VARIABLE SPEED ALTERNATING CURRENT MOTOR

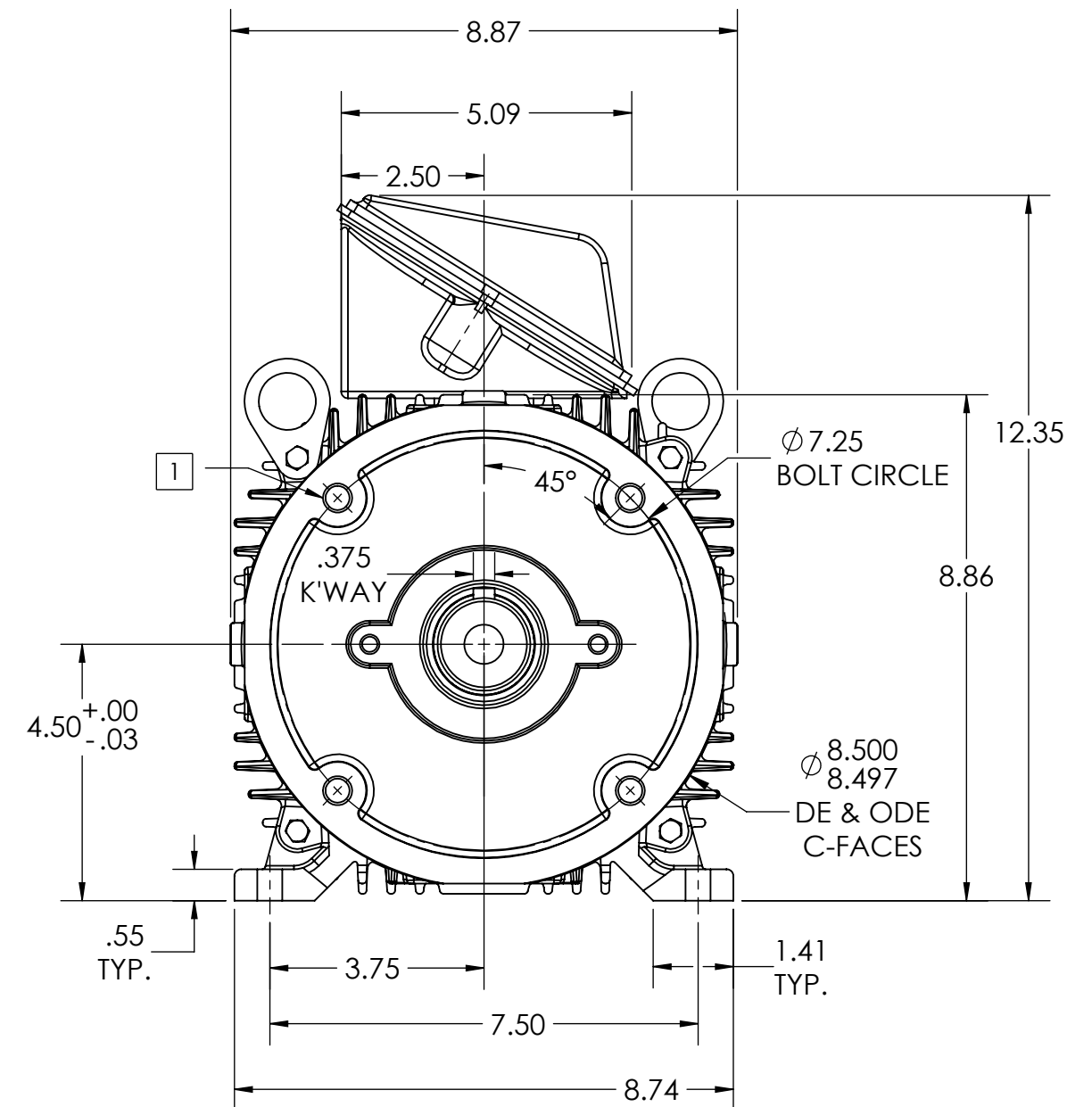
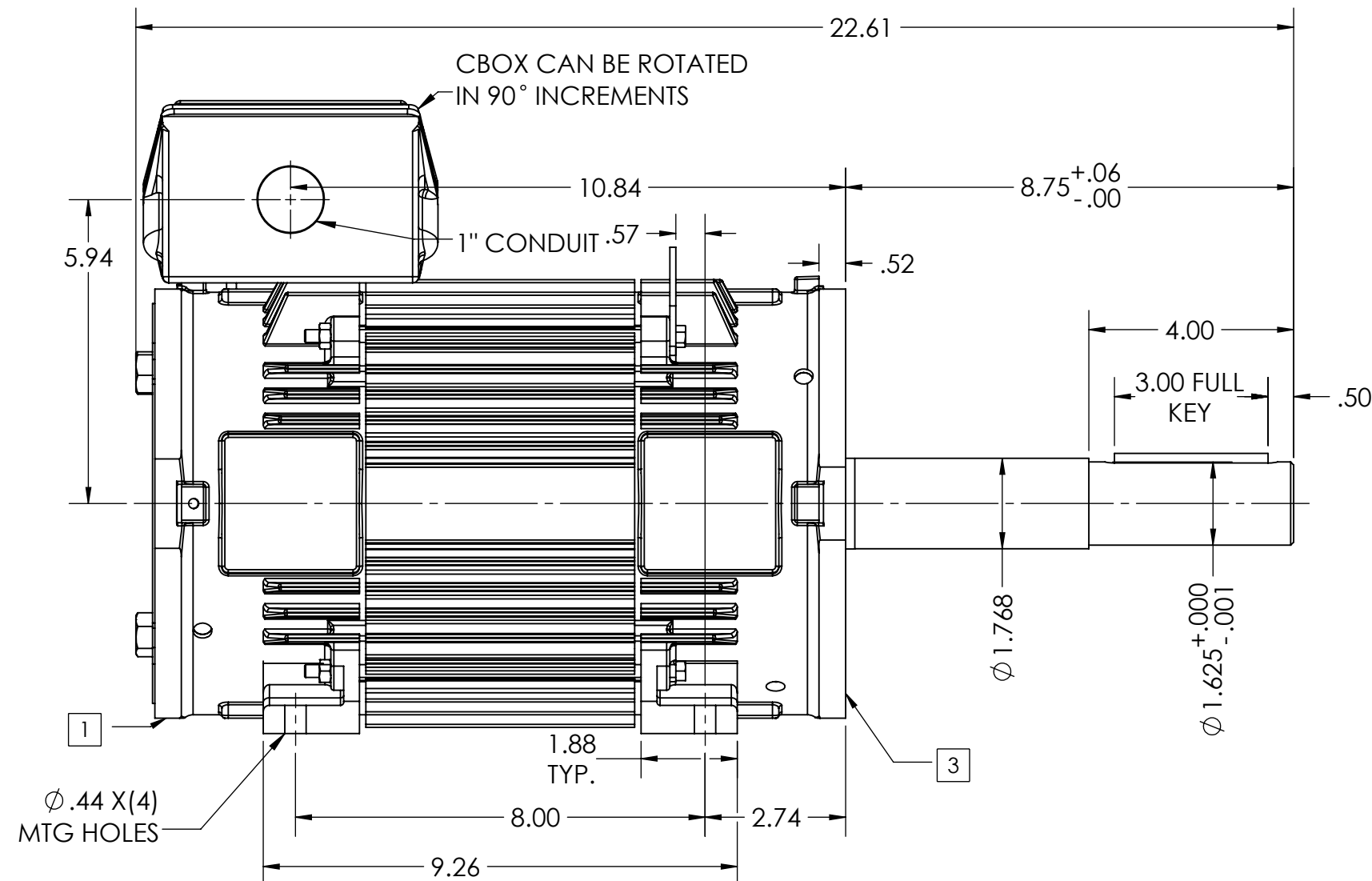
ENCLOSURE: TOTALLY ENCLOSED

FL1831CZ

COOLING: TEAO/TENV

MOUNTING: F3 FOOT/NEMA 180 C-FACE

DRIVE METHOD: DIRECT DRIVE



NOTES:

1. C-FACE & ODE TACH MOUNTING PROVISIONS = (4) 1/2-13 TAP X 1.0 DP
2. MOTOR WEIGHTS MAY VARY BY 15% DEPENDING ON RATING.
3. C-FACE FIT & FACE ECCENTRICITY = 0.004" T.I.R MAX
4. DIMENSIONS ARE IN INCHES
5. MAXIMUM PERMISSIBLE SHAFT RUNOUT WHEN MEASURED AT END OF SHAFT EXTENSION IS .003" T.I.R.
6. IF MOUNTING CLEARANCE DETAILS ARE REQUIRED, CONSULT FACTORY.

2 WEIGHT (LBS): 158.6

CUSTOMER IS RESPONSIBLE FOR DETERMINING THAT BALDOR'S PRODUCT WILL PERFORM SUITABLY IN THE INTENDED APPLICATION

REV. DESC: INITIAL RELEASE			
REV: -	VERSION: 00	REVISED: 04:28:17 03/06/2017	TDR: 000001018909
MODEL NO. 617226-328			REF: -
BY: MGHJMZ2			B

# BALDOR®

DIM SHT FL1831CZ RPM AC TENV FT / NEMA 180 C FACE MTG

SHEET NUMBER

1 OF 1

617776-378