

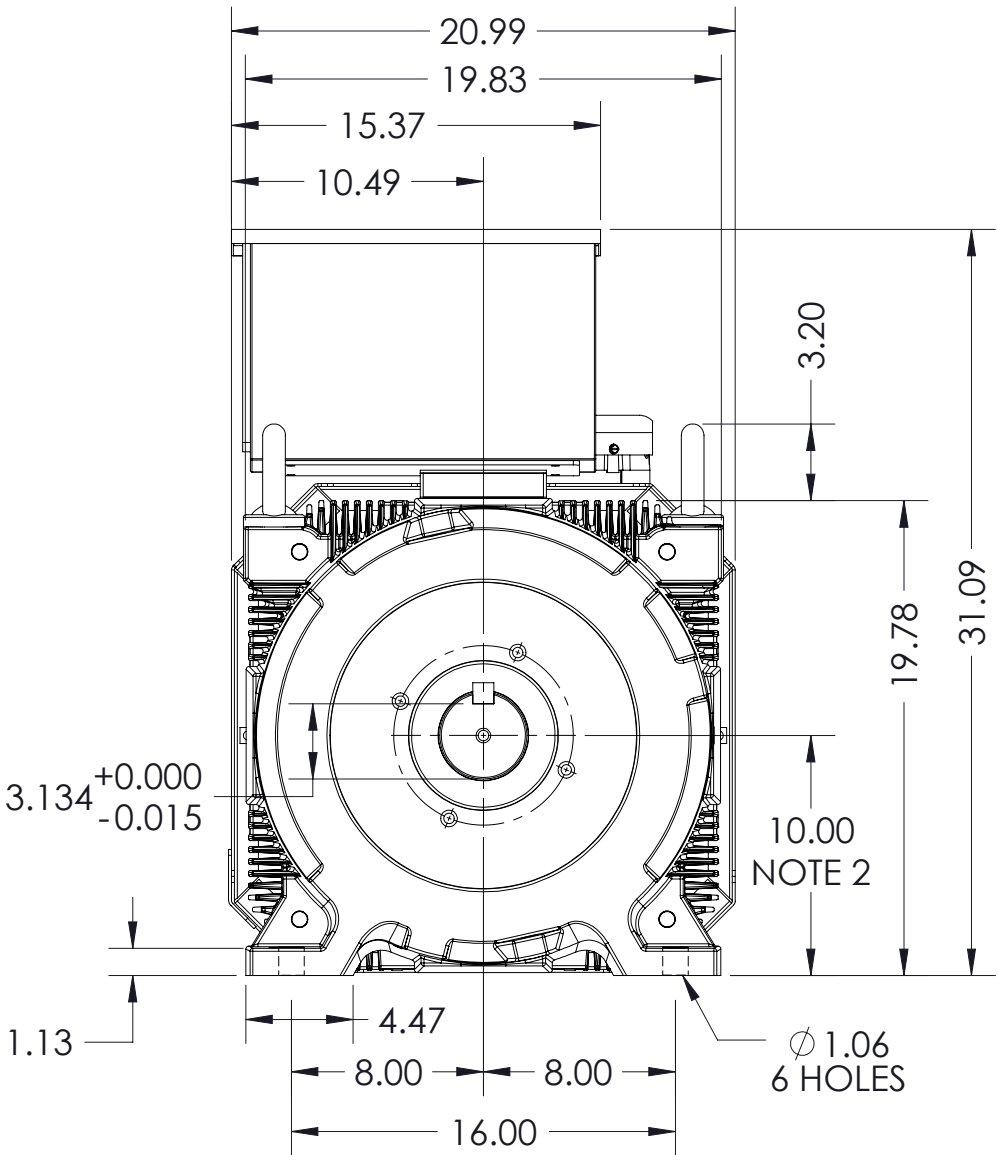
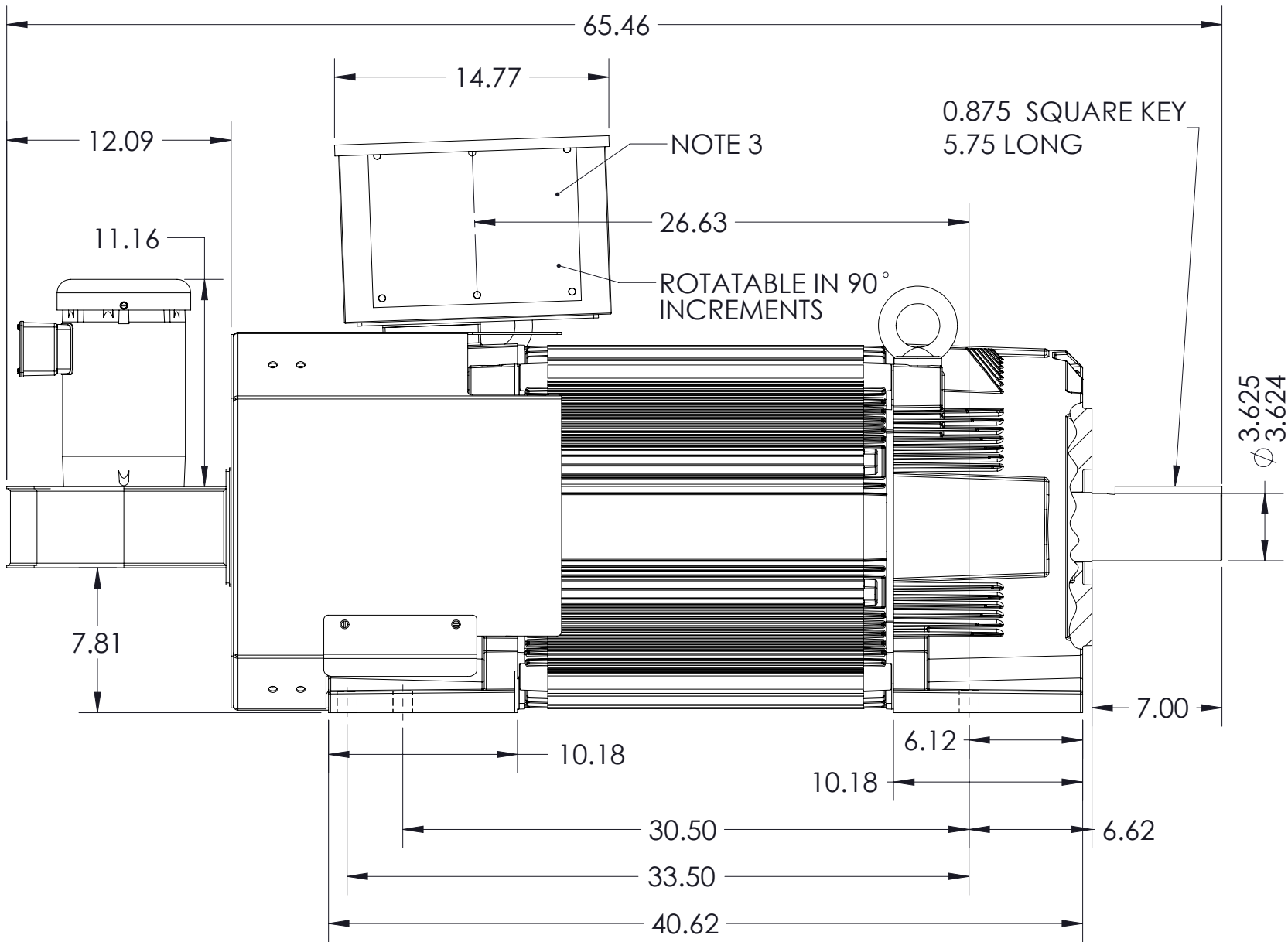
RPM-AC FINNED FRAME VARIABLE SPEED ALTERNATING CURRENT MOTOR  
FL4034Z

ENCLOSURE: TOTALLY ENCLOSED

MOUNTING: FOOT

COOLING: BLOWER COOLED

ACCESSORIES: PROVISIONS FOR  
TACHOMETER MOUNTING  
ONLY WHEN SPECIFIED



NOTE 1: O.D.E. C-FACE & TACHOMETER MOUNTING.  
1/2-13 TAP, 1.00 DEEP, ON A Ø7.25 B.C.  
FACE RUNOUT AND ECCENTRICITY 0.004 MAX. T.I.R.

NOTE 2: SHAFT HEIGHT WILL NOT BE EXCEEDED.  
SHIMS UP TO 0.06 INCHES IN THICKNESS ARE USUALLY  
REQUIRED FOR COUPLED OR GEARED MACHINES.

NOTE 3: REMOVABLE COVER PLATE FOR CUSTOMER DRILLING.

TERMINAL BOX MAY BE LOCATED F1, F2 OR F3, IF SPECIFIED.  
REFER TO 616779-55 FOR SPECIFIED TACHOMETER DIMENSIONS.

CUSTOMER IS RESPONSIBLE FOR DETERMINING THAT BALDOR'S PRODUCT WILL PERFORM SUITABLY IN THE INTENDED APPLICATION

REV. DESC: INITIAL RELEASE			
REV: -	VERSION: 00	REVISED: 09:25:26 12/10/2013	TDR: 000000802774
MODEL NO. 619653-001			REF:
BY: MGHWCG			B

**BALDOR**

DIM SHEET,FL4034Z,RPM-AC,TEBC

619653-001

619653-001