

RPM-AC FINNED FRAME VARIABLE SPEED ALTERNATING CURRENT MOTOR
FL2898Z

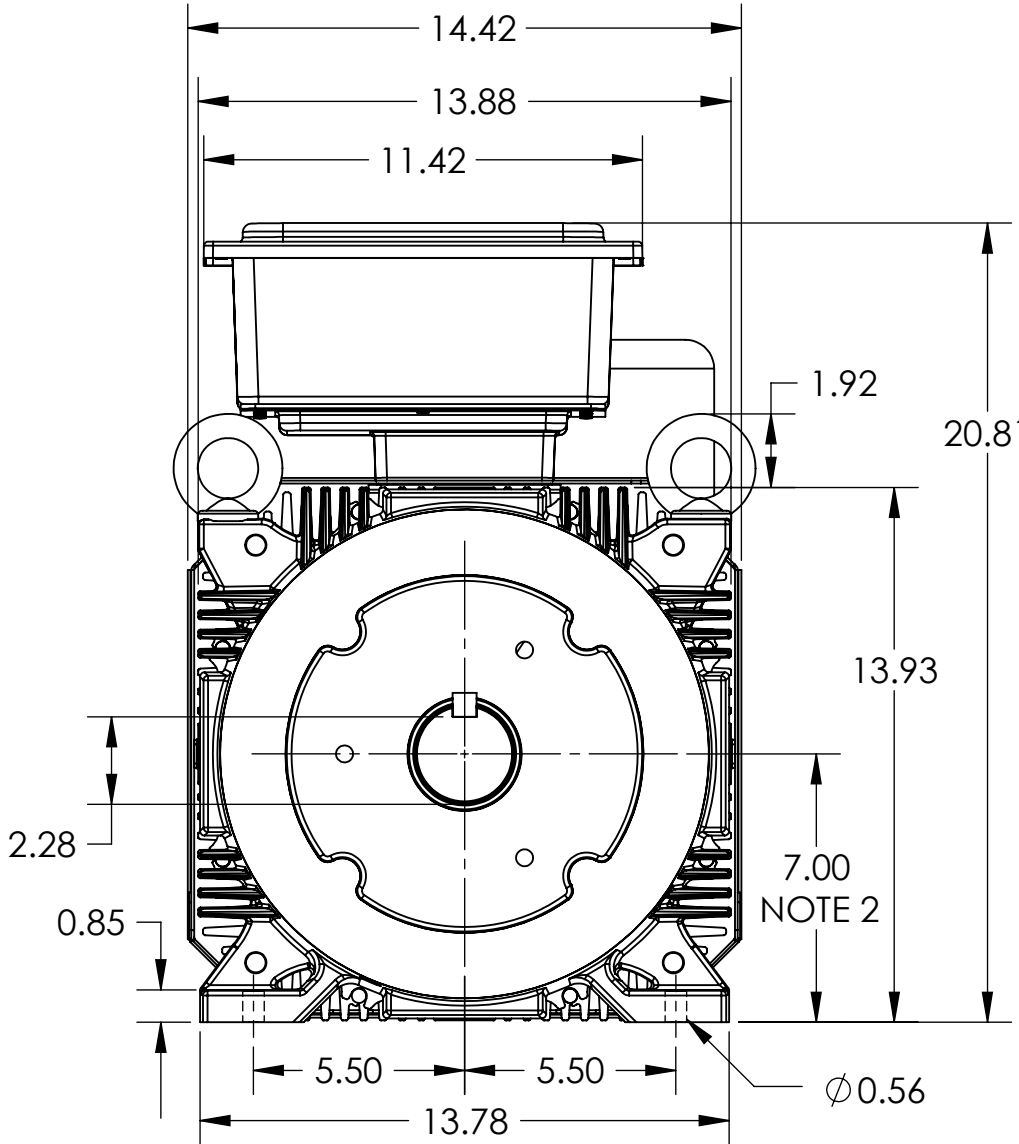
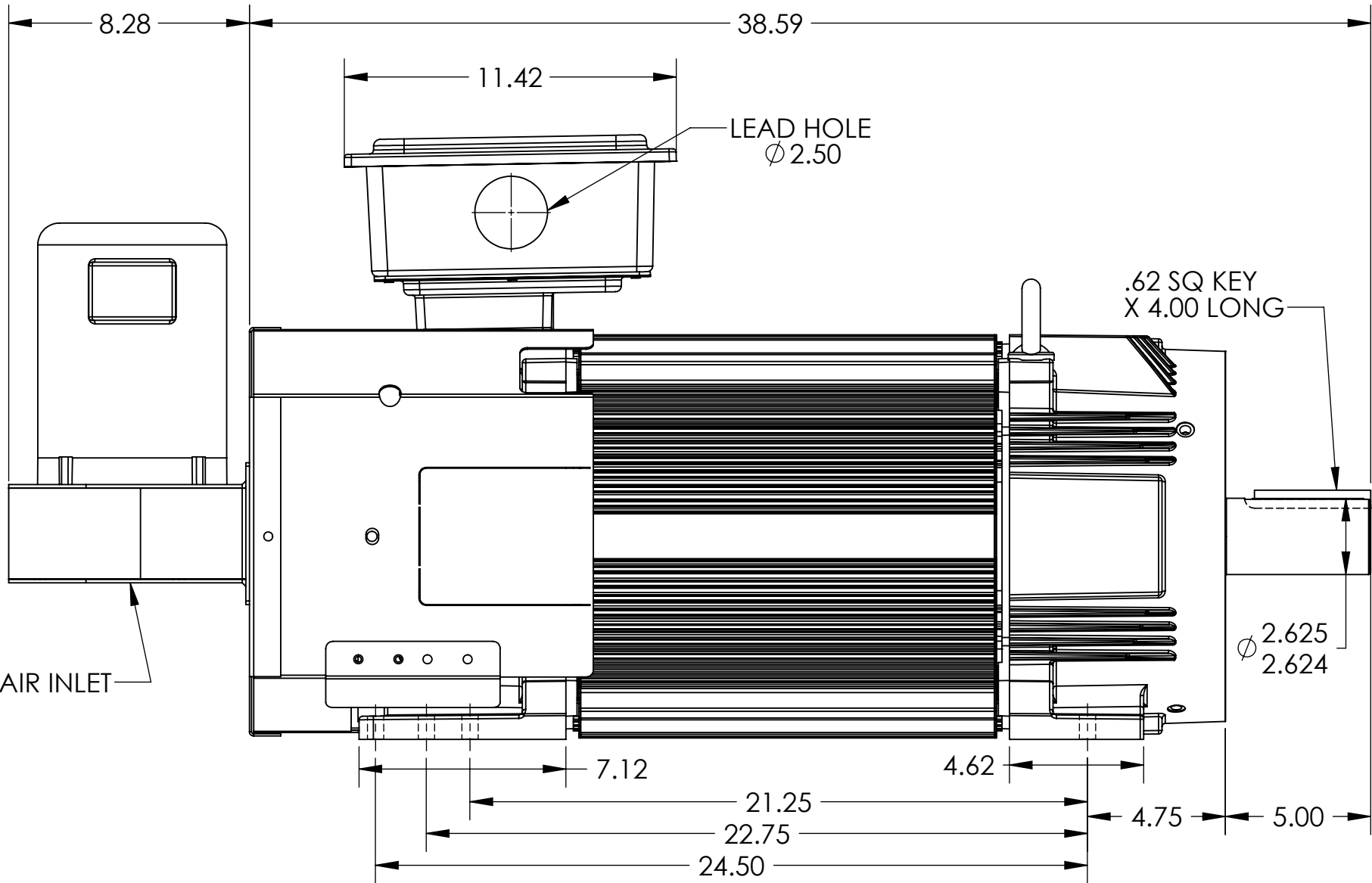
ENCLOSURE: TOTALLY ENCLOSED

MOUNTING: FOOT

DRIVE METHOD: COUPLED OR BELTED

COOLING: BLOWER COOLED

ACCESSORIES: PROVISIONS FOR
TACHOMETER MOUNTING
ONLY WHEN SPECIFIED



235 AMP MILL TERMINAL BOX SHOWN
ROTATABLE IN 90° INCREMENTS

DIMENSIONS ARE IN INCHES

MOTOR WEIGHT: 890 LBS. (MAY VARY 15%)

CUSTOMER IS RESPONSIBLE FOR DETERMINING THAT THE PRODUCT WILL PERFORM SUITABLY IN THE INTENDED APPLICATION

NOTE 1: O.D.E. C-FACE & TACHOMETER MOUNTING
1/2-13 TAP, 1.00 DEEP, ON A ϕ 7.25 B.C.
FACE RUNOUT AND ECCENTRICITY 0.004 MAX. T.I.R.

NOTE 2: SHAFT HEIGHT WILL NOT BE EXCEEDED
SHIMS UP TO 0.03 INCHES IN THICKNESS ARE USUALLY
REQUIRED FOR COUPLED OR GEARED MACHINES

REV. DESC: INITIAL RELEASE			
REV: -	VERSION: 00	REVISED: 09:34:25 10/29/2021	TDR: 000001179406
MODEL NO. 617532-053			REF: -
BY: USWATUR			B

BALDOR - RELIANCE®

DIM SHT,FL2898Z,RPMAC,TEBC,PROV FOR TACH,RMM BLOWER

617532-053

617532-053