

RPMAC FINNED FRAME VARIABLE SPEED ALTERNATING CURRENT MOTOR  
FL2578Z

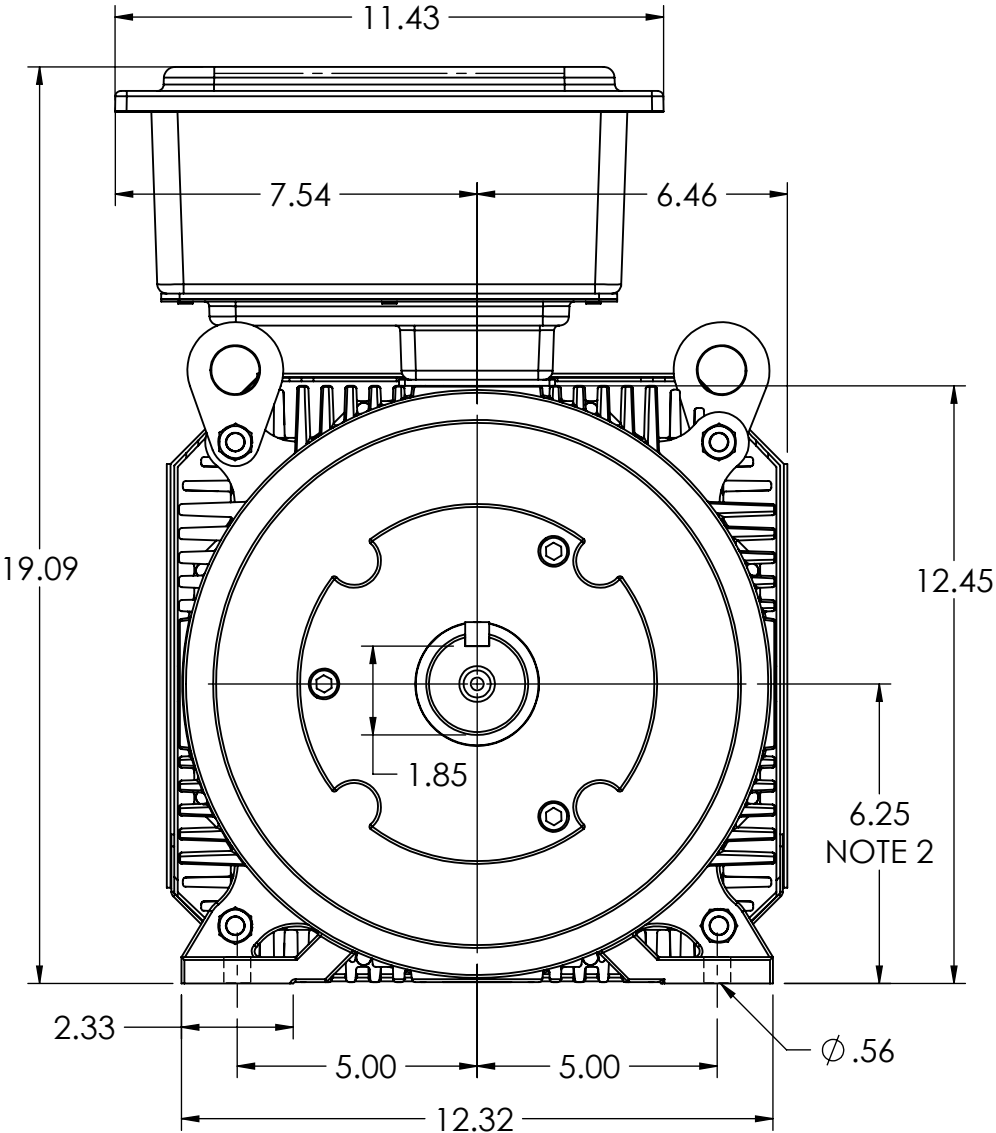
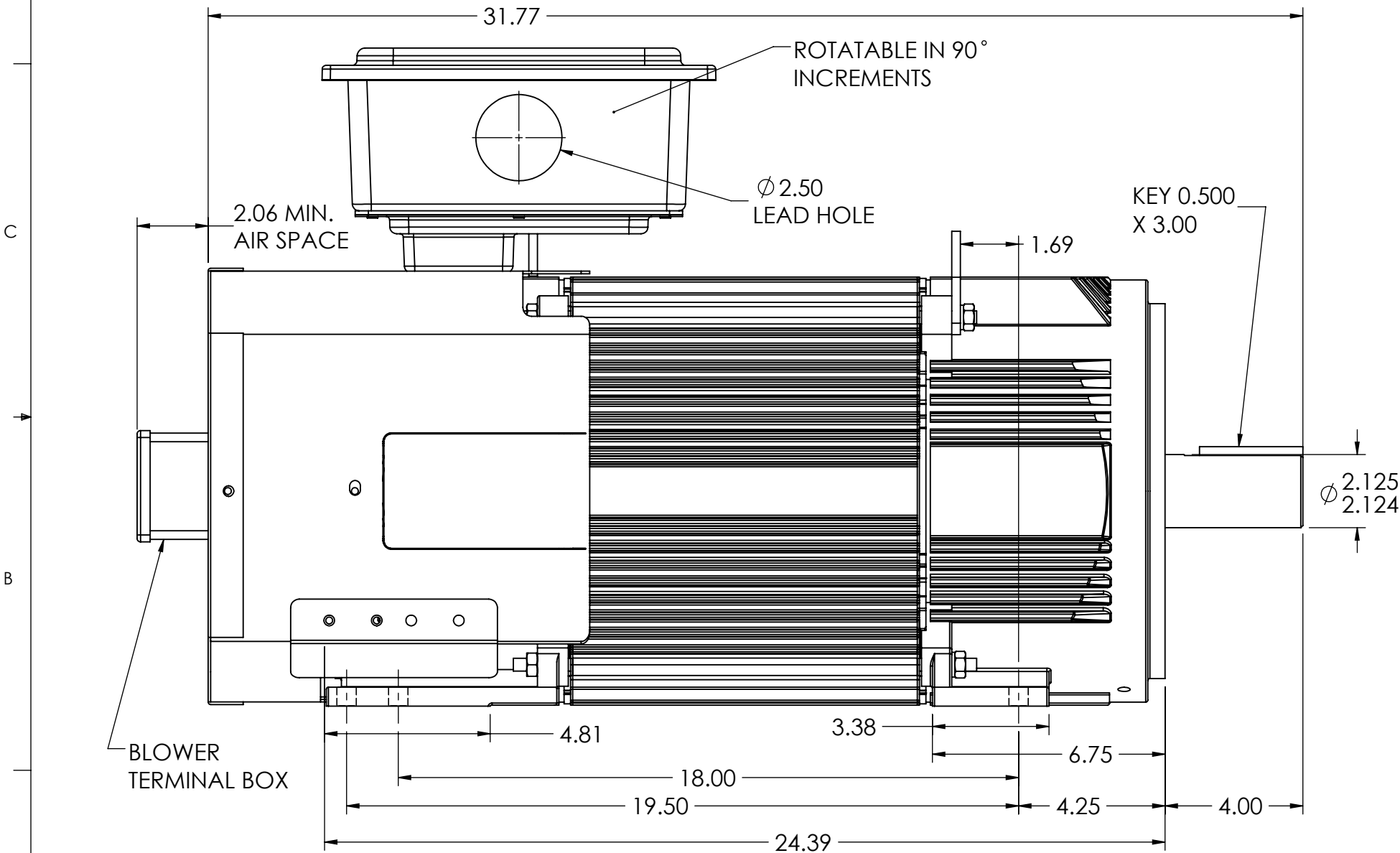
ENCLOSURE: TOTALLY ENCLOSED

MOUNTING: FOOT

DRIVE METHOD: COUPLED OR BELTED

COOLING: BLOWER-COOLED OR  
FAN-COOLED

ACCESSORIES: PROVISIONS FOR  
TACHOMETER MOUNTING  
ONLY WHEN SPECIFIED



NOTE 1 TACHOMETER MOUNTING  
1/2-13 TAP 1.00 DEEP, ON A 7.25 DIA. BOLT CIRCLE  
FACE RUNOUT AND ECCENTRICITY .004 MAX T.I.R.

NOTE 2 SHAFT HEIGHT WILL NOT BE EXCEEDED.  
SHIMS UP TO .03 INCHES IN THICKNESS ARE USUALLY  
REQUIRED FOR COUPLED OR GEARED MACHINES.

NOTE 3 MAXIMUM PERMISSIBLE SHAFT RUNOUT WHEN MEASURED  
AT END OF STD. SHAFT EXTENSION IS .002 T.I.R. UP TO AND  
INCLUDING 1.625 DIA. AND .003 T.I.R. 1.625 TO 5 INCH DIA.

235 AMP MILL TERMINAL BOX SHOWN  
MOTOR WEIGHT 540 LBS. (MAY VARY 15%)  
DIMENSIONS ARE IN INCHES SCALE 1.00

CUSTOMER IS RESPONSIBLE FOR DETERMINING THAT BALDOR'S PRODUCT WILL PERFORM SUITABLY IN THE INTENDED APPLICATION.

REV. DESC: REDRAW IN SOLIDWORKS			
REV: A	VERSION: 01	REVISED: 03:29:51 01/25/2023	TDR: 000001202997
MODEL NO. 617577-053			
BY: USANBRO28		B	

BALDOR - RELIANCE®

DIM SHT FL2578Z RPM AC TEBC F3 MILL BOX

617577-053

617577-053