

RPMAC VARIABLE SPEED ALTERNATING CURRENT MOTOR
FL2570Z

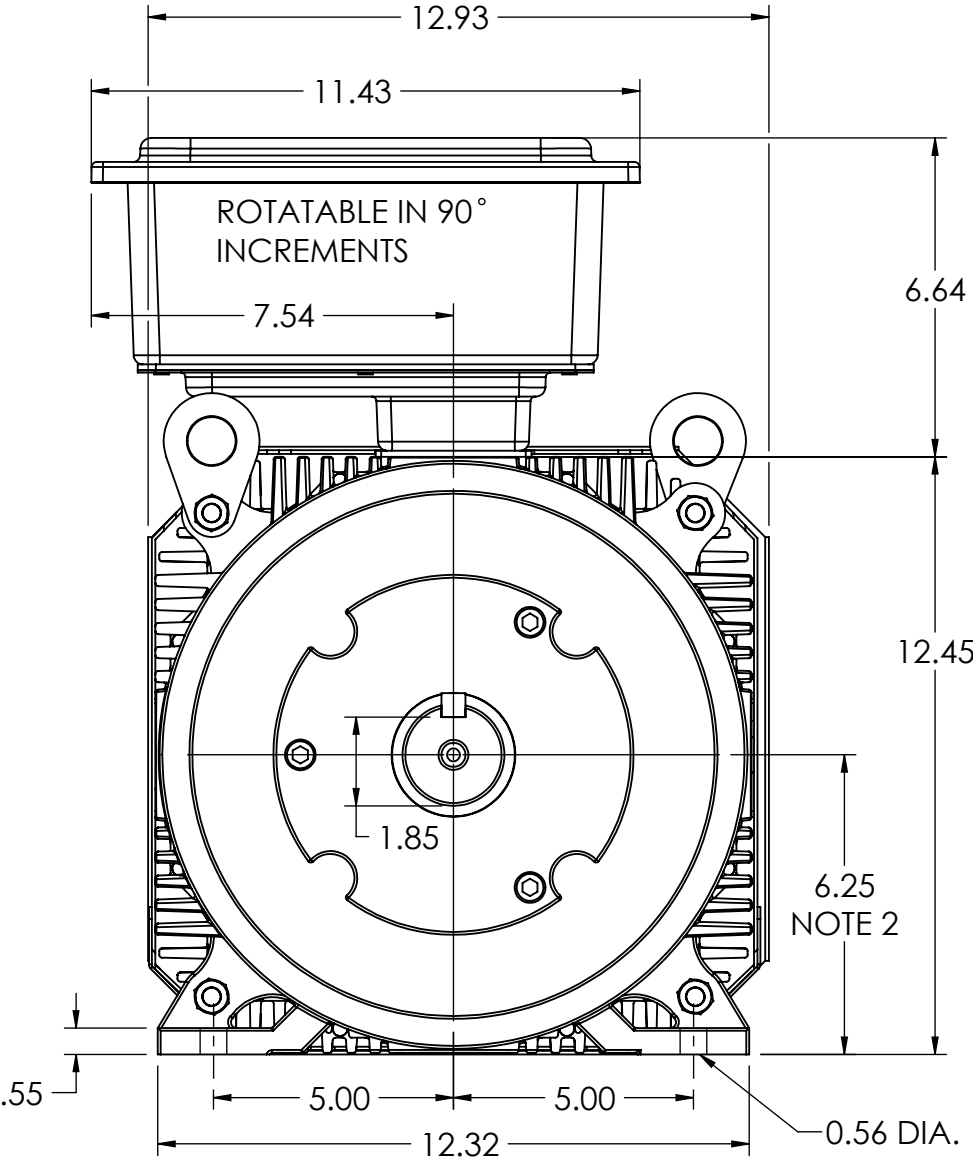
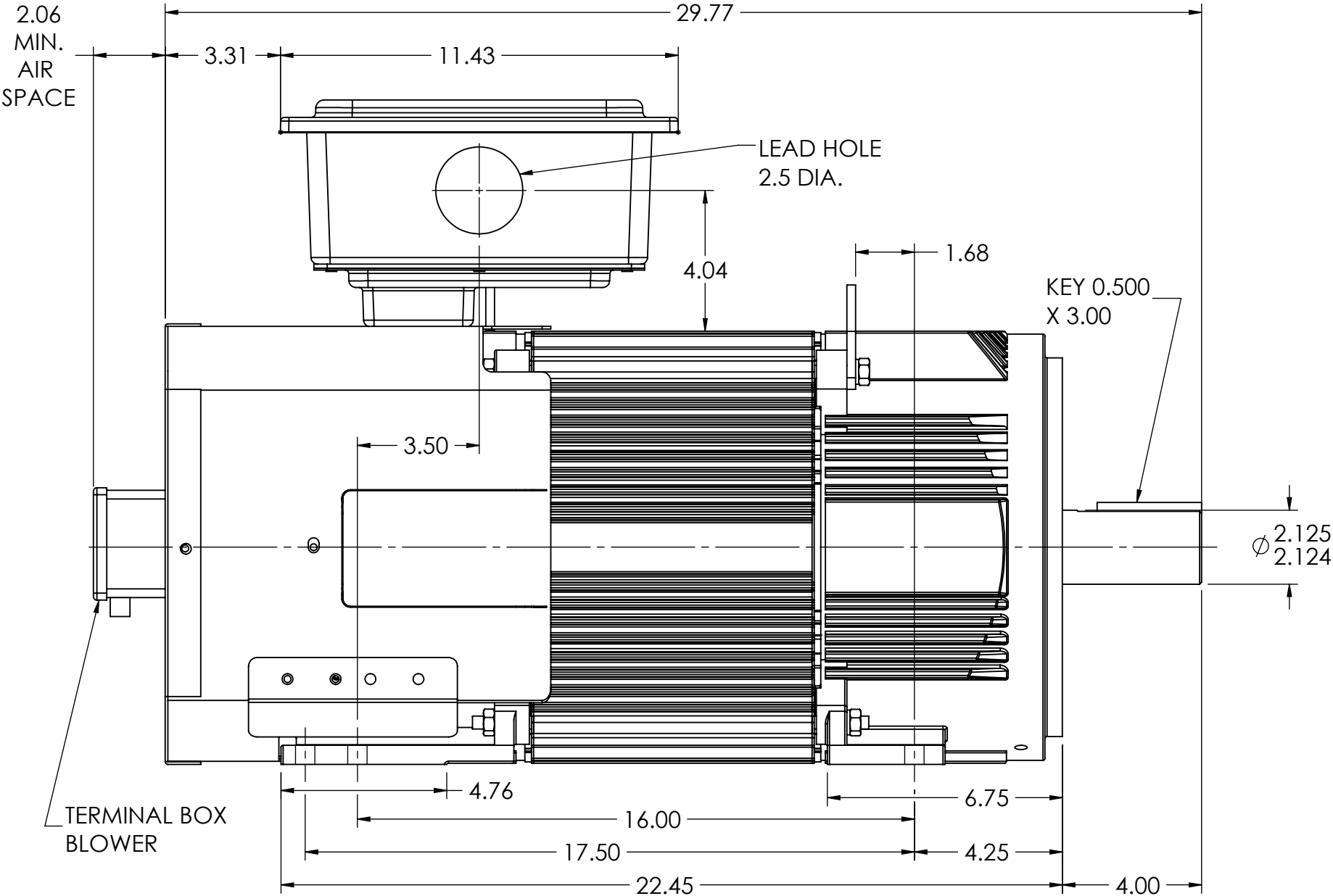
ENCLOSURE: TOTALLY ENCLOSED

MOUNTING: FOOT

DRIVE METHOD: COUPLED OR BELTED

COOLING: BLOWER COOLED

ACCESSORIES: PROVISIONS FOR
TACHOMETER MOUNTING
ONLY WHEN SPECIFIED



NOTE 1 TACHOMETER MOUNTING
1/2-13 TAP 1.00 DEEP, ON A 7.25 DIA. BOLT CIRCLE
FACE RUNOUT AND ECCENTRICITY .004 MAX T.I.R.

NOTE 2 SHAFT HEIGHT WILL NOT BE EXCEEDED.
SHIMS UP TO .03 INCHES IN THICKNESS ARE USUALLY
REQUIRED FOR COUPLED OR GEARED MACHINES.

NOTE 3 MAXIMUM PERMISSIBLE SHAFT RUNOUT WHEN MEASURED
AT END OF STD. SHAFT EXTENSION IS .002 T.I.R. UP TO AND
INCLUDING 1.625 DIA. AND .003 T.I.R. 1.625 TO 5 INCH DIA.

CUSTOMER IS RESPONSIBLE FOR DETERMINING THAT BALDOR'S PRODUCT WILL PERFORM SUITABLY IN THE INTENDED APPLICATION.

REV. DESC: REMOVE FAN COOLED DESCRIPTION, CORRECT NOTE 1 TAP			
REV: A	VERSION: 01	REVISED: 03:48:46 10/26/2021	TDR: 000001180307
MODEL NO. 617573-053			
BY: USANBRO28		B	

235 AMP MILL TERMINAL BOX SHOWN
MOTOR WEIGHT 475 LBS. (MAY VARY 15%)
DIMENSIONS ARE IN INCHES SCALE 1:1

BALDOR - RELIANCE®

DIM SHT FL2570Z RPM AC TEAO/BC F3 MILL BOX

617573-053

617573-053