

**BALDOR® • RELIANCE®**

---

# Customer information packet

## HDS65-0104AGKNN

HDS65-0104A W/ABSOLUTE SINGL-TURN (DSL),

**Specifications**

<b>Bearing Grease Type</b>	Polyrex EM
<b>Dimensional Drawing Numbers</b>	HD65LYA003
<b>Nameplate Amps</b>	3.2

**Part detail**

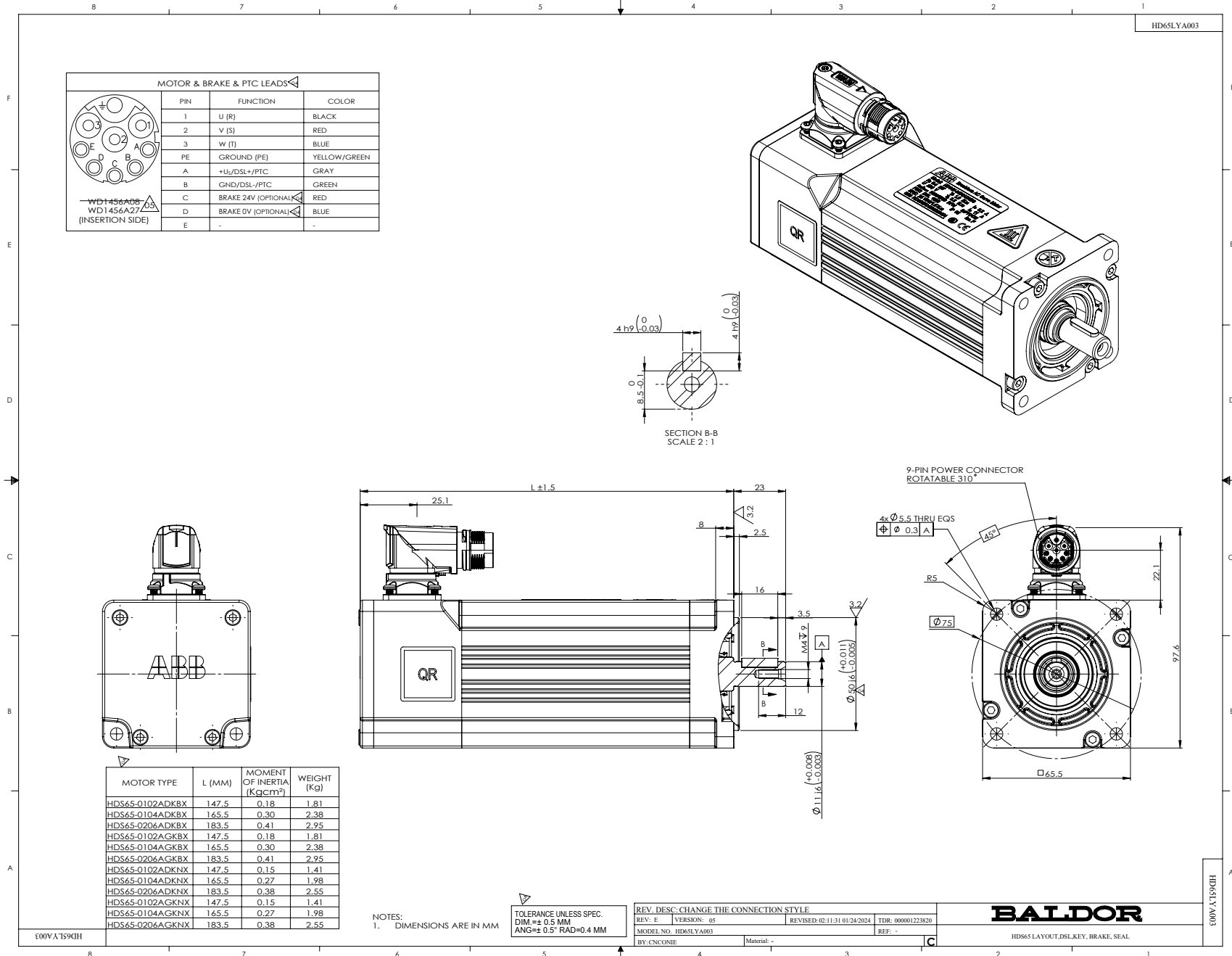
<b>Revision</b>	E
<b>Type</b>	
<b>Mech. spec.</b>	
<b>Base</b>	
<b>Status</b>	PRD/A
<b>Elec. spec.</b>	
<b>Layout</b>	HD65LYA003
<b>Eff. date</b>	04-16-2018
<b>CD Diagram</b>	
<b>Poles</b>	
<b>Leads</b>	
<b>Proprietary</b>	False
<b>Created date</b>	08-15-2017

**Nameplate**

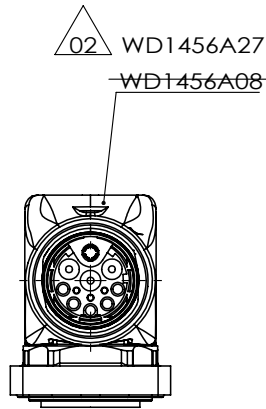
---

<b>LB1577T01</b>									
<b>MODEL:</b>	HDS65-0104AGKNN								
<b>PN</b>	0.4	<b>KW</b>	<b>TO</b>	1.2	<b>N.M</b>	<b>IO</b>	3.2	<b>A</b>	
<b>U</b>	230	<b>V</b>	<b>TP</b>	3.6	<b>N.M</b>	<b>IP</b>	11.0	<b>A</b>	
<b>NN/N MAX</b>	3000/5000		<b>RPM</b>	3XPTC130					
<b>FBK</b>	S.DSL		<b>IP</b>	IP54	<b>INS F</b>				
<b>BRK:</b>	VDC/		<b>N.M</b>						
<b>S/N</b>									

---



CD2167A06



MOTOR & PTC LEADS		
PIN	FUNCTION	COLOR
1	U (R)	BLACK
2	V (S)	RED
3	W (T)	BLUE
PE	GROUND (PE)	YELLOW/GREEN
A	+U <sub>s</sub> /DSL+/PTC	GRAY
B	GND/DSL-/PTC	GREEN
C	BRAKE 24V	RED
D	BRAKE 0V	BLUE
E	-	-

02 WD1456A27  
~~WD1456A08~~  
 (INSERTION SIDE)

REV. DESC: CHANGE DESCRIPTION

REV: B    VERSION: 02    REVISED: 03:55:13 12/23/2024    TDR: 000001247054

90A712C

MODEL NO. CD2167A05

REF: -

BY: CNCONIE    Material: -

**BALDOR**

CONNECTION DIAGRAM,POWER & DSL,HDS65

CD2167A06