

BALDOR • RELIANCE

Customer information packet

HDS65-0102AEKNN

HDS65-0102AEKNN, INCR.ENCODER, KEY

Specifications

Bearing Grease Type	Polyrex EM
Dimensional Drawing Numbers	HD65LYA004
Frame Material	Laminated
Nameplate Amps	1.7

Part detail

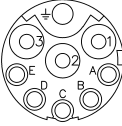
Revision	E
Type	
Mech. spec.	
Base	
Status	PRD/A
Elec. spec.	
Layout	HD65LYA004
Eff. date	04-09-2018
CD Diagram	
Poles	
Leads	
Proprietary	False
Created date	08-16-2017

Nameplate

LB1577T01									
MODEL:	HDS65-0102AEKNN								
PN	0.2	KW	TO	0.6	N.M	IO	1.7	A	
U	230	V	TP	1.8	N.M	IP	6.0	A	
NN/N MAX	3000/5000		RPM	3XPTC130					
FBK	ENC		IP	IP54		INS F			
BRK:	VDC/		N.M						
S/N									

HD65LYA004

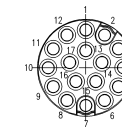
MOTOR & BRAKE & PTC LEADS



PIN	FUNCTION	COLOR
1	U (R)	BLACK
2	V (S)	RED
3	W (T)	BLUE
PE	GROUND (PE)	YELLOW/GREEN
A	PTC	BLACK
B	PTC	BLUE
C	BRAKE 24V (OPTIONAL)	RED
D	BRAKE 0V (OPTIONAL)	BLUE
E	-	-

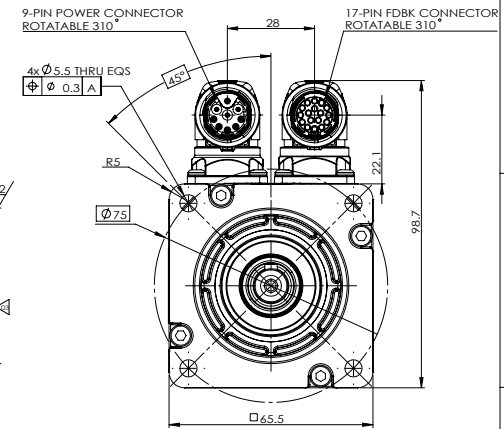
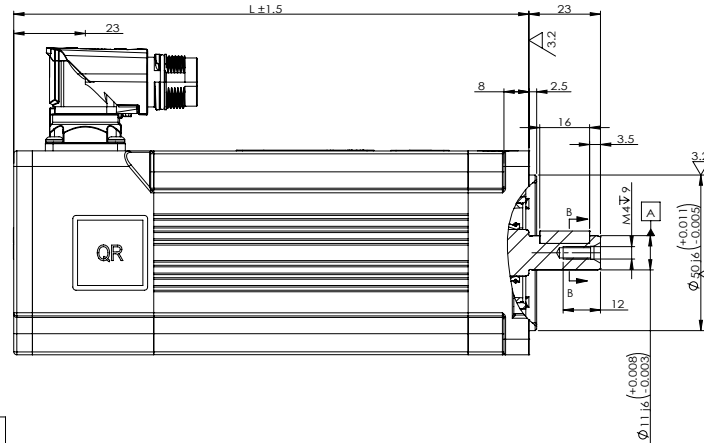
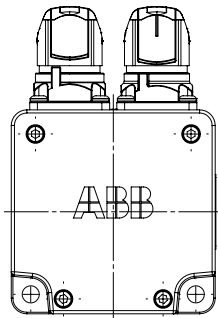
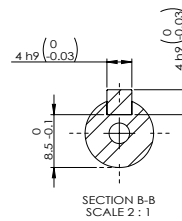
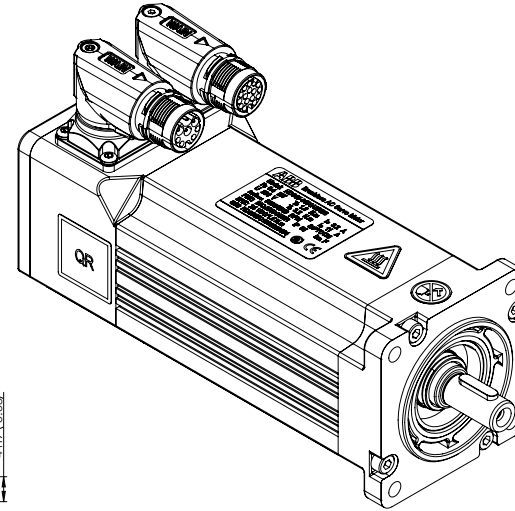
WD1456A08
WD1456A27
(INSERTION SIDE)

INCREMENTAL ENCODER LEADS



PIN	FUNCTION	COLOR	PIN	FUNCTION	COLOR
1	DC+5V	RED	10	U	BROWN/BLACK
2	GND	BLACK	11	V	GRAY
3	A	BLUE	12	W	WHITE
4	A-bar	BLUE/BLACK	13	V-bar	GRAY/BLACK
5	B	GREEN	14	W	WHITE
6	B-bar	GREEN/BLACK	15	W	WHITE/BLACK
7	Z	YELLOW	16	NC	-
8	Z-bar	YELLOW/BLACK	17	NC	-
9	NC	-			

WD1456A17
WD1456A28
(INSERTION SIDE)



MOTOR TYPE	L (MM)	MOMENT OF INERTIA (Kgcm ²)	WEIGHT (Kg)
HDS65-0102AEKBX	147.5	0.19	1.81
HDS65-0104AEKBX	165.5	0.30	2.38
HDS65-0206AEKBX	183.5	0.42	2.95
HDS65-0102AEKNN	147.5	0.15	1.41
HDS65-0104AEKNN	165.5	0.27	1.98
HDS65-0206AEKNN	183.5	0.39	2.55

NOTES:
1. DIMENSIONS ARE IN MM

TOLERANCE UNLESS SPEC.
DIM ± 0.5 MM
ANG ± 0.5° RAD=0.4 MM

REV. DESC: CHANGE THE CONNECTION STYLE
REV: D | VERSION: 04 | REVISED: 02-31-35 01/24/2024 | TDR: 00001223820
MODEL NO. HD65LYA004 | REF: -
BY: CNCONE | Material: -

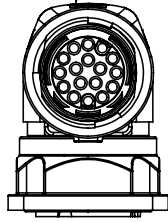
BALDOR

HDS65 LAYOUT, INC. ENCODER, KEY, BRAKE, SEAL

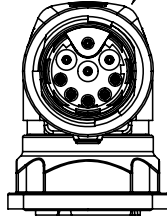
HD65LYA004

CD2167A07

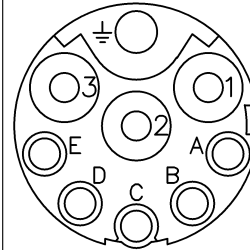
WD1456A07
WD1456A28



WD1456A08
WD1456A27

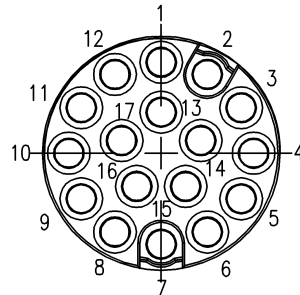


MOTOR & PTC LEADS		
PIN	FUNCTION	COLOR
1	U (R)	BLACK
2	V (S)	RED
3	W (T)	BLUE
PE	GROUND (PE)	YELLOW/GREEN
A	PTC	BLACK
B	PTC	BLUE
C	BRAKE 24V	RED
D	BRAKE 0V	BLUE
E	-	-



WD1456A27
(INSERTION SIDE)

INCREMENTAL ENCODER LEADS					
PIN	FUNCTION	COLOR	PIN	FUNCTION	COLOR
1	DC+5V	RED	10	U	BROWN
2	GND	BLACK	11	\bar{U}	BROWN/BLACK
3	A	BLUE	12	V	GRAY
4	\bar{A}	BLUE/BLACK	13	\bar{V}	GRAY/BLACK
5	B	GREEN	14	W	WHITE
6	\bar{B}	GREEN/BLACK	15	\bar{W}	WHITE/BLACK
7	Z	YELLOW	16	NC	-
8	\bar{Z}	YELLOW/BLACK	17	NC	-
9	NC	-			



WD1456A28
(INSERTION SIDE)

REV. DESC: CHANGE THE DRAWING

REV: C VERSION: 03 REVISED: 01:27:31 01/24/2024 TDR: 000001223820

CD2167A07

MODEL NO. WD1456A28

REF: -

BY: CNCONIE Material: -

BALDOR

CONNECTION DIAGRAM, POWER & INCREMENTAL ENCODER, HDS65

CD2167A07