

BALDOR • RELIANCE

Customer information packet

HDS100-0413AGKNN

HDS100-0413A W/ABSOLUTE SINGL-TURN (DSL)

Specifications

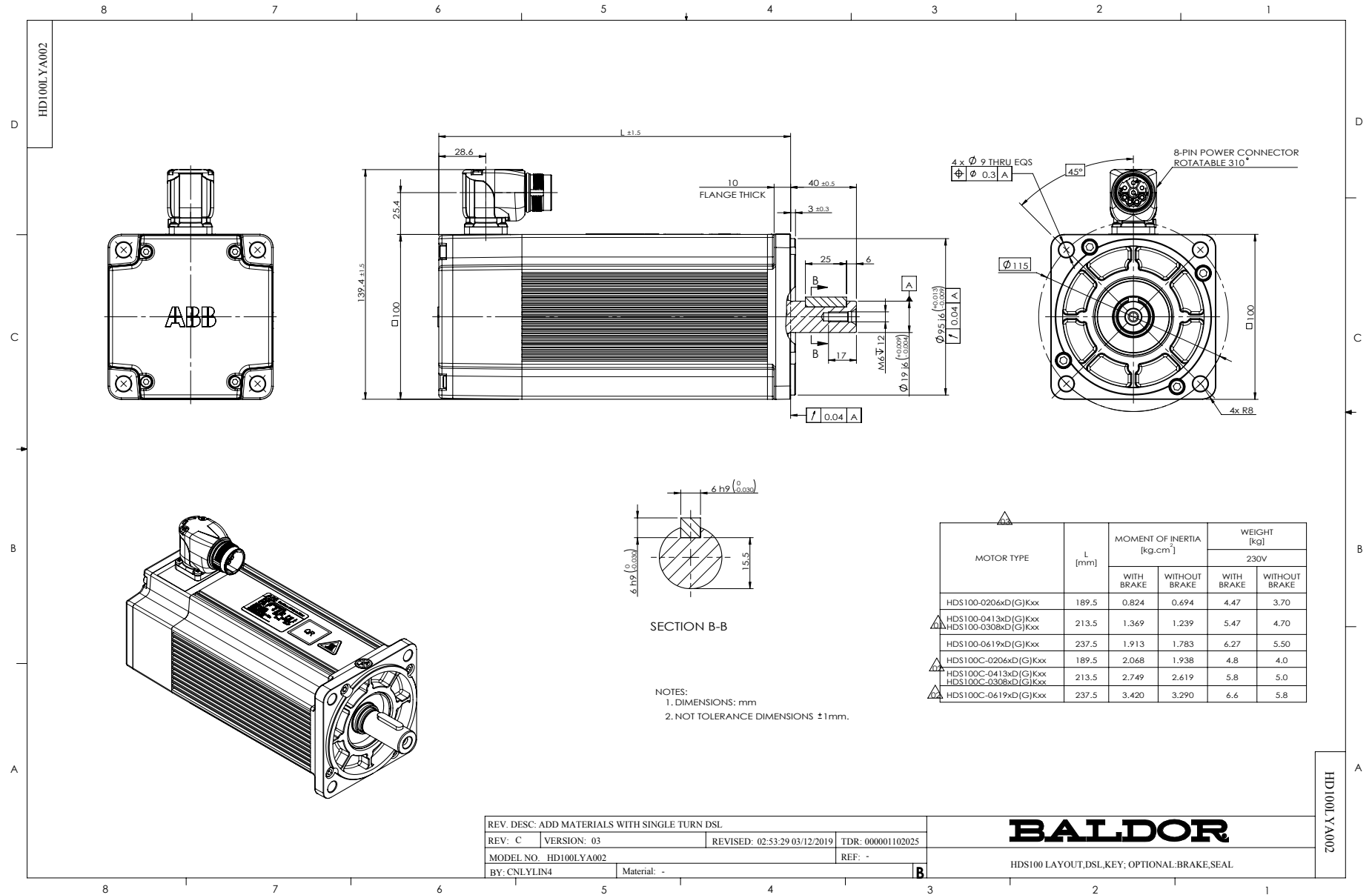
Bearing Grease Type	Polyrex EM
Dimensional Drawing Numbers	HD100LYA002
Nameplate Amps	6.4

Part detail

Revision	D
Type	
Mech. spec.	
Base	
Status	PRD/A
Elec. spec.	
Layout	HD100LYA002
Eff. date	04-16-2018
CD Diagram	
Poles	
Leads	
Proprietary	False
Created date	08-15-2017

Nameplate

LB1577T01									
MODEL:	HDS100-0413AGKNN								
PN	1.3	KW	TO	4.0	N.M	IO	6.4	A	
U	230	V	TP	12.0	N.M	IP	22.0	A	
NN/N MAX	3000/4000		RPM	3XPTC130					
FBK	S.DSL		IP	IP54	INS F				
BRK:	VDC/		N.M						
S/N									

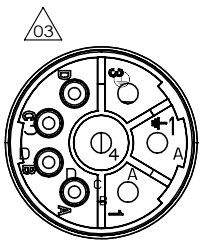


REV. DESC: ADD MATERIALS WITH SINGLE TURN DSL			
REV: C	VERSION: 03	REVISED: 02:53:29 03/12/2019	TDR: 000001102025
MODEL NO. HD100LYA002		REF: -	
BY: CNLYLIN4	Material: -		

BALDOR

HDS100 LAYOUT,DSL,KEY, OPTIONAL, BRAKE, SEAL

CD2167A02

MOTOR & BRAKE & DSL ENCODER & PTC LEADS			
	PIN	FUNCTION	COLOR
 <p>WD1456A26 (PLUG SIDE)</p>	1	V (S) U (R)	RED BLACK △02
	2	GROUND (PE)	YELLOW/GREEN
	3	U (R) W (T)	BLACK BLUE △02
	4	W (T) V (S)	BLUE RED
	A	+U _s /DSL+/PTC	GRAY
	B	BRAKE GND/DSL-/PTC	RED GREEN △02
	C	BRAKE	BLUE RED
	D	GND/DSL-/PTC BRAKE	GREEN BLUE △02

REV. DESC: ENGINEERING CHANGE

REV: C VERSION: 03 REVISED: 03:56:22 03/04/2024 TDR: 000001227267

CD2167A02

MODEL NO. CD2167A02

REF: -

BY: CNCONIE

Material: -

BALDOR

CONNECTION DIAGRAM, POWER & DSL

CD2167A02