

BALDOR • RELIANCE

Customer information packet

HDS100-0413AEKNN

HDS100-0413A W/INC ENCODER(2500PPR), KEY

Specifications

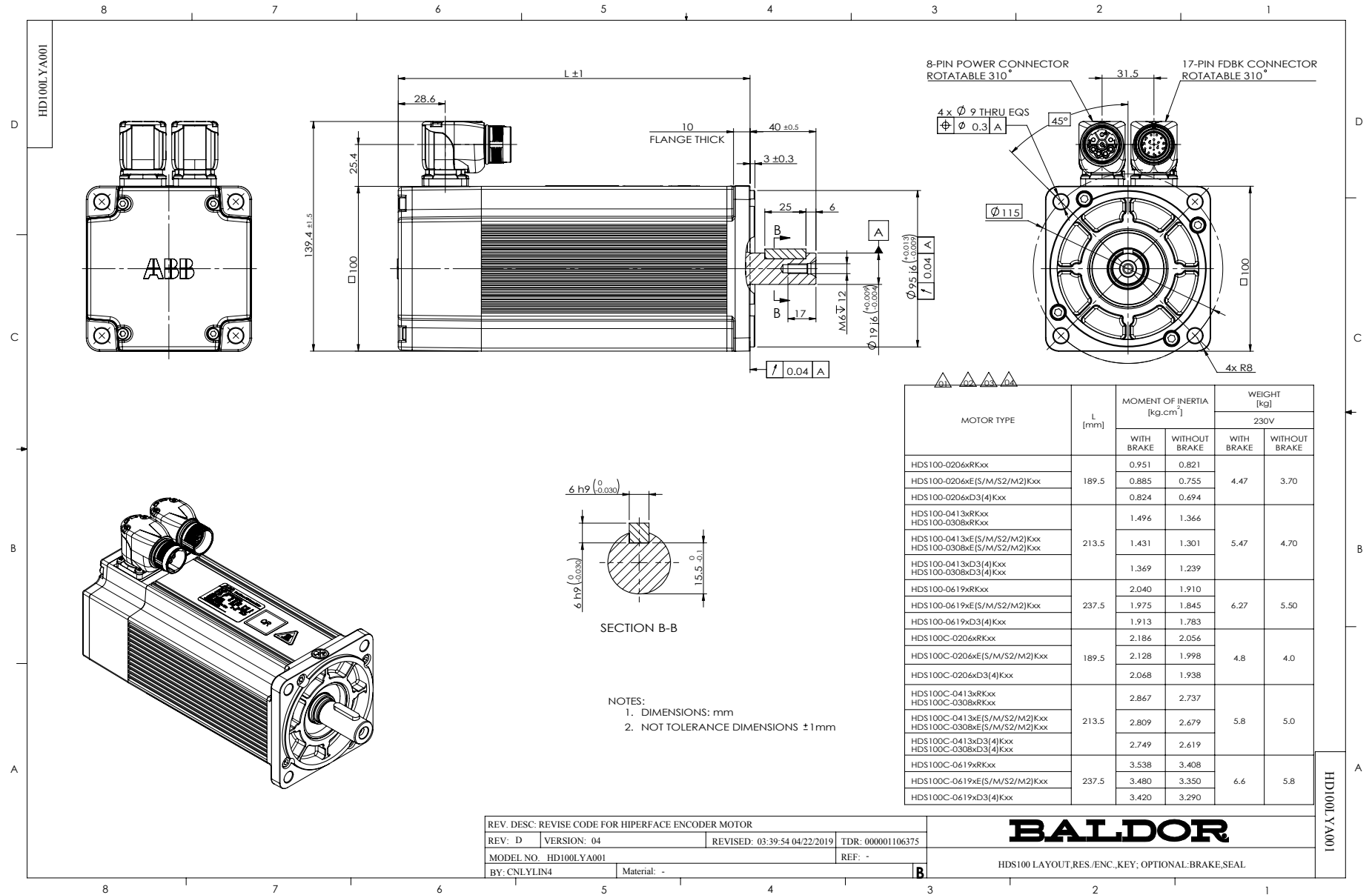
Bearing Grease Type	Polyrex EM
Dimensional Drawing Numbers	HD100LYA001
Nameplate Amps	6.4

Part detail

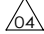
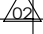
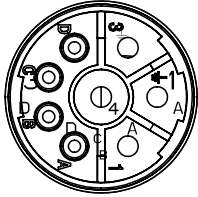
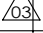
Revision	E
Type	
Mech. spec.	
Base	
Status	PRD/A
Elec. spec.	
Layout	HD100LYA001
Eff. date	04-16-2018
CD Diagram	
Poles	
Leads	
Proprietary	False
Created date	08-15-2017

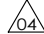
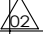
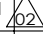
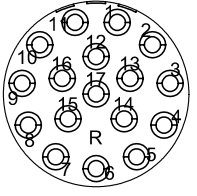
Nameplate

LB1577T01									
MODEL:	HDS100-0413AEKNN								
PN	1.3	KW	TO	4.0	N.M	IO	6.4	A	
U	230	V	TP	12.0	N.M	IP	22.0	A	
NN/N MAX	3000/4000		RPM	3XPTC130					
FBK	ENC		IP	IP54		INS F			
BRK:	VDC/		N.M						
S/N									



CD2167A03

MOTOR & BRAKE & PTC LEADS			
	PIN	FUNCTION 	COLOR
 <p>WD1456A26 (PLUG SIDE)</p>	1	U (R)	BLACK
	2	GROUND (PE)	YELLOW/GREEN
	3	W (T)	BLUE
	4	V (S)	RED
	A	PTC 	BLUE BLACK
	B	PTC	BLUE
	C	BRAKE	RED
	D	BRAKE	BLUE

INCREMENTAL ENCODER LEADS						
	PIN	FUNCTION 	COLOR	PIN	FUNCTION 	COLOR
 <p>WD1456A21 WD1456A06 (PLUG SIDE)</p>	1	DC+5V	RED	10	U	BROWN
	2	GND	BLACK	11	\bar{U}	BROWN/BLACK
	3	A	BLUE	12	V	GRAY
	4	\bar{A}	BLUE/BLACK	13	\bar{V}	GRAY/BLACK
	5	B	GREEN	14	W	WHITE
	6	\bar{B}	GREEN/BLACK	15	\bar{W}	WHITE/BLACK
	7	Z	YELLOW	16	-	-
	8	\bar{Z}	YELLOW/BLACK	17		
	9	-	-			

REV. DESC: CHANGE DESCRIPTION

REV: E VERSION: 05 REVISED: 03:49:58 12/23/2024 TDR: 000001247054

CD2167A03

MODEL NO. CD2167A03

REF: -

BY: CNCONIE Material: -

BALDOR

CONNECTION DIAGRAM, POWER & INC. ENCODER

CD2167A03