

BALDOR • RELIANCE

Customer information packet

HDS100-0206ASKNN

HDS100-0206ASKNN, SMART-ABS ENC.(SINGLE-T

Specifications

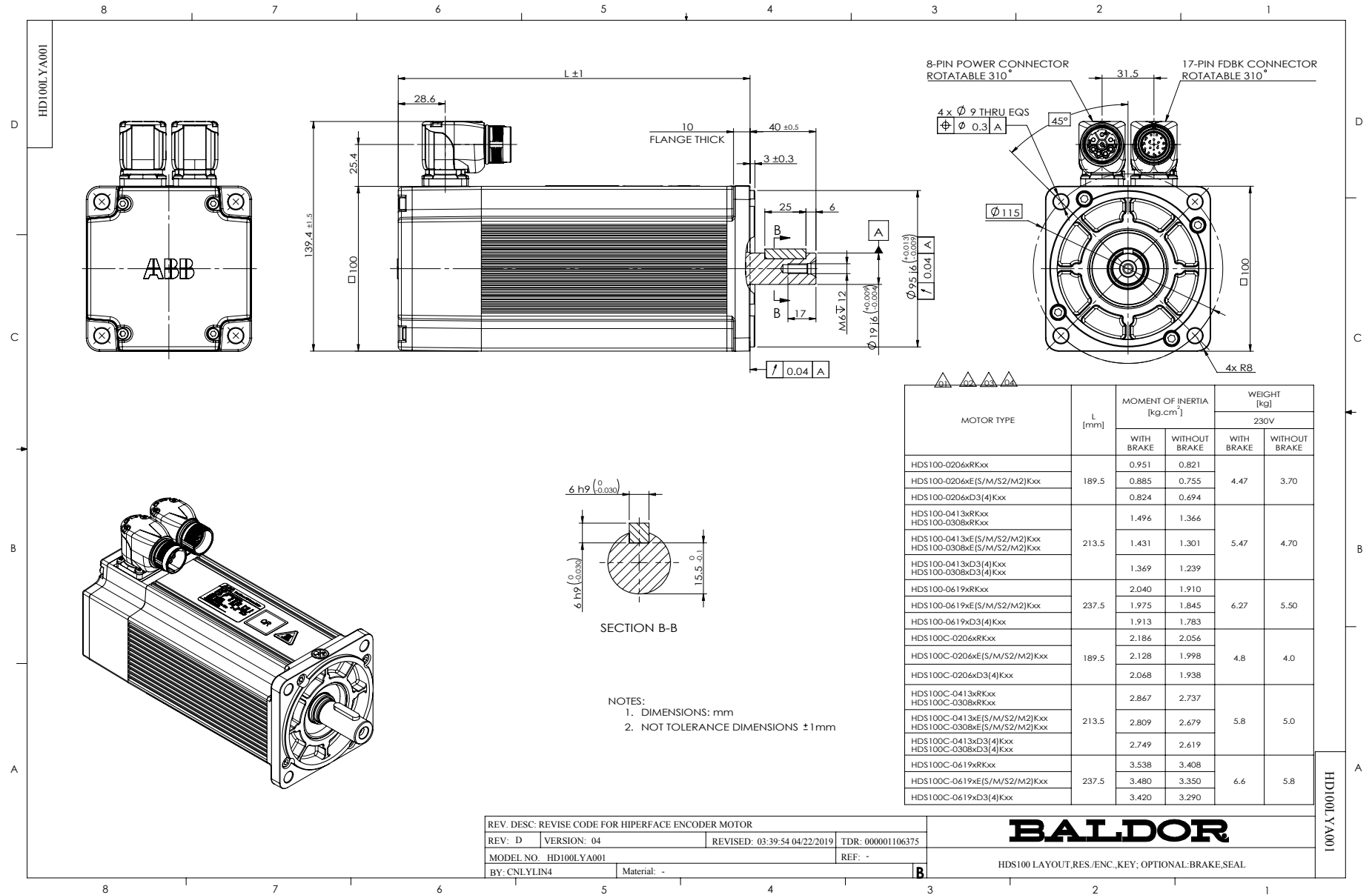
Bearing Grease Type	Polyrex EM
Dimensional Drawing Numbers	HD100LYA001
Nameplate Amps	3.2

Part detail

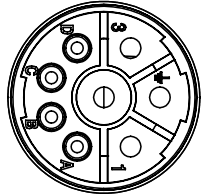
Revision	E
Type	
Mech. spec.	
Base	
Status	PRD/A
Elec. spec.	
Layout	HD100LYA001
Eff. date	04-09-2018
CD Diagram	
Poles	
Leads	
Proprietary	False
Created date	08-15-2017

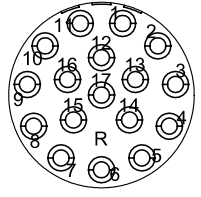
Nameplate

LB1577T01									
MODEL:	HDS100-0206ASKNN								
PN	0.6	KW	TO	2.0	N.M	IO	3.2	A	
U	230	V	TP	6.0	N.M	IP	11.0	A	
NN/N MAX	3000/4000		RPM	3XPTC130					
FBK	S.ABS		IP	IP54	INS F				
BRK:	VDC/		N.M						
S/N									



CD2167A04

MOTOR & BRAKE LEADS			
 <p>WD1456A26 (INSERTION SIDE)</p>	PIN	FUNCTION	COLOR
	1	U (R)	BLACK
	2	GROUND (PE)	YELLOW/GREEN
	3	W (T)	BLUE
	4	V (S)	RED
	A	PTC	BLUE BLACK
	B	PTC	BLUE
	C	BRAKE	RED
D	BRAKE	BLUE	

SMART-ABS ENCODER LEADS			
 <p>WD1456A21 (INSECTION SIDE)</p>	PIN	FUNCTION	COLOR
	1	VCC	RED
	2	GND	BLACK
	3	VB	BROWN
	4	GND	BROWN/BLACK
	5	SD	BLUE
	6	\overline{SD}	BLUE/BLACK
	7	CASE GND	GRAY
8-17			

REV. DESC: ENGINEERING CHANGE			
REV: E	VERSION: 05	REVISED: 04:28:49 03/04/2024	TDR: 000001227267
CD2167A04	MODEL NO. CD2167A04		REF: -
	BY: CNCONIE	Material: -	

BALDOR

CONNECTION DIAGRAM, POWER & SMART-ABS ENCODER

CD2167A04