

BALDOR • RELIANCE

Customer information packet

HBEM3774T

48M 4P TEFC HOR 215T

Class - None

Division - Not Applicable

Specifications

Enclosure	TEFC
Frame	215T
Frame Material	Iron
Frequency	60.00 Hz
Haz Area Class and Group	None
Haz Area Division	Not Applicable
Motor Letter Type	Three Phase
Output @ Frequency	10.000 HP @ 60 HZ
Phase	3
Synchronous Speed @ Frequency	1800 RPM @ 60 HZ
Voltage @ Frequency	460.0 V @ 60 HZ 230.0 V @ 60 HZ
Agency Approvals	CURUSEEV NEMA PREMIUM WEEE
Ambient Temperature	40 °C
Auxillary Box	No Auxillary Box
Auxillary Box Lead Termination	None
Base Indicator	Rigid
Bearing Grease Type	Polyrex EM (-20F +300F)
Blower	None
Current @ Voltage	24.600 A @ 230.0 V 27.000 A @ 208.0 V 12.300 A @ 460.0 V
Design Code	B
Drip Cover	No Drip Cover
Duty Rating	CONT
Efficiency @ 100% Load	91.7 %
Electrically Isolated Bearing	Electrically Isolated Bearings
Feedback Device	NO FEEDBACK
Front Shaft Indicator	None
Heater Indicator	No Heater

Part detail

Revision	E
Type	AC
Mech. spec.	07D743
Base	
Status	PRD/A
Elec. spec.	07WGT511
Layout	07LYD743
Eff. date	08-02-2023
CD Diagram	CD0005
Poles	04
Leads	9#14
Proprietary	False
Created date	01-05-2022

High Voltage Full Load Amps	12.3 a
Insulation Class	H
Inverter Code	Inverter Ready
KVA Code	H
Lifting Lugs	Standard Lifting Lugs
Locked Bearing Indicator	No Locked Bearing
Max Speed	2700 rpm
Motor Lead Quantity/Wire Size	9 @ 14 AWG
Motor Lead Termination	Flying Leads
Motor Standards	NEMA
Motor Type	0748M
Mounting Arrangement	F1
Number of Poles	4
Overall Length	18.45 IN
Power Factor	83
Product Family	General Purpose
Pulley End Bearing Type	Sealed Bearing
Pulley Face Code	Standard
Pulley Shaft Indicator	Standard
Rodent Screen	None
RoHS Status	ROHS COMPLIANT
Service Factor	1.15
Shaft Diameter	1.375 IN
Shaft Ground Indicator	No Shaft Grounding
Shaft Rotation	Reversible
Shaft Slinger Indicator	No Slinger
Speed	1765 rpm
Speed Code	Single Speed
Starting Method	Direct on line
Thermal Device - Bearing	None
Thermal Device - Winding	None
Vibration Sensor Indicator	No Vibration Sensor
Winding Thermal 1	None
Winding Thermal 2	None

Nameplate

NP4312A01A01L

CAT #	HBEM3774T		SER			CC	010A	WGT		LBS					
SPEC	07D743T511G1		RATING	40C AMB-CONT											
HZ	VOLTS		AMPS	RPM	HP	SF	NEMA NOM. EFF								
60	230/460		24.6/12.3			1765	10	1.15	91.7						
PH	3	CL	H	CODE	H	DES	B	ENCL	TEFC	IP	54	PF	83	%	
DE BRG	6307		ODE BRG	6206		FRAME	215T								
INV TYPE:	VPWM	SL HZ	1.17	CHP	60	TO	90	1.5:1							
WK2	1.18	LB FT2	MAX RPM	2700	CT	6	TO	60	10:1						
	9.4/4.7		VT	3	TO	60	20:1								
SFA 28.2/14.1															

YR

AC Induction Motor Performance Data

Record # 92021

Typical performance - not guaranteed values

Winding: 07WGT511-R007		Type: 0748M	Enclosure: TEFC
Nameplate Data		460 V, 60 Hz: High Voltage Connection	
Rated Output (HP)	10	Full Load Torque	29.8 LB-FT
Volts	230/460	Start Configuration	direct on line
Full Load Amps	24.6/12.3	Breakdown Torque	84.1 LB-FT
R.P.M.	1765	Pull-up Torque	39.8 LB-FT
Hz	60 Phase	Locked-rotor Torque	50.9 LB-FT
NEMA Design Code	B KVA Code	Starting Current	85.9 A
Service Factor (S.F.)	1.15	No-load Current	4.67 A
NEMA Nom. Eff.	91.7 Power Factor	Line-line Res. @ 25°C	1.09 Ω
Rating - Duty	40C AMB-CONT	Temp. Rise @ Rated Load	70°C
S.F. Amps	28.2/14.1	Temp. Rise @ S.F. Load	87°C
		Locked-rotor Power Factor	35.2
		Rotor inertia	1.18 lb-ft ²

Load Characteristics 460 V, 60 Hz, 10 HP

% of Rated Load	25	50	75	100	125	150	S.F.
Power Factor	48	70	79	83	85	85	84
Efficiency	89.7	92.7	92.6	91.6	90.6	88.8	91
Speed	1791	1783	1774	1763	1752	1739	1756
Line amperes	5.44	7.24	9.6	12.3	15.3	18.6	14.1

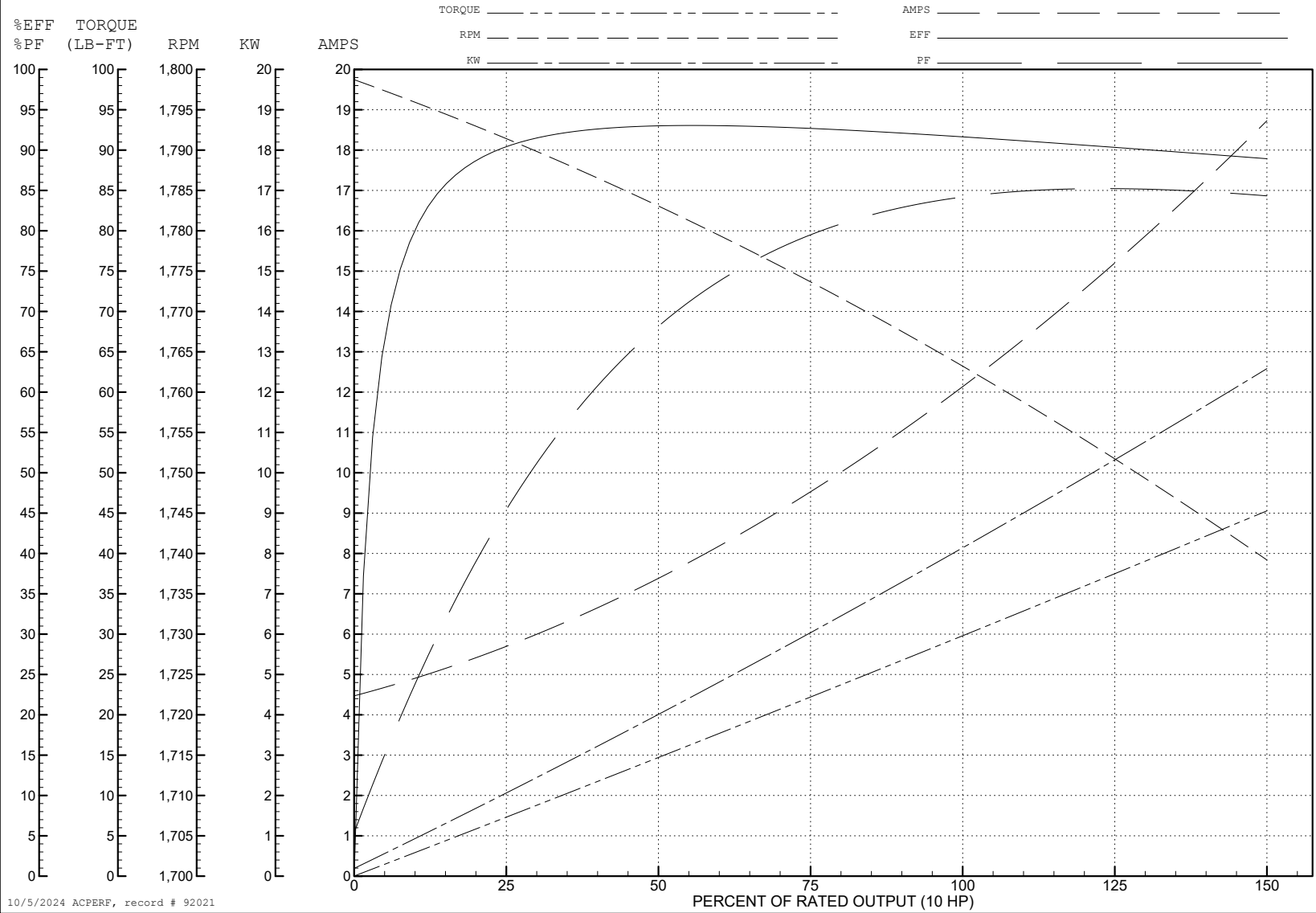
ABB Motors and Mechanical Inc.

WINDING # 07WGT511

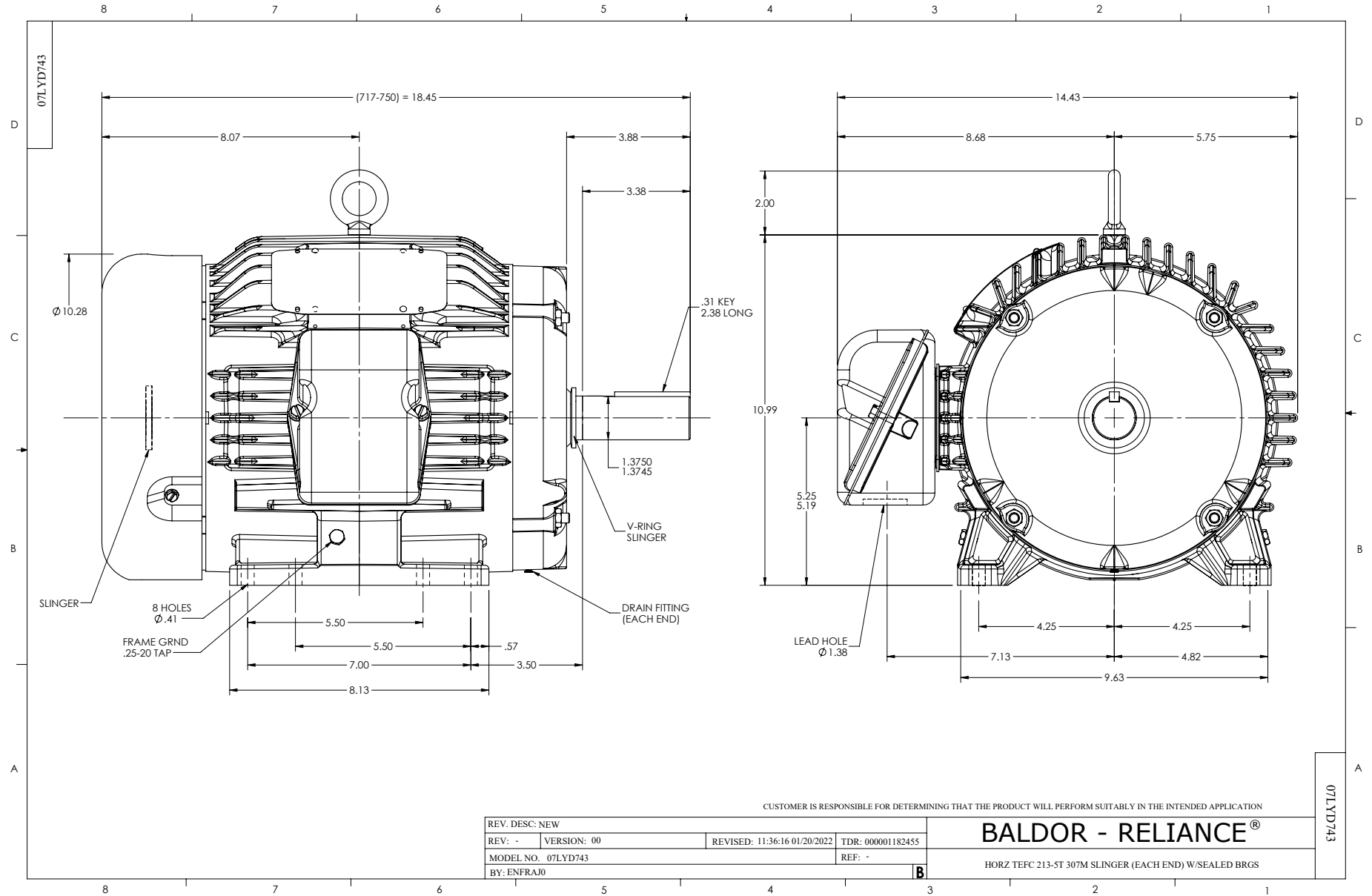
Typical performance - not guaranteed values.

10 HP 3 PH 60 HZ 1765 RPM 460 V 0748M

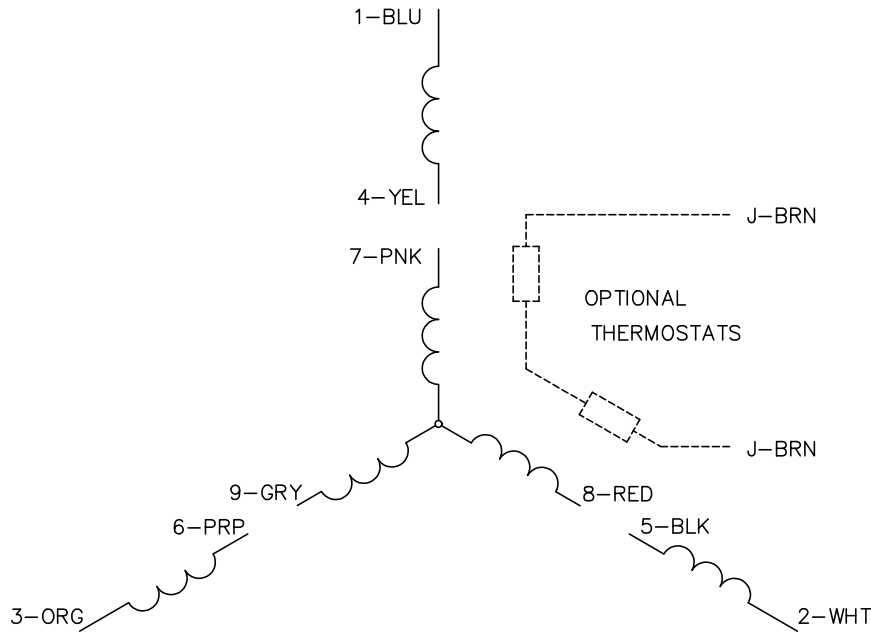
TORQUES (LB-FT): PO=84.1 PU=39.8 LR=50.9 LRA=85.9



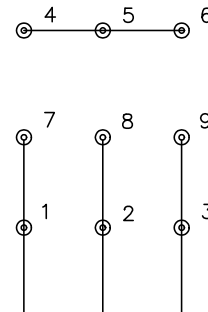
10/5/2024 ACPERF, record # 92021



CD0005

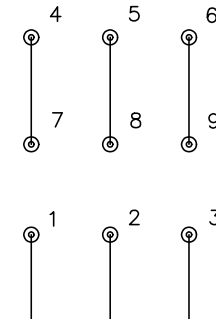


LOW VOLTAGE
(2Y)



LINE

HIGH VOLTAGE
(1Y)



LINE

NOTES:

1. INTERCHANGE ANY TWO LINE LEADS TO REVERSE ROTATION.
2. OPTIONAL THERMOSTATS ARE PROVIDED WHEN SPECIFIED.
3. ACTUAL NUMBER OF INTERNAL PARALLEL CIRCUITS MAY BE A MULTIPLE OF THOSE SHOWN ABOVE.
4. LEAD COLORS ARE OPTIONAL. LEADS MUST ALWAYS BE NUMBERED AS SHOWN.

CD0005

REV. DESC: REVISE TO SHOW OPTIONAL COLORS			
REV. LTR: E	BY: JLP	REVISED: 01/19/99 10:15	TDR: 0171435
S00000		FILE: AAA00005140	MDL: -
		MTL: -	

BALDOR ELECTRIC Co.

3PH, DV, 9 LEADS