

BALDOR • RELIANCE

Customer information packet

HBEM3768T

46M 6P TEFC HOR 215T

Class - None

Division - Not Applicable

Specifications

Enclosure	TEFC
Frame	215T
Frame Material	Iron
Frequency	60.00 Hz
Haz Area Class and Group	None
Haz Area Division	Not Applicable
Motor Letter Type	Three Phase
Output @ Frequency	5.000 HP @ 60 HZ
Phase	3
Synchronous Speed @ Frequency	1200 RPM @ 60 HZ
Voltage @ Frequency	460.0 V @ 60 HZ 230.0 V @ 60 HZ
Agency Approvals	CURUSEEV NEMA PREMIUM WEEE
Ambient Temperature	40 °C
Auxillary Box	No Auxillary Box
Auxillary Box Lead Termination	None
Base Indicator	Rigid
Bearing Grease Type	Polyrex EM (-20F +300F)
Blower	None
Current @ Voltage	15.300 A @ 208.0 V 7.400 A @ 460.0 V 14.800 A @ 230.0 V
Design Code	A
Drip Cover	No Drip Cover
Duty Rating	CONT
Efficiency @ 100% Load	89.5 %
Electrically Isolated Bearing	Electrically Isolated Bearings
Feedback Device	NO FEEDBACK
Front Shaft Indicator	None
Heater Indicator	No Heater

Part detail

Revision	F
Type	AC
Mech. spec.	07D743
Base	
Status	PRD/A
Elec. spec.	07WGY763
Layout	07LYD743
Eff. date	12-06-2024
CD Diagram	CD0005
Poles	06
Leads	9#14
Proprietary	False
Created date	01-05-2022

High Voltage Full Load Amps	7.4 a
Insulation Class	H
Inverter Code	Inverter Ready
KVA Code	K
Lifting Lugs	Standard Lifting Lugs
Locked Bearing Indicator	No Locked Bearing
Max Speed	1800 rpm
Motor Lead Quantity/Wire Size	9 @ 14 AWG
Motor Lead Termination	Flying Leads
Motor Standards	NEMA
Motor Type	0746M
Mounting Arrangement	F1
Number of Poles	6
Overall Length	18.45 IN
Power Factor	71
Product Family	General Purpose
Pulley End Bearing Type	Sealed Bearing
Pulley Face Code	Standard
Pulley Shaft Indicator	Standard
Rodent Screen	None
RoHS Status	ROHS COMPLIANT
Service Factor	1.15
Shaft Diameter	1.375 IN
Shaft Ground Indicator	No Shaft Grounding
Shaft Rotation	Reversible
Shaft Slinger Indicator	No Slinger
Speed	1160 rpm
Speed Code	Single Speed
Starting Method	Direct on line
Thermal Device - Bearing	None
Thermal Device - Winding	None
Vibration Sensor Indicator	No Vibration Sensor
Winding Thermal 1	None
Winding Thermal 2	None

Nameplate

NP4312A01A01L

CAT #	HBEM3768T		SER		CC	010A	WGT		LBS
SPEC	07D743Y763G1		RATING	40C AMB-CONT					
HZ	VOLTS		AMPS		RPM	HP	SF	NEMA NOM. EFF	
60	230/460		14.8/7.4		1160	5HP	1.15	89.5	
PH	3	CL	H	CODE	K	DES	A	ENCL	TEFC
								IP	54
								PF	71 %
DE BRG	6307		ODE BRG	6206		FRAME	215T		
INV TYPE:	VPWM	SL HZ	1.5	CHP	60	TO	90	1.5:1	
WK2	1.14	LB FT2	MAX RPM	1800	CT	6	TO	60	10:1
	7.4/3.7		VT	3	TO	60	20:1		
SFA 16.6/8.3									

YR

AC Induction Motor Performance Data

Record # 70547

Typical performance - not guaranteed values

Winding: 07WGY763-R009		Type: 0746M	Enclosure: TEFC	
Nameplate Data			460 V, 60 Hz: High Voltage Connection	
Rated Output (HP)	5	Full Load Torque	22.6 LB-FT	
Volts	230/460	Start Configuration	direct on line	
Full Load Amps	14.8/7.4	Breakdown Torque	80.9 LB-FT	
R.P.M.	1160	Pull-up Torque	51.4 LB-FT	
Hz	60 Phase	Locked-rotor Torque	56.4 LB-FT	
NEMA Design Code	A KVA Code	Starting Current	55.3 A	
Service Factor (S.F.)	1.15	No-load Current	4.04 A	
NEMA Nom. Eff.	89.5 Power Factor	Line-line Res. @ 25°C	1.64 Ω	
Rating - Duty	40C AMB-CONT	Temp. Rise @ Rated Load		
		Locked-rotor Power Factor	22.2	
		Rotor inertia	1.14 LB-FT ²	

Load Characteristics 460 V, 60 Hz, 5 HP

% of Rated Load	25	50	75	100	125	150	S.F.
Power Factor	34	51	63	70	73	75	72
Efficiency	81.5	89.5	90	89.7	88.7	87.7	89.1
Speed	1193	1187	1179	1171	1163	1153	1166
Line amperes	4.42	5.17	6.31	7.56	9.04	10.6	8.45

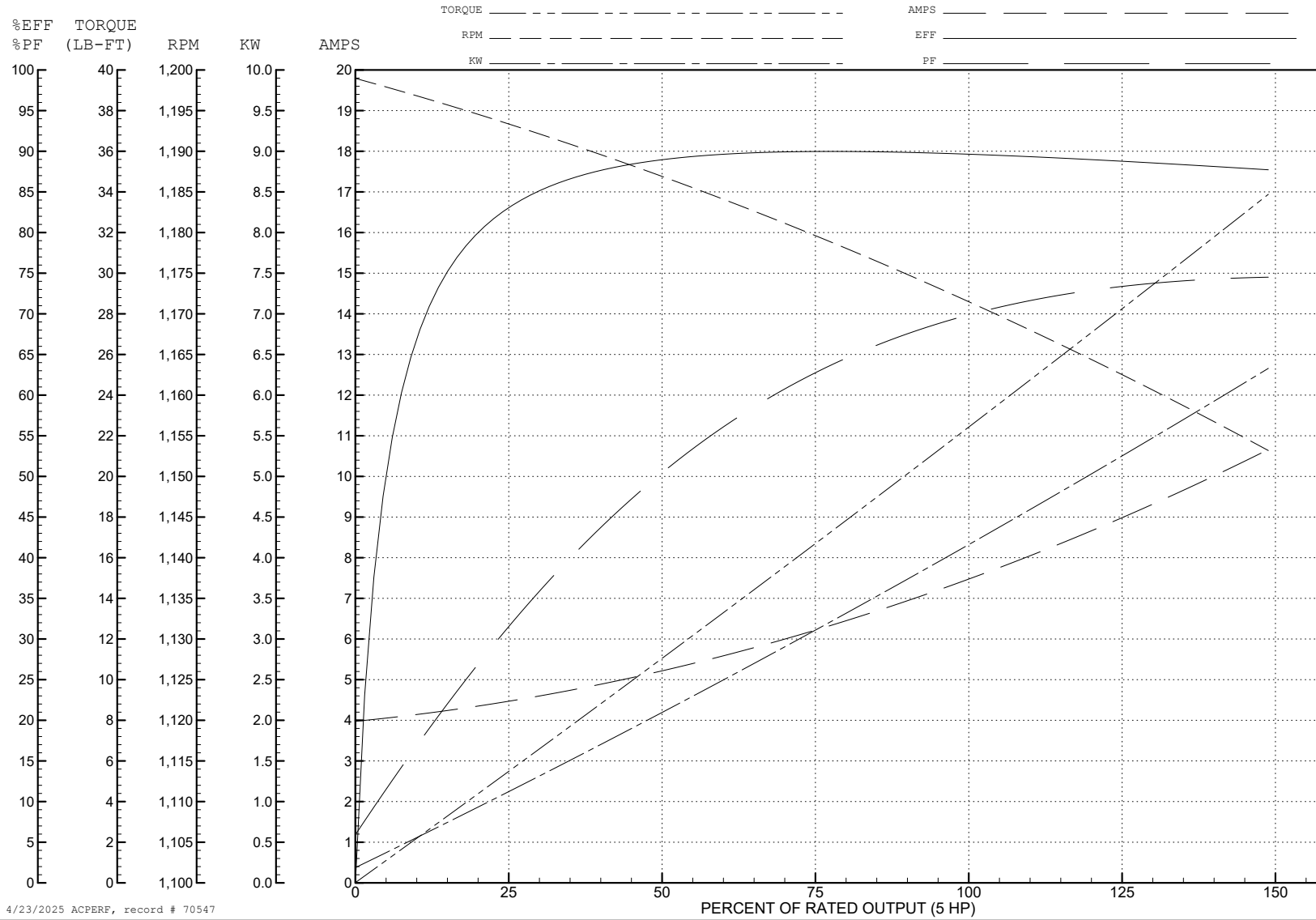
ABB Motors and Mechanical Inc.

WINDING # 07WGY763

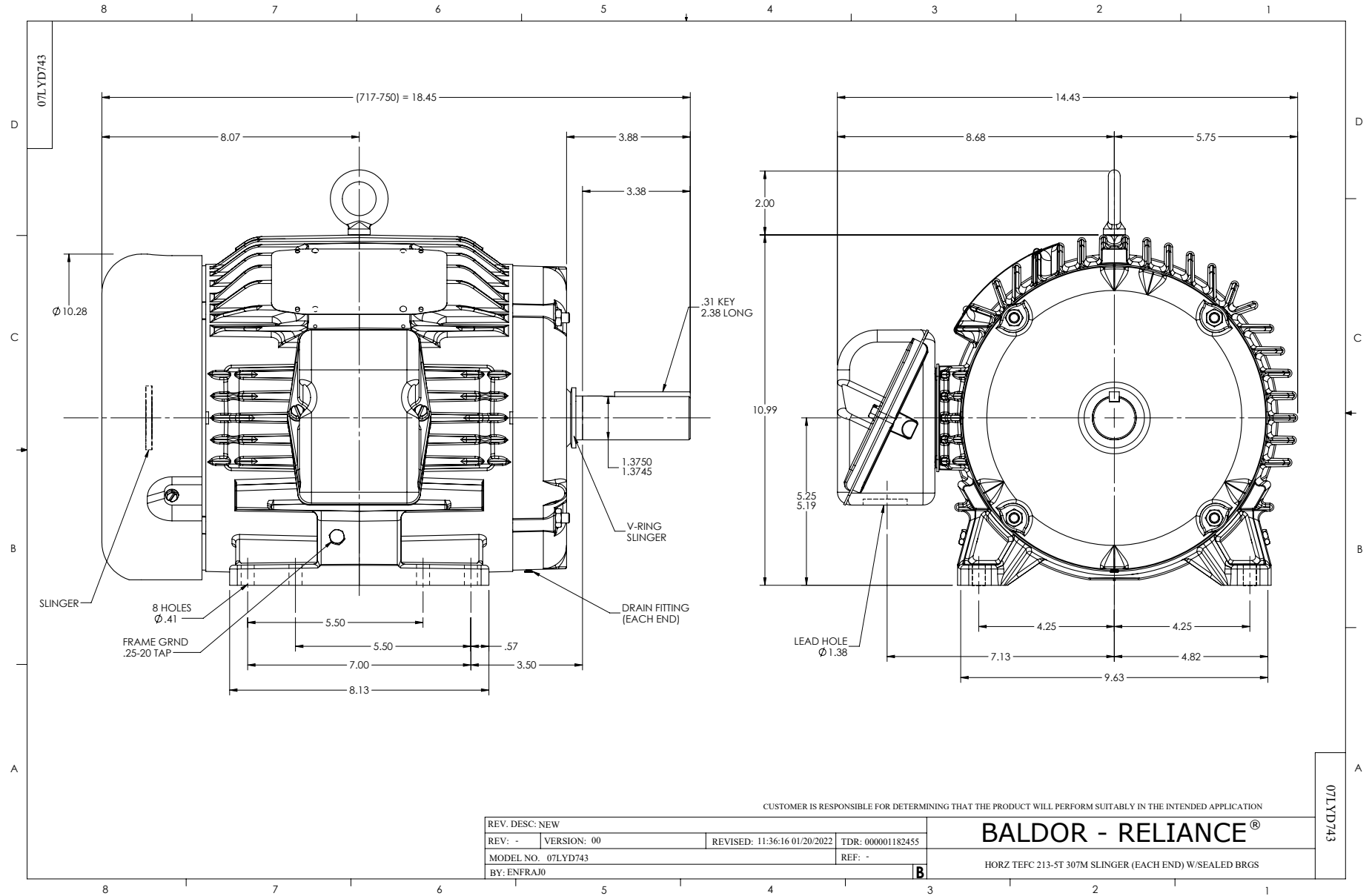
5 HP 3 PH 60 HZ 1160 RPM 460 V 0746M

Typical performance - not guaranteed values.

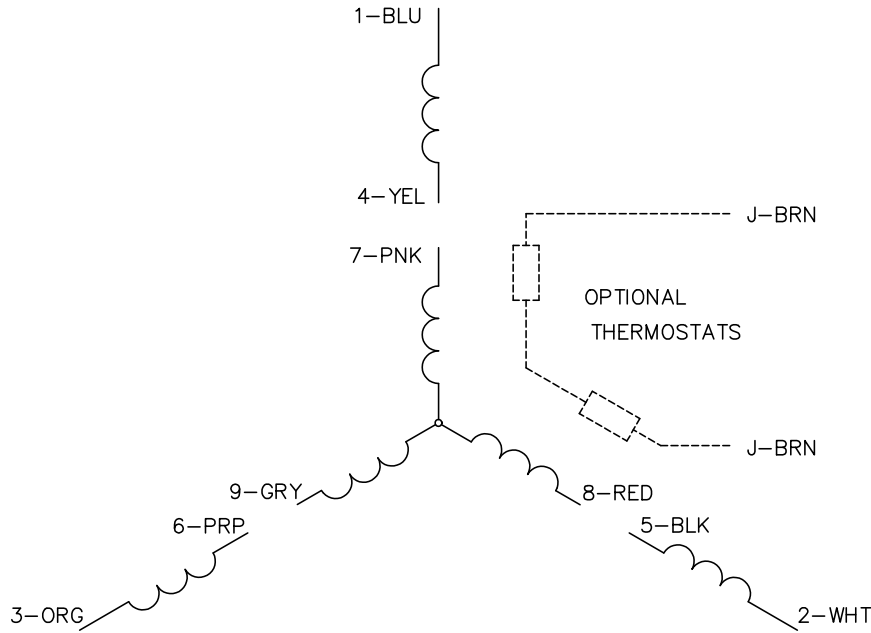
TORQUES (LB-FT): PO=80.9 PU=51.4 LR=56.4 LRA=55.3



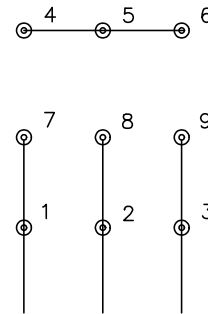
4/23/2025 ACPERF, record # 70547



CD0005

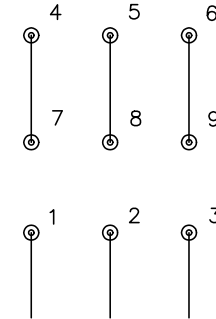


LOW VOLTAGE
(2Y)



LINE

HIGH VOLTAGE
(1Y)



LINE

NOTES:

1. INTERCHANGE ANY TWO LINE LEADS TO REVERSE ROTATION.
2. OPTIONAL THERMOSTATS ARE PROVIDED WHEN SPECIFIED.
3. ACTUAL NUMBER OF INTERNAL PARALLEL CIRCUITS MAY BE A MULTIPLE OF THOSE SHOWN ABOVE.
4. LEAD COLORS ARE OPTIONAL. LEADS MUST ALWAYS BE NUMBERED AS SHOWN.

CD0005

REV. DESC: REVISE TO SHOW OPTIONAL COLORS			
REV. LTR: E	BY: JLP	REVISED: 01/19/99 10:15	TDR: 0171435
S00000		FILE: AAA00005140	MDL: -
		MTL: -	

BALDOR ELECTRIC Co.

3PH, DV, 9 LEADS