

BALDOR • RELIANCE

Customer information packet

HBEM3714T

52M 4P TEFC HOR 215T

Class - None

Division - Not Applicable

Specifications

Enclosure	TEFC
Frame	215T
Frame Material	Steel
Frequency	60.00 Hz
Haz Area Class and Group	None
Haz Area Division	Not Applicable
Motor Letter Type	Three Phase
Output @ Frequency	10.000 HP @ 60 HZ
Phase	3
Synchronous Speed @ Frequency	1800 RPM @ 60 HZ
Voltage @ Frequency	460.0 V @ 60 HZ 230.0 V @ 60 HZ
Agency Approvals	CURUSEEV NEMA PREMIUM WEEE
Ambient Temperature	40 °C
Auxillary Box	No Auxillary Box
Auxillary Box Lead Termination	None
Base Indicator	Rigid
Bearing Grease Type	Polyrex EM (-20F +300F)
Blower	None
Current @ Voltage	25.000 A @ 230.0 V 27.000 A @ 208.0 V 12.500 A @ 460.0 V
Design Code	A
Drip Cover	No Drip Cover
Duty Rating	CONT
Efficiency @ 100% Load	91.7 %
Electrically Isolated Bearing	Electrically Isolated Bearings
Feedback Device	NO FEEDBACK
Front Shaft Indicator	None
Heater Indicator	No Heater

Part detail

Revision	D
Type	AC
Mech. spec.	37T556
Base	
Status	PRD/A
Elec. spec.	37WGL865
Layout	37LYT556
Eff. date	06-14-2024
CD Diagram	CD0005
Poles	04
Leads	9#14
Proprietary	False
Created date	01-05-2022

High Voltage Full Load Amps	12.5 a
Insulation Class	H
Inverter Code	Inverter Ready
KVA Code	K
Lifting Lugs	Standard Lifting Lugs
Locked Bearing Indicator	No Locked Bearing
Max Speed	2700 rpm
Motor Lead Quantity/Wire Size	9 @ 14 AWG
Motor Lead Termination	Flying Leads
Motor Standards	NEMA
Motor Type	3752M
Mounting Arrangement	F1
Number of Poles	4
Overall Length	20.52 IN
Power Factor	85
Product Family	General Purpose
Pulley End Bearing Type	Sealed Bearing
Pulley Face Code	Standard
Pulley Shaft Indicator	Standard
Rodent Screen	None
RoHS Status	ROHS COMPLIANT
Service Factor	1.15
Shaft Diameter	1.375 IN
Shaft Ground Indicator	No Shaft Grounding
Shaft Rotation	Reversible
Shaft Slinger Indicator	No Slinger
Speed	1770 rpm
Speed Code	Single Speed
Starting Method	Direct on line
Thermal Device - Bearing	None
Thermal Device - Winding	None
Vibration Sensor Indicator	No Vibration Sensor
Winding Thermal 1	None
Winding Thermal 2	None

Nameplate

NP4246A01A01									
CAT #	HBEM3714T			WGT	231	LBS			
SPEC	37T556L865G1			ENCL	TEFC				
SER #				CC	010A	IP	54		
HP	10	MAG CUR	10.6/5.3						
VOLTS	230/460			NEMA NOM. EFF	91.7				
AMPS	25/12.5			PF	85				
RATING	40C AMB-CONT								
RPM	1770			MAX RPM	2700				
FRAME	215T	HZ	60	CODE	K	CLASS	H		
SER.F.	1.15	SF AMP	28.4/14.2		PH	3	DES	A	
DE	6307		ODE	6206					
LUBRICATION	POLYREX EM								
ID LOGO	INV TYPE:	VPWM	CHP	60	TO	90	1.5:1		
ID LOGO	WK2	1.28	CT	6	TO	60	10:1		
ID LOGO	SL HZ	1	VT	3	TO	60	20:1		
				ID.ABB/BALDOR/					
YR									

AC Induction Motor Performance Data

Record # 86460

Preliminary Data Sheet

Winding: 37WGL865-R002		Type: 3752M	Enclosure: TEFC
Nameplate Data		460 V, 60 Hz: High Voltage Connection	
Rated Output (HP)	10	Full Load Torque	29.7 LB-FT
Volts	230/460	Start Configuration	direct on line
Full Load Amps	25.0/12.5	Breakdown Torque	102 LB-FT
R.P.M.	1770	Pull-up Torque	46.9 LB-FT
Hz	60 Phase	Locked-rotor Torque	62.2 LB-FT
NEMA Design Code	A KVA Code	Starting Current	101 A
Service Factor (S.F.)	1.15	No-load Current	5.33 A
NEMA Nom. Eff.	91.7 Power Factor	Line-line Res. @ 25°C	0.982 Ω
Rating - Duty	40C AMB-CONT	Temp. Rise @ Rated Load	69°C
S.F. Amps	28.2/14.6	Temp. Rise @ S.F. Load	92°C
		Locked-rotor Power Factor	42
		Rotor inertia	1.28 lb-ft ²

Load Characteristics 460 V, 60 Hz, 10 HP

% of Rated Load	25	50	75	100	125	150	S.F.
Power Factor	44	66	77	82	84	85	84
Efficiency	88.7	92.3	92.7	92.2	91.3	90	91.4
Speed	1793	1786	1778	1770	1761	1751	1762
Line amperes	6.05	7.73	9.9	12.5	15.3	18.3	14.1

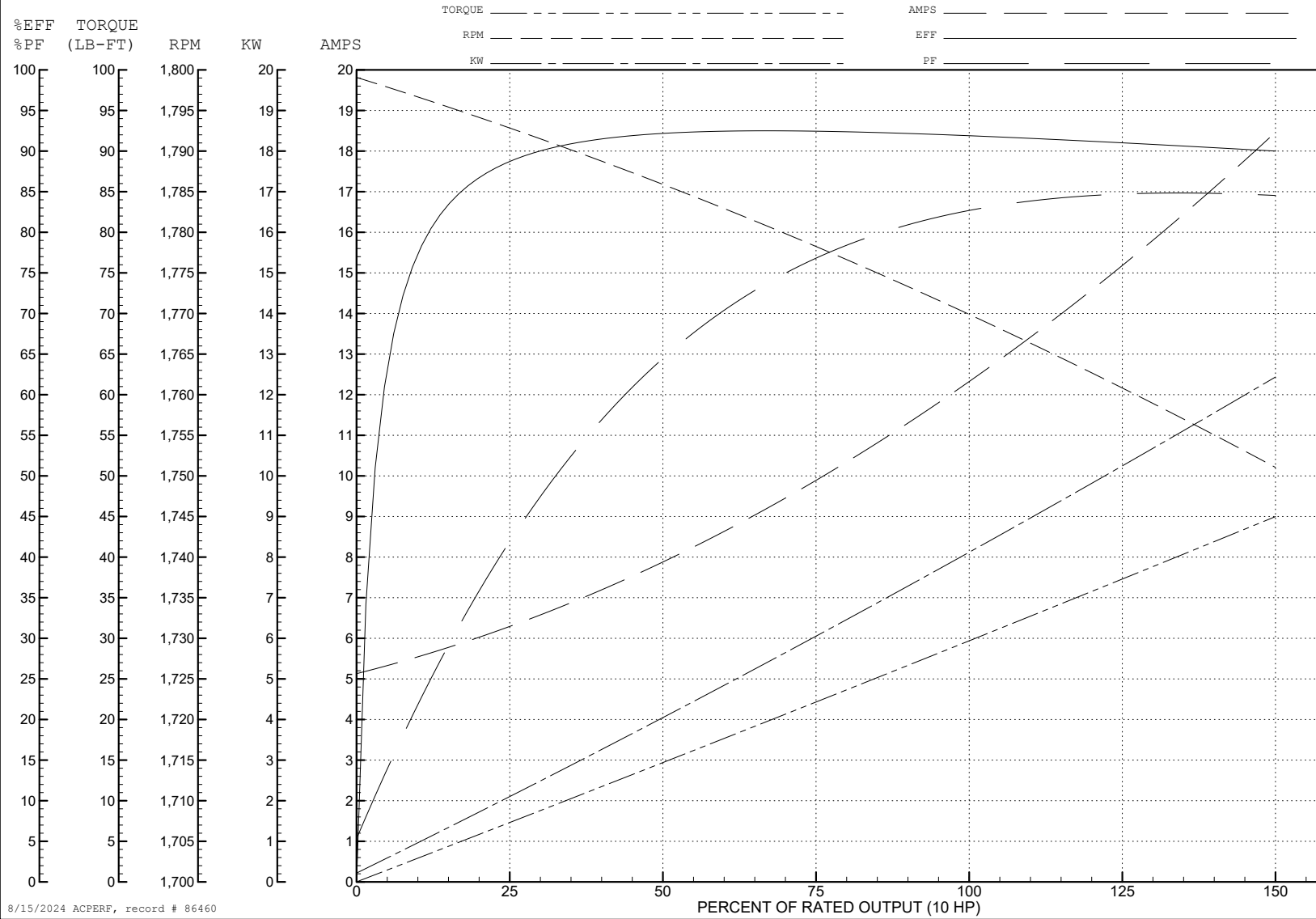
ABB Motors and Mechanical Inc.

WINDING # 37WGL865

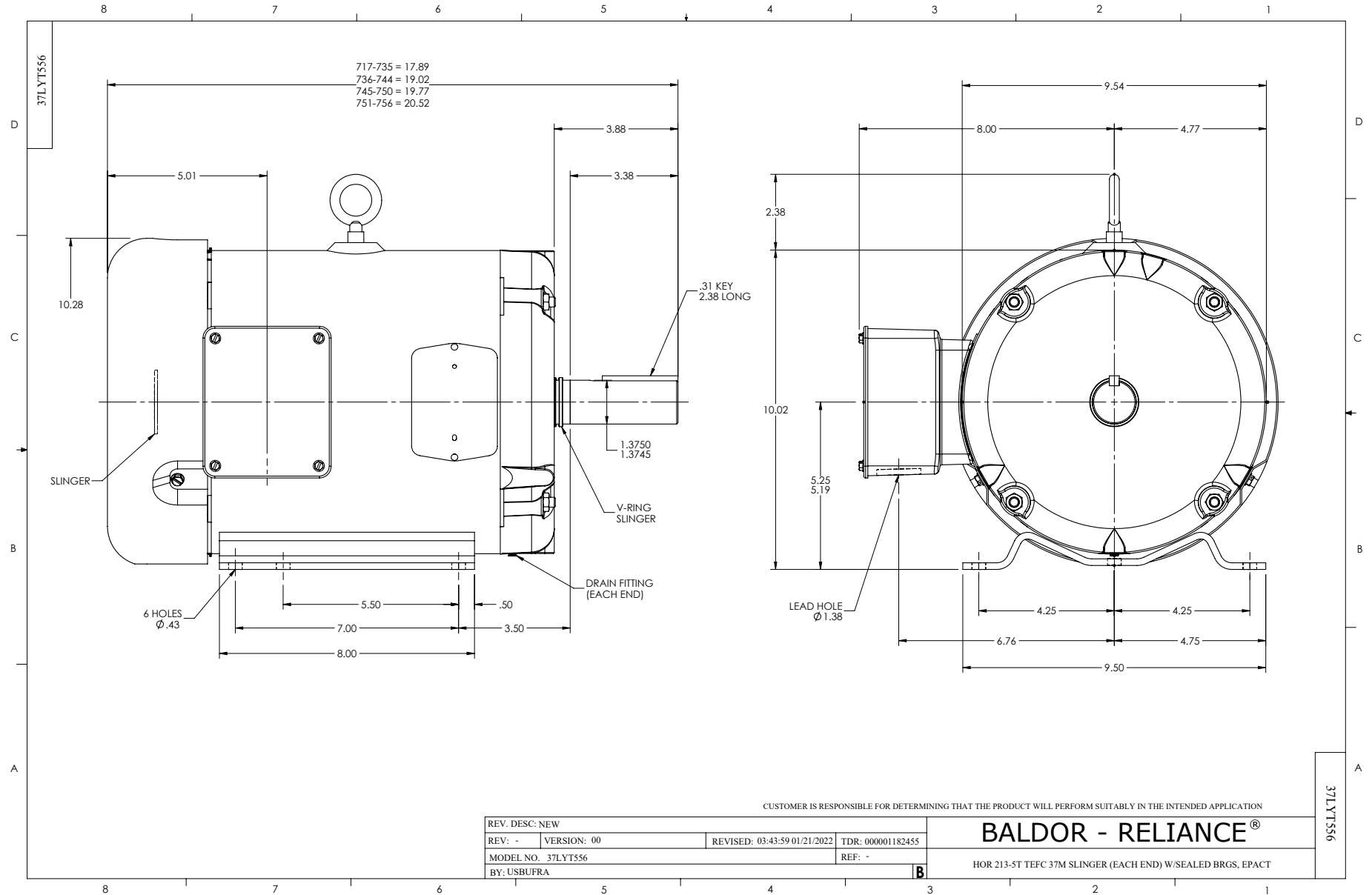
Typical performance - not guaranteed values.

10 HP 3 PH 60 HZ 1770 RPM 460 V 3752M

TORQUES (LB-FT): PO=102 PU=46.9 LR=62.2 LRA=101



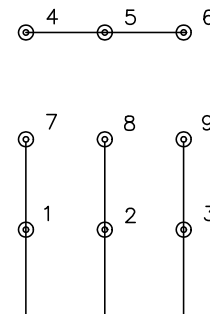
8/15/2024 ACPERF, record # 86460



CD0005



LOW VOLTAGE
(2Y)



LINE

HIGH VOLTAGE
(1Y)



LINE

NOTES:

1. INTERCHANGE ANY TWO LINE LEADS TO REVERSE ROTATION.
2. OPTIONAL THERMOSTATS ARE PROVIDED WHEN SPECIFIED.
3. ACTUAL NUMBER OF INTERNAL PARALLEL CIRCUITS MAY BE A MULTIPLE OF THOSE SHOWN ABOVE.
4. LEAD COLORS ARE OPTIONAL. LEADS MUST ALWAYS BE NUMBERED AS SHOWN.

CD0005

REV. DESC: REVISE TO SHOW OPTIONAL COLORS			
REV. LTR: E	BY: JLP	REVISED: 01/19/99 10:15	TDR: 0171435
S00000		FILE: AAA00005140	MDL: -
		MTL: -	

BALDOR ELECTRIC Co.

3PH, DV, 9 LEADS